



661-699 Winnetka Avenue N | Golden Valley, MN 55427

Office/Retail Space For Lease

Golden Valley Town Square is conveniently located off Highway 55 and Winnetka Avenue in the heart of Golden Valley and is surrounded by professional offices, residential apartments, and single-family homes. This attractive center is minutes away from Downtown Minneapolis. Join co-tenants Block Advisors, Snap Fitness, Davanni's, Mainstream Boutique, Golden Valley Animal Hospital, Bergstrom Studio, Triple D Espresso, WA Champion & Co, Pups & Stuff, 3 Click Mobile Fitness, Custom Trim Barbers, New Asian Ju Yuan, Fix My Busted Computer, **and new tenant Lash Lounge!**

Highlights and Features:

- Prominent corner with great visibility
- Easy access to Hwy 55, Hwy 169 and I-394
- On the bus line
- Outdoor patio/indoor common area seating
- Elevator
- Building signage
- Ample parking
- Area tenants: McDonald's, UPS Store, O'Reilly Auto Parts, Mathnasium, Kuipers Ace Hardware, Chipotle, Love Pizza, Doolittle's, Patina, New Bohemia, Pancheros Mexican Grill, D'Amico & Sons, and Golden Valley Country Club

Space Available:

- Suite 677B: 600 sf (office space)
- Suite: 681A: 2,447 sf (turnkey salon with office space, treatment room, private staircase and elevator)
- Suite 681B: 1,097 sf
- Suites 677B, 681A, and 681B are contiguous to 4,144 sf
- 2024 CAM: \$11.64 psf and Tax: \$4.30 psf
- Lease Rate: Negotiable

Demographics and Traffic Counts:

- Average Household Population: 1 mile - 2,802, 3 miles - 38,711, and 5 miles - 130,441
- Average Household Income: 1 mile - \$87,528, 3 miles - \$84,516, and 5 miles - \$77,048
- Traffic Counts: Hwy 55 - 32,499 vpd, Winnetka Avenue N - 9,235 vpd, and Golden Valley Rd - 3,897 vpd



Christianson & Company
COMMERCIAL REAL ESTATE SERVICES
www.SpaceAvailableMN.com

CORFAC
INTERNATIONAL

MARY LINDELL

612.747.9854

mary@christiansonandco.com

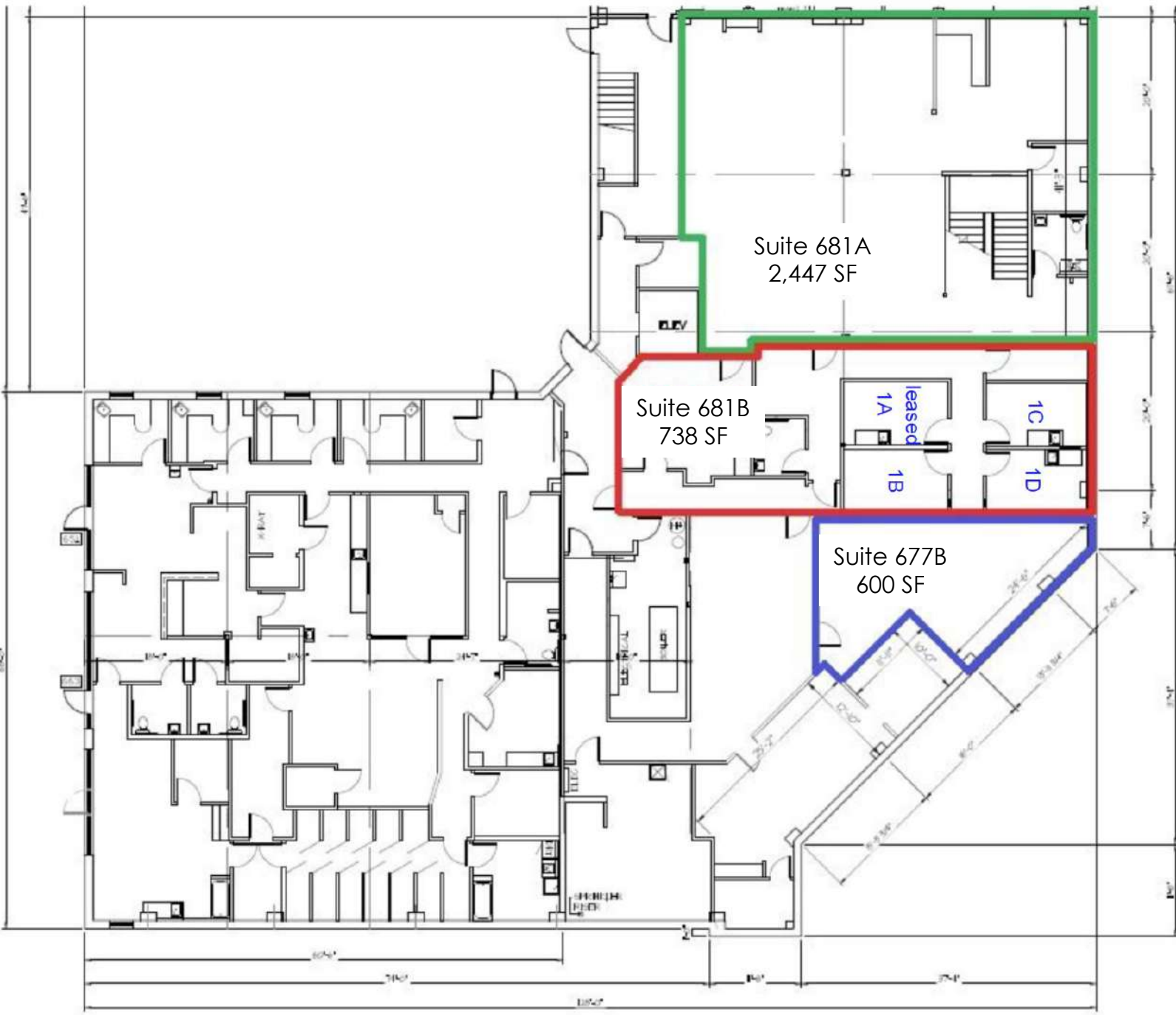
This information is accurate as of the date of printing and is subject to change without notice. All information is deemed accurate, but cannot be guaranteed.

www.SpaceAvailableMN.com

info@SpaceAvailableMN.com | 952.921.5844

Floor Plan

Suite 677B-LL, Suite 681A-LL and Suite 681B-LL
Contiguous to 3,785 SF

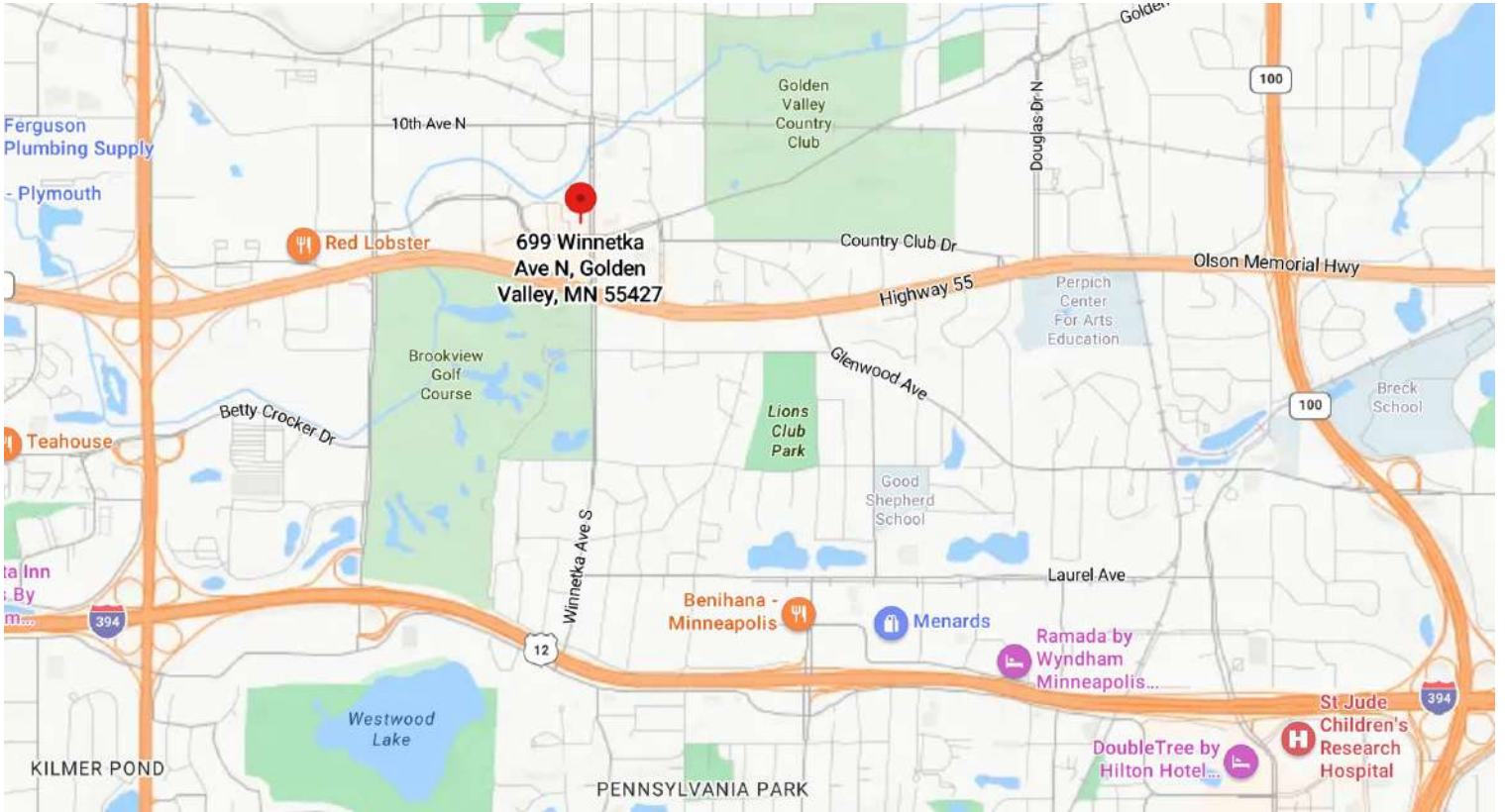


Interior Photos



This information is accurate as of the date of printing and is subject to change without notice. All information is deemed accurate, but cannot be guaranteed.

Map



Aerial



This information is accurate as of the date of printing and is subject to change without notice. All information is deemed accurate, but cannot be guaranteed.