

3,052 RSF AVAILABLE FOR LEASE

THE PLAZA CONDO | ORLANDO, FL

# THE PLAZA CONDO

**LOCATED IN THE HEART OF DOWNTOWN**

SUITE 1100S

3,052 RSF AVAILABLE FOR LEASE







### CLASS-A DEVELOPMENT

The Plaza Condo is located in the heart of Orlando's Central Business District. There are plenty of restaurants within walking distance as well as access to businesses located in Downtown Orlando.

SUITE	RSF
1100S	3,052

### PROPERTY FEATURES

- Fully furnished Balcony Unit overlooking Orange Ave in The Plaza South Tower
- Break Room
- Turn-Key office ready for immediate occupancy
- On-site retail, restaurants, and 12 cinema theater
- 24/7 HVAC & Security

FOR MORE INFORMATION:

**ROGER SODERSTROM JR** | 407.617.2830 | [ROGER@STLRINGINT.COM](mailto:ROGER@STLRINGINT.COM)  
Managing Broker

**STIRLING** | **INTERNATIONAL**  
REAL ESTATE



FOR MORE INFORMATION:  
**ROGER SODERSTROM JR** | 407.617.2830 | [ROGER@STLRINGINT.COM](mailto:ROGER@STLRINGINT.COM)  
Managing Broker

**STIRLING** | **INTERNATIONAL**  
REAL ESTATE



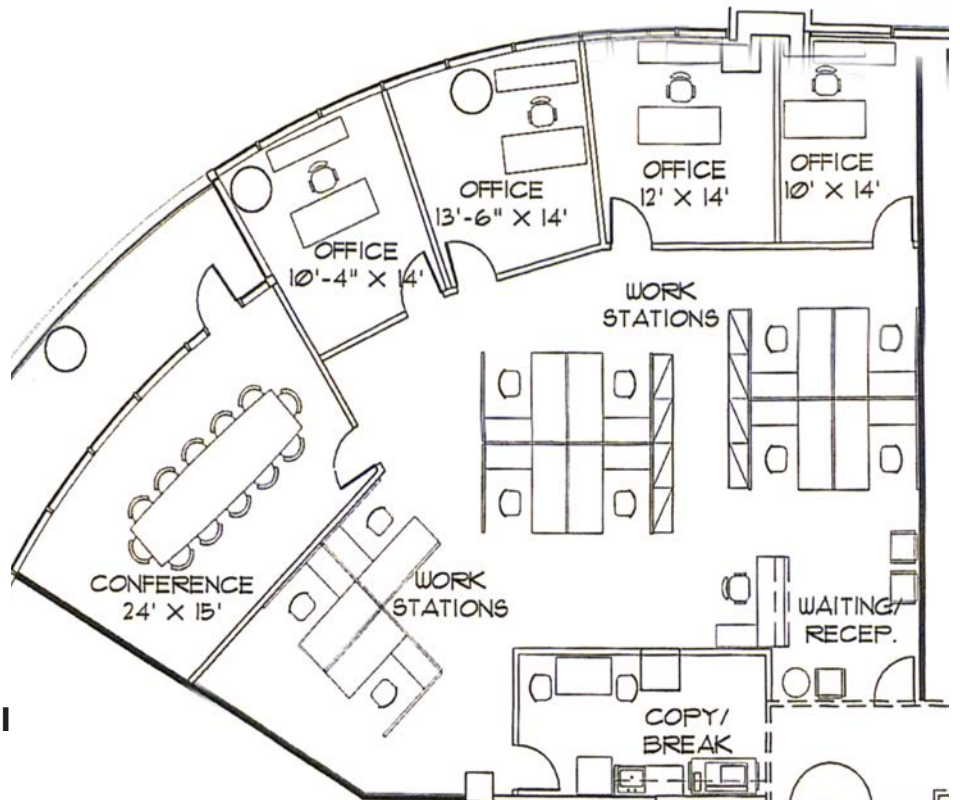






## FLOOR PLAN 1100 SOUTH

- Fully furnished Balcony Unit
- Located in The Plaza South Tower
- Overlooking Orange Ave
- Conveniently located off the elevators
- Includes four private offices
- Features an open workspace
- Equipped with a large conference room
- Includes a break room/copy room
- Ready for immediate occupancy
- Turn-Key office solution



**Rate : \$29 full service less janitorial**



*"The Orlando region is No. 1 in the nation for job growth for the fourth consecutive year. According to the Bureau of Labor Statistics, the Orlando-Kissimmee-Sanford metropolitan statistical area (MSA) continued its trajectory as the fastest growing job market in the country for 2018."*



Sunrail, Church Station



Amway Center



Dr. Phillips Performing Arts Center



Orlando Soccer Stadium



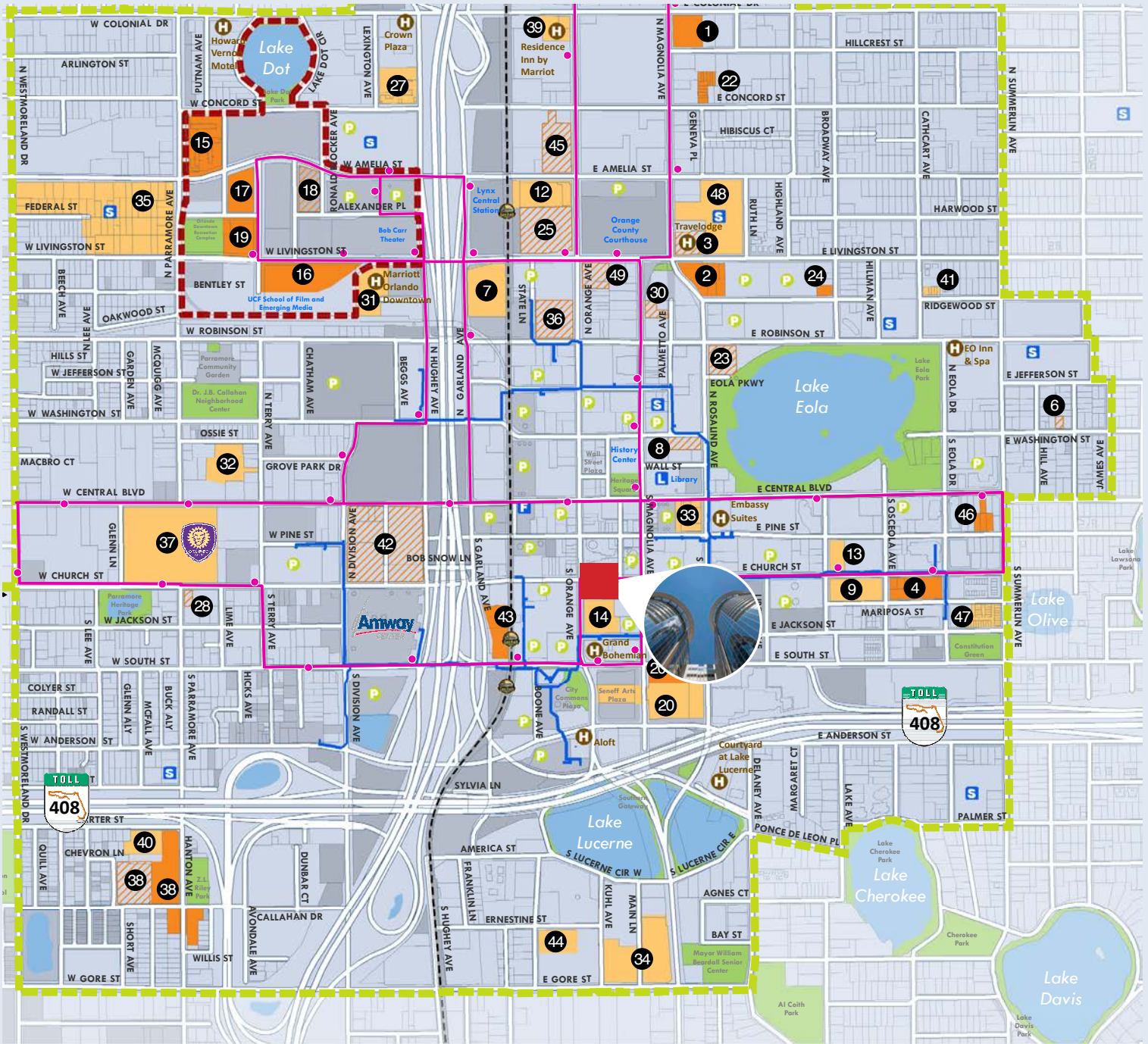
Lake Eola, Downtown Orlando

Downtown Orlando, FL





# Planned and Recently Completed Projects



- |                           |  |  |  |
|---------------------------|--|--|--|
| 1. 107 Hillcrest          | 13. Citi Tower                                       | 20. Citrus Center                                    | Improvements   |
| 2. 333 North Rosalind     | 14. Citrus Center                                    | Improvements   | 27. Creative Village - Amelia Court                  |
| 3. 409 North Magnolia     | Improvements   | 21. Creative Village - Amelia Court                  | 28. Creative Village - Dr. Phillips Academic Commons |
| 4. 520 East               | 15. Creative Village - Amelia Court                  | 22. Creative Village - Dr. Phillips Academic Commons | 29. Creative Village - Parcel M Apartments           |
| 5. 800 North Orange       | 16. Creative Village - Dr. Phillips Academic Commons | 23. Creative Village - Parcel M Apartments           | 30. Creative Village - Parcel U Apartments           |
| 6. 811 East Washington    | 17. Creative Village - Parcel M Apartments           | 24. Creative Village - Parcel U Apartments           |  |
| 7. Ace Café               | 18. Creative Village - Parcel U Apartments           | 25. Citi Tower                                       |  |
| 8. Cambria Suites Hotel   | 19. Citi Tower                                       | 26. Citrus Center                                    |  |
| 9. Camden Thornton Park   |  |  |  |
| 10. Camping World Stadium |  |  |  |
| 11. Camden North Quarter  |  |  |  |
| 12. Central Station       |  |  |  |

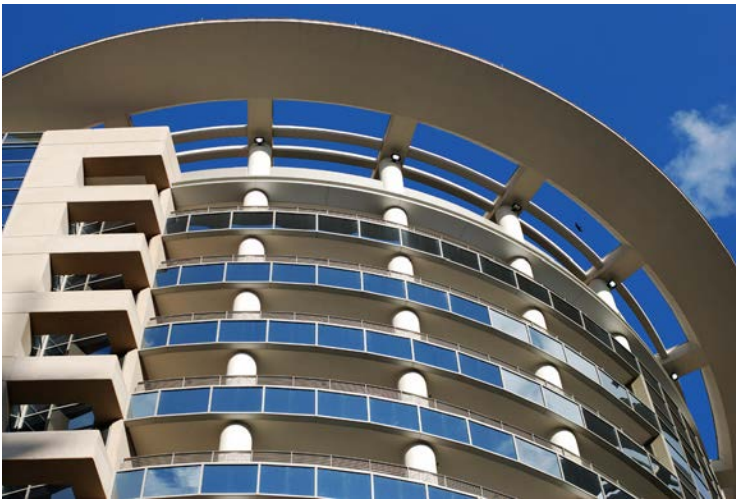




THE  
PLAZA



Lake Eola, Downtown Orlando



**Roger Soderstrom Jr.**

Managing Broker

407.617.2830

[roger@stirlingint.com](mailto:roger@stirlingint.com)