

1,738±SQFT

CORAL SPRINGS CORPORATE PARK



12296 WILES RD, CORAL SPRINGS, FL 33076



- Nice & Clean
- 100% AC
- Roll up Garage Door with electric motor
- 2 Bathrooms
- Large Office Work Area
- Southeast Florida, Northwest Fort Lauderdale, Northwest Broward County, Sawgrass Expy to Coral Ridge, South to Wiles Road



PRICE NEGOTIABLE



JOE PELAYO, CCIM, SIOR, C2EX
BROKER
trec@joepelayo.com
954.224.8773

TREC
Total Real Estate
Consultants Inc.
www.trecfl.com
954.341.3294

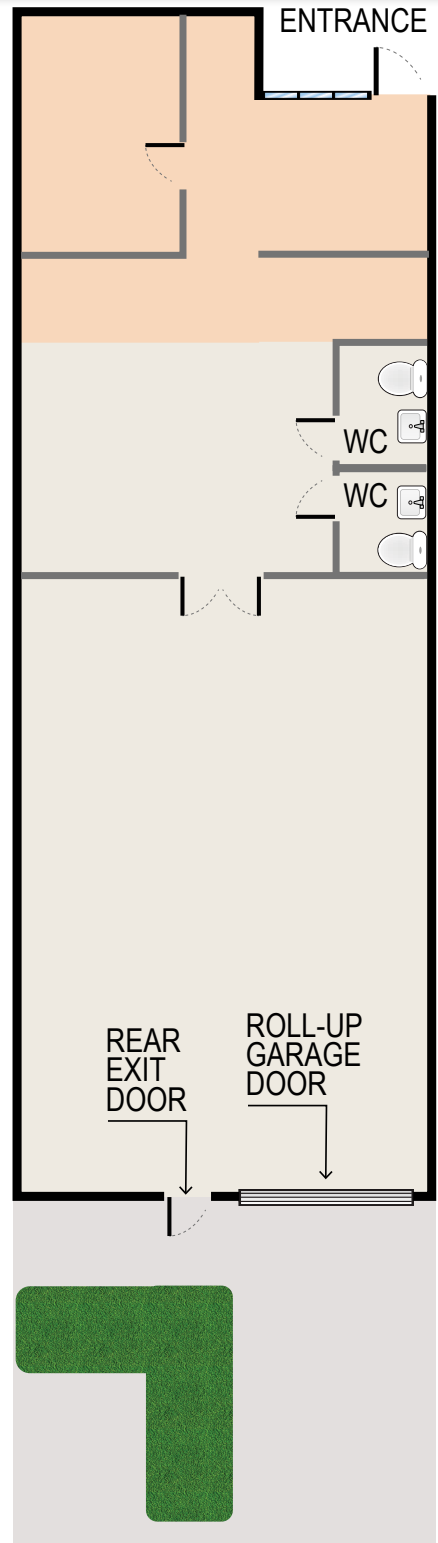
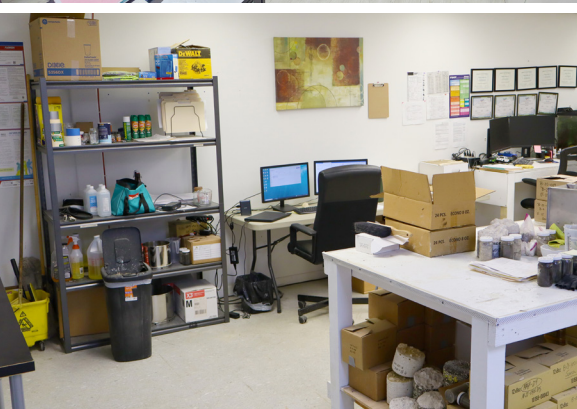
GEORGE PELAYO, RENE, MRP
BROKER ASSOCIATE
george@trecfl.com
954.482.1330



NOTICE: This information has been obtained from sources believed to be reliable but has not been verified. No warranty or representation, express or implied, is made as to the condition/legal adjustments of the property (or properties) referenced or as to the accuracy or completeness of the information contained, and same is submitted subject to errors, omissions, change of price, retail or other conditions, including but not limited to withdrawal without notice, and to any special listing conditions imposed by the property owner.

12296 WILES RD, CORAL SPRINGS, FL 33076

FLOOR PLAN



JOE PELAYO, CCIM, SIOR, C2EX
BROKER
trec@joepelayo.com
954.224.8773

TREC
Total Real Estate
Consultants Inc.
www.trecfl.com
954.341.3294

GEORGE PELAYO, RENE, MRP
BROKER ASSOCIATE
george@trecfl.com
954.482.1330



NOTICE: This information has been obtained from sources believed to be reliable but has not been verified. No warranty or representation, express or implied, is made as to the condition/legal adjustments of the property (or properties) referenced or as to the accuracy or completeness of the information contained, and same is submitted subject to errors, omissions, change of price, retail or other conditions, including but not limited to withdrawal without notice, and to any special listing conditions imposed by the property owner.