



ATLANTIC TESTING LABORATORIES, INC.

Testing, Soils and Foundation Engineers

POST OFFICE BOX 360816
MELBOURNE, FLORIDA 32936-0816
(321) 259-4141
FAX: 259-4838
E-MAIL: atlantictesting@cfl.rr.com

February 28th, 2005
05-5063-A-1

Brett Steinwand
14410 US Highway 1
Sebastian, Florida 32958
(772) 589-81111
(772) 589-7561 Fax

Reference: Proposed 3770 US Highway 1
Grant, Florida

Pursuant to your request, **ATLANTIC TESTING LABORATORIES, INC.** is pleased to submit the following Subsurface Investigation on the above referenced project, for your use and information.

Our task was to perform Standard Penetration Tests and Hand Auger Borings on the above referenced project.

The data reflecting the classification of the soils, in accordance with the Unified Soils Classification System, is indicated on the attached boring profiles.

We are available at your convenience to answer any questions you may have concerning this report.

Sincerely,

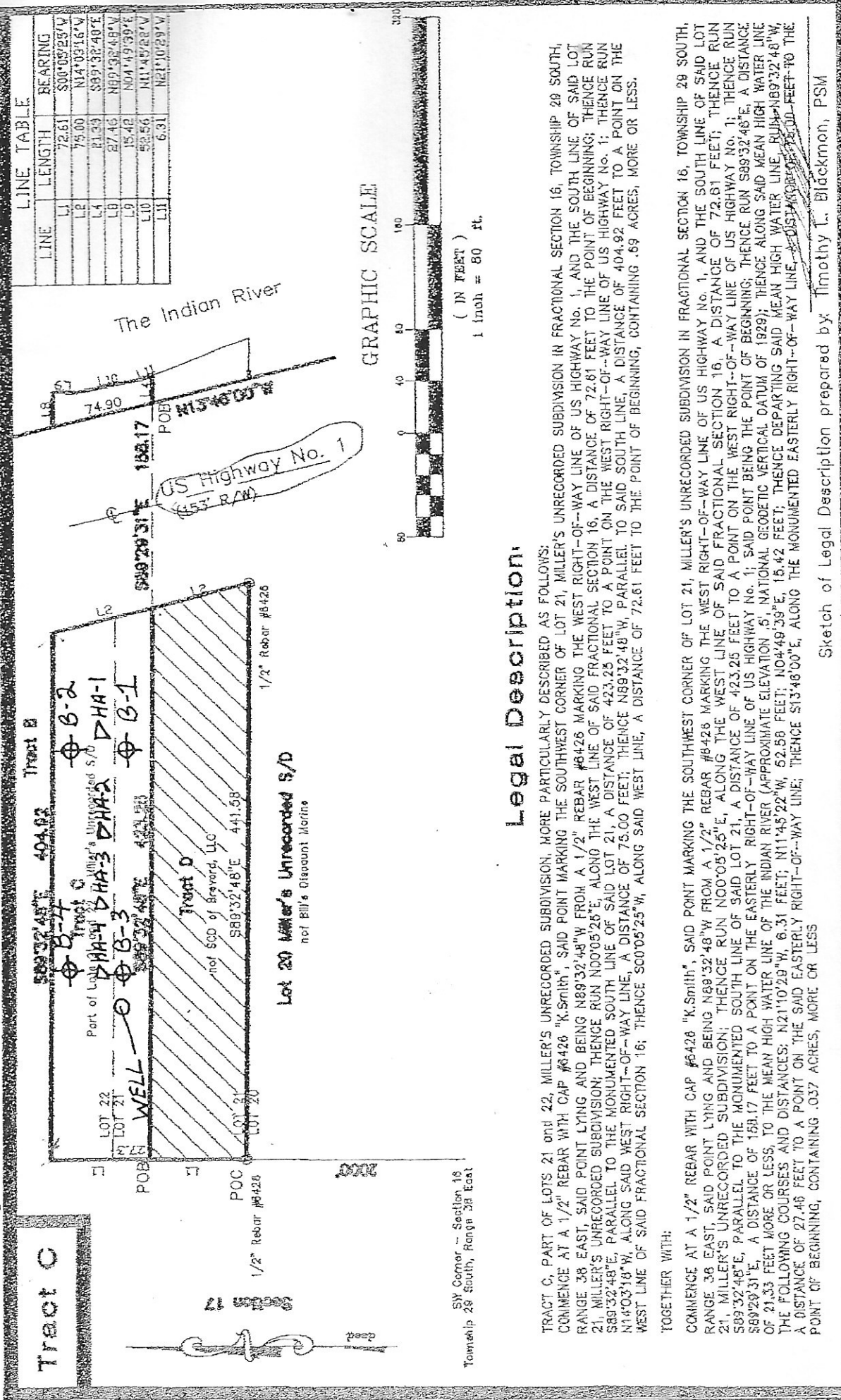
ATLANTIC TESTING LABORATORIES, INC.

R. Wayne Meyer

R. Wayne Meyer
President

- ⊕ DENOTES: Approximate locations of standard penetration tests.
- △ DENOTES: Approximate locations of hand auger borings.

Site Map for Brett Steinwand on project: 3770 US Hwy 1, Grant, Florida



Sketch of Legal Description prepared by: Timothy L. Blackmon, PSM

Brett Steinwand
Proposed 3770 US Highway 1
Grant, Florida
05-5063-A-1

SOIL PROFILES

Profile no. Depth Soil Description

Location AB: See Site Map

HA-1 0.0' - 1.0' Light Grayish Brown SAND trace of Silt & Organics (SP)
 1.0' - 2.0' Light Gray Brownish SAND trace of Silt & Organics (SP)
 2.0' - 4.5' Dark Gray SAND trace of Silt & Organics (SP)
 4.5' - 6.0' Dark Brown SAND little Silt, Clay & Organics (SP-SM)

Ground Water Table (GWT) encountered at 32" inches below ground surface.

HA-2 0.0' - 2.5' Gray SAND trace of Silt & Organics (SP)
 2.5' - 4.5' Light Gray SAND trace of Silt & Organics (SP)
 4.5' - 6.0' Dark Brown SAND trace of Silt & Clay (SP)

Ground Water Table (GWT) encountered at 27" inches below ground surface.

HA-3 0.0' - 1.0' Light Gray SAND trace of Silt , Clay & Organics (SP)
 1.0' - 2.0' Gray Brown SAND trace of Silt , Wood , Metal Fragments
 & Clay (SP)
 2.0' - 3.5' Gray SAND trace of Silt & Clay (SP)
 3.5' - 4.5' Dark Gray SAND trace of Silt & Clay (SP)
 4.5' - 6.0' Dark Brown SAND trace of Silt & Clay (SP)

Ground Water Table (GWT) encountered at 23" inches below ground surface.

HA-4 0.0' - 0.5' Light Gray SAND trace of Silt & Organics (SP)
 0.5' - 3.5' Gray Brownish SAND trace of Silt (SP)
 3.5' - 4.5' Black Dark Gray SAND Mix trace of Silt, Organics
 & Clay (SP)
 4.5' - 5.5' Dark Brown Black SAND little Silt, & Clay (SP-SM)
 5.5' - 6.0' Yellow Brown SAND trace of Silt & Clay (SP)

Ground Water Table (GWT) encountered at 24" inches below ground surface.

Respectfully Submitted,



Donald M. Tucker, Jr. P.E. # 15868
Vice President
02/28/05