



Available Move-In May 1st

 For Lease Rates

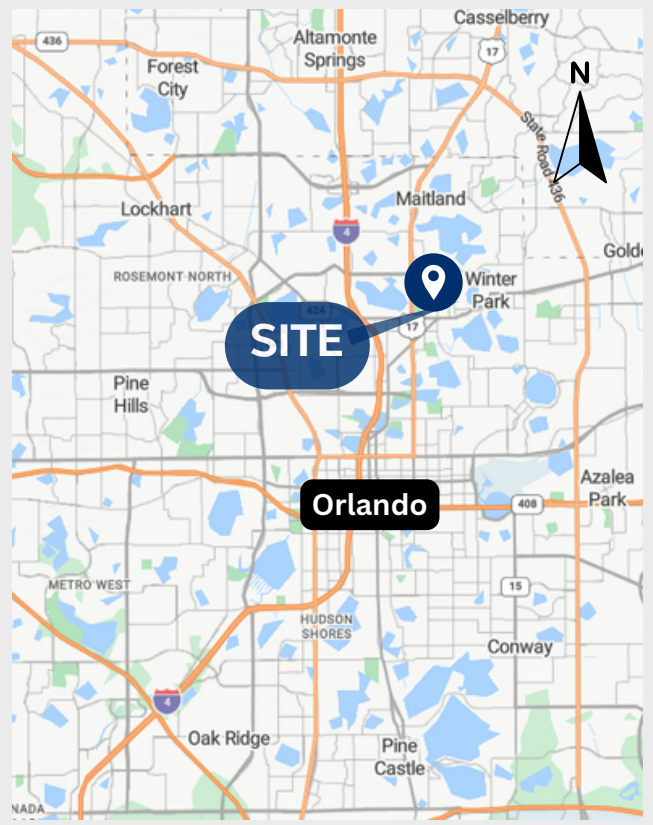
OFFICE SPACE AVAILABLE FOR LEASE

500 SOUTH PARK AVENUE, SECOND LEVEL WINTER PARK, FL 32789

Brian K. Watson, CCIM
Vice President Sales & Leasing
(407)-890-1340
bwatson@crossmarcservices.com

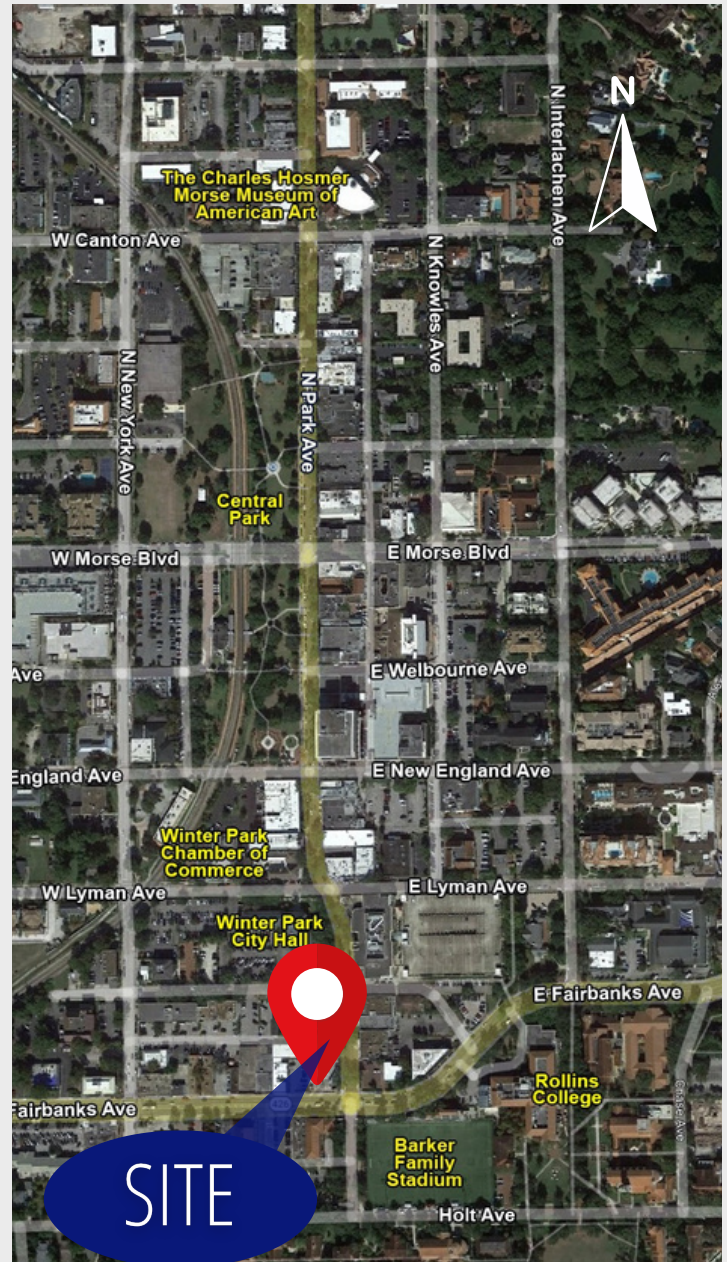
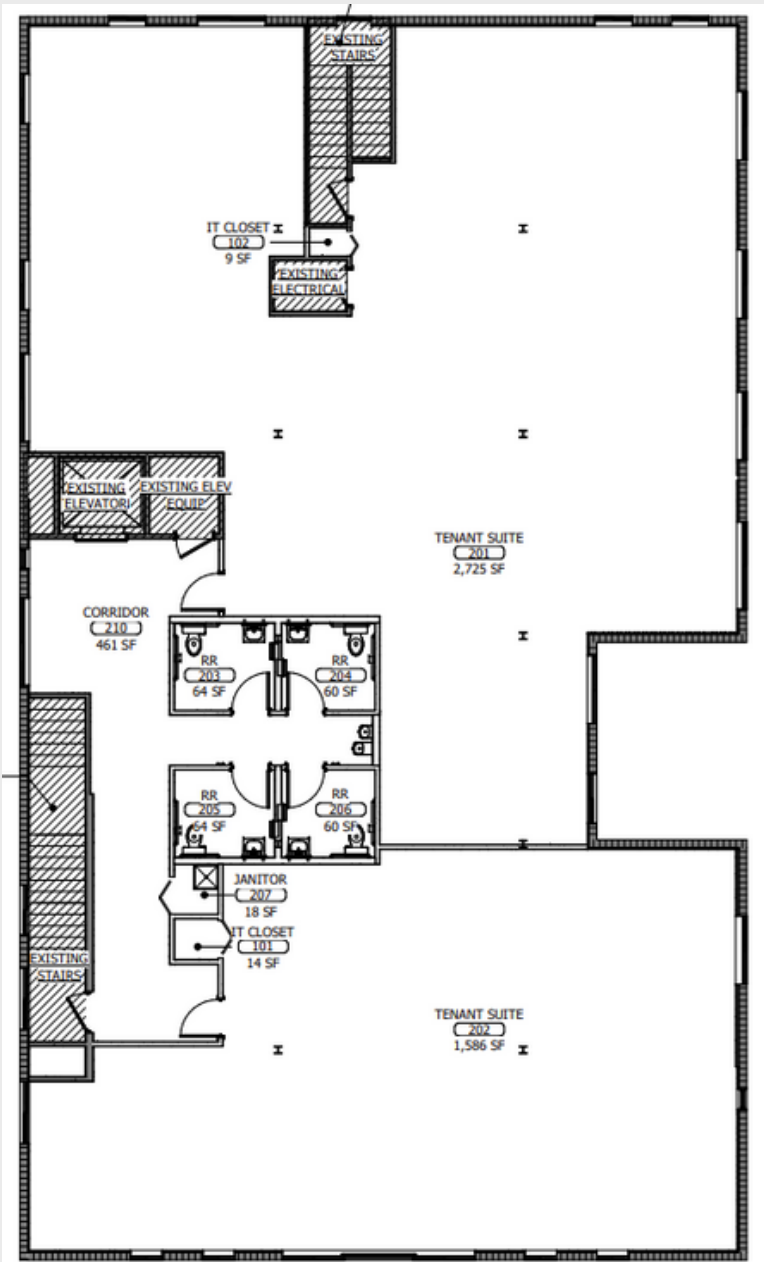
PROPERTY HIGHLIGHTS

- Prime Central Florida location, across from Winter Park City Hall
- Walking distance to Rollins College, retail, and restaurants
- Second-level office space available: 1,600 to 2,700 SF
- Prestigious Downtown Winter Park address
- Free parking in Winter Park Center Parking Lot
- Two separate offices or one large office space
- Cubicles and kitchen included
- Open lobby area
- Southeast corner of South Park Avenue and East Comstock Avenue
- One block north of Fairbanks Avenue



This information was obtained by sources deemed reliable, but we do not warrant or guarantee the accuracy or completeness thereof. Availability of this property is subject to prior rental or withdrawal of the property from the market at any time without notice.

FLOOR PLAN AND SQUARE FOOTAGE



- Second level office space available 1,600 to 2,700 SF
- 201 Tenant suite 2,725 square feet
- 202 Tenant Suite 1,586 square feet
- Two separate offices or can be demoed into one large office space of 4,300 square feet

**500 SOUTH PARK AVENUE, SECOND
LEVEL WINTER PARK, FL 32789**

Brian K. Watson, CCIM
Vice President Sales & Leasing
(407)-890-1340
bwatson@crossmarcservices.com





		1 Mile	3 Miles
	Population	7,950	97,721
	Households	3,290	43,363
	Median Age	37	40
	Median HH Income	\$72,565	\$74,112

**500 SOUTH PARK AVENUE, SECOND
LEVEL WINTER PARK, FL 32789**

Brian K. Watson, CCIM
Vice President Sales & Leasing
(407)-890-1340
bwatson@crossmarcservices.com

