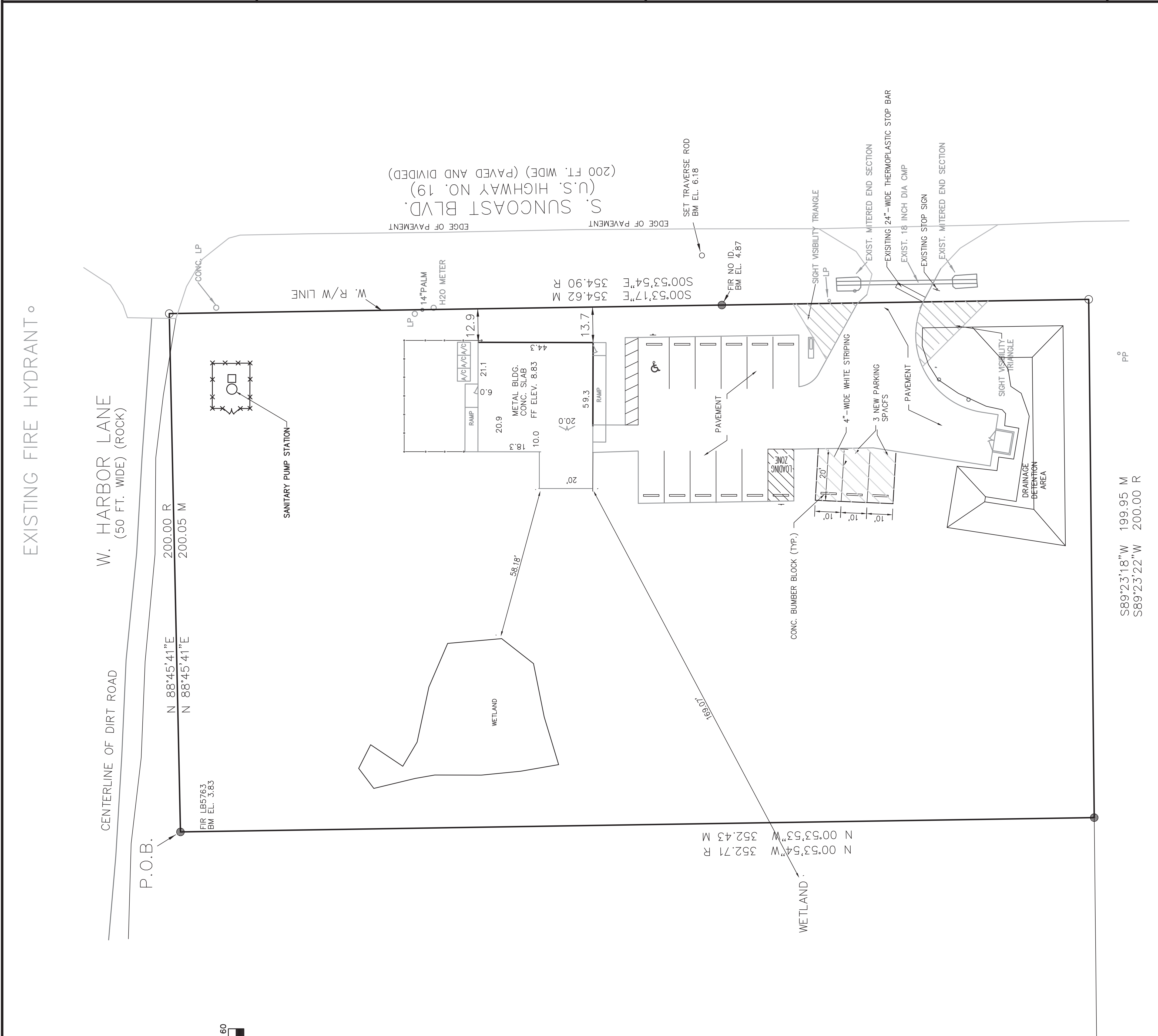


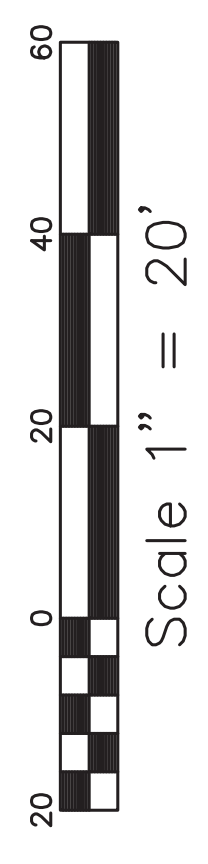
PROJECT TITLE	Greenhouse Bistro & Market - Deck & Adnl'l Parking 2420 S. Suncoast Blvd., Homosassa
SHEET TITLE	Site Plan

OWNER:	Fultuns Holdings LLC
DESIGNER:	FURMAN & HILBERT ENGINEERING, INC. 708 U.S. HIGHWAY 41 SOUTH INVERNESS, FLORIDA 34450 TELEPHONE: (352) 341-3555
ENGINEER:	F.H.
CAD Tech:	P.F.
DATE:	Oct. 2016

PROJ. No.	16-176
Scale	1" = 20'
Date	Oct. 2016
By	
Check	
Appr.	



PP  
S89°23'18"W 199.95 M  
S89°23'22"W 200.00 R



EXISTING FIRE HYDRANT.

W. HARBOR LANE  
(50 FT. WIDE) (ROCK)

CENTERLINE OF DIRT ROAD

P.O.B.

N 88°45'41"E  
N 88°45'41"E

200.00 R  
200.05 M

FIR 1B576.3  
BM EL. 3.83

SANITARY PUMP STATION

W. R/W LINE

S. SUNCOAST BLVD.  
(U.S. HIGHWAY NO. 19)  
(200 FT. WIDE) (PAVED AND DIVIDED)

WETLAND

WETLAND

CONC. BUMBER BLOCK (Typ.)

N 00°53'54"W 352.71 R  
N 00°53'53"W 352.43 M

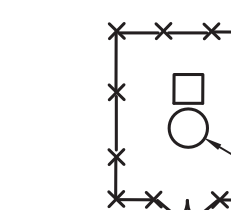
169.07

S00°53'17"E 354.62 M  
S00°53'54"E 354.90 R  
FIR NO ID 4.87  
BM EL. 4.87

20.9  
21.1  
12.9  
59.3  
13.7

114" PALM  
H2O METER

CONC. LP



EDGE OF PAVEMENT

SIGHT VISIBILITY TRIANGLE

EXIST. MITERED END SECTION

EXISTING 24" WIDE THERMOPLASTIC STOP BAR

EXIST. 18 INCH DIA CMP

EXISTING STOP SIGN

EXIST. MITERED END SECTION

SIGHT VISIBILITY TRIANGLE

PAVEMENT

DRAINAGE RETENTION AREA

SIGHT VISIBILITY TRIANGLE

PAVEMENT

DRAINAGE RETENTION AREA