



AVAILABLE VISTAWILLA DR - 0.89 AC COMMERCIAL LAND

387 Vistawilla Drive, Winter Springs, FL 32708



Brian K. Watson, CCIM
Vice President - Sales & Leasing

(407) 890-1341
bwatson@crossmarcservices.com





AVAILABLE VISTAWILLA DR - 0.89 AC COMMERCIAL LAND

387 Vistawilla Drive, Winter Springs, FL 32708

PROPERTY HIGHLIGHTS

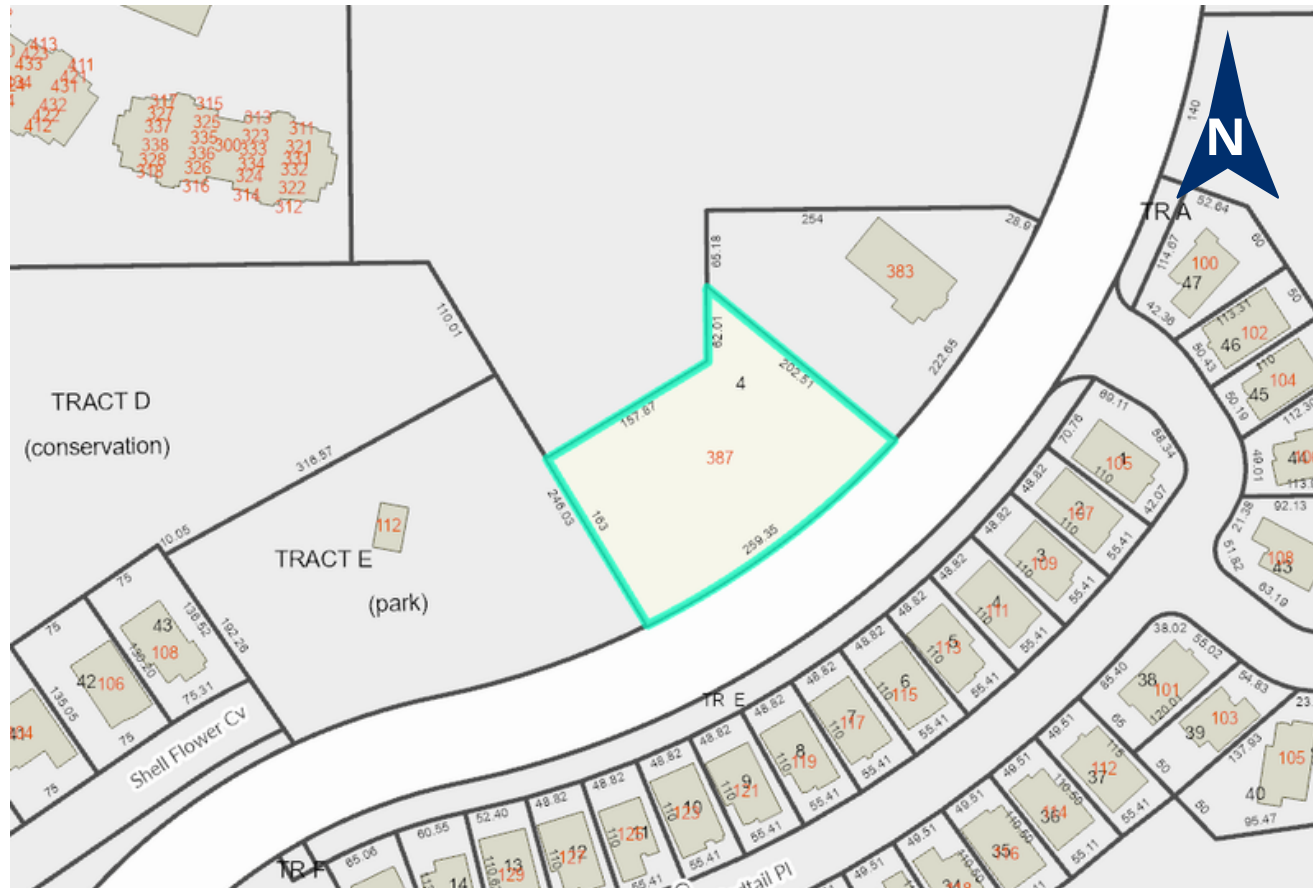
- Commercial land near SR 417
- Located in Winter Springs off of the well-traveled SR 434 with exposure to 25,000+ VPD
- Surrounding neighborhoods include Tuskawilla Country Club, Creeks Run and Legends Apartment Homes
- Zoning: PUD

AVAILABLE

LOT SIZE 0.89 AC

DEMOGRAPHICS

	1 Mile	3 Mile	5 Mile
Population	5,548	33,275	106,253
Average HH Income	\$142,134	\$125,138	\$108,047



Brian K. Watson, CCIM
Vice President - Sales & Leasing

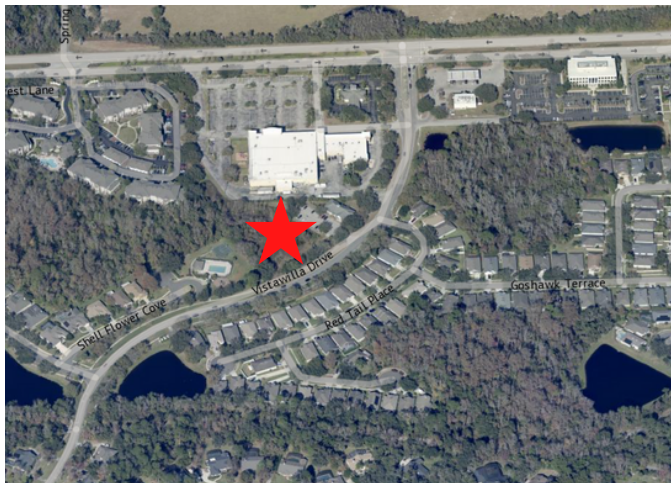
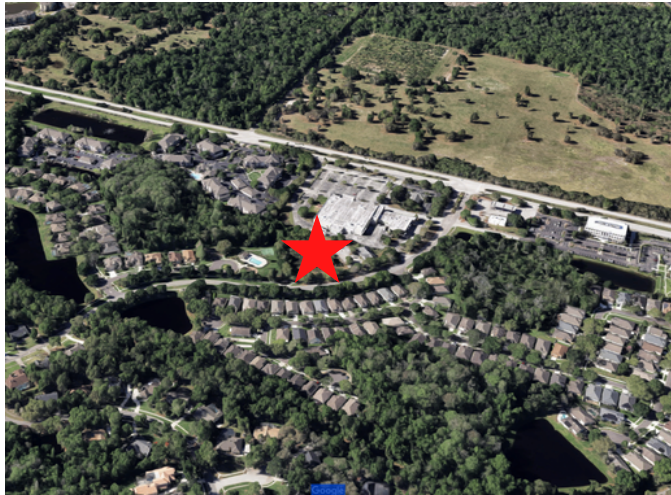
(407) 890-1341
bwatson@crossmarcservices.com





AVAILABLE VISTAWILLA DR - .89 AC COMMERCIAL LAND

387 Vistawilla Drive, Winter Springs, FL 32708



Brian K. Watson, CCIM
Vice President - Sales & Leasing

(407) 890-1341
bwatson@crossmarcservices.com

