

For Lease
±2,389-6,658 SF
Office Space



New Ownership! | Great Rates | Superb Central Palm Beach County Location

Commerce Pointe Gold

1800 South Australian Avenue
West Palm Beach, FL 33401

Property Features

- Fantastic leasing opportunity in the well-known and stunning Commerce Pointe Gold building
- Adjacent to DoubleTree by Hilton Hotel and I-95
- Central Palm Beach County location with great airport access and just five minutes from Downtown West Palm Beach
- Tenants enjoy ample parking, pond views and lush landscaping

For More Information:

Jason L. Sundook, SIOR

Principal | jsundook@mhcreal.com

Key Features:



**Great location
adjacent to I-95**



**Near the best of
the Palm Beaches**



**Spacious, fully
built-out space**



**Tenant improvement
allowance available**



**Lushly landscaped
with pond views**



FOR LEASE: COMMERCE POINTE GOLD, WEST PALM BEACH, FL

West Palm Beach Office Space Near Downtown & I-95



Near the Best of the Palm Beaches

- 1 mile from I-95 and 5 miles from the Florida Turnpike
- 1.5 miles from Downtown West Palm Beach including The Square West Palm, Clematis Street, Flagler Financial District and the Governmental Center & Courthouse
- Adjacent to Grandview Public Market
- Minutes from the Palm Beach International Airport and the Town of Palm Beach

For more information

Jason L. Sundook, SIOR

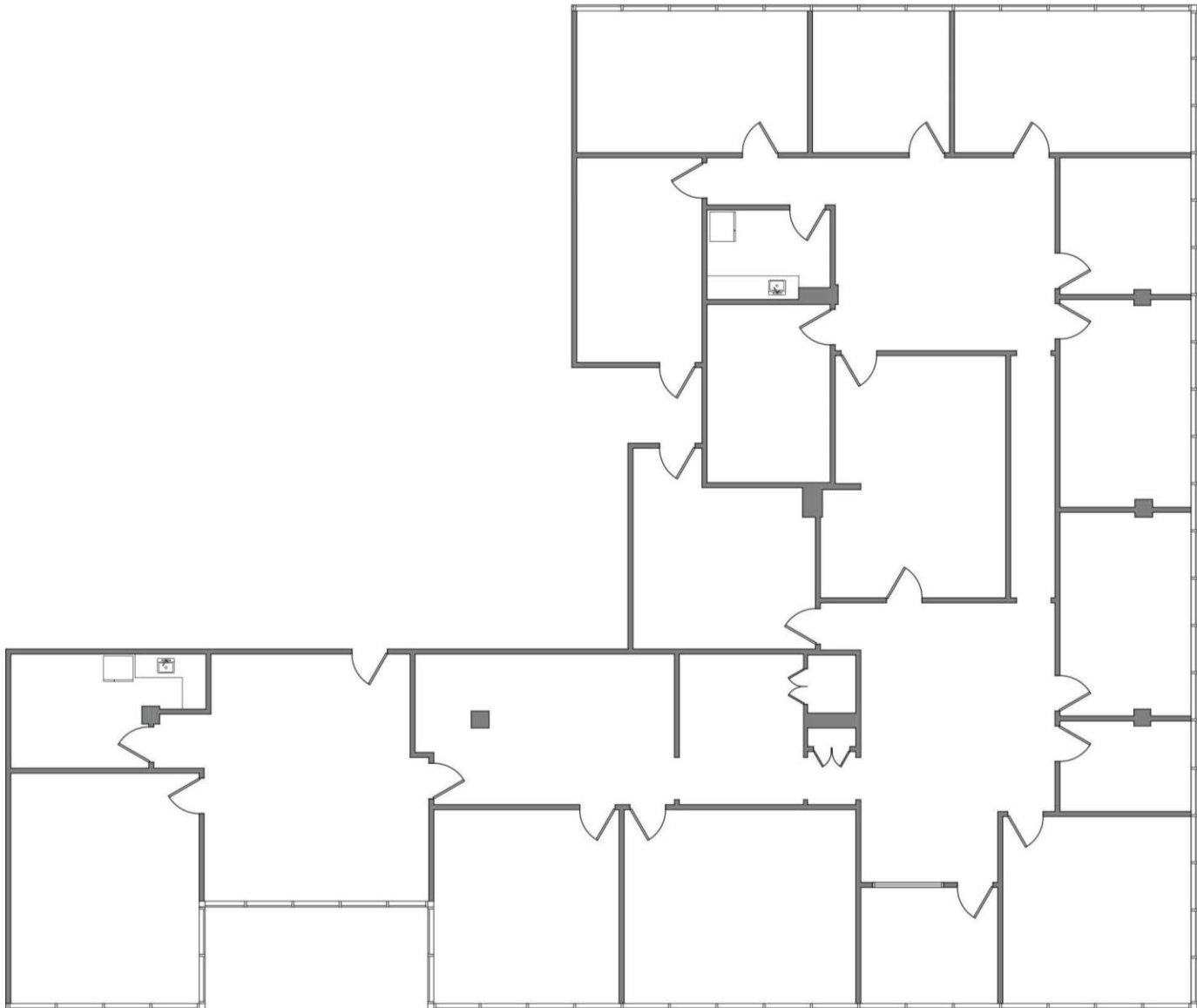
Principal | jsundook@mhcreal.com



FOR LEASE: COMMERCE POINTE GOLD, WEST PALM BEACH, FL

Great Layout with Flexible Floor Plan Options

Suite 203 ±6,658 SF *divisible to approx. 2,389 SF*



Not to scale. Subject to error.

For More Information:

Jason L. Sundook, SIOR| jsundook@mhcreal.com



561 471 8000

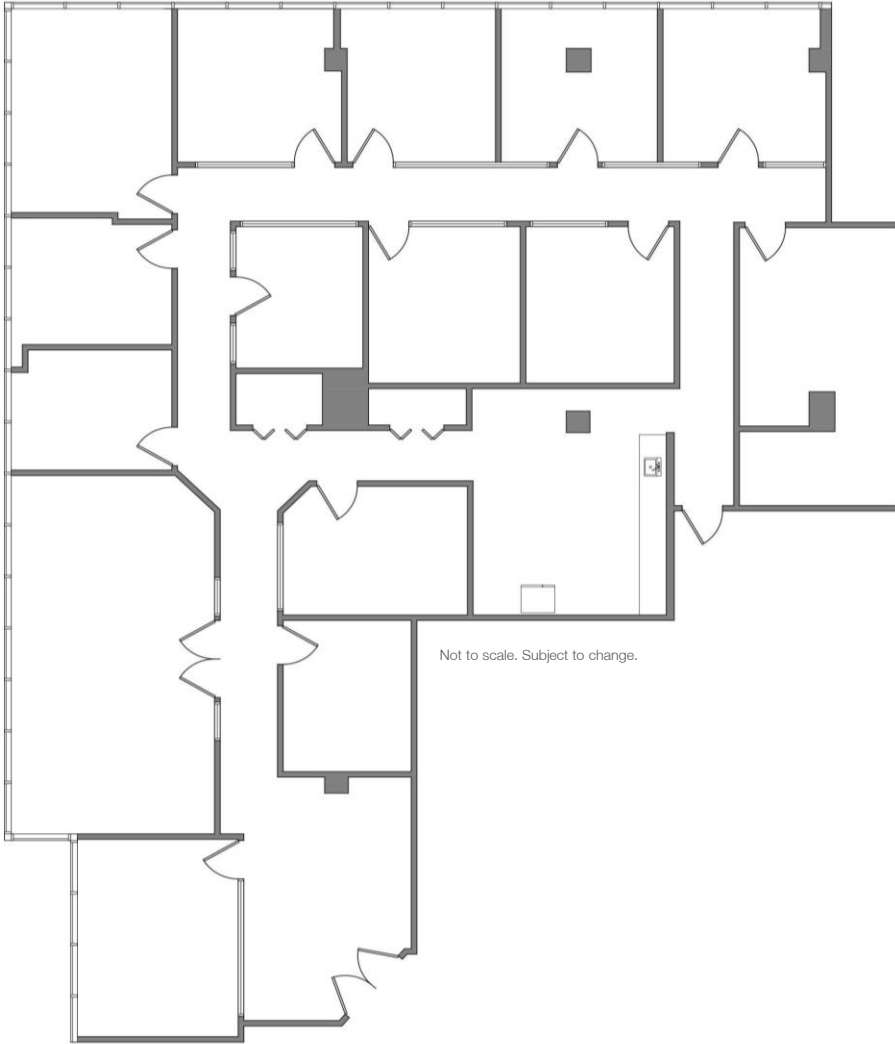


www.mhcreal.com

FOR LEASE: COMMERCE POINTE GOLD, WEST PALM BEACH, FL

Spacious. Immediate Availability. Great Views.

Suite 301 ±4,364 SF



Suite Features

- Highly improved suite with glass panel accents
- Reception area
- Conference room
- Board room
- 12 private offices
- Kitchen/breakroom
- Storage rooms

For More Information:

Jason L. Sundook, SIOR | jsundook@mhcreal.com



561 471 8000



www.mhcreal.com