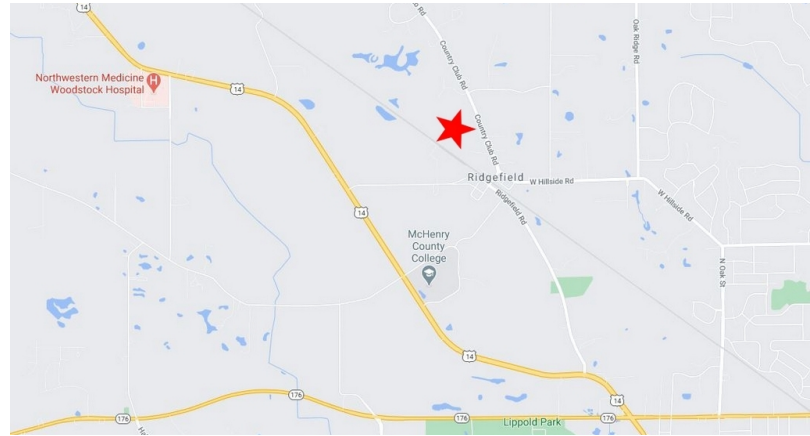


0 Country Club Rd.
Woodstock, IL 60098

For Sale

MLS #11812196

LAND



INDUSTRIAL LAND
± 17.5 ACRES

\$995,000

(\$1.30 PSF)

**LARGE VACANT INDUSTRIAL PARCEL
PRE-APPROVED FOR UNION PACIFIC RAIL SPUR**

Very rare McHenry County large ±17.5 acre industrial lot for sale at just \$1.30 psf. Property is under the jurisdiction of the county, not any municipality. Adjacent to a Union Pacific rail line. A rail spur has been approved for construction.

Specifications

Description:	Industrial Land
Land Size:	17.5 Acres (762,300 SF)
Topography:	Flat
Environmental Status:	TBD
Utilities:	To Site
Sewer/Water:	Septic / Well Required
Frontage Dimensions:	442'
Zoning:	Industrial
Taxes:	\$817.88 (2022)
PIN #:	13-24-300-018

[CLICK HERE TO VIEW OUR WEBSITE](#)

No warranty or representation is made as to the accuracy of the foregoing information. Terms of sale or lease and availability are subject to change or withdrawal without notice. This document is for information purposes only. No offer of sub-agency is being made.



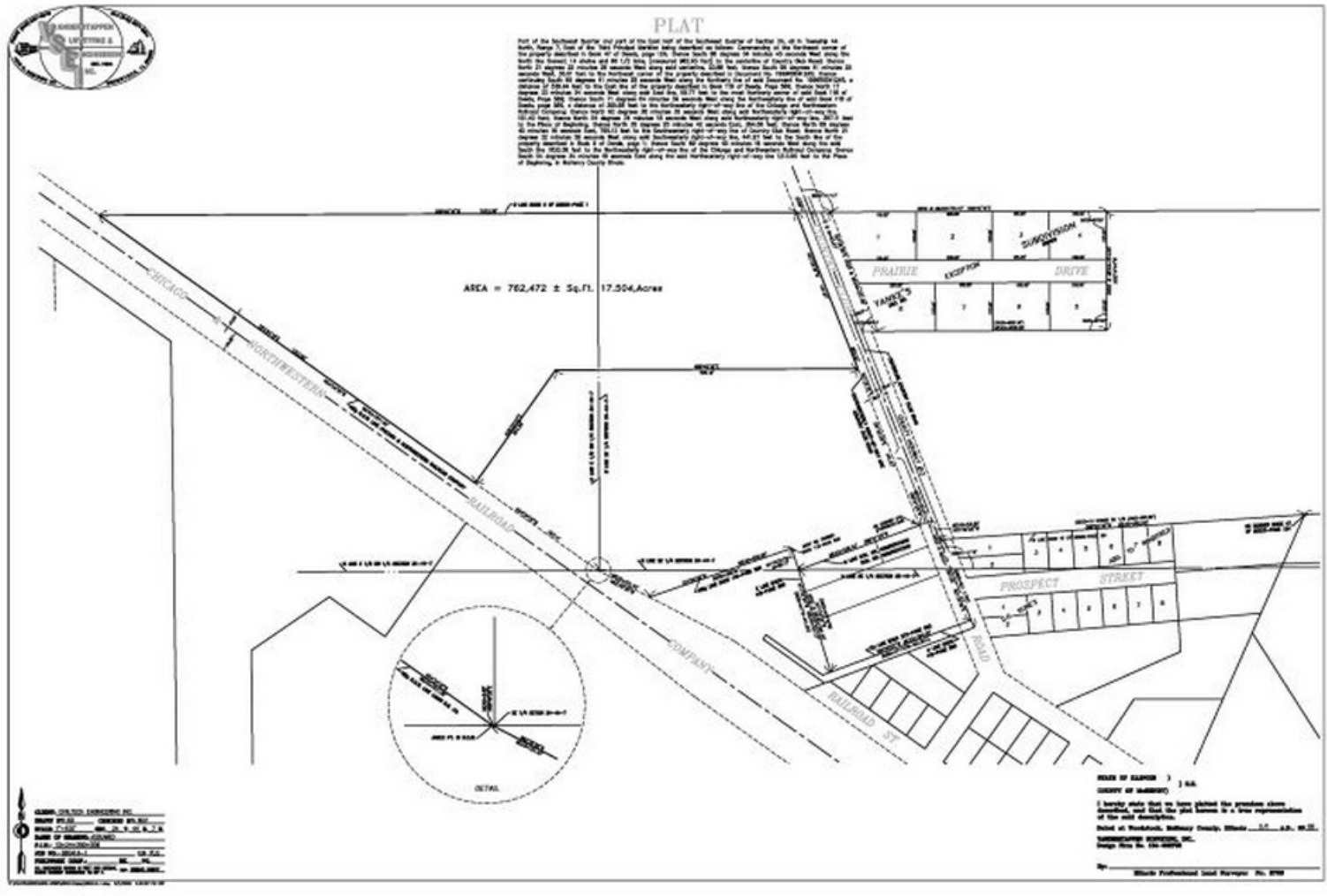
www.PremierCommercialRealty.com | 847.854.2300 | 9225 S. Route 31, Lake in the Hills, IL 60156

Senior Broker
Michael Deacon
MichaelD@PremierCommercialRealty.com
O: 847.854.2300 xx28 C: 815.814.6500

0 Country Club Rd.
Woodstock, IL 60098

For Sale

LAND



CLICK HERE TO VIEW OUR WEBSITE

No warranty or representation is made as to the accuracy of the foregoing information. Terms of sale or lease and availability are subject to change or withdrawal without notice. This document is for information purposes only. No offer of sub-agency is being made.

PREMIER
COMMERCIAL REALTY

Senior Broker
Michael Deacon

MichaelD@PremierCommercialRealty.com
O: 847.854.2300 xx28 C: 815.814.6500

www.PremierCommercialRealty.com | 847.854.2300 | 9225 S. Route 31, Lake in the Hills, IL 60156