

LINE STRIPING



PAVEMENT MAINTENANCE

OUR SERVICES

- Line Striping
- Asphalt Maintenance & Repair
- Specialty Flooring
- Interior Safety Markings
- Additional Parking Lot Services

BE PART OF THE EVERLINE DIFFERENCE



We provide great quality by following our CORE Quality System!

CLEAR SCOPE: We ensure that there is a clear scope of work generated from our clients for our crews.

OPERATIONS REPORT: Our crews utilize cloud-based technology providing us with up-to-date and immediate progress reports in real time while on site.

REACH OUT: We contact each client after our crew has reported the project to be complete to ensure satisfaction on a job well done.

EVALUATE: Internal and external evaluation of each project allows us to become better service providers and offer better pricing.

OUR STORY

It started in 2012 with one machine and the determination to disrupt an industry. Since then, EverLine has grown each and every year.

Line striping began as—and still is—our core business, but in our journey to become a one-stop shop for all of our customers, we have expanded our offerings to include a breadth of pavement maintenance services.

As an award-winning business with locations across Canada and the United States (and now with two appearances on CBC's Dragon's Den) we are uniquely poised to offer our great customer service, value and quality to each and every parking lot in America.

WITH OVER 5 MILLION LINES PAINTED AND COUNTING, THERE'S NO SLOWING US DOWN!

OUR 3 KEY DIFFERENTIATORS

1 *Our high quality is systemized.*

2 *We constantly innovate.*

3 *We answer the call.*



Rethink Pavement Maintenance

www.EverLineCoatings.com
hello@everlinecoatings.com



1-83-EVERLINE
(1-833-837-5463)

Locations across the country.
Franchise opportunities available.



WE RECEIVED A DEAL ON CBC'S DRAGONS' DEN!
Watch **Episode 9, Season 14**, the Disrupt Den special episode, online at cbc.ca/dragonsden.

LINE STRIPING

- Parking Lot Lines
- Crosswalks / Arrows
- New Parking Lot Layouts
- Curbing / Parking Blocks
- Custom Stenciling



CUSTOM STENCILING

It's not pavement marking,
it's branding.

- » Long lasting and durable product options.
- » Custom logos and design creation available.

Join the emerging national trend — go viral!



Rethink Pavement Maintenance

www.EverLineCoatings.com
hello@everlinecoatings.com



1-83-EVERLINE
(1-833-837-5463)

Locations across the country.
Franchise opportunities available.



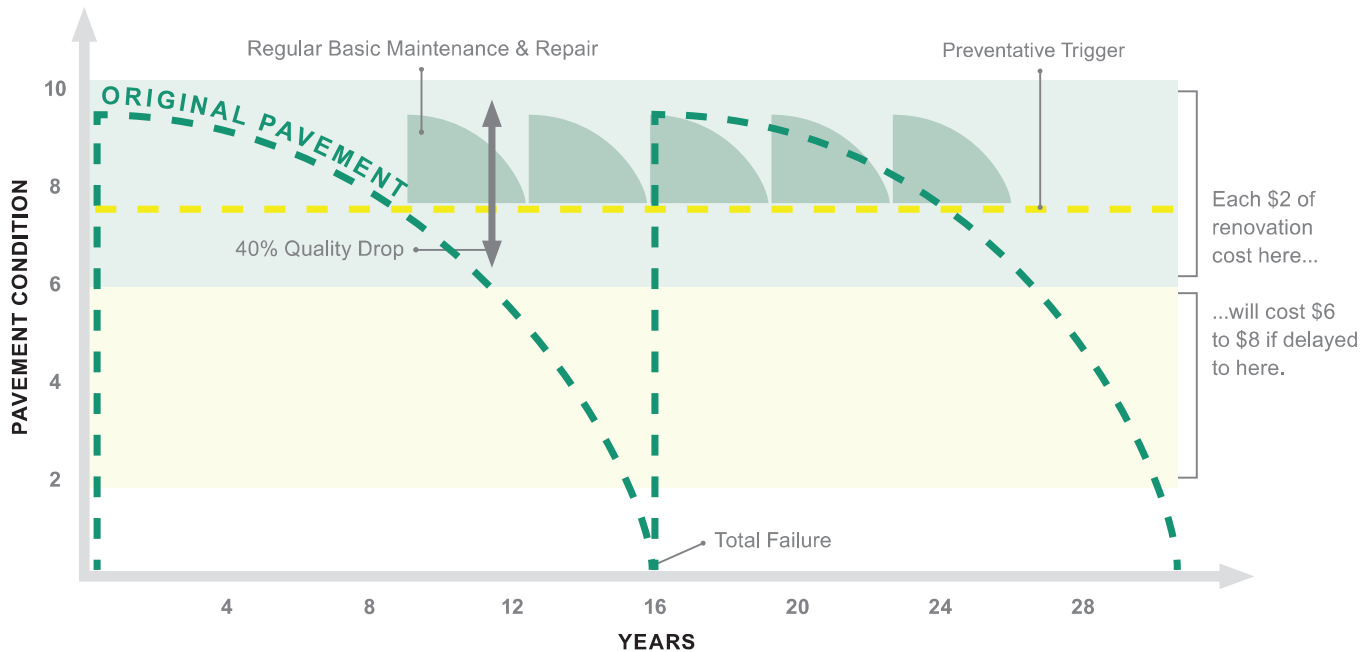
THE BEST BRANDING
OPPORTUNITY IS RIGHT
UNDER YOUR FEET!

PATRONS WILL
KNOW THEY'RE ON
YOUR PROPERTY
AND WILL TELL
THEIR FRIENDS!

ASPHALT MAINTENANCE

Double the life of your asphalt with a scheduled program of pavement maintenance that includes sealcoating, crack filling, pothole repair and more!

THE COST OF "TIMELY" MAINTENANCE



Sealcoating is a fraction of the cost of repairing or replacing asphalt pavement.



SEALCOAT

Sealcoating replaces the asphalt binders that are lost due to UV rays and harsh weather, protecting your asphalt and making it appear brand new!

75%

of cracks left untreated form into potholes within three years.



CRACK FILL

Crack Filling is the most cost-effective way to extend the life of your asphalt. It works to prevent further water penetration into the sub-grade, reducing further asphalt deterioration.



Rethink Pavement Maintenance

www.EverLineCoatings.com
hello@everlinecoatings.com



1-83-EVERLINE
(1-833-837-5463)

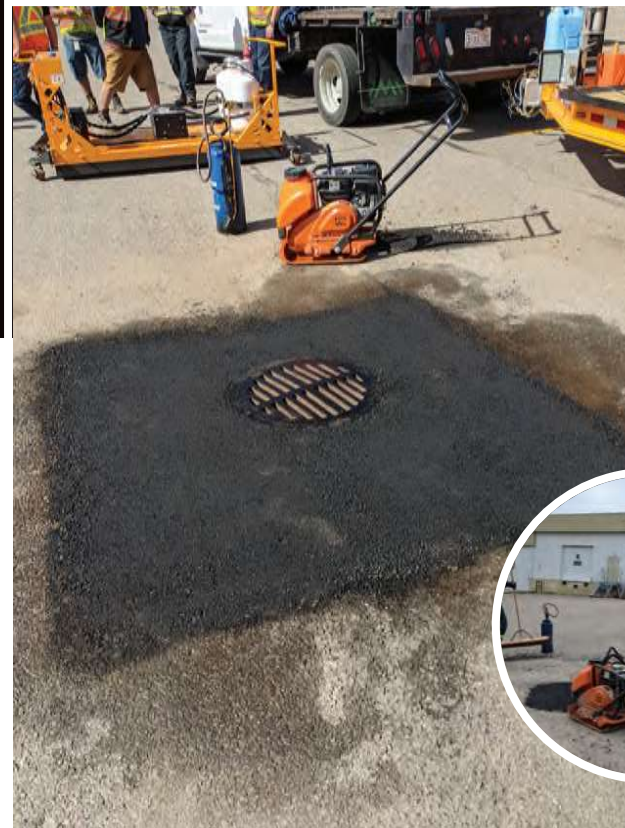
Locations across the country.
Franchise opportunities available.



ASPHALT REPAIR

Repair your asphalt by utilizing our cutting-edge infrared technology.

With EverLine, your Asphalt Repairs will be a fraction of the cost! Our system ensures a better, seamless end result with no cut lines — preventing further water penetration.



APPLICATIONS FOR INFRARED ON ASPHALT SURFACES

- Potholes
- Catch basin repairs
- Settled areas such as dips in the road or birdbaths
- Failed pavement joints
- Adding asphalt onto existing pavement such as speed bumps and handicap ramps
- Oil spots in parking areas

ADVANTAGES OF INFRARED PATCHING

- » 95% recycled
- » Seamless joints
- » Reduced material
- » Reduced expenses

Our repairs are quick — 30 minutes start to finish. No need to shut down your parking lot!



Rethink Pavement Maintenance

www.EverLineCoatings.com
hello@everlinecoatings.com



1-83-EVERLINE
(1-833-837-5463)

Locations across the country.
Franchise opportunities available.



REDUCE LIABILITY

- » Eliminate tripping hazards
- » Level out and regrade sunken asphalt
- » Repair cracked areas to stop more potholes from developing



Safety Lines and Markings HELP YOUR BUSINESS

SAFETY

Employee safety is facilitated by identifying and eliminating hazards through:

- Pedestrian walkways
- Traffic lanes
- Toe lines
- Loading docks
- Emergency exit markings

EFFICIENCY

- Increased productivity through enhanced organization
- Maximize logistical space
- Inventory management
- Time and cost saving staging areas

DURABILITY

- Long lasting, highly visible options to provide safety solutions on any budget
- Proven to withstand extreme traffic volume
- Time-tested solutions for any warehouse or distribution centre conditions

INTERIOR SAFETY

BENEFITS OF SAFETY LINES AND MARKINGS

- » *Fewer workers' compensation claims lead to a higher experience rating, saving you money.*
- » *Eliminate lost time due to injury.*
- » *Employees recognize your company's dedication to their safety and well-being.*
- » *Lower liability exposure.*



Rethink Pavement Maintenance

www.EverLineCoatings.com
hello@everlinecoatings.com



1-83-EVERLINE
(1-833-837-5463)

Locations across the country.
Franchise opportunities available.





WE WILL WORK WITH YOU TO BRING THE BEST VALUE FOR EVERY BUDGET.

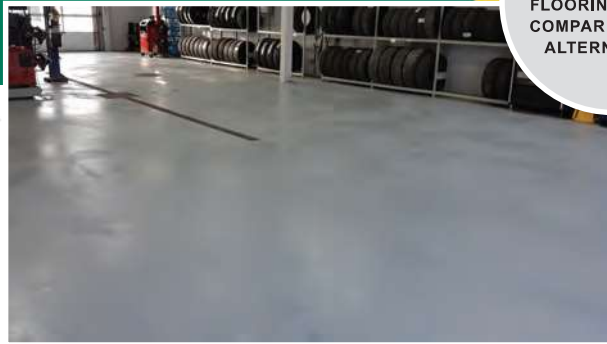
SPECIALTY FLOORING

Slippery surfaces caused by snow, ice, rain and moisture can be a liability concern for your business. Applying a slip resistant specialty coating to your entrances or walkways helps to eliminate the chances of slips and falls, protects your concrete and looks great!

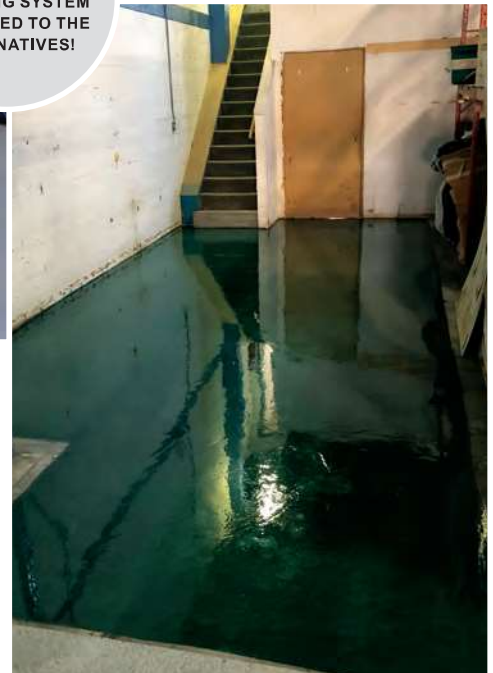
WHY EPOXY FLOORING?

- Creates a slip resistant surface
- Easy to clean
- Chemically resistant
- Protects your concrete

EPOXY IS THE MOST AFFORDABLE FLOORING SYSTEM COMPARED TO THE ALTERNATIVES!



⋈ *Our slip resistant specialty coatings can be applied to all types of indoor and outdoor surfaces, including walkways, bike paths or roadways.*



⋈ *Epoxy is highly customizable to each project (any color, design or lifetime).*



Rethink Pavement Maintenance

www.EverLineCoatings.com
hello@everlinecoatings.com



1-83-EVERLINE
(1-833-837-5463)

Locations across the country.
Franchise opportunities available.



Additional PARKING LOT SERVICES

We focus on quality and on-time, on-budget product and service completion.



SWEEPING

We offer sweeping services for outdoor parking lots and parking garages.



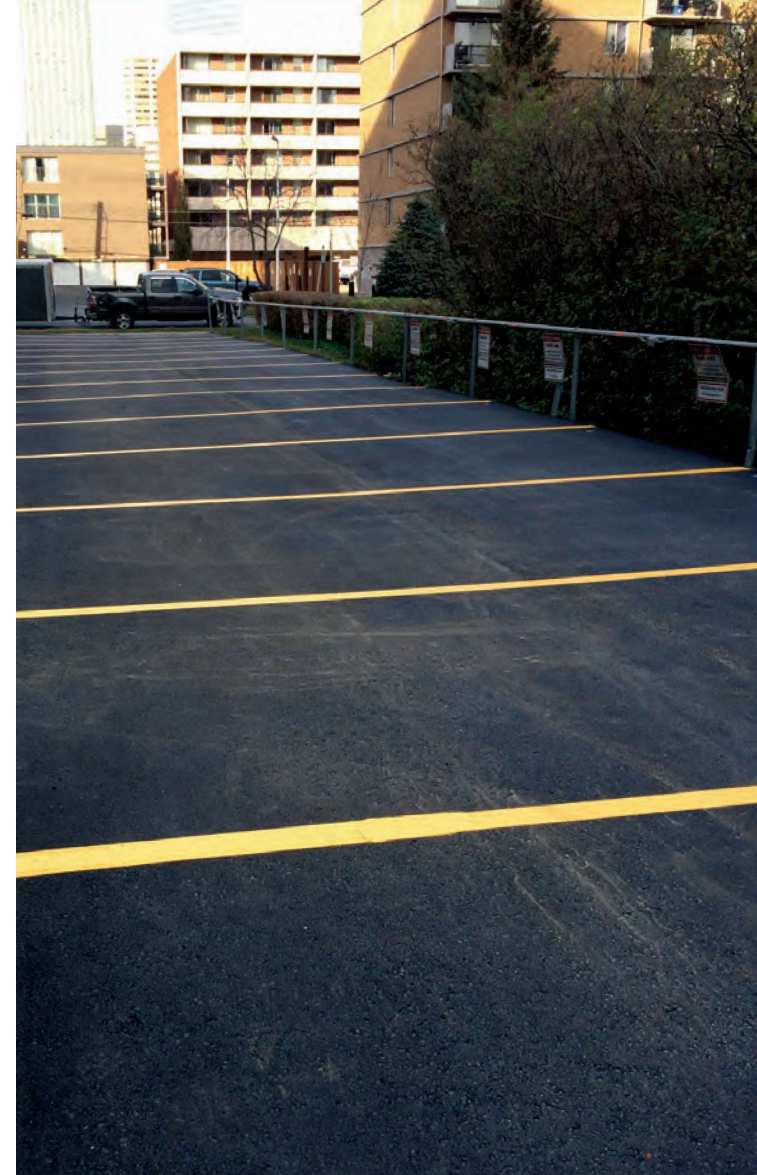
POWER WASHING

Our crews are experienced and trained in power washing all types of buildings, sidewalks, parking lots and parking garages.



INSTALLATIONS

Bollard covers, Parking Blocks, Speed Bumps & Signs are all expertly installed by our crews.



Rethink Pavement Maintenance

www.EverLineCoatings.com
hello@everlinecoatings.com

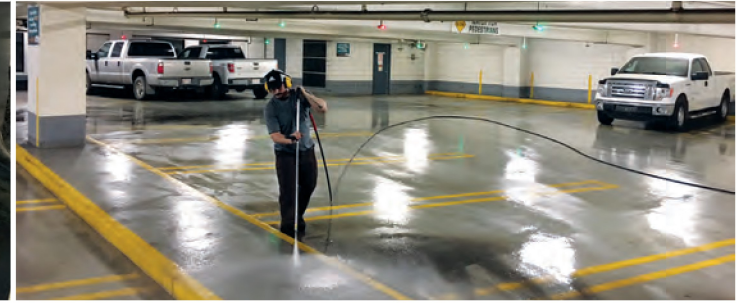


1-83-EVERLINE
(1-833-837-5463)

Locations across the country.
Franchise opportunities available.



*We will work with you
to bring the best value
for every budget.*



Sweep & Scrub Services

Power Washing

Membrane Repair and Installation

Line Striping

Commercial Painting

INCLUDING CUSTOM STENCILING!

PARKING GARAGE MAINTENANCE

*Budget friendly.
Quality focused.*



Rethink Pavement Maintenance

www.EverLineCoatings.com
hello@everlinecoatings.com



1-83-EVERLINE
(1-833-837-5463)

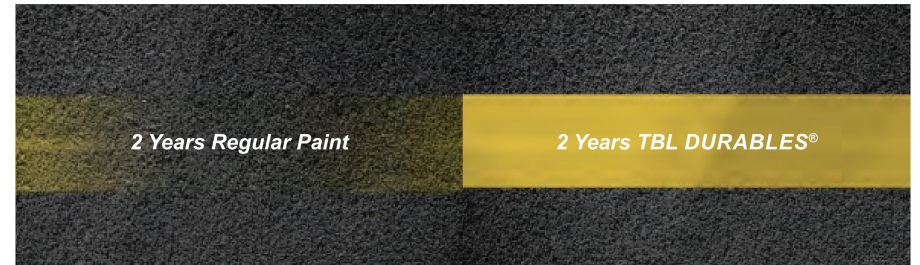
Locations across the country.
Franchise opportunities available.





LONG LASTING AND DURABLE TBL DURABLES®

Join the revolution in traffic paint technology and save on maintenance costs for your property.



TBL DURABLES® stands up to sun, sand, salt, heat and cold and is best used on high traffic areas such as Crosswalks, Stop Bars, Lane Lines, Arrows, and Stenciling.

10x
MORE
ENVIRONMENTALLY
FRIENDLY!

- » Not paint, but plastic
- » Greater reflectivity
- » 3x more durable and resistant to wear
- » More environmentally friendly than oil or water-based paint
- » Less expensive
- » Reduces liability with slip resistant material

Property managers and business owners realize a **20–30% savings** over three years.



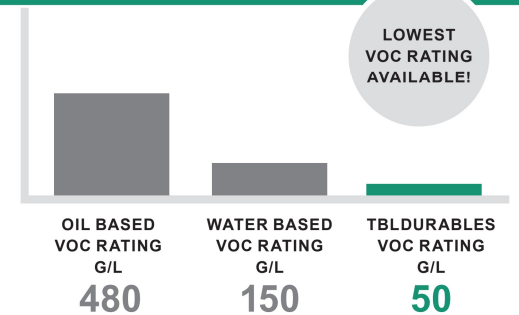
Rethink Pavement Maintenance

www.EverLineCoatings.com
hello@everlinecoatings.com



1-83-EVERLINE
(1-833-837-5463)

Locations across the country.
Franchise opportunities available.





CONTACT US TODAY

and experience the EverLine difference!

www.EverLineCoatings.com

 /EverLineCoatings  /EverLineCoatngs  @EverLineCoatings  EverLine Coatings and Services

FRANCHISEE

Company: Everline Coatings and Services Orlando-South

Name: Thomas Macon, President

Phone: 407-349-7878

Address: 1535 E. Altamonte Dr
Fern Park, FL 32730

Local Orlando digital presence:

Webpage: <https://everlinecoatings.com/us/fl/orlando/south/>

Facebook: <https://www.facebook.com/EverLineCoatings.OrlandoSouth>

LinkedIn: <https://www.linkedin.com/company/everline-coatings-and-services-orlando-south/>

JOIN OUR GROWING LIST OF SATISFIED CLIENTS

