



Property Details

- Two-story office building with high visibility from Maitland Boulevard at Interstate-4
- Newly renovated lobby
- Building and Monument signage opportunity
- Ideal for Professional or Medical Office
- Easy access to Interstate-4 and downtown Orlando
- Genesis Health Club, hotels and restaurants nearby
- Generous parking at a ratio of 4/1,000 RSF
- 30 covered parking spaces available



Greg Morrison, CCIM, SIOR
Principal, Managing Director
D 407.440.6640
greg.morrison@avisonyoung.com

Patrick Morrison
Senior Associate
D 407.440.6649
patrick.morrison@avisonyoung.com

135 W Central Blvd
Suite 700
Orlando, FL 32801



Nearby Amenities:



Area Demographics:

2021 Population

- 1-mile radius: 6,684
- 3-mile radius: 99,234
- 5-mile radius: 254,809

2021 Avg HH Income

- 1-mile radius: \$107,717
- 3-mile radius: \$ 86,739
- 5-mile radius: \$ 90,480

2026 Population

- 1-mile radius: 7,493
- 3-mile radius: 106,882
- 5-mile radius: 272,442

2026 Avg HH Income

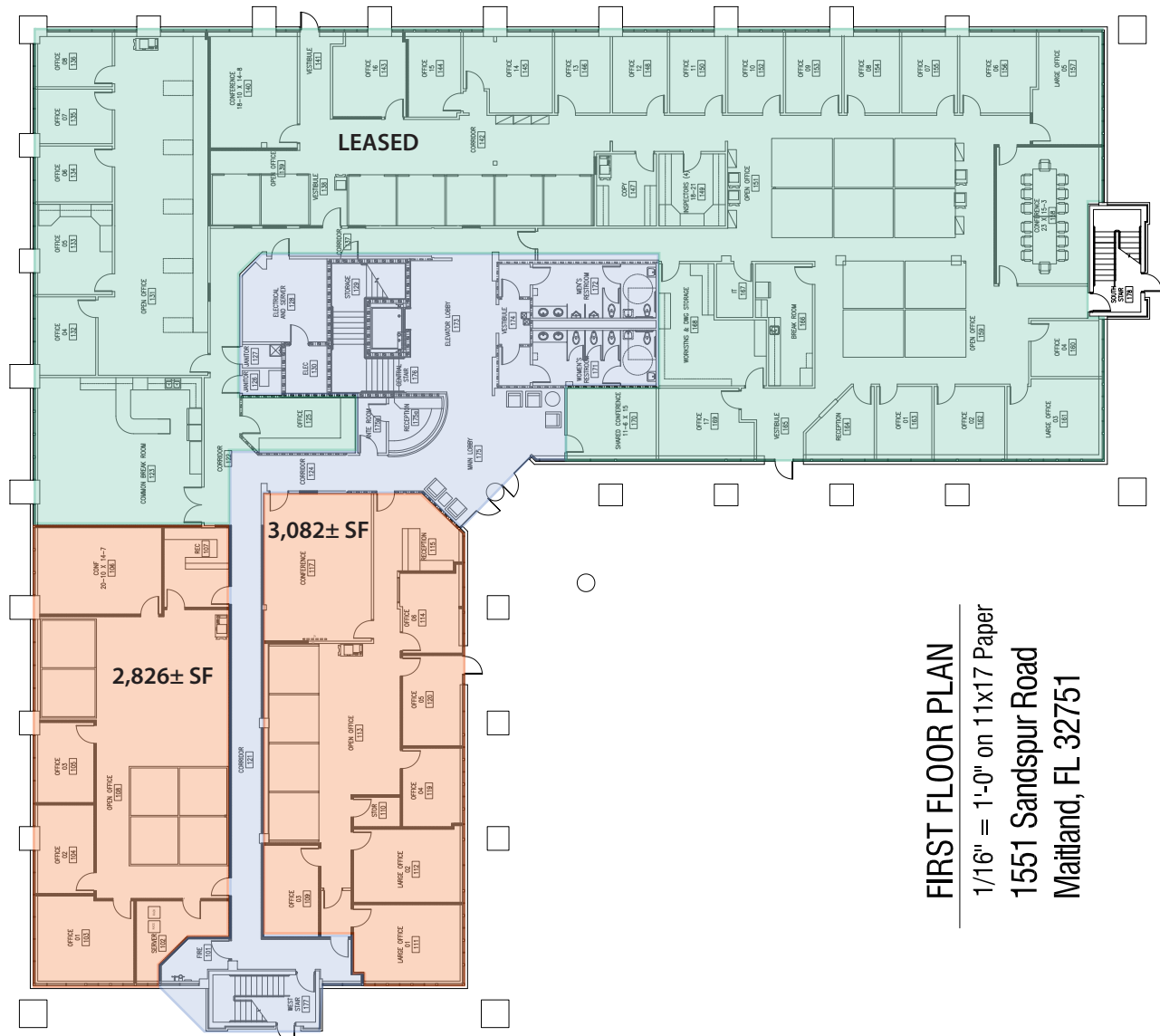
- 1-mile radius: \$120,521
- 3-mile radius: \$ 96,038
- 5-mile radius: \$100,493

Greg Morrison, CCIM, SIOR
Principal, Managing Director
D 407.440.6640
greg.morrison@avisonyoung.com

Patrick Morrison
Senior Associate
D 407.440.6649
patrick.morrison@avisonyoung.com

135 W Central Blvd
Suite 700
Orlando, FL 32801

First Floor - 18,951± SF



FIRST FLOOR PLAN
 1/16" = 1'-0" on 11x17 Paper
 1551 Sandspur Road
 Maitland, FL 32751

Greg Morrison, CCIM, SIOR
 Principal, Managing Director
 D 407.440.6640
 greg.morrison@avisonyoung.com

Patrick Morrison
 Senior Associate
 D 407.440.6649
 patrick.morrison@avisonyoung.com

135 W Central Blvd
 Suite 700
 Orlando, FL 32801

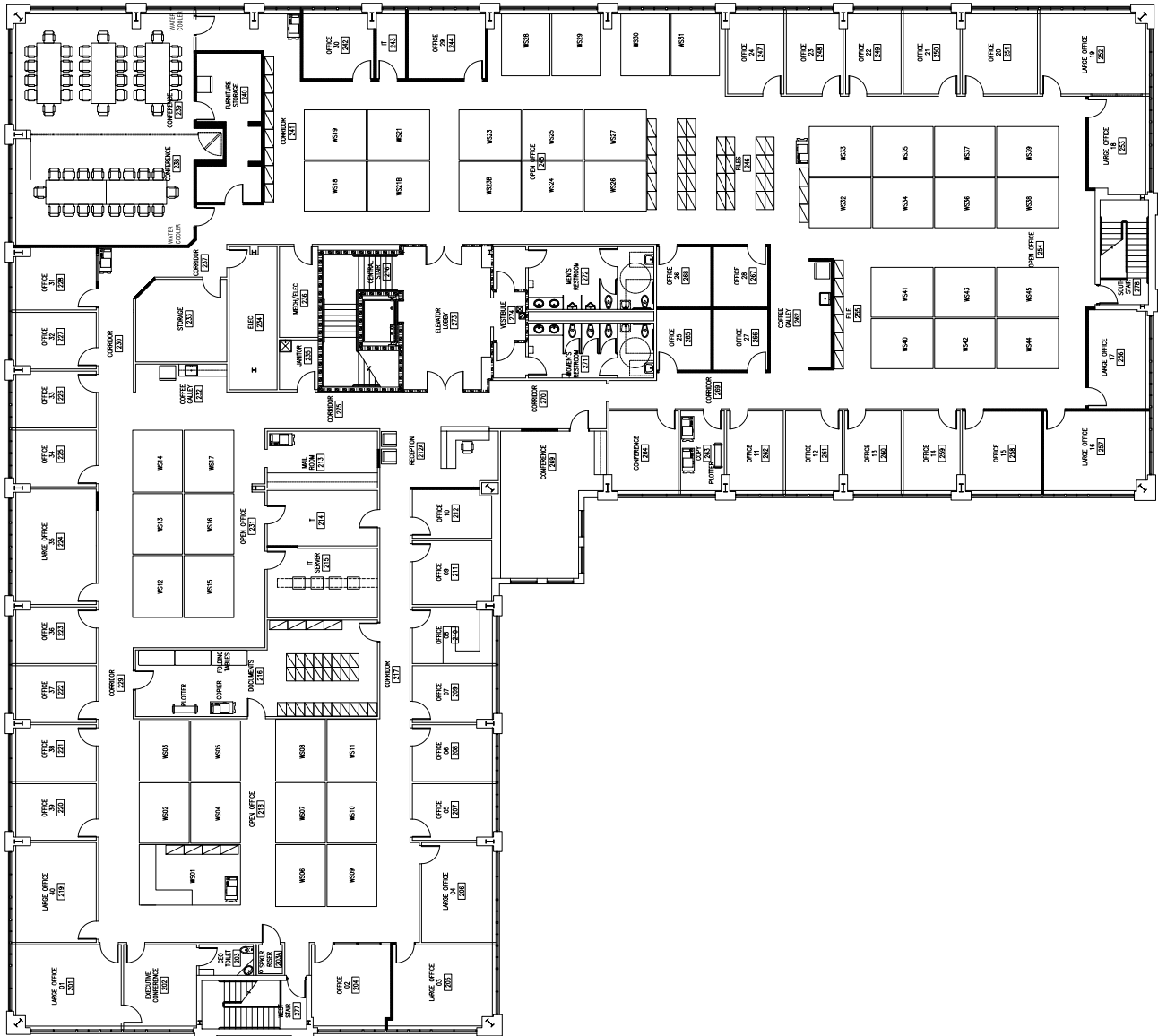


42,260± RSF Office Building For Lease

1551 Sandspur Road

Maitland, FL 32751

Second Floor - 23,309± SF



Greg Morrison, CCIM, SIOR
Principal, Managing Director
D 407.440.6640
greg.morrison@avisonyoung.com

Patrick Morrison
Senior Associate
D 407.440.6649
patrick.morrison@avisonyoung.com

135 W Central Blvd
Suite 700
Orlando, FL 32801