

Stand-Alone Commercial Building In Heart Of Melbourne

420 S. Babcock Street, Melbourne, FL 32901

Concrete Block / Centrally Located / Purchase or Lease



OFFERING SUMMARY

Sale Price: \$379,000

Acreage: 0.17 Acres

Facility SF: 2,094 SF

Zoning: City of Melbourne
Neighborhood
Commercial (C-1)

PROPERTY OVERVIEW

Interior: Open Configuration, 3 Private Offices, Break Area, 1 Restroom, Storage
Carpet & Drop Ceiling Throughout
City Water/Sewer & FPL Electric
Exposure to est. 24,500 VPD on Babcock Street
C1 Zoning: Office, Retail, Medical, Childcare/Schools & More!
Seller would Consider a Lease-to-Purchase Subject to Buyer Credit/Financials
Seller will consider Selling 425 Butler Street (home to the west)
Also Available For Lease

LOCATION OVERVIEW

Located in the heart of Melbourne approximately halfway between US 192 & Eau Gallie Boulevard. Close proximity to the Melbourne International Airport, Downtown Melbourne, Melbourne Square Mall and all of the other shopping, dining and schools that the area has to offer. Easily accessible via nearby US1, Nasa Boulevard & Apollo Boulevard. Make this the future home for your business today!

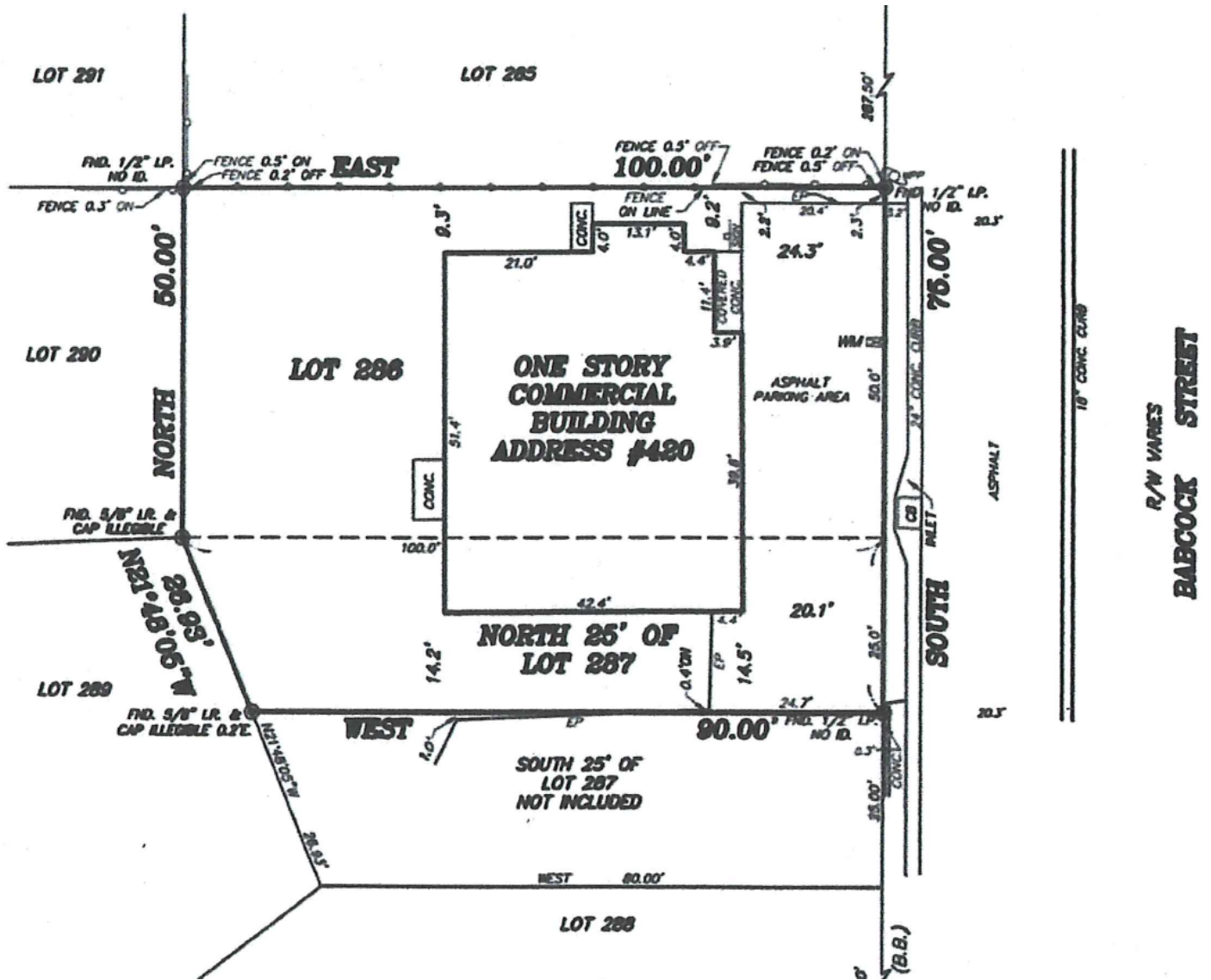
Zachary Ullian

Broker Associate
Cell: 321.750.3439
zach@ullianrealty.com

Stand-Alone Commercial Building In Heart Of Melbourne

420 S. Babcock Street, Melbourne, FL 32901

Survey



Zachary Ullian

Broker Associate

Cell: 321.750.3439

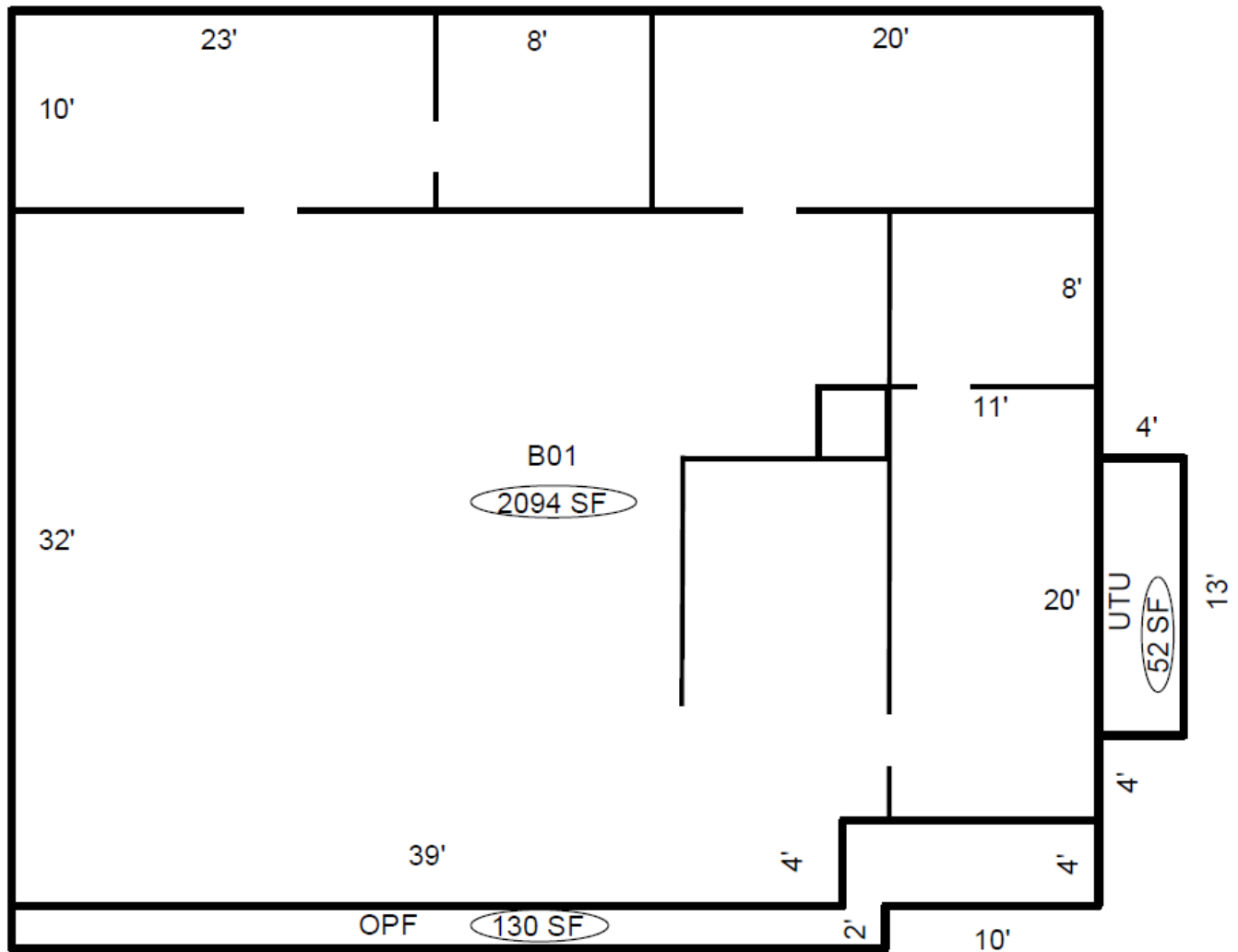
zach@ullianrealty.com

Stand-Alone Commercial Building In Heart Of Melbourne

420 S. Babcock Street, Melbourne, FL 32901

Floor Plan

Dimensions & Wall Locations Estimated



Zachary Ullian

Broker Associate

Cell: 321.750.3439

zach@ullianrealty.com

Stand-Alone Commercial Building In Heart Of Melbourne

420 S. Babcock Street, Melbourne, FL 32901

Interior Photos



Zachary Ullian

Broker Associate

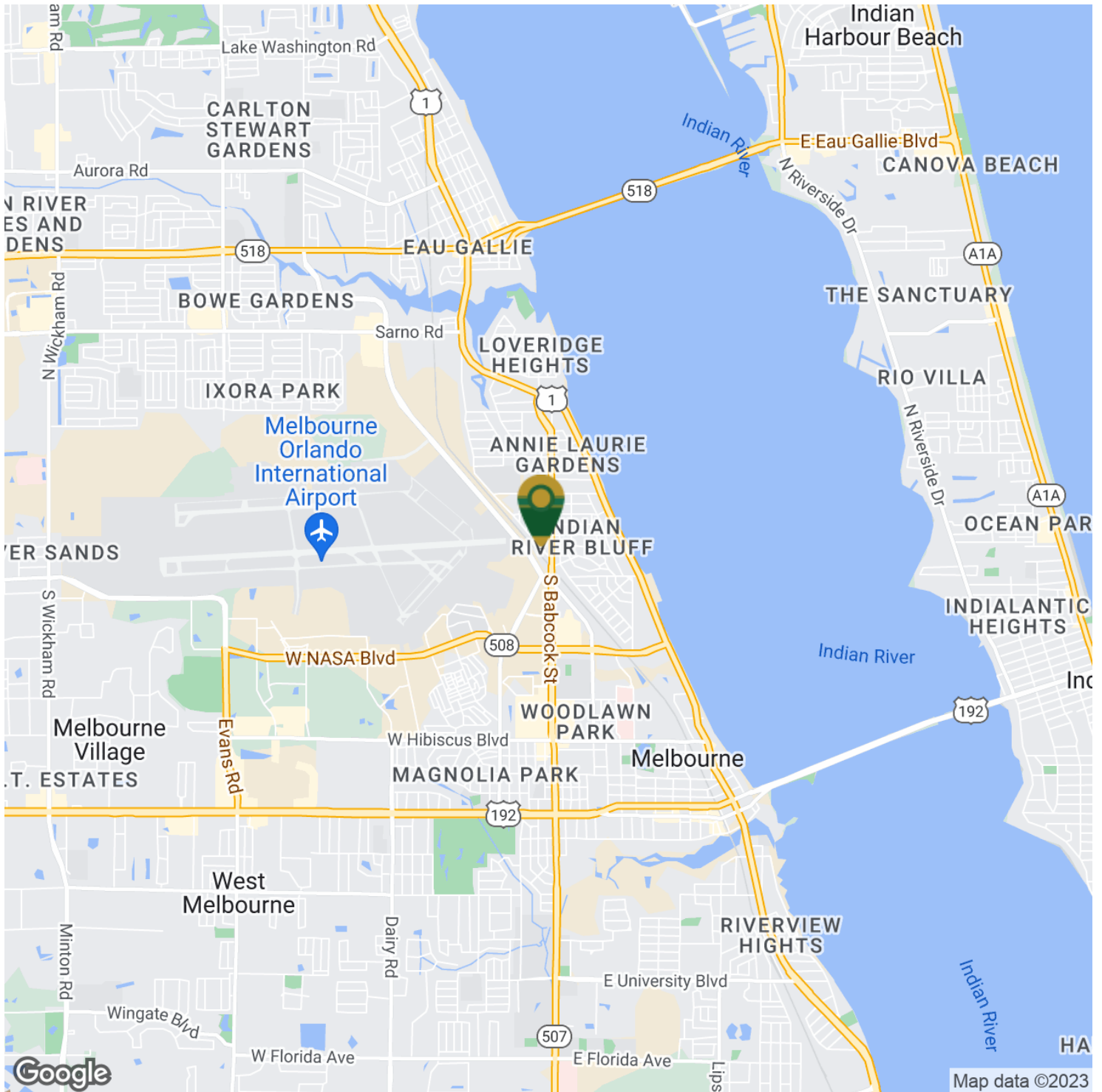
Cell: 321.750.3439

zach@ullianrealty.com

Stand-Alone Commercial Building In Heart Of Melbourne

420 S. Babcock Street, Melbourne, FL 32901

Location Map



Zachary Ullian

Broker Associate

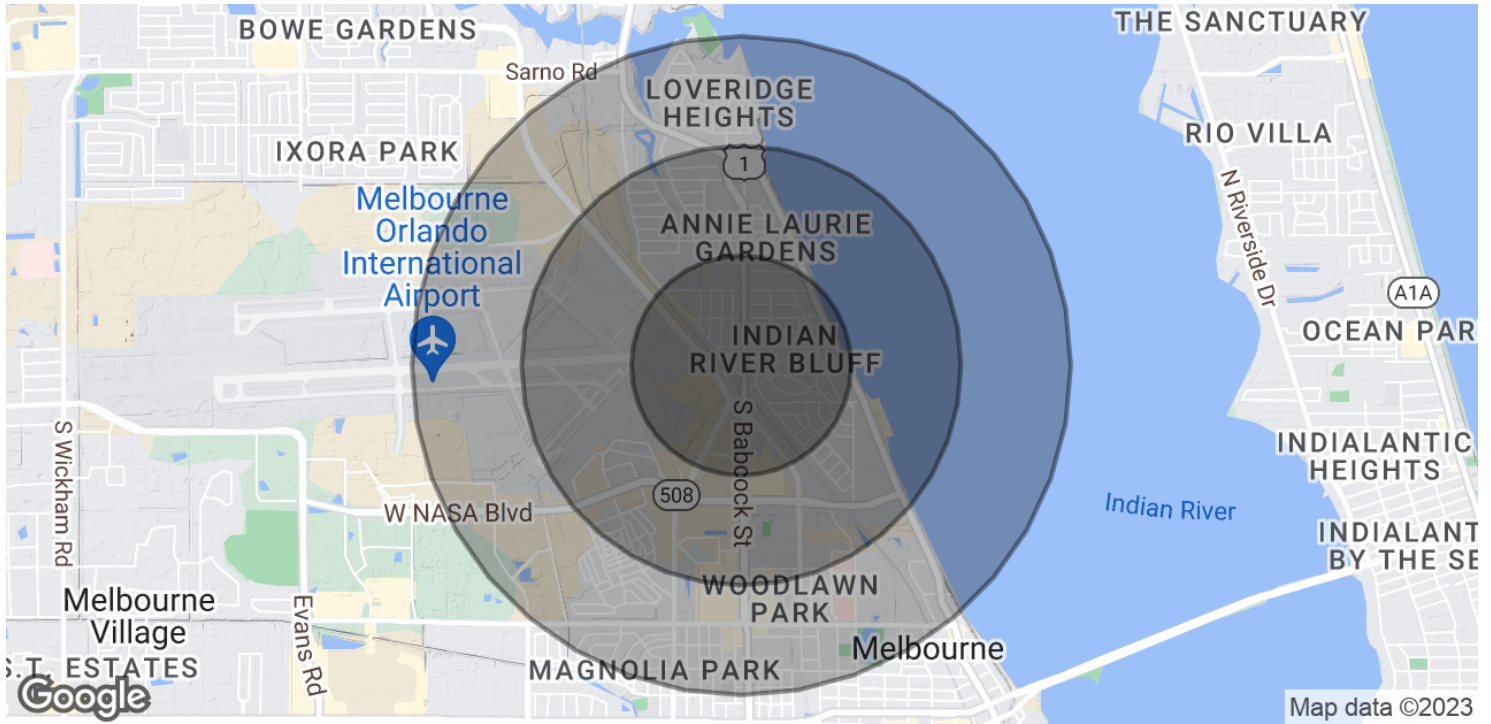
Cell: 321.750.3439

zach@ullianrealty.com

Stand-Alone Commercial Building In Heart Of Melbourne

420 S. Babcock Street, Melbourne, FL 32901

Demographics Map & Report



POPULATION	0.5 MILES	1 MILE	1.5 MILES
Total Population	1,275	2,772	6,320
Average Age	43.3	38.4	39.8
Average Age (Male)	43.3	38.1	39.4
Average Age (Female)	42.6	41.2	43.0
HOUSEHOLDS & INCOME	0.5 MILES	1 MILE	1.5 MILES
Total Households	445	1,131	3,098
# of Persons per HH	2.9	2.5	2.0
Average HH Income	\$63,776	\$55,479	\$52,261
Average House Value	\$156,713	\$131,670	\$147,855

* Demographic data derived from 2020 ACS - US Census

Zachary Ullian

Broker Associate
 Cell: 321.750.3439
 zach@ullianrealty.com