

~~VOL 7242 PG 911~~

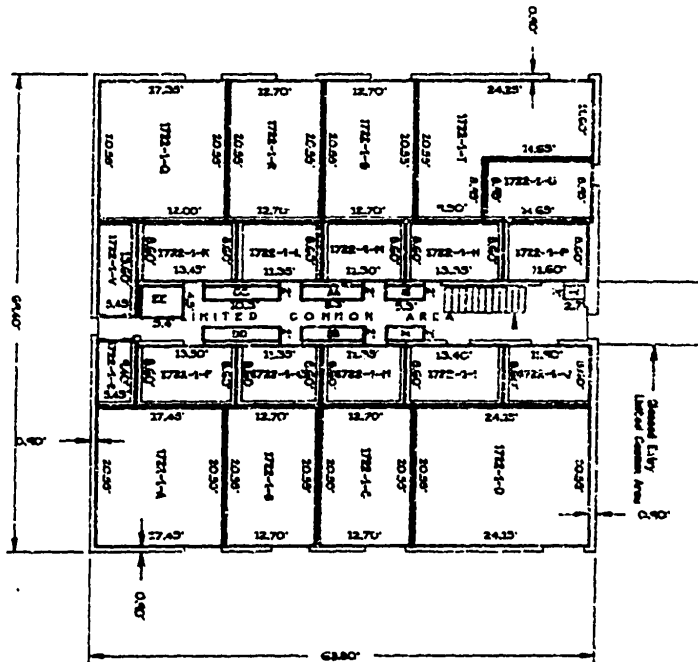
OFFICIAL RECORDS

BR 1402160496

Exhibit F-8
To Declaration of Condominium

Use Commercial Office Building
Prohibit, Common Areas and Units are to
Remain a Declaration of Condominium for
Residential Office Building

Foxwood Center Condominium
Building 1722
Clay County, Florida



First Floor Plan
Scale 1" = 20'

[Handwritten Signature]
 J.P. & Associates, Inc.
 Professional Land Surveyors
 400 South Main Street, Suite 100
 Tallahassee, Florida 32301
 Phone: 904-271-2000
 Fax: 904-271-2000