




Walgreens

LUMBER & HARDWARE  
NATIONAL

 **JLL** SEE A BRIGHTER WAY

# For sale

Commercial Development  
Opportunity in Arecibo  
~2,000 SM Land

[property.jll.com/en-pr](https://property.jll.com/en-pr)

## About the site

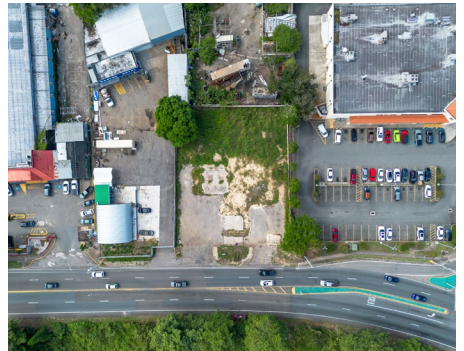
Great opportunity to acquire a prime plot of commercial development land, ideally located in PR-10 in Arecibo. Spanning an area of 2,000 square meters, this asset provides an excellent investment potential for a company seeking to expand its portfolio or a developer yearning for their next project. The lot is adjacent to Walgreens and benefits from a high foot and car traffic.

PROPERTY SUMMARY	
<b>ADDRESS</b>	PR-10 Arecibo, PR 00612
<b>LOCATION</b>	<a href="#">18.462097963877913, -66.72167240656137</a>
<b>PROPERTY TYPE</b>	Land
<b>LOT SIZE</b>	2,000 SM
<b>PARCEL NUMBER</b>	030-015-337-04
<b>ZONING</b>	I
<b>FLOOD ZONE</b>	AE

## Aerial



# Gallery



## Location highlights

The site is within a 1-mile radius of Galería Pacífico, Arecibo Plaza, Pavia Hospital, Marshall's, and others. Arecibo is also home to a multitude of attractions for both locals and tourists, including beaches, the Arecibo Lighthouse and Historical Park, Cambalache State Forest, Dos Bocas Lake, Casa Ulanga, La Poza del Obispo beach, Plaza del Atlantico Shopping Center, among many others.

Demographics	1-mile	3-mile	5-mile
Population	8,332	34,843	67,714
Households	3,746	15,031	\$17,811
Median HH Income	\$10,000	\$17,811	\$20,196

Source: Esri, 2021



**Tom Provost**  
 Transaction Advisor - Lic. # C-22607  
 Puerto Rico  
 +1 787-221-6660  
[tom.provost@jll.com](mailto:tom.provost@jll.com)

*Exclusively listed by:*  
 JLL Puerto Rico Realty & Co., S. En C.  
 License Number: E-297  
 +1 787 777 5800  
 27 González Giusti Street Suite 101,  
 Guaynabo PR 00968  
[www.us.jll.com/puerto-rico](http://www.us.jll.com/puerto-rico)

Although information has been obtained from sources deemed reliable, JLL does not make any guarantees, warranties or representations, express or implied, as to the completeness or accuracy as to the information contained herein. Any projections, opinions, assumptions or estimates used are for example only. There may be differences between projected and actual results, and those differences may be material. JLL does not accept any liability for any loss or damage suffered by any party resulting from reliance on this information. If the recipient of this information has signed a confidentiality agreement with JLL regarding this matter, this information is subject to the terms of that agreement. ©2023. Jones Lang LaSalle IP, Inc. All rights reserved.