 **JLL** SEE A BRIGHTER WAY

For lease

Commercial Land
Parcel in Arecibo
~2,000 SM Land

property.jll.com/en-pr

About the site

Great opportunity to lease a prime commercial land parcel on PR-10 in Arecibo right in between Walgreens and National Lumber. The parcel has 2,000 SM and is located within a minute from Highway 22.

PROPERTY SUMMARY

ADDRESS	PR-10 Arecibo, PR 00612
LOCATION	18.462097963877913, -66.72167240656137
PROPERTY TYPE	Land
LOT SIZE	2,000 SM
PARCEL NUMBER	030-015-337-04
ZONING	I
FLOOD ZONE	AE

Aerial



Gallery

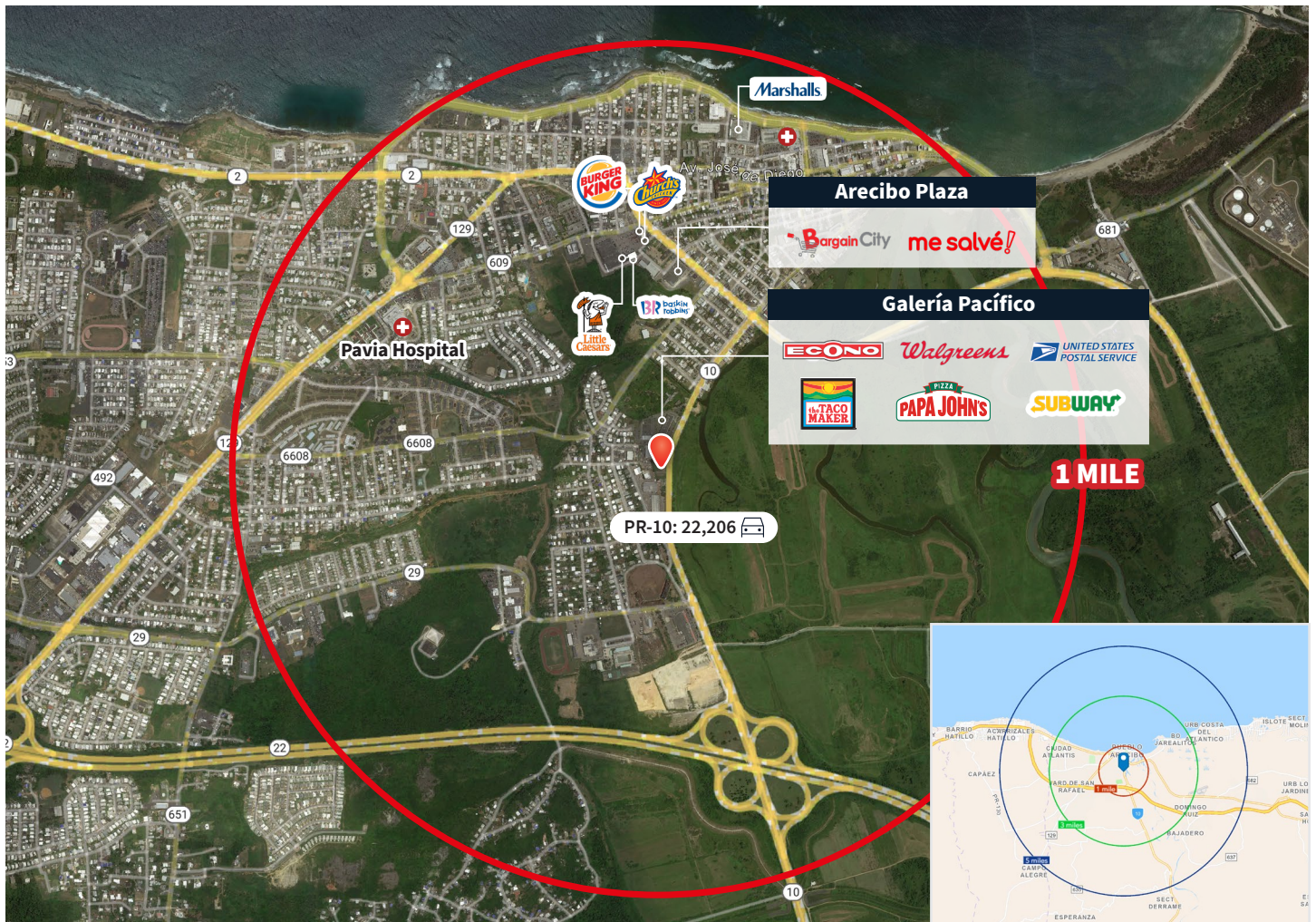


Location highlights

The site is within a 1-mile radius of Galería Pacífico, Arecibo Plaza, Pavia Hospital, Marshall's, and others. Arecibo is also home to a multitude of attractions for both locals and tourists, including beaches, the Arecibo Lighthouse and Historical Park, Cambalache State Forest, Dos Bocas Lake, Casa Ulanga, La Poza del Obispo beach, Plaza del Atlantico Shopping Center, among many others.

Demographics	1-mile	3-mile	5-mile
Population	8,332	34,843	67,714
Households	3,746	15,031	\$17,811
Median HH Income	\$10,000	\$17,811	\$20,196

Source: Esri, 2021



Tom Provost
 Transaction Advisor - Lic. # C-22607
 Puerto Rico
 +1 787-221-6660
tom.provost@jll.com

Exclusively listed by:
 JLL Puerto Rico Realty & Co., S. En C.
 License Number: E-297
 +1 787 777 5800
 27 González Giusti Street Suite 101,
 Guaynabo PR 00968
www.us.jll.com/puerto-rico

Although information has been obtained from sources deemed reliable, JLL does not make any guarantees, warranties or representations, express or implied, as to the completeness or accuracy as to the information contained herein. Any projections, opinions, assumptions or estimates used are for example only. There may be differences between projected and actual results, and those differences may be material. JLL does not accept any liability for any loss or damage suffered by any party resulting from reliance on this information. If the recipient of this information has signed a confidentiality agreement with JLL regarding this matter, this information is subject to the terms of that agreement. ©2023. Jones Lang LaSalle IP, Inc. All rights reserved.