



Commercial Real Estate Services DRE Lic. 02202718

**INDUSTRIAL WAREHOUSE
WITH OFFICE
\$2,900 per Month**

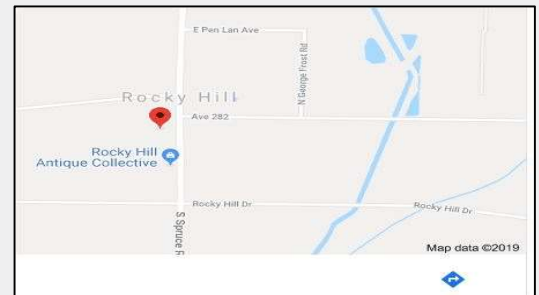
FOR LEASE



**553 NORTH SPRUCE ROAD
Exeter, Tulare County, CA**

Property Features

- 1 Acre (approx.) Site.
- 5,967 Sq. Ft. (approx.) Warehouse.
- Includes 853 Sq. Ft. Office with Reception Area, Kitchen, Drafting Room, Ceiling Fans, Oak Cabinets.
- Very Clean Restroom.
- Warehouse has two 10' x 10' roll-up doors.
- Zoning: M-1.
- Built in 1933.



For more information contact:

Bill Whitlatch,
GRI, RE Master's™, CCIM
Real Estate Broker
DRE License #00874715
559-679-6611
bill@whitlatch.net

(see reverse side for more pictures)



NO WARRANTY OR REPRESENTATION, EXPRESS OR IMPLIED, IS MADE AS TO THE ACCURACY OF THE INFORMATION CONTAINED HEREIN, AND THE SAME IS SUBMITTED SUBJECT TO ERRORS, OMISSIONS, CHANGE OF PRICE, RENTAL OR OTHER CONDITIONS, PRIOR SALE, LEASE OR FINANCING, OR WITHDRAWAL WITHOUT NOTICE, AND OF ANY SPECIAL LISTING CONDITIONS IMPOSED BY OUR PRINCIPALS. NO WARRANTIES OR REPRESENTATIONS ARE MADE AS TO THE CONDITION OF THE PROPERTY OR ANY HAZARDOUS CONTAINED THEREIN ARE ANY TO BE IMPLIED.

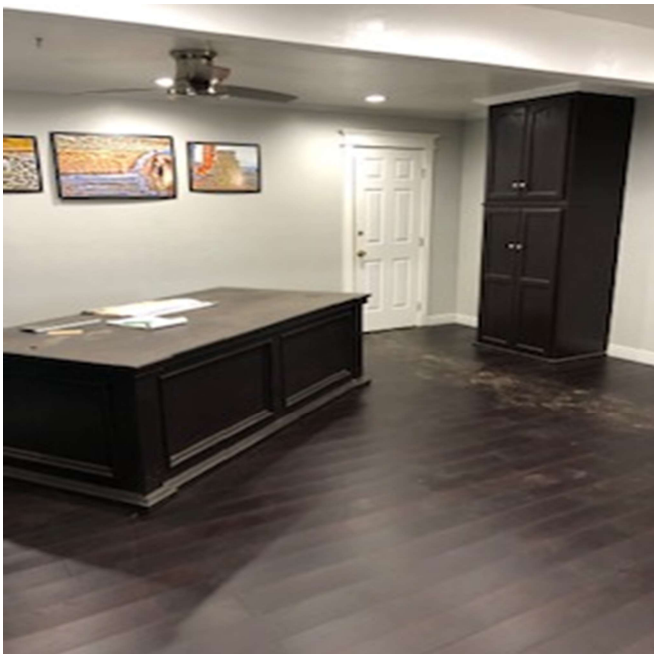




Commercial Real Estate Services DRE Lic. 02202718

For more information contact:

Bill Whitlatch,
GRI, RE Masters™, CCIM
Real Estate Broker
DRE License #00874715
559-679-6611
bill@whitlatch.net



525 W. Center Ave.
Suite D
Visalia, CA 93291

Commercial Real Estate Services DRE Lic. 02202718

NO WARRANTY OR REPRESENTATION, EXPRESS OR IMPLIED, IS MADE AS TO THE ACCURACY OF THE INFORMATION CONTAINED HEREIN, AND THE SAME IS SUBMITTED SUBJECT TO ERRORS, OMISSIONS, CHANGE OF PRICE, RENTAL OR OTHER CONDITIONS, PRIOR SALE, LEASE OR FINANCING, OR WITHDRAWAL, WITHOUT NOTICE, AND OF ANY SPECIAL LISTING CONDITIONS IMPOSED BY OUR PRINCIPALS. NO WARRANTIES OR REPRESENTATIONS ARE MADE AS TO THE CONDITION OF THE PROPERTY OR ANY HAZARDS CONTAINED THEREIN ARE ANY TO BE IMPLIED.

