

For Sale: Industrial Warehouse/Distribution

4141 Corporate Court

Palm Harbor, FL 34683



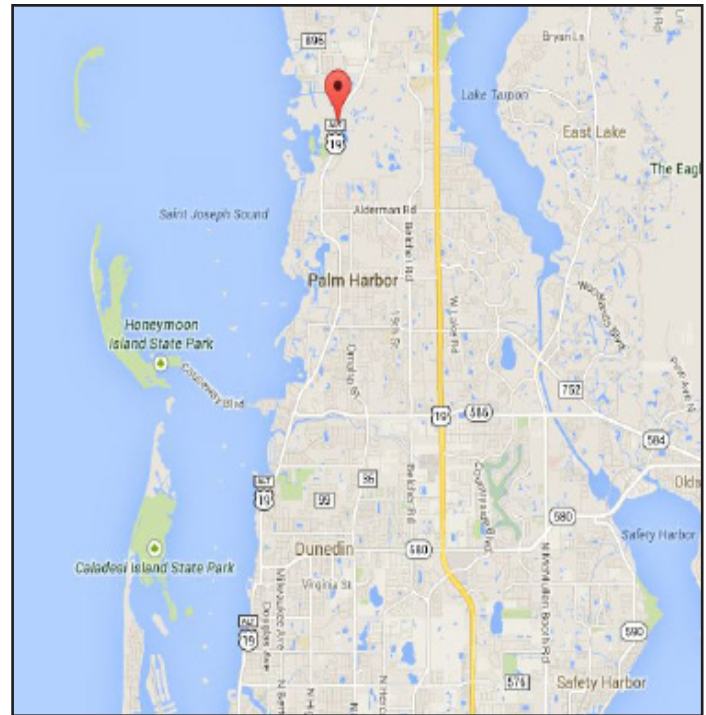
FEATURES

- 4,500SF of Industrial / Warehouse Distribution Building
- 0.9014 acre site (39,265 SF)
- Zoning: 4800 (General Warehouse)
- 1,012SF of Office; 3,488SF of Warehouse space with 14'-20' ceilings
- 3 Phase Electric, 600 Amp, 240 V
- Four 12' x 16' Overhead Doors
- Parking: Approximately 12 lined spaces, with the capacity to park 12-15 additional cars/trucks in the overflow parking lot on-site
- Located in heart of Palm Harbor off Alt 19, North of Alderman
- 2013 Real Estate Tax: \$6,493
- COME LOOK! MAKE an OFFER Today

ASKING PRICE:

\$295,000

LOCATION MAP



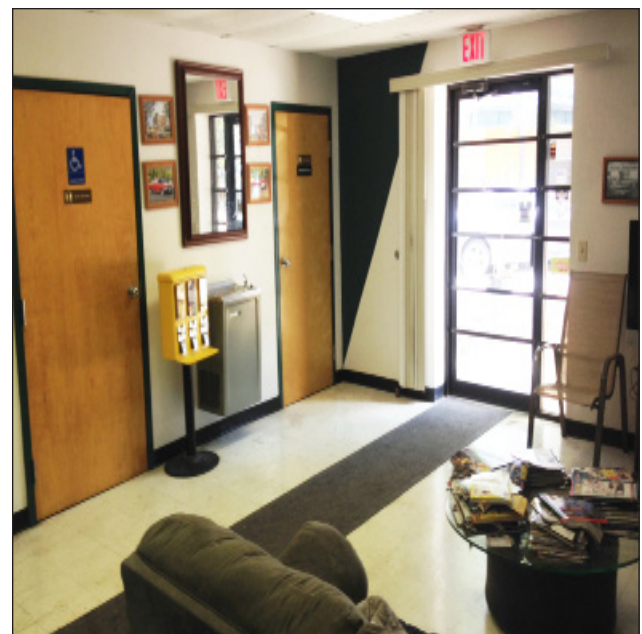
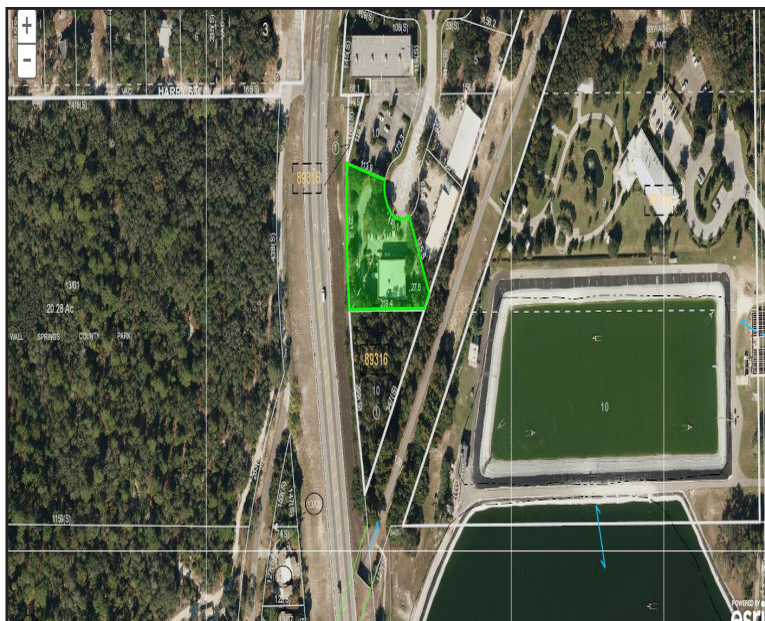
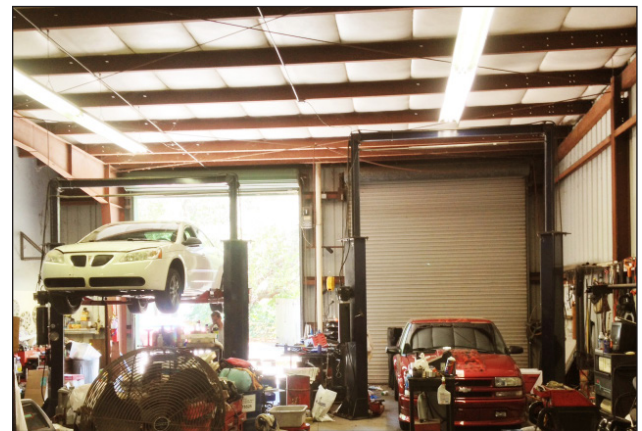
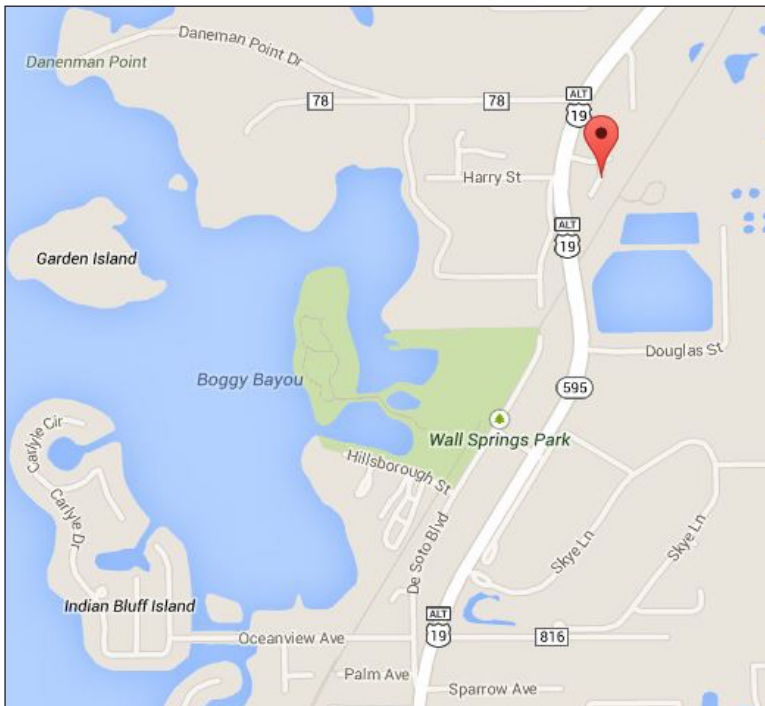
Elliott M. Ross, CCIM
O: 727.725.2800
C: 727.639.3800
eross@rmcrr.com

Bryan B. Lauer, LEED AP
O: 727.725.2800
C: 813.363.0861
blauer@rmcrr.com

RMC ROSS REALTY
4401 W Kennedy Blvd, Suite 100
Tampa, FL 33609
727.725.2800

4141 CORPORATE COURT

Palm Harbor, FL 34683



Local Drive Times & Distances		
To:	Distance	Drive Time
Tampa Int'l Airport	23 miles	30 minutes
I-275	23 miles	30 minutes
Downtown St. Petersburg	28 miles	35 minutes
Downtown Tampa	26.4 miles	40 minutes

Any information given herein is obtained from sources considered reliable. However, we are not responsible for misstatement of facts, errors, omissions, prior sale, withdrawal from market, modification of mortgage commitment, terms and considerations, or change in price without notice. The information supplied herein is for informational purposes only and shall not contain a warranty or assurance that said information is correct. Any person intending to rely upon the information supplied herein should verify said information independently.