

1190 E. Church Street, Bartow FL 33830
For Sale: Medical Office

DETAILS

- **4,400 SF; Modified Gross**
- **Primary Care Tenant with Long Term Lease.**
- **Parking: 20 Spaces with 1 ADA space (4/1000)**
- **Lease Rate: \$16.75 NNN**
- **Purchase Price: \$1,275,000**



DISCLAIMER: Information contained herein is from sources deemed reliable, but not verified and no warranty is made as to the accuracy thereof. This offering is made subject to errors, omissions, change of price or other conditions, prior sale or lease or withdrawal without notice. Prospective buyers/tenants are encouraged to verify, independently, all pertinent data. The Mahoney Group, Inc. 3825 S. Florida Avenue, Suite 5, Lakeland, Florida 33813 is the agent of and represents the Owner/Landlord of this property.

Will Daniel

FL, Broker- Associate
863-619-6740

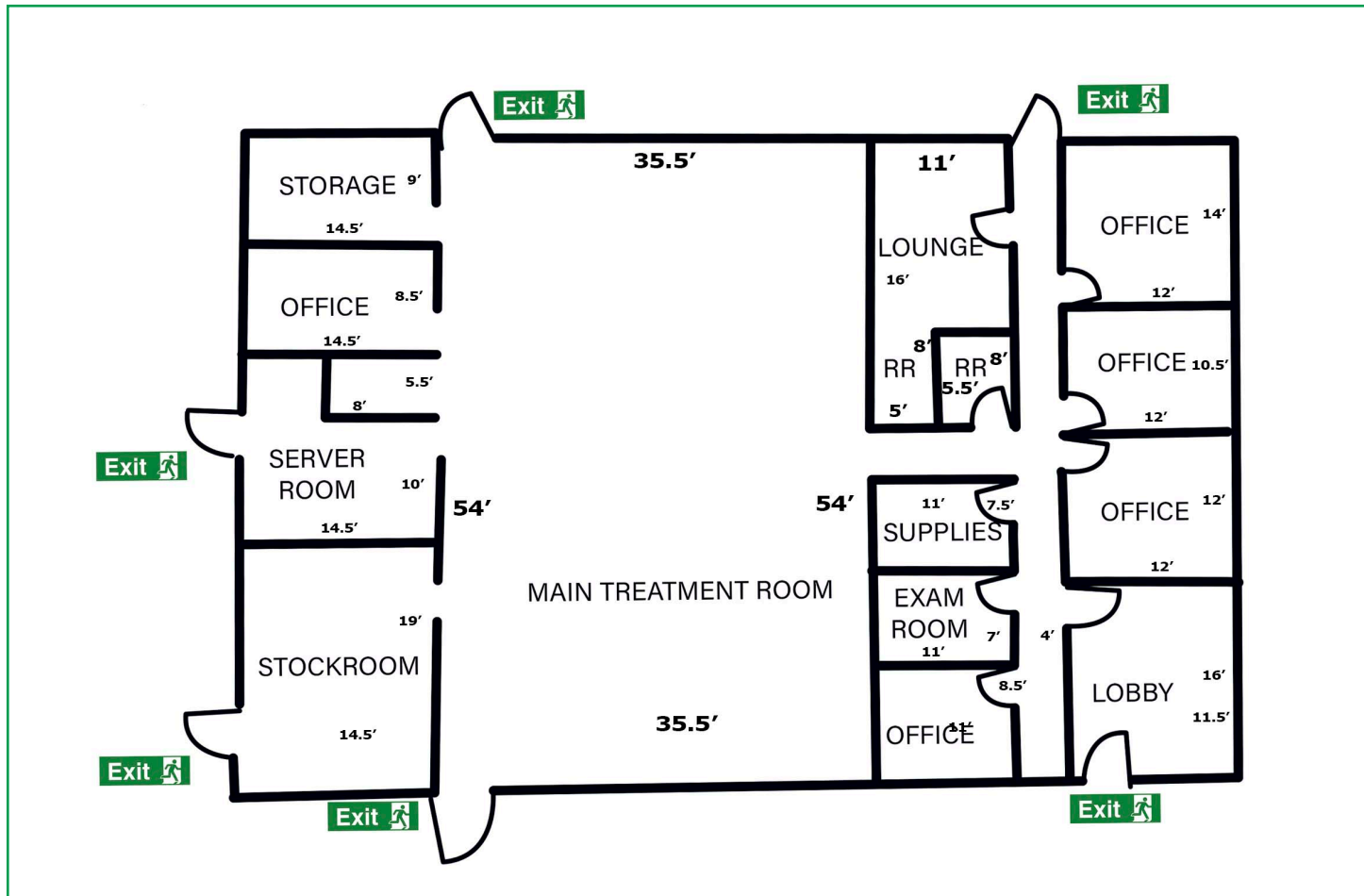
will@mahoneygroupinc.com

3825 South Florida Avenue, Suite 5
Lakeland, Florida 33813
Phone: 863-619-6740
www.mahoneygroupinc.com

Single Tenant Medical Investment

PROPERTY ADDRESS	1190 E. Church Street, Bartow, FL 33830
PROPERTY LOCATION	Corner of Church Street and Hobart Avenue, 2 blocks West of US HWY 17, 1 block South of Van Fleet Drive, 2 blocks North of Main Street.
BUILDING SIZE	±4,400 Square Feet on 0.60 Acre
AVAILABLE SPACE	100% Leased by Single Tenant Medical practice
FEATURES	New flooring and interior paint 2020. New roof and parking lot asphalt, exterior paint 2021. Layout includes reception lobby, 2,000 SF of open floor area, multiple Offices, conference room, break area, 2 ADA restrooms.
LEASE RATE	Pro-Forma can be reviewed with executed NDA
OPERATING EXPENSES	Modified Gross
ZONING/ LAND USE	C-2 Community zoning and R-3. Medical use.
UTILITIES	City of Bartow, water, sewer, electric.
PARKING	20 spaces with 1 ADA space (4/1000)
COMMENTS	Corner lot with ample parking. Less than 1.5 Miles from Bartow Regional Medical Center.
OTHER	Tenant will be conducting further improvements.
Contact:	Will Daniel, Broker-Associate: 813-695-7371

1190 East Church Street, Bartow, FL. 33830
Floor Plan



1190 East Church Street, Bartow, FL. 33830
For Sale: Single Tenant Medical Investment



1190 East Church Street, Bartow, FL. 33830
For Sale: Single Tenant Medical Investment



1190 East Church Street, Bartow, FL. 33830
For Sale: Single Tenant Medical Investment



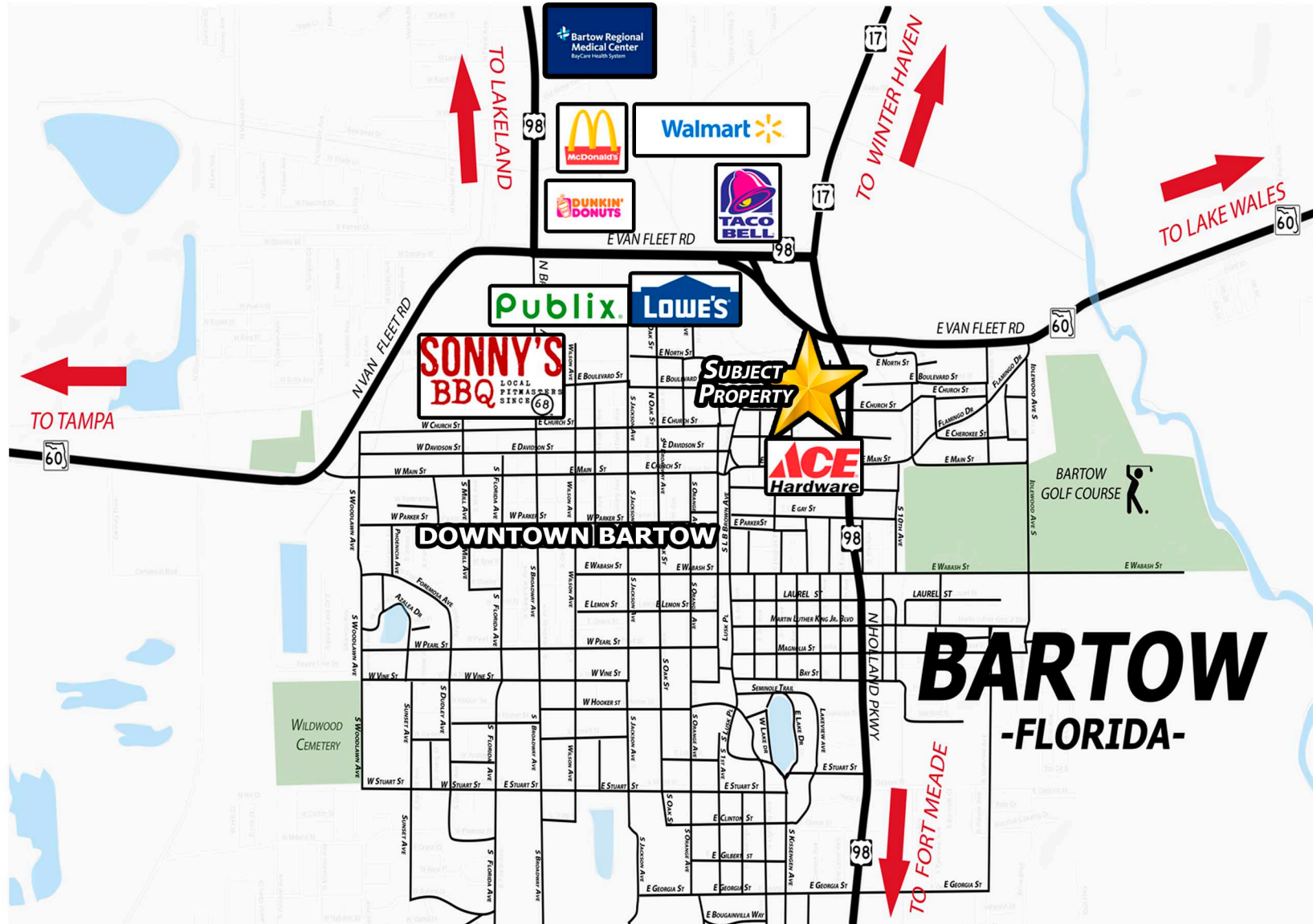
1190 East Church Street, Bartow, FL. 33830



1190 East Church Street, Bartow, FL. 33830
For Sale: Single Tenant Medical Investment



1190 East Church Street, Bartow, FL. 33830

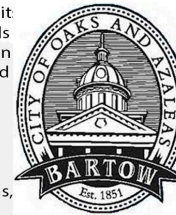


6606 South Florida Avenue, Lakeland, FL 33813
For Sale: Rare Waterfront Commercial Parcel

BARTOW, FLORIDA - County Seat of Polk County -

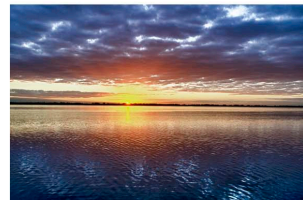
Location, location, location. Bartow is just seven miles south of the Polk Parkway, with its direct connection to Interstate 4. State Road 60, Florida's Coast to Coast Highway, travels directly through Bartow connecting Florida's Gulf and Atlantic coasts. The transportation system provides a conduit to all markets in the state and beyond. The availability of land continues to drive residential, commercial and industrial development. In addition, Polk County has more rail than any other location in Florida.

Bartow is located within one of the highest growth metro markets in the southeast United States and one of the most attractive areas in which to operate a business. With an available labor force backed by numerous training programs, the area provides the precision, technical and service skills a company may require.



The Bartow Municipal Golf Course at 150 North Idlewood is open to the public. Home to the Florida Sheriffs Youth Villa Classic, one of Central Florida's top amateur tournaments, the 175-acre 18-hole course offers a driving range and practice putting green. The par 72, 6,300-yard course also offers an enclosed pavilion with barbecue pit, a pro shop and the popular Mulligan's Restaurant.

Polk County Historical Museum: Part of Bartow's charm is its position as the history center for a county steeped in a rich, unique and awe-inspiring past. The Polk County History Center is located in one of Florida's most iconic historic courthouses. There, you will experience Florida's heritage from Native American life to Cracker culture. Highlights include a completely restored 1908 courtroom, along with exhibits on cattle ranching, citrus and phosphate mining.



Fishing and Boating

Polk County is known as Central Florida's Lakes Country. Those who like to fish, boat and canoe have access to more than 550 freshwater lakes and numerous rivers and streams throughout Polk County. Large-mouth bass, speckled perch, catfish, shellcrackers and bream abound. Central Florida's aquatic recreation ranges from bamboo pole fishing to airboating.