

1692 S Eastwood Dr  
Woodstock, IL 60098

For Lease

MLS #11934893

INDUSTRIAL



INDUSTRIAL STORAGE 3,605 SF

\$2,403.33/MO. \$8.00 PSF (GROSS)

**STORAGE SPACE**  
**3,605 SF**

**UNIT 1692:** 3,605 SF of storage space. 1,470 SF of cold storage with two 12x14 DID's, triple basin drains, 3 lockable storage rooms (750 SF) and adjacent 1,385 SF heated warehouse. Note: no bathrooms or office.

An additional 1,470 SF adjacent cold storage with dock could be available.

**Specifications**

Land Size:	1 Acre
Year Built:	1993
HVAC System:	GFA (1,385 SF)
Electrical:	200 amp
Sprinklers:	no
Washrooms:	0
Ceiling Height:	19 ft
Parking:	Common
DID's:	2- 12x14
Dock:	1 (occupied)
Sewer/Water:	City
Zoning:	B-3
CAM & Taxes:	Included
PIN #:	13-17-226-009

[CLICK HERE TO VIEW OUR WEBSITE](#)

No warranty or representation is made as to the accuracy of the foregoing information. Terms of sale or lease and availability are subject to change or withdrawal without notice. This document is for information purposes only. No offer of sub-agency is being made.



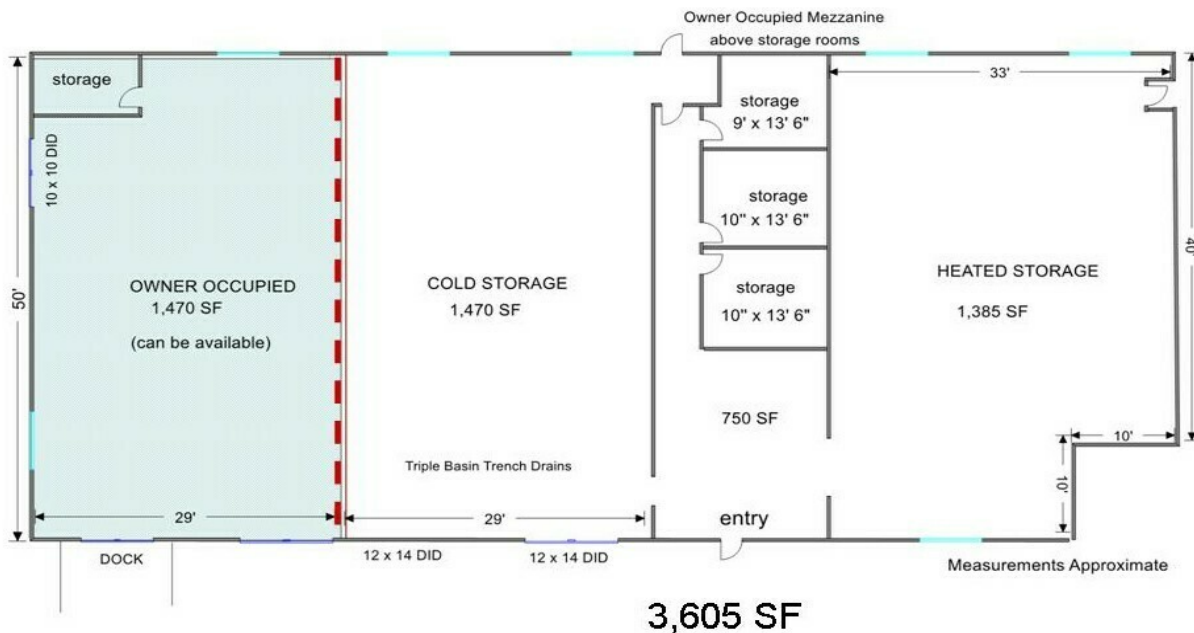
[www.PremierCommercialRealty.com](http://www.PremierCommercialRealty.com) | 847.854.2300 | 9225 S. Route 31, Lake in the Hills, IL 60156

VP / Designated Managing Broker  
**Heather Schweitzer**  
HeatherS@PremierCommercialRealty.com  
O: 847.854.2300 x15 C: 815.236.9816

1692 S Eastwood Dr  
Woodstock, IL 60098

For Lease

INDUSTRIAL



[CLICK HERE TO VIEW OUR WEBSITE](#)

No warranty or representation is made as to the accuracy of the foregoing information. Terms of sale or lease and availability are subject to change or withdrawal without notice. This document is for information purposes only. No offer of sub-agency is being made.



[www.PremierCommercialRealty.com](http://www.PremierCommercialRealty.com) | 847.854.2300 | 9225 S. Route 31, Lake in the Hills, IL 60156

VP / Designated Managing Broker  
**Heather Schweitzer**  
HeatherS@PremierCommercialRealty.com  
O: 847.854.2300 x15 C: 815.236.9816