

# OFFICE SUITES AT WEST WOODS COMPLEX

6810 NEW TAMPA HWY  
LAKELAND, FL 33815

---

**Lauren Smith, CCIM, CPM**

Senior Advisor

877.518.5263 x428 | 863.873.1970

[lauren.smith@svn.com](mailto:lauren.smith@svn.com)





**Publix**  
HV / LV WAREHOUSE

**Baker**  
Distributing Co.

**ACE**  
Hardware  
DISTRIBUTION

**amazon**  
fulfillment

**IKEA**  
DISTRIBUTION

**Plastipak**  
DISTRIBUTION

**Save**  
a Lot  
DISTRIBUTION

COUNTY LINE  
COMMERCE CENTER

**DHL**  
SUPPLY CHAIN

**Bldg 6790**

**Bldg 6810**

**Bldg 6830**

**Bldg 6850**

**Entrance**

**Entrance**

10,900  
Cars/Day

**New Tampa Hwy**

**Advance**  
**Auto Parts**  
DISTRIBUTION



# Property Summary



## OFFERING SUMMARY

<b>Lease Rate:</b>	<b>Negotiable</b>
<b>Estimated NNN:</b>	<b>\$4.00/SF</b>
Office Complex Size:	84,200 SF
Available SF:	1,600 - 9,130 SF
Year Built:	6810-50: 1999 6790: 2007
Parking:	379 ± Spaces
Traffic Count:	10,900 Cars per Day
PIN:	232819000000023070, 232819000000023040

## PROPERTY OVERVIEW

Office suites are available for lease within a well-maintained office complex nestled among large oak trees and comprised of four buildings. The property is easily accessible and has high visibility. With ample parking and quiet surroundings, it is a perfect place to work. Each suite in buildings 6810 and 6830 have their own entrance. Buildings 6850 and 6790 have common area lobbies with restrooms.

## LOCATION OVERVIEW

Conveniently located on the I-4 corridor between Tampa and Orlando, West Woods is the premier place to conduct business in the Central Florida area. Since Polk County is centrally located it has become one of the fastest-growing areas in the nation. At the Lakeland Airport, Amazon has planned to double its space and commercial flights are soon to follow. In addition, the trade area includes major national brands such as Publix, Ikea, and Advance Auto Parts. The local demographics allow for a wide range of potential employees to pull from for new hires.

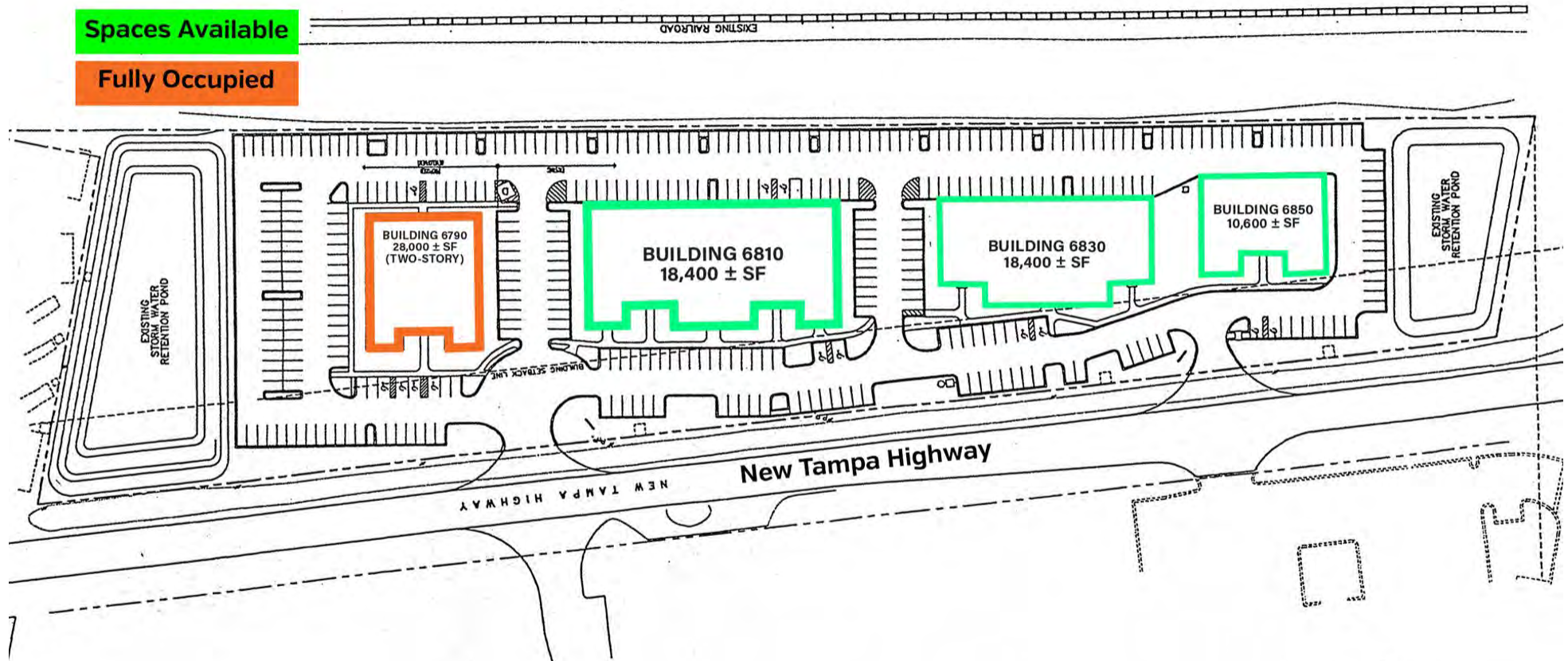
# West Woods Site Plan

## ARCHITECTURAL SITE PLAN



Spaces Available

Fully Occupied





# Lease Spaces

## LEASE INFORMATION

Lease Type: NNN Lease Term: Negotiable  
Total Space: 1,600 - 9,130 ± SF Lease Rate: Negotiable

## AVAILABLE SPACES

SUITE	TENANT	SIZE (SF)	MATTERPORT
Bldg 6810 - Suite 400/500 New Tampa Hwy	Available	8,323 SF	<a href="#">View Here</a>
Bldg 6810 - Suite 600 New Tampa Hwy	Available	5,277 SF	<a href="#">View Here</a>
Bldg 6850 - Suite 600 New Tampa Hwy	Available	2,446 SF	<a href="#">View Here</a>
Bldg 6850- Suite 200/300 New Tampa Hwy	Available	2,549 - 7,658 SF	<a href="#">View Here</a>
Bldg 6830 - Suite 100/200 New Tampa Hwy	Available	9,130 SF	<a href="#">View Here</a>



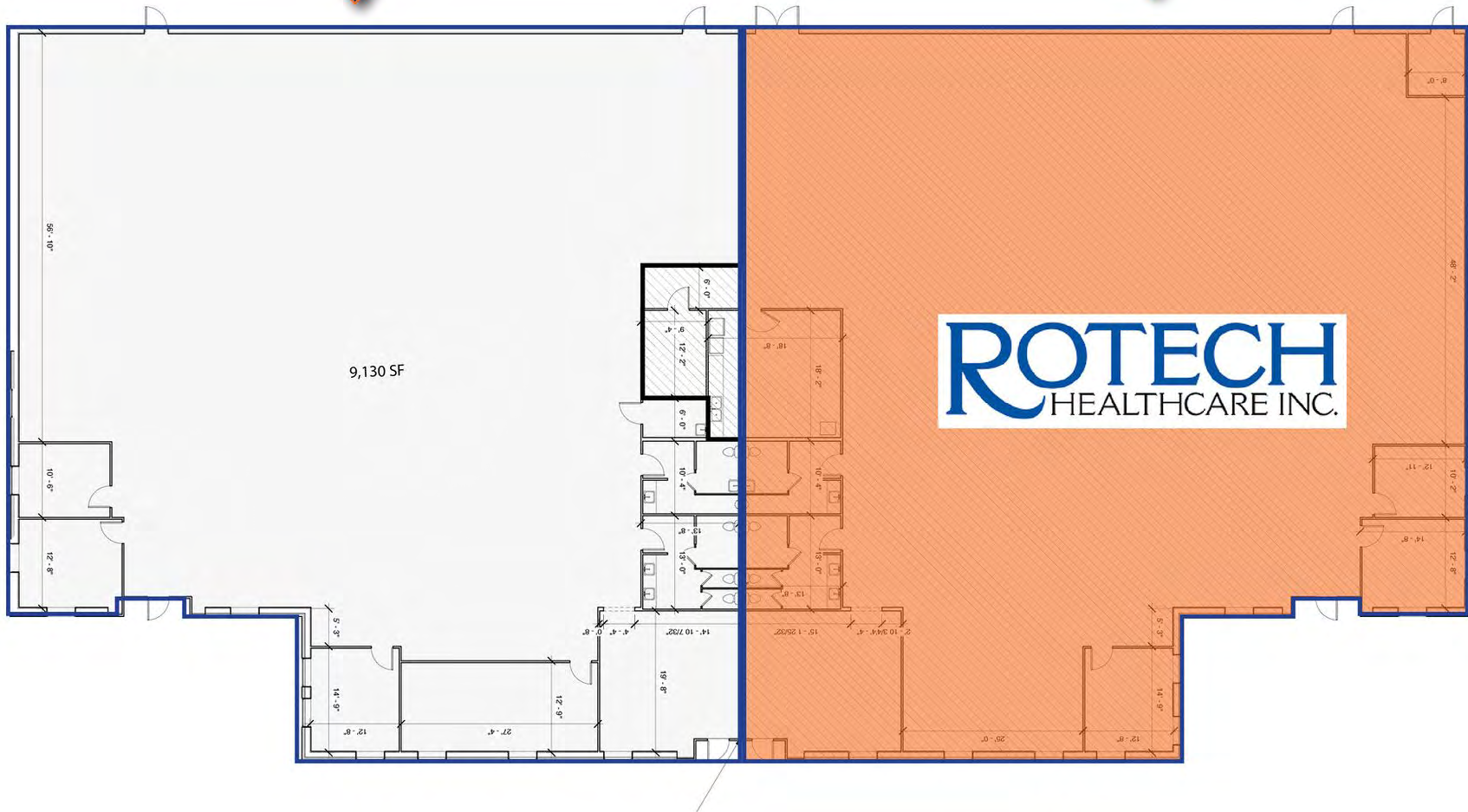


# Bldg. 6830 - Available Spaces

**Suite 100/200**  
**9,130 ± SF**

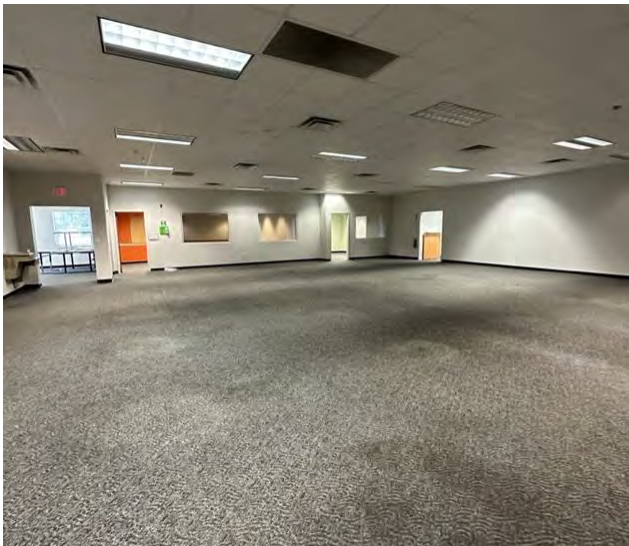


**Suite 300/400**  
**9,690 ± SF**



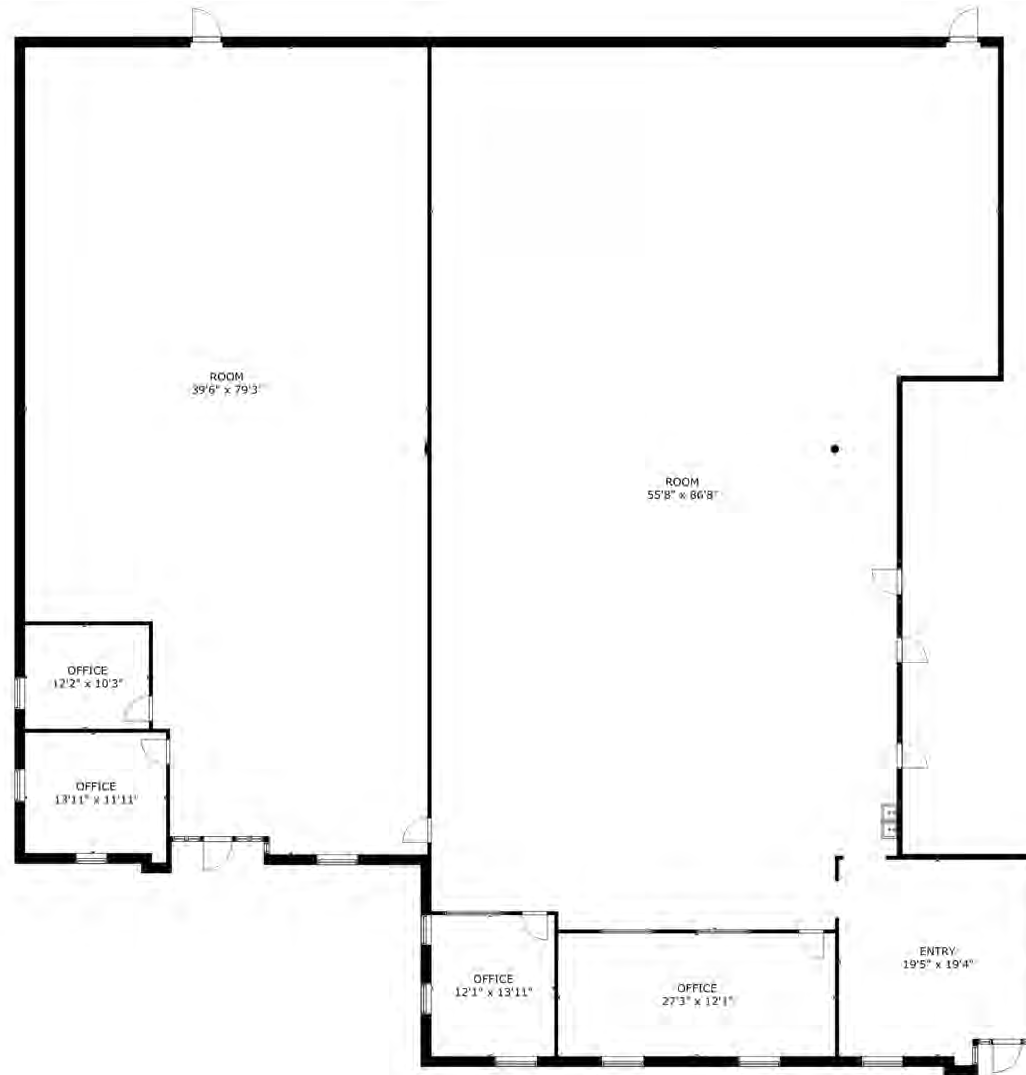


# Bldg. 6830 - Suite 100/200 Photos





# Bldg. 6830 - Suite 100/200 Floor Plan

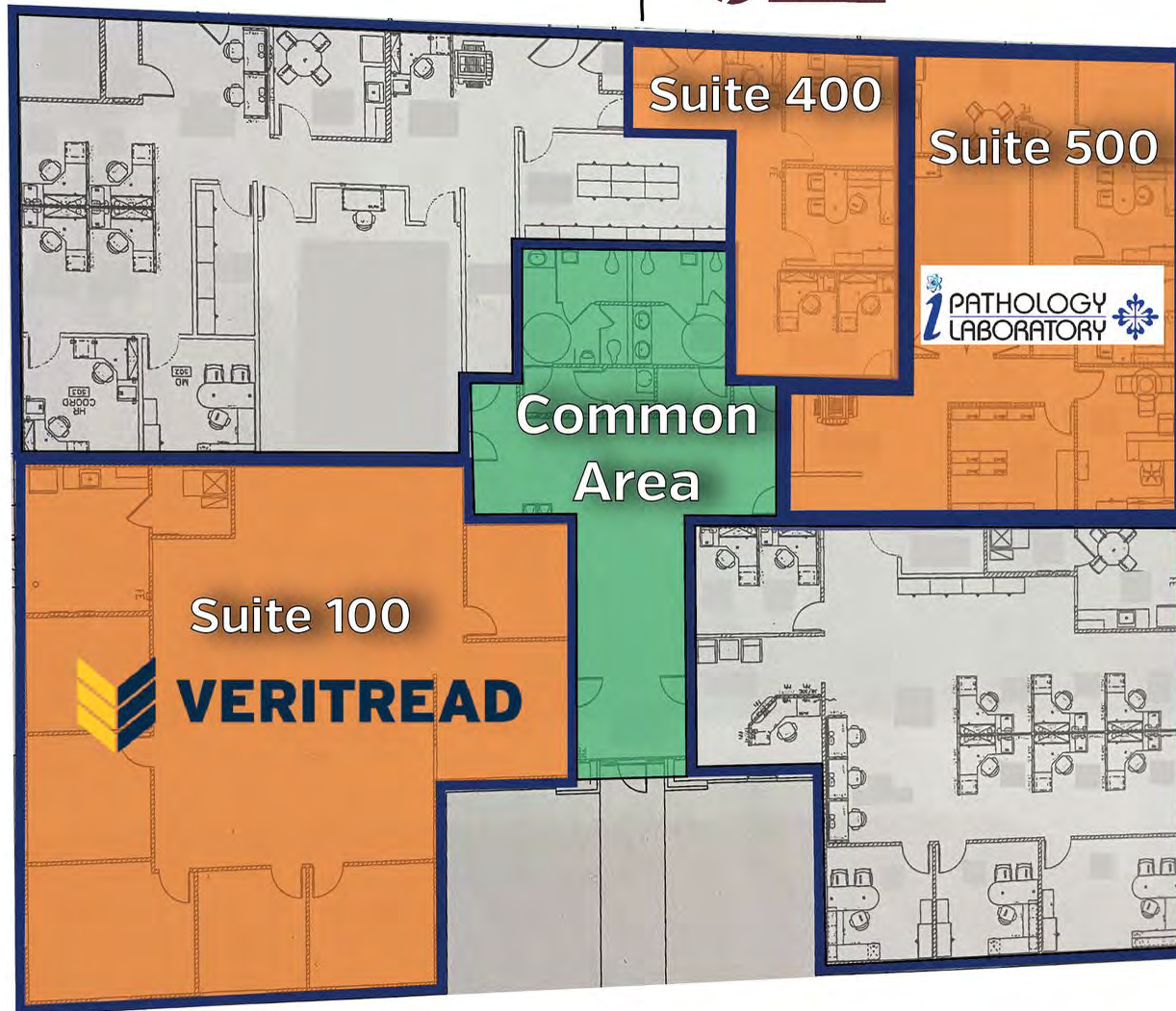




# Bldg. 6850 - Available Spaces



**Suite  
200/300  
2,549 ± SF**

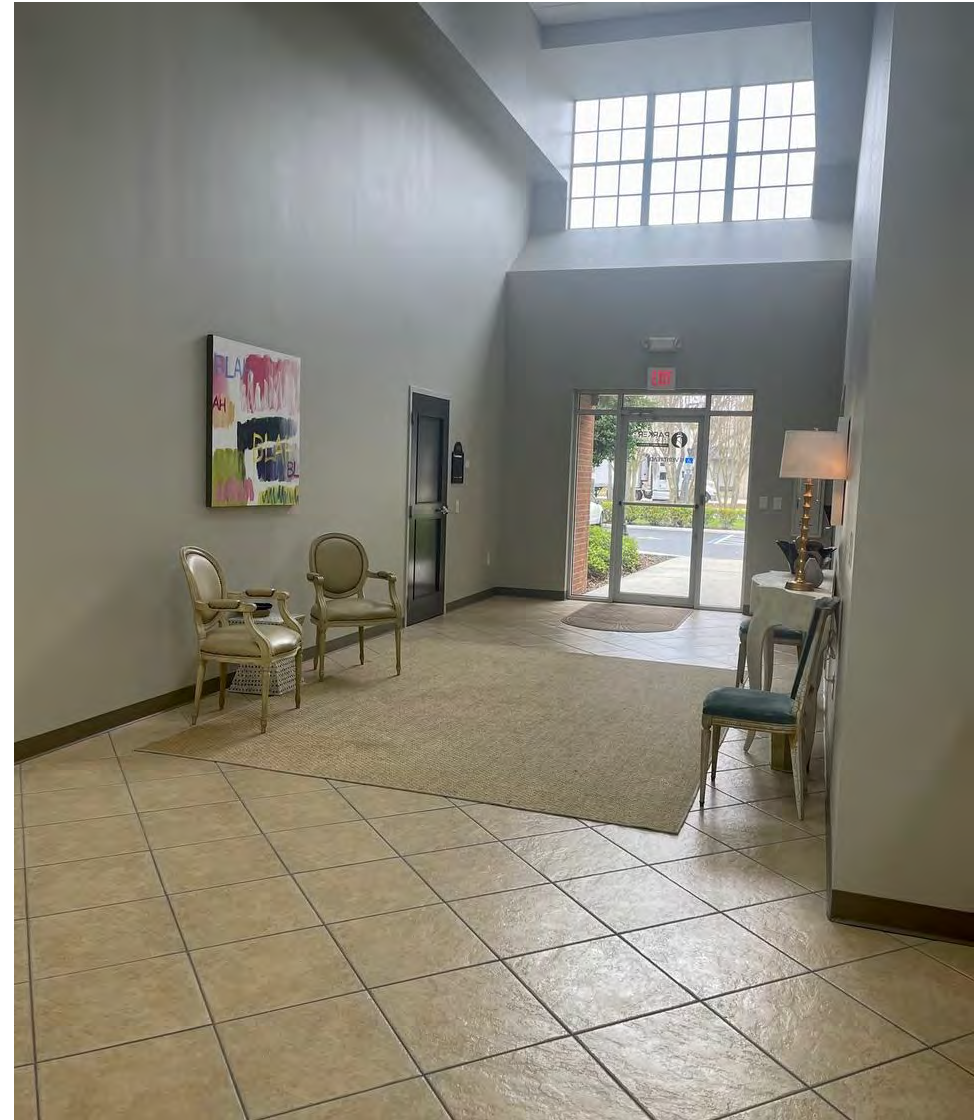


**Suite 600  
2,400 ± SF**



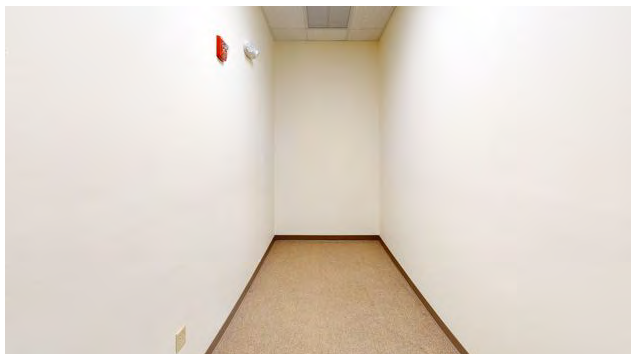


# Bldg 6850 - Lobby Photos



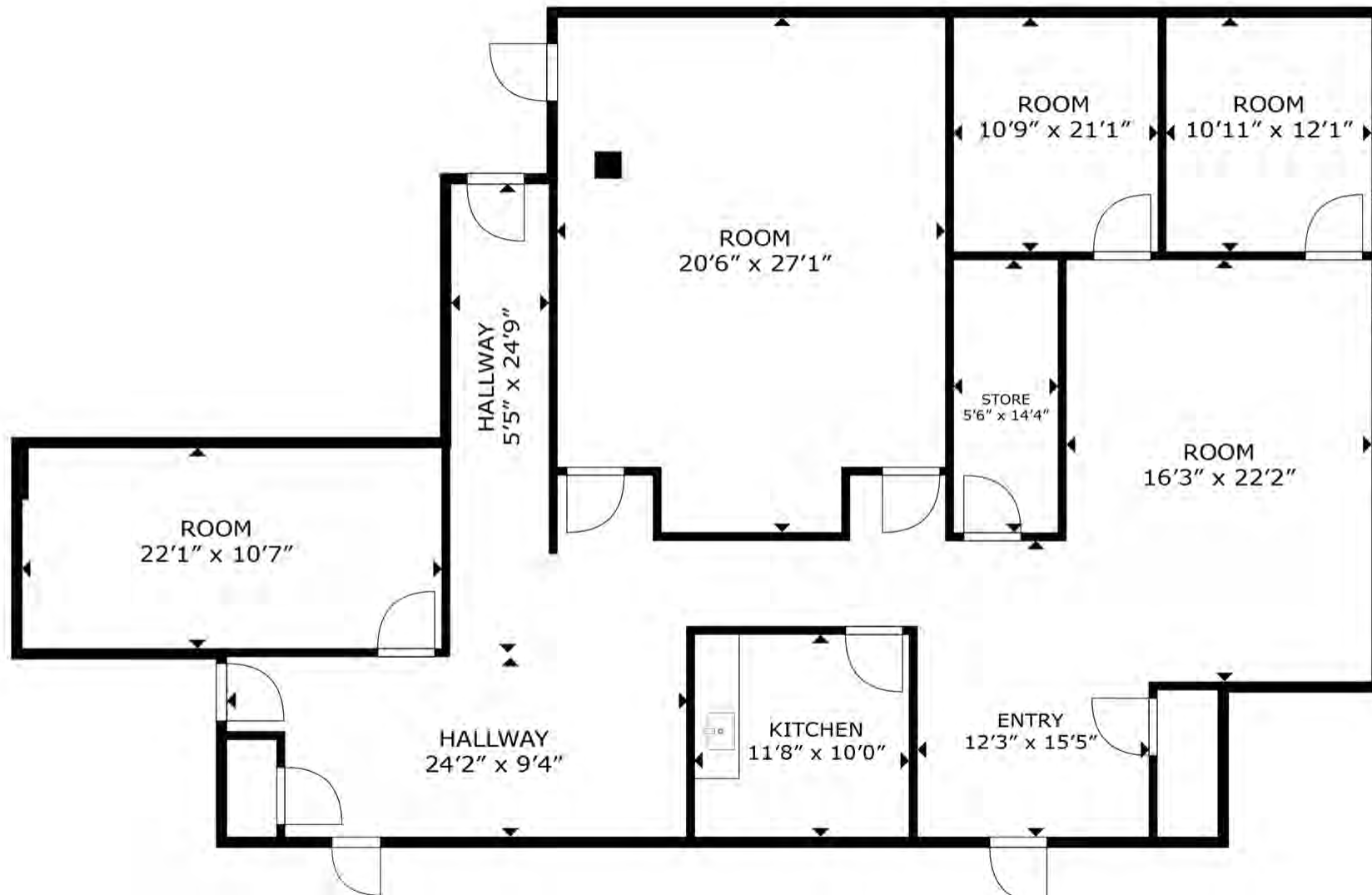


# Bldg 6850 - Suite 200/300





# Bldg 6850 - Suite 200/300 Floor Plan





# Bldg 6850 - Suite 600





# Bldg 6850 - Suite 600 Floor Plan





# Bldg. 6810 - Available Spaces

**Suite 100**  
4,740 ± SF



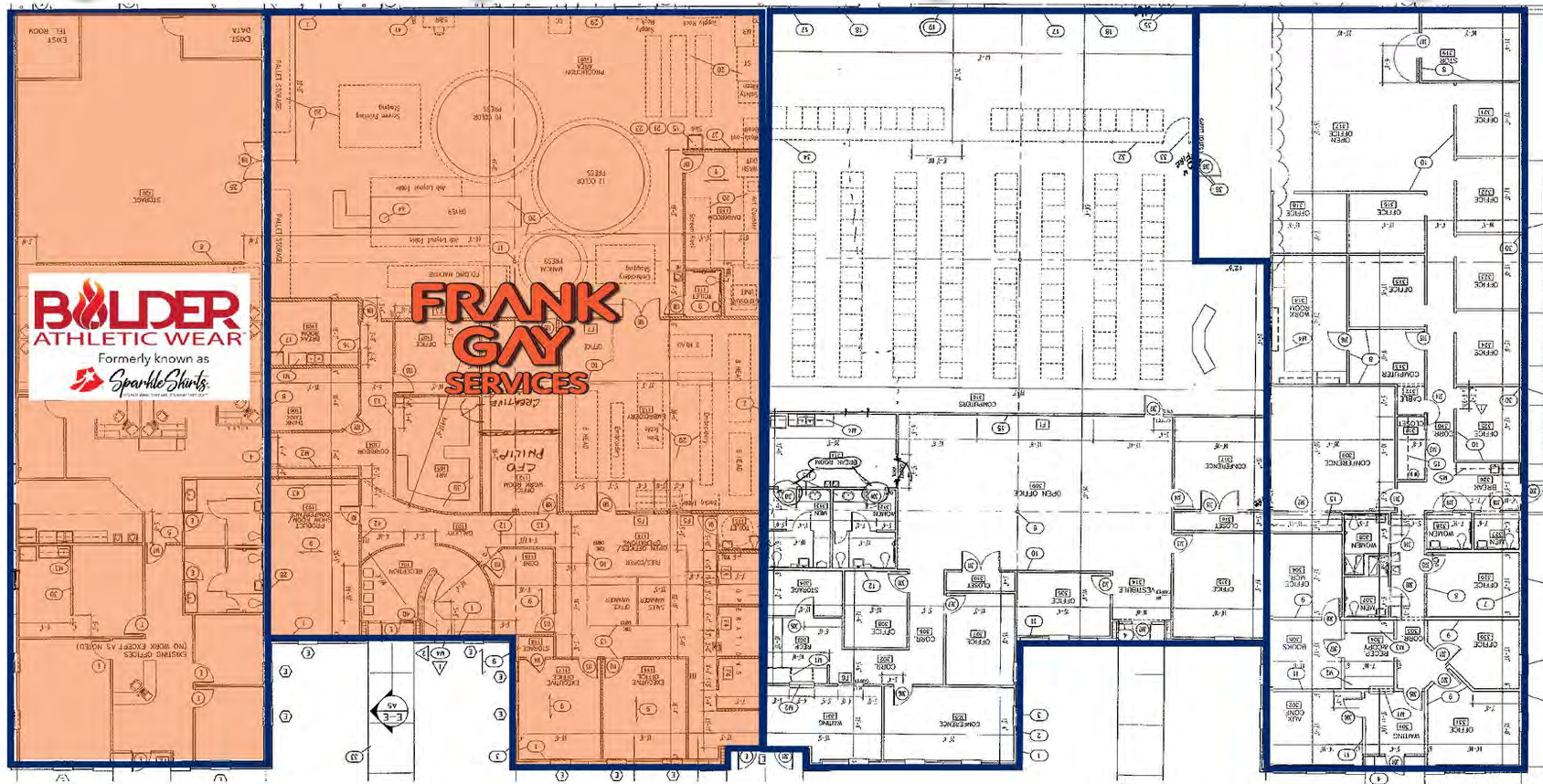
**Suite 200 - 300**



**Suite 400 - 500**  
8,323 ± SF

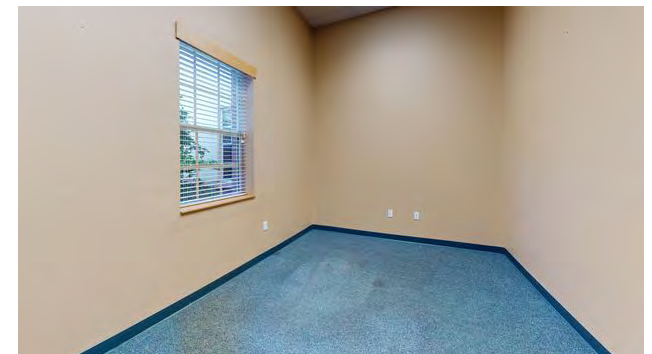
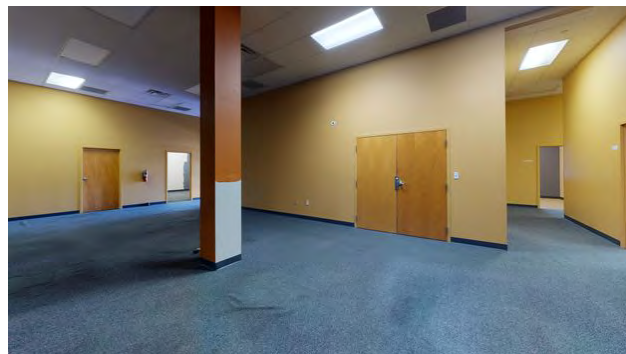
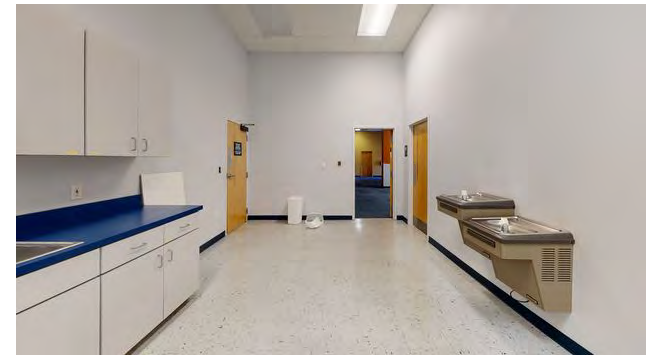
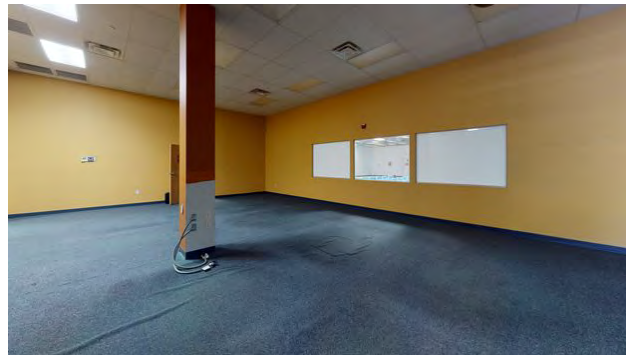


**Suite 600**  
5,277 ± SF



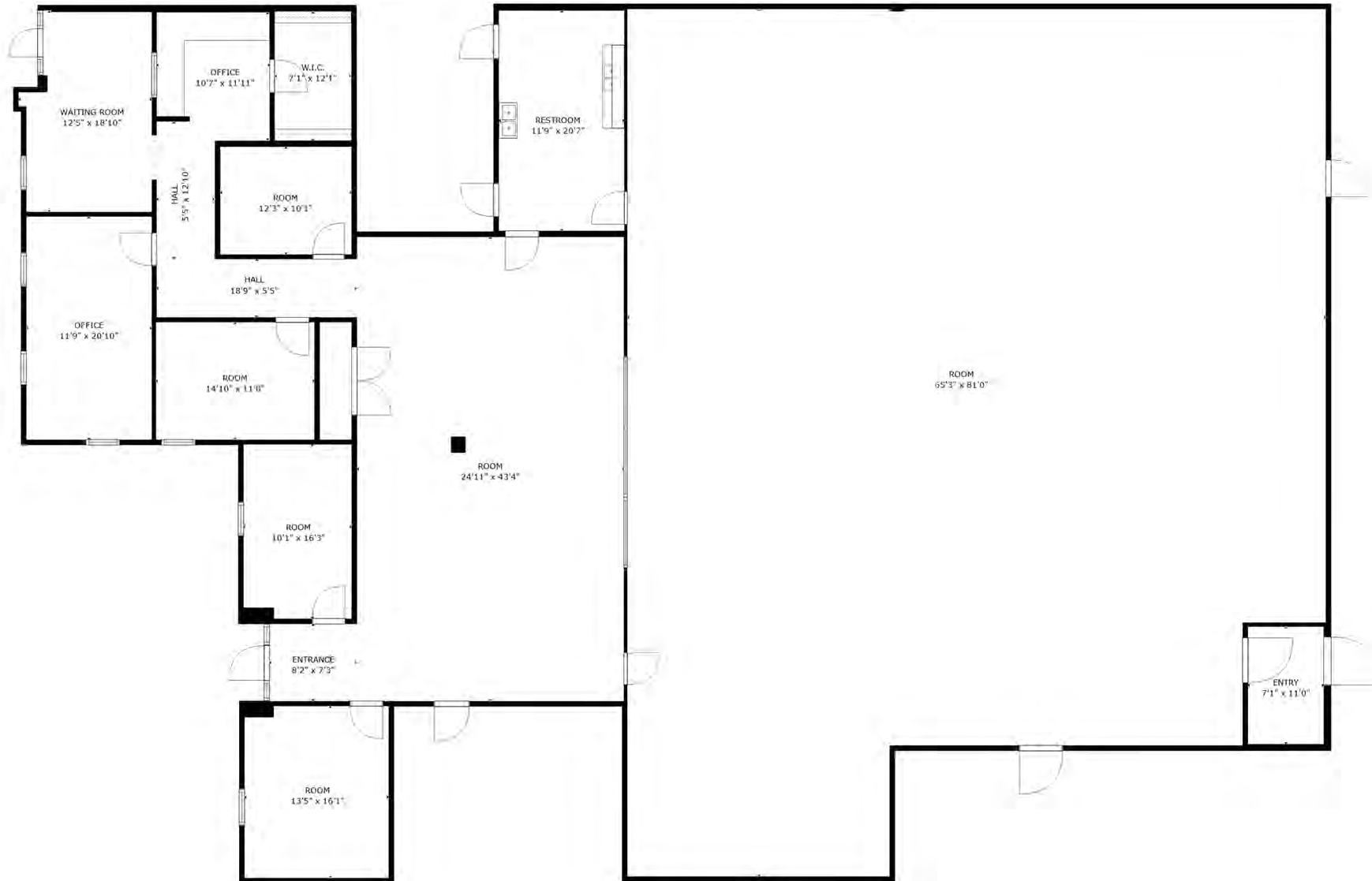


# Bldg. 6810 - Suite 400-500

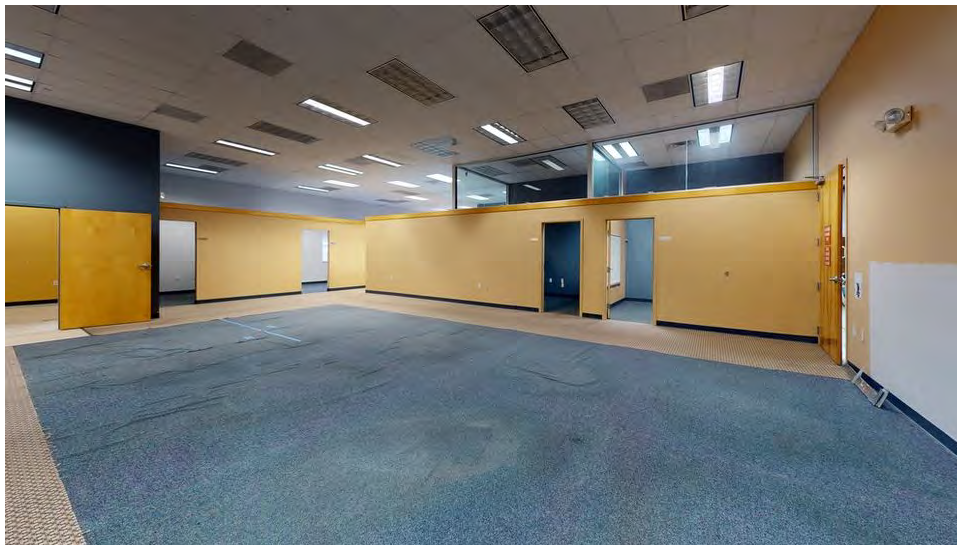




# Bldg. 6810 - Suite 400-500 Floor Plan



# Bldg. 6810 - Suite 600



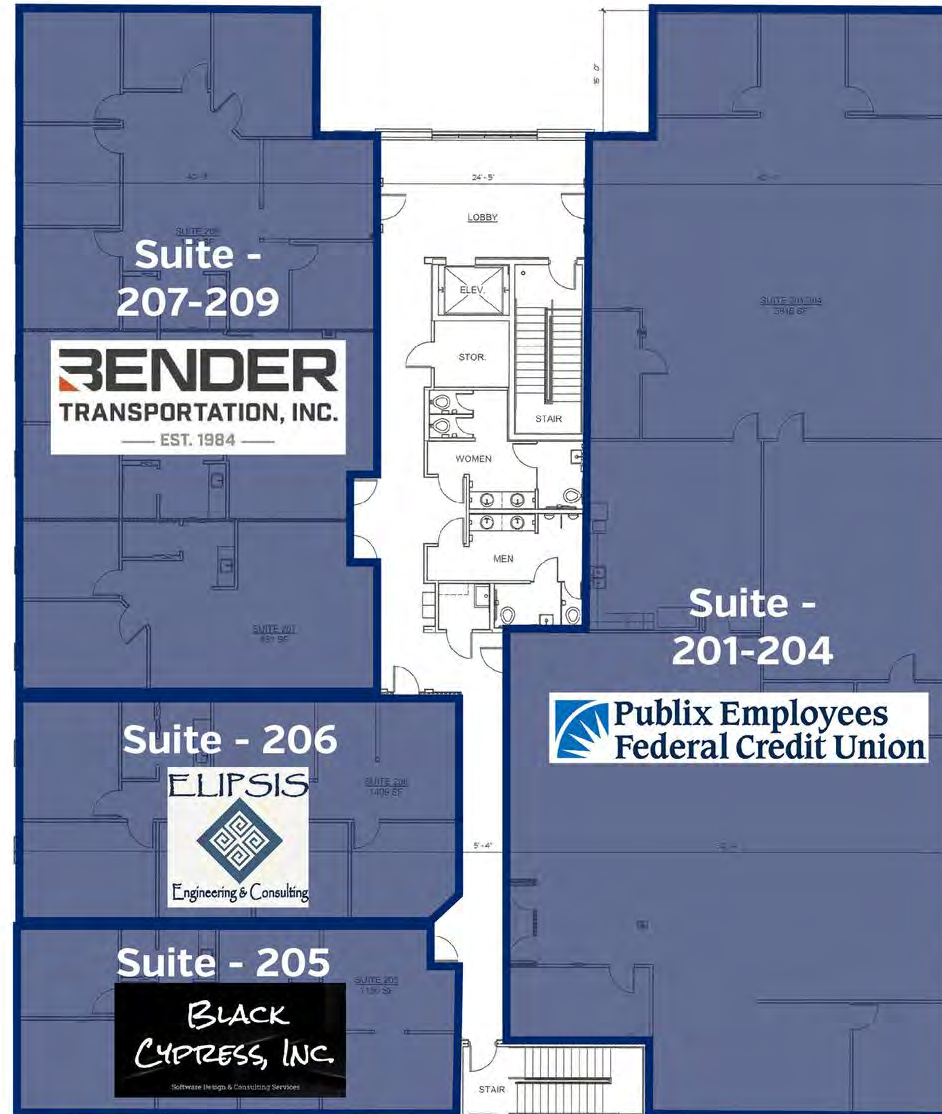


# Bldg. 6810 - Suite 600 Floor Plan



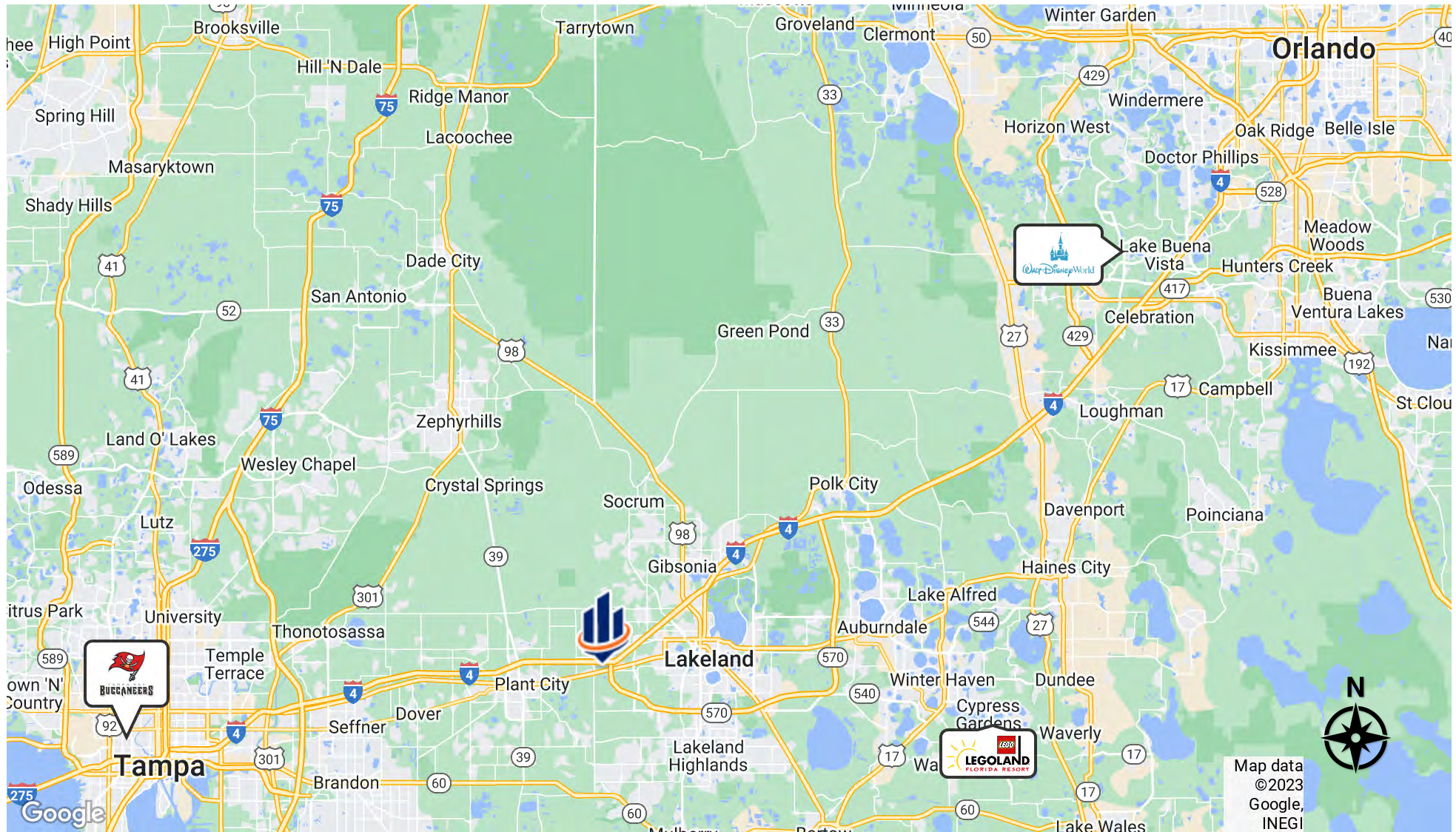
The information presented here is deemed to be accurate, but it has not been independently verified. We make no guarantee, warranty or representation. It is your responsibility to independently confirm accuracy and completeness. All SVN® offices are independently owned and operated.

# Bldg. 6790 - Available Spaces



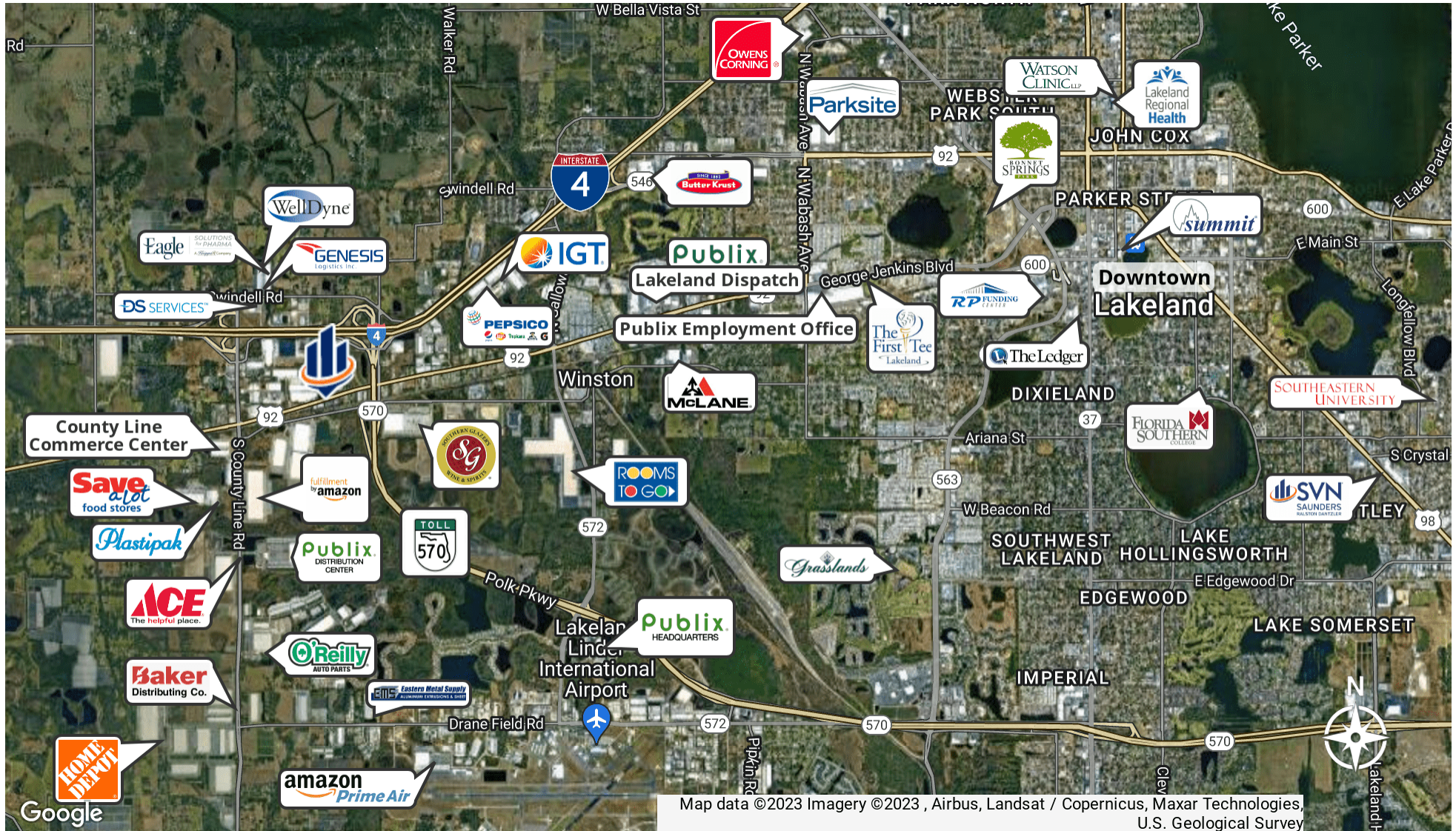


# Regional Map





# Market Area Map



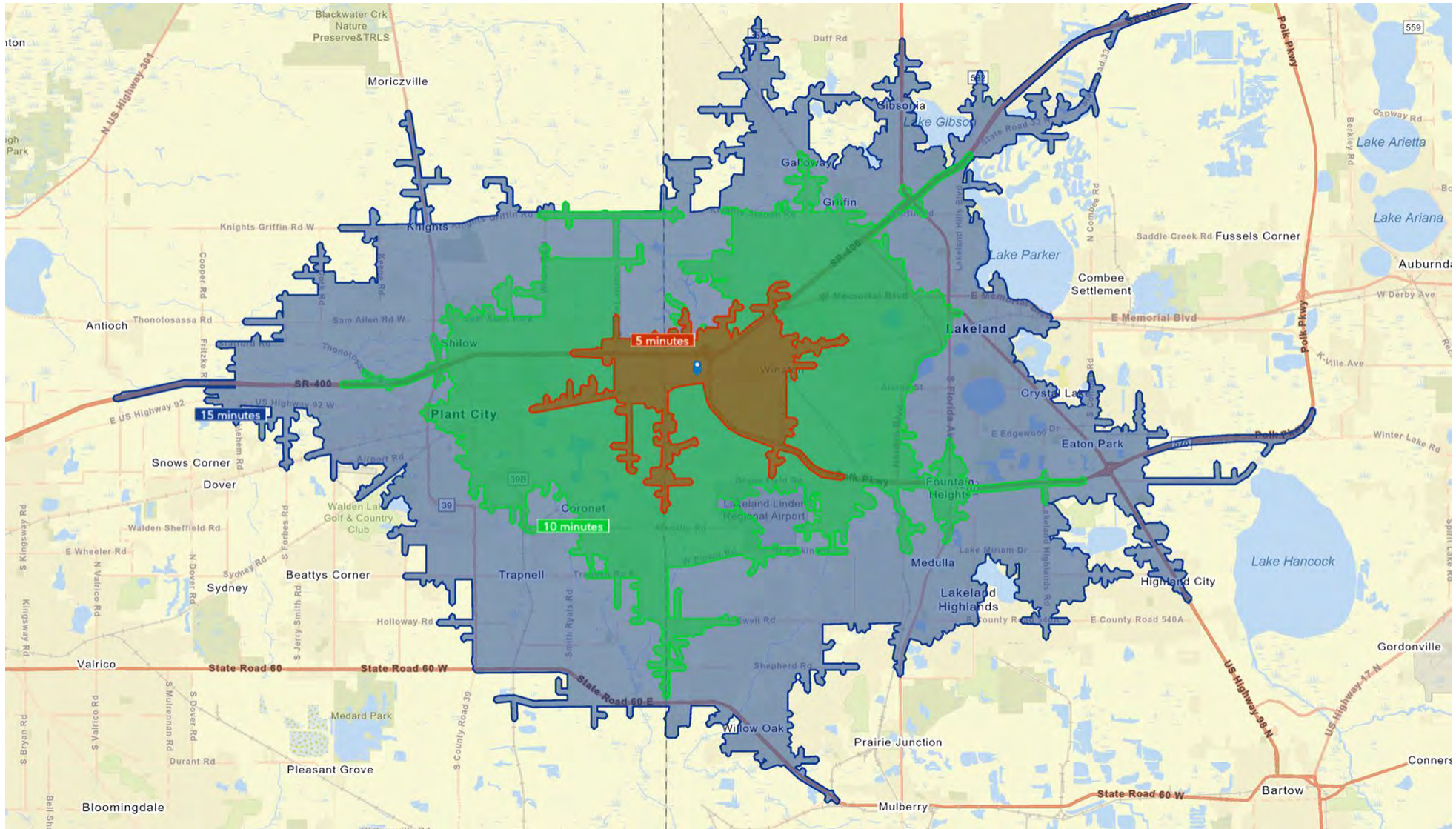


# Trade Area Map





# 5,10,15 Minute Drive Times





# Benchmark Demographics



	1 Mile	3 Miles	5 Miles	5 Mins	10 Mins	15 Mins	Lakeland	Polk County	FL	US
Population	648	13,337	68,380	4,548	58,290	218,297	114,770	754,798	22,114,754	335,707,897
Households	246	5,071	26,691	1,878	22,187	82,646	46,530	283,648	8,760,977	128,657,669
Families	135	3,459	17,688	1,126	14,400	54,033	27,549	196,634	5,648,790	83,407,414
Average Household Size	2.63	2.61	2.54	2.39	2.60	2.56	2.33	2.61	2.47	2.55
Owner Occupied Housing Units	176	3,610	18,029	1,296	14,128	51,325	26,636	199,229	5,794,353	83,145,410
Renter Occupied Housing Units	70	1,461	8,662	582	8,060	31,322	19,894	84,419	2,966,624	45,512,259
Median Age	49.1	40.8	40.3	46.5	39.5	38.80	40.5	41.9	42.8	38.9
Housing Unit/Household Ratio	1.27	1.17	1.18	1.27	1.18	1.16	1.19	1.23	1.20	1.13
Adjusted Population	731	13,848	71,528	5,120	61,234	224,114	121,236	824,953	23,508,530	
<b>Income</b>										
Median Household Income	\$63,767	\$53,685	\$52,221	\$51,183	\$50,562	\$55,565	\$53,162	\$57,063	\$65,438	\$72,414
Average Household Income	\$86,078	\$74,961	\$73,515	\$72,634	\$70,317	\$78,181	\$75,181	\$78,175	\$96,086	\$105,029
Per Capita Income	\$36,425	\$28,173	\$28,552	\$30,037	\$26,946	\$29,889	\$30,647	\$29,438	\$38,149	\$40,363
<b>Trends: 2022 - 2027 Annual Growth Rate</b>										
Population	1.35%	1.47%	1.91%	1.02%	1.12%	1.14%	0.78%	1.23%	0.61%	0.25%
Households	1.35%	1.35%	1.88%	0.99%	1.08%	1.16%	0.83%	1.23%	0.62%	0.31%
Families	1.30%	1.31%	1.86%	0.98%	1.04%	1.10%	0.74%	1.19%	0.59%	0.28%
Owner HHs	1.54%	1.64%	2.57%	1.25%	1.57%	1.61%	1.09%	1.43%	0.83%	0.53%
Median Household Income	2.59%	3.44%	3.33%	4.50%	2.81%	3.55%	3.18%	3.27%	3.75%	3.12%

Over 218,000 people with a median age of 38.80 within a 15-minute drive from the property.

Median household income of over \$63,000 within a 1-mile radius from the property.

# Benchmark Demographics



1 Mile 3 Miles 5 Miles 5 Mins 10 Mins 15 Mins Lakeland Polk County FL US

## Households by Income

	1 Mile	3 Miles	5 Miles	5 Mins	10 Mins	15 Mins	Lakeland	Polk County	FL	US
<\$15,000	6.90%	9.30%	11.00%	10.60%	12.20%	9.60%	10.70%	8.90%	8.30%	8.50%
\$15,000 - \$24,999	9.80%	10.30%	10.70%	11.50%	11.20%	9.70%	11.20%	9.60%	7.60%	7.20%
\$25,000 - \$34,999	6.90%	8.80%	10.80%	10.50%	11.10%	10.40%	10.80%	10.00%	8.40%	7.50%
\$35,000 - \$49,999	15.40%	17.20%	14.60%	15.90%	14.80%	14.00%	13.60%	13.60%	12.60%	11.10%
\$50,000 - \$74,999	17.50%	20.40%	21.40%	19.40%	20.50%	20.50%	20.00%	21.00%	18.70%	16.90%
\$75,000 - \$99,999	17.10%	14.00%	12.80%	14.40%	13.00%	13.70%	13.30%	14.90%	13.80%	13.20%
\$100,000 - \$149,999	11.40%	11.40%	10.90%	8.50%	10.40%	13.20%	12.10%	13.50%	15.90%	17.20%
\$150,000 - \$199,999	11.40%	5.00%	3.60%	5.40%	3.10%	4.50%	4.00%	4.50%	6.70%	8.40%
\$200,000+	4.10%	3.60%	4.20%	3.70%	3.60%	4.50%	4.20%	4.00%	7.90%	9.90%

## Population by Age

0 - 4	5.90%	6.40%	6.60%	5.80%	6.80%	6.20%	5.50%	5.70%	5.10%	5.80%
5 - 9	4.60%	6.40%	6.60%	5.50%	6.80%	6.20%	5.40%	5.90%	5.30%	6.10%
10 - 14	4.60%	6.40%	6.30%	5.40%	6.40%	6.10%	5.20%	5.90%	5.50%	6.20%
15 - 19	3.90%	5.20%	5.60%	4.40%	5.70%	6.50%	7.10%	5.90%	5.50%	6.30%
20 - 24	4.30%	5.00%	5.30%	4.50%	5.40%	6.40%	7.10%	5.60%	5.90%	6.50%
25 - 34	11.70%	13.50%	13.20%	12.10%	13.30%	13.80%	13.30%	12.90%	13.30%	14.00%
35 - 44	10.80%	11.70%	11.70%	10.70%	11.70%	11.80%	11.00%	11.60%	11.90%	12.80%
45 - 54	11.40%	11.30%	10.70%	10.80%	10.60%	10.90%	10.30%	11.20%	11.90%	12.00%
55 - 64	17.10%	13.20%	12.10%	13.90%	11.90%	12.00%	11.80%	12.80%	13.40%	12.80%
65 - 74	17.40%	12.10%	12.00%	14.70%	11.60%	10.70%	11.60%	12.60%	12.20%	10.20%
75 - 84	7.10%	6.90%	7.40%	9.30%	7.20%	6.50%	7.80%	7.40%	7.10%	5.20%
85+	1.10%	1.90%	2.70%	2.80%	2.60%	2.80%	3.90%	2.50%	2.80%	2.10%

## Race and Ethnicity

White Alone	60.20%	62.10%	57.70%	63.10%	53.80%	59.20%	59.10%	59.50%	56.70%	61.00%
Black Alone	6.50%	10.90%	16.20%	8.10%	18.50%	14.90%	18.50%	14.60%	14.90%	12.40%
American Indian Alone	0.80%	0.80%	0.70%	0.80%	0.70%	0.60%	0.50%	0.50%	0.40%	1.10%
Asian Alone	0.90%	1.00%	1.20%	1.00%	1.10%	1.70%	2.10%	1.90%	3.00%	6.10%
Pacific Islander Alone	0.00%	0.00%	0.10%	0.00%	0.10%	0.10%	0.10%	0.10%	0.10%	0.20%
Some Other Race Alone	11.70%	10.60%	10.10%	11.20%	11.10%	9.50%	7.60%	9.80%	7.50%	8.60%
Two or More Races	19.90%	14.60%	14.10%	15.80%	14.80%	14.00%	12.10%	13.70%	17.40%	10.60%
Hispanic Origin (Any Race)	33.20%	28.10%	27.70%	30.20%	29.90%	26.10%	20.90%	26.70%	27.10%	19.00%



## RANKINGS



**#1 TOP CITIES TO BUY A HOME**

[Businessinsider.com](https://www.businessinsider.com)



**BEST PLACE TO START A BUSINESS**

[Thelakelander.com](https://www.thelakelander.com)



**#80 IN BEST PLACES TO LIVE**

[Usnews.com](https://www.usnews.com)



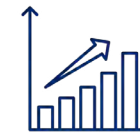
**#7 BEST PLACE TO MOVE IN THE US**

[Usnews.com](https://www.usnews.com)



**#14 IN SAFEST PLACES TO LIVE**

[Usnews.com](https://www.usnews.com)



**#5 IN FASTEST-GROWING PLACES IN THE U.S.**

[Usnews.com](https://www.usnews.com)

Lakeland is a vibrant community conveniently located along I-4 between Tampa and Orlando. With a population of just over 100,000, the city limits cover 74.4 square miles. Lakeland has many lakes that are community focal points, providing scenic areas for recreation. Much of Lakeland's culture and iconic neighborhoods are built around the 38 named lakes found in the community.

The City embraces its past, and that is evident strolling the tree-lined brick streets in the historic neighborhoods found throughout Lakeland. The area is home to Southeastern University, Florida Polytechnic University, Polk State College's Lakeland campus, and Florida Southern College, which hosts Frank Lloyd Wright architecture's most extensive on-site collection.

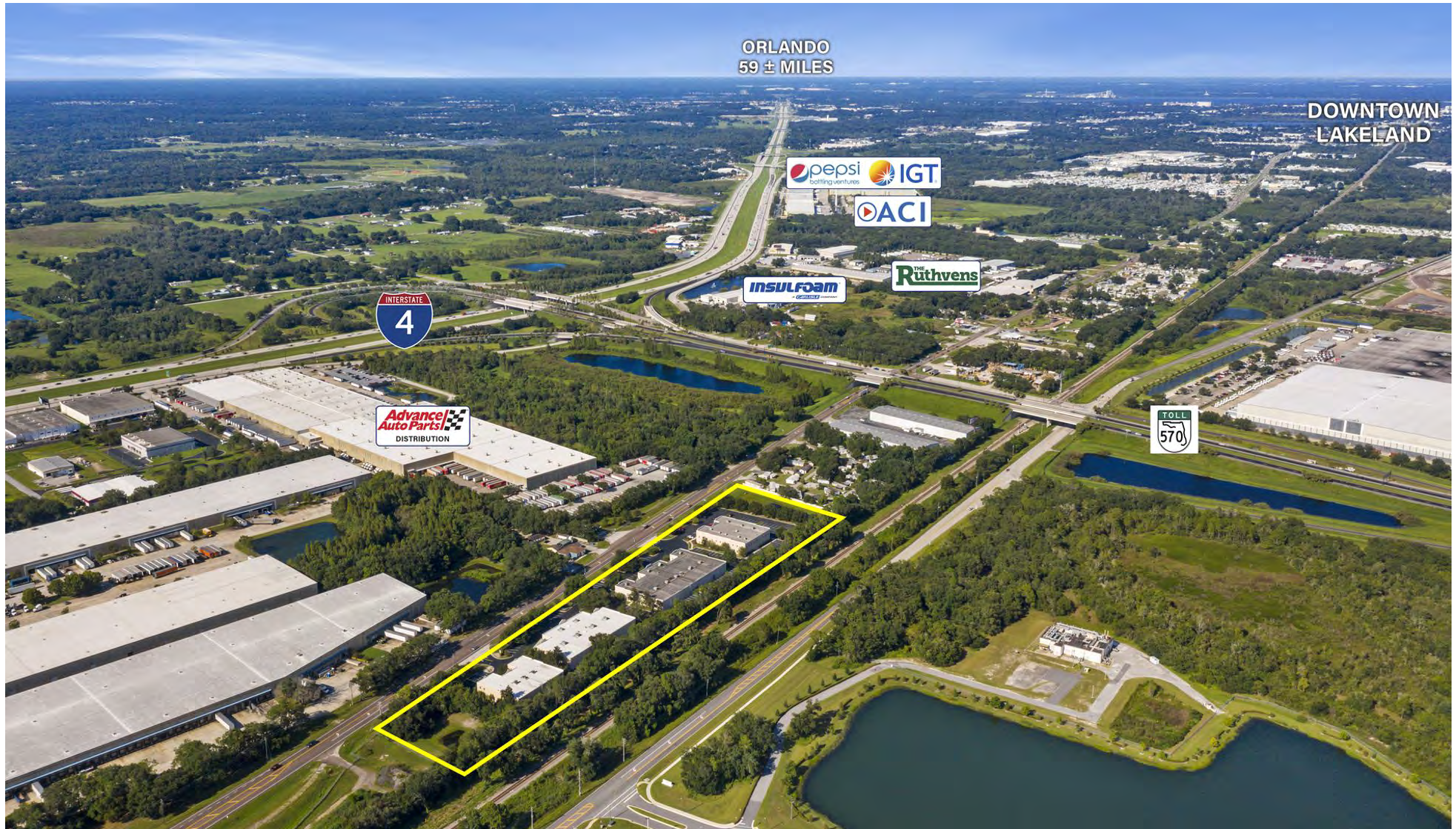
# Site Aerial



Map data ©2023 Imagery ©2023, Airbus, Maxar Technologies, U.S. Geological Survey



# Aerial Facing East





# Exterior Photos





# Aerial Facing West





**LAUREN SMITH, CCIM, CPM**

Senior Advisor

lauren.smith@svn.com

**Direct:** 877.518.5263 x428 | **Cell:** 863.873.1970

FL #SL3235233

## PROFESSIONAL BACKGROUND

Lauren Gengler, CCIM, CPM, is an Asset Manager & Senior Advisor at SVN | Saunders Ralston Dantzler Real Estate in Lakeland, Florida.

Lauren works with clients to increase the value and performance of their real estate investments. She believes that by evaluating each property carefully to determine its strengths and weaknesses, it allows for maximum efficiency and profitability.

Lauren has worked in the real estate industry for over 10 years, handling every aspect, such as sales, leasing, property management & development. She is a member of International Council of Shopping Centers (ICSC) and Certified Property Manager (CPM) through the Institute of Real Estate Management (IREM).

### Disciplines:

- Sales
- Leasing
- Property management
- Development



# Disclaimer



The material contained in this Offering Memorandum is furnished solely for the purpose of considering the purchase of the property within and is not to be used for any other purpose. This information should not, under any circumstances, be photocopied or disclosed to any third party without the written consent of the SVN® Advisor or Property Owner, or used for any purpose whatsoever other than to evaluate the possible purchase of the Property.

The only party authorized to represent the Owner in connection with the sale of the Property is the SVN Advisor listed in this proposal, and no other person is authorized by the Owner to provide any information or to make any representations other than contained in this Offering Memorandum. If the person receiving these materials does not choose to pursue a purchase of the Property, this Offering Memorandum must be returned to the SVN Advisor.

Neither the SVN Advisor nor the Owner make any representation or warranty, express or implied, as to the accuracy or completeness of the information contained herein, and nothing contained herein is or shall be relied upon as a promise or representation as to the future representation of the Property. This Offering Memorandum may include certain statements and estimates with respect to the Property. These Assumptions may or may not be proven to be correct, and there can be no assurance that such estimates will be achieved. Further, the SVN Advisor and the Owner disclaim any and all liability for representations or warranties, expressed or implied, contained in or omitted from this Offering Memorandum, or any other written or oral communication transmitted or made available to the recipient. The recipient shall be entitled to rely solely on those representations and warranties that may be made to it in any final, fully executed and delivered Real Estate Purchase Agreement between it and Owner.

The information contained herein is subject to change without notice and the recipient of these materials shall not look to Owner or the SVN Advisor nor any of their officers, employees, representatives, independent contractors or affiliates, for the accuracy or completeness thereof. Recipients of this Offering Brochure are advised and encouraged to conduct their own comprehensive review and analysis of the Property.

This Offering Memorandum is a solicitation of interest only and is not an offer to sell the Property. The Owner expressly reserves the right, at its sole discretion, to reject any or all expressions of interest to purchase the Property and expressly reserves the right, at its sole discretion, to terminate negotiations with any entity, for any reason, at any time with or without notice. The Owner shall have no legal commitment or obligation to any entity reviewing the Offering Memorandum or making an offer to purchase the Property unless and until the Owner executes and delivers a signed Real Estate Purchase Agreement on terms acceptable to Owner, in Owner's sole discretion. By submitting an offer, a prospective purchaser will be deemed to have acknowledged the foregoing and agreed to release the Owner and the SVN Advisor from any liability with respect thereto.

To the extent Owner or any agent of Owner corresponds with any prospective purchaser, any prospective purchaser should not rely on any such correspondence or statements as binding Owner. Only a fully executed Real Estate Purchase Agreement shall bind the property and each prospective purchaser proceeds at its own risk.



For more information visit [www.SVNsaunders.com](http://www.SVNsaunders.com)

**HEADQUARTERS**

1723 Bartow Rd  
Lakeland, FL 33801  
863.648.1528

**ORLANDO**

605 E Robinson Street, Suite 410  
Orlando, Florida 32801  
386.438.5896

**NORTH FLORIDA**

356 NW Lake City Avenue  
Lake City, Florida 32055  
352.364.0070

**GEORGIA**

218 W Jackson Street, Suite 203  
Thomasville, Georgia 31792  
229.299.8600

©2023 SVN | Saunders Ralston Dantzler Real Estate. All SVN® Offices Independently Owned and Operated SVN | Saunders Ralston Dantzler Real Estate is a full-service land and commercial real estate brokerage with over \$3 billion in transactions representing buyers, sellers, investors, institutions, and landowners since 1996. We are recognized nationally as an authority on all types of land, including agriculture, ranch, recreation, residential development, and international properties. Our commercial real estate services include marketing, property management, leasing and tenant representation, valuation, business brokerage, and advisory and counseling services for office, retail, industrial, and multi-family properties. Our firm also features an auction company, forestry division, international partnerships, hunting lease management, and extensive expertise in conservation easements. Located at the center of Florida's I-4 corridor, we provide proven leadership and collaborative expertise backed by the strength of the SVN® global platform. To learn more, visit [SVNsaunders.com](http://SVNsaunders.com).

