

# ORLANDO APOPKA

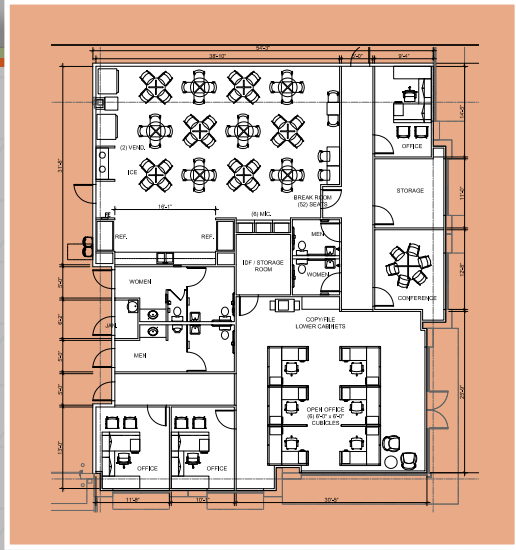
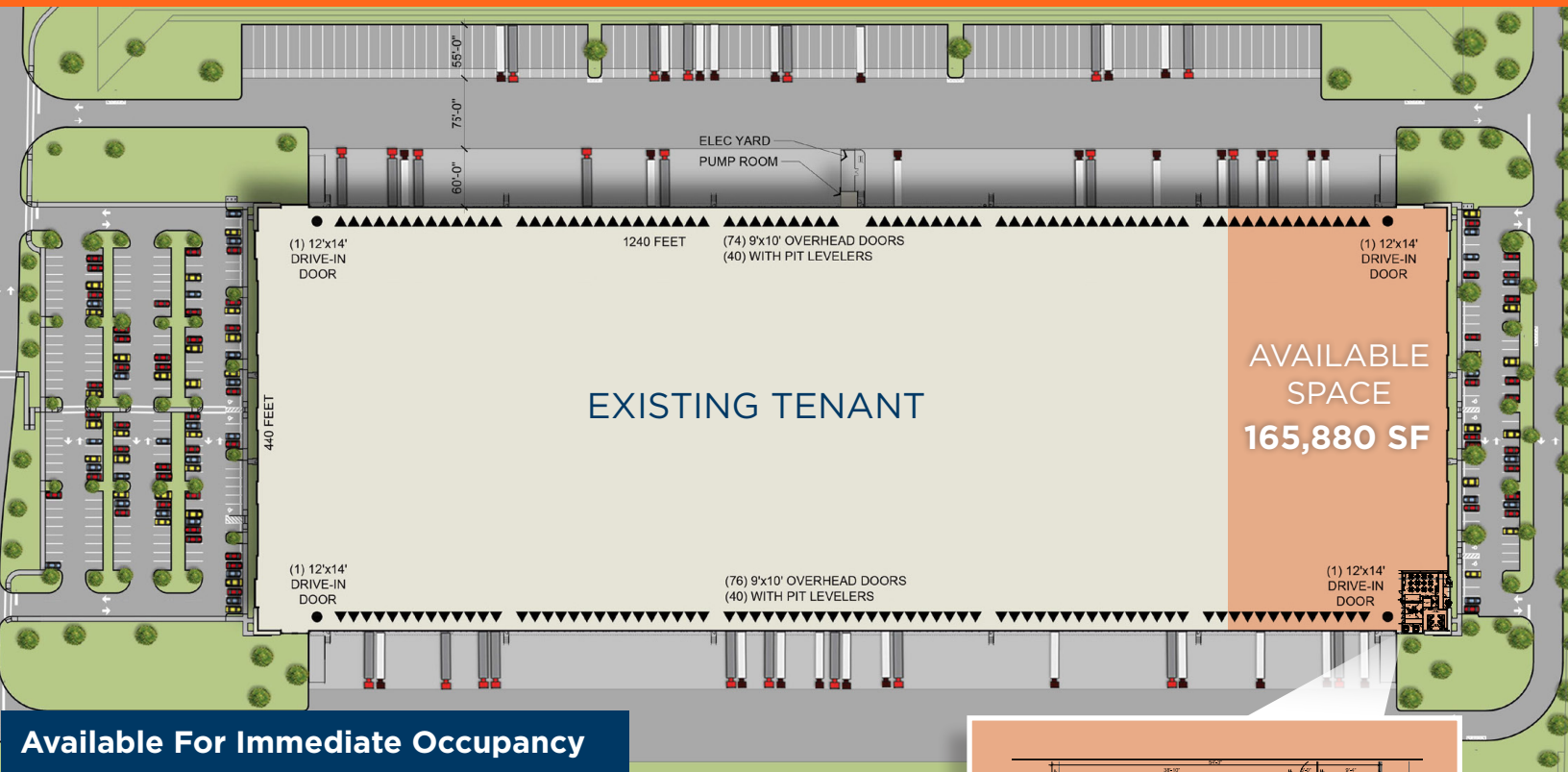
— Commerce Center —

**5050 Wesley Road | Apopka, FL**  
165,880 RSF Industrial Space Available

**FOR SUBLEASE**



# SUBLEASE OVERVIEW



Total Building:  
**546,829 SF**



Total Available:  
**165,880 SF**



Opex:  
**\$1.93 PSF**



Sublease Expiration:  
**March 2028**



Office SF:  
**3,652 SF**



Clear Height:  
**40'**



Docks/Grades:  
**22 docks (9x10) /  
2 grade (12x14)**



Configuration:  
**Cross Dock**



Parking Ratio:  
**.50/1,000 SF**



Building Dimensions:  
**1,240' L x 440' W**



Column Spacing:  
**54' L x 53' W  
60' Speed Bay**



Truck Court:  
**135'**



Fire Suppression:  
**ESFR**



Electrical:  
**480/277 volt,  
3-phase**



Roof:  
**Single-Ply/45-mil/  
White TPO**



Trailer Parking:  
**35 Spots**

# LOCATION



## Accessibility

- - - 1.8 miles/ 3 mins  
to FL-429
- - - 13 miles/13 mins  
to Florida's Turnpike
- - - 25 miles/ 23 MINS  
to I-4/ Downtown Orlando



## Corporate Neighbors

# ORLANDO APOPKA

Commerce Center

5050 Wesley Road | Apopka, FL

165,880 RSF Industrial Space Available



**Jared Bonshire**  
Executive Managing Director  
+1 407 541 4414  
jared.bonshire@cushwake.com

**David Perez**  
Executive Managing Director  
+1 407 541 4435  
david.perez@cushwake.com

**Taylor Zambito**  
Senior Director  
+1 407 541 4409  
taylor.zambito@cushwake.com

**Ryan Hubbard**  
Director  
+1 407 541 4390  
ryan.hubbard@cushwake.com

Drive Time From **Orlando**

©2023 Cushman & Wakefield. All rights reserved. The material in this presentation has been prepared solely for information purposes, and is strictly confidential. Any disclosure, use, copying or circulation of this presentation (or the information contained within it) is strictly prohibited, unless you have obtained Cushman & Wakefield's prior written consent. The views expressed in this presentation are the views of the author and do not necessarily reflect the views of Cushman & Wakefield. Neither this presentation nor any part of it shall form the basis of, or be relied upon in connection with any offer, or act as an inducement to enter into any contract or commitment whatsoever. NO REPRESENTATION OR WARRANTY IS GIVEN, EXPRESS OR IMPLIED, AS TO THE ACCURACY OF THE INFORMATION CONTAINED WITHIN THIS PRESENTATION, AND CUSHMAN & WAKEFIELD IS UNDER NO OBLIGATION TO SUBSEQUENTLY CORRECT IT IN THE EVENT OF ERRORS.