

Mixed Use Development Opportunity for Sale

For Sale \$5,000,000
2741-2749 E Atlantic Blvd,
Pompano Beach, FL 33062



FOR SALE	17,389 Sq. Ft. on 10,500 Sq. Ft. Lot		
DESCRIPTION	The Atlantic Building is a 3 story 17,389 Sq. Ft. building located in the heart of the Transit Oriented Development corridor in Pompano Beach. Anchor tenant is Desjardins Bank. Present income is \$300k+-. Current MM Zoning would allow 90 units/ acre and 85' height. New Transit Oriented EOD zoning would permit a variety of uses including hotel, multi- family residential, and numerous office & retail uses. Perfect for the buyer seeking high traffic counts and income demographics.		
PROPERTY VIDEO	https://www.youtube.com/embed/89jHics81-Y?rel=0		
LOCATION	Approximately half way between US-1 And Intracoastal Waterway on Atlantic Blvd.		
PARKING/ YEAR BUILT	Common metered parking in front. 16 spaces in rear. Built 1959.		
PRICING	For Sale \$5,000,000 or \$287.53/ sq. ft..		
TRAFFIC COUNT	30,910 Atlantic Blvd.		
ZONING/ FOLIO	TO-EOD Folio 4843-31-15-0050		
DEMOGRAPHICS 2023 Estimate	1 mile	3 mile	5 mile
	HH Population:	18,219	97,844
	Average HH Income:	\$90,474	\$89,813
			231,038
			\$88,331

Disclaimer: This offering subject to errors, omissions, prior sale or withdrawal without notice.

CAMPBELL & ROSEMURGY
COMMERCIAL REAL ESTATE

FOR MORE INFORMATION:

John D. McQuestion

john@johnmcquestion.com • 561-706-7721 (cell)

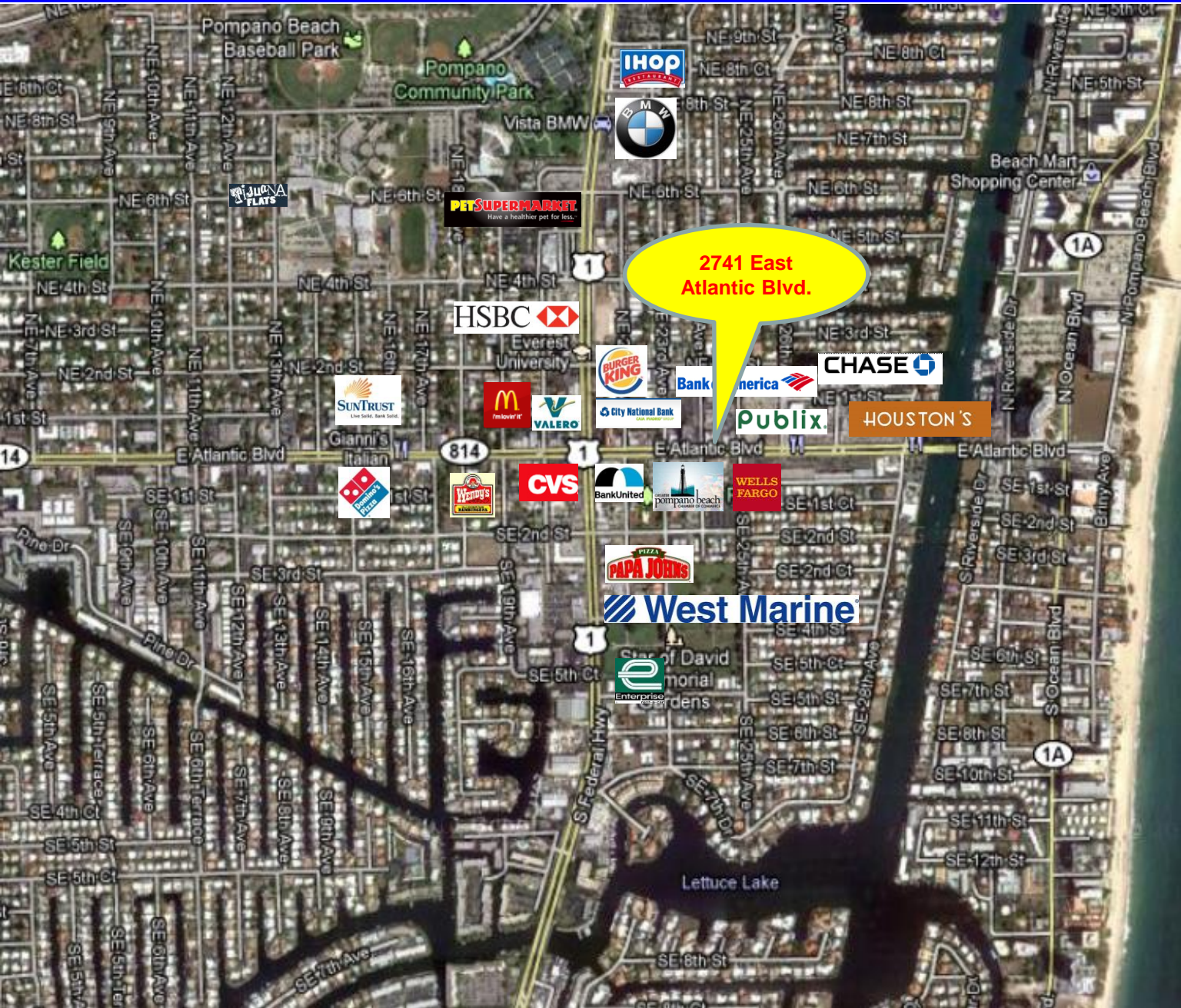
www.johnmcquestion.com

1233 E. Hillsboro Blvd
Deerfield Beach, FL 33441

954.427.8686 T.
954.427.0117 F.

Location Map

For Sale \$5,000,000
2741-2749 E Atlantic Blvd,
Pompano Beach, FL 33062



Disclaimer: This offering subject to errors, omissions, prior sale or withdrawal without notice.

CAMPBELL & ROSEMURGY
COMMERCIAL REAL ESTATE

FOR MORE INFORMATION:

John D. McQuestion

john@johnmcquestion.com • 561-706-7721 (cell)

www.johnmcquestion.com

1233 E. Hillsboro Blvd
Deerfield Beach, FL 33441

954.427.8686 T.
954.427.0117 F.

Additional Photos

For Sale \$5,000,000
2741-2749 E Atlantic Blvd,
Pompano Beach, FL 33062

Aerial



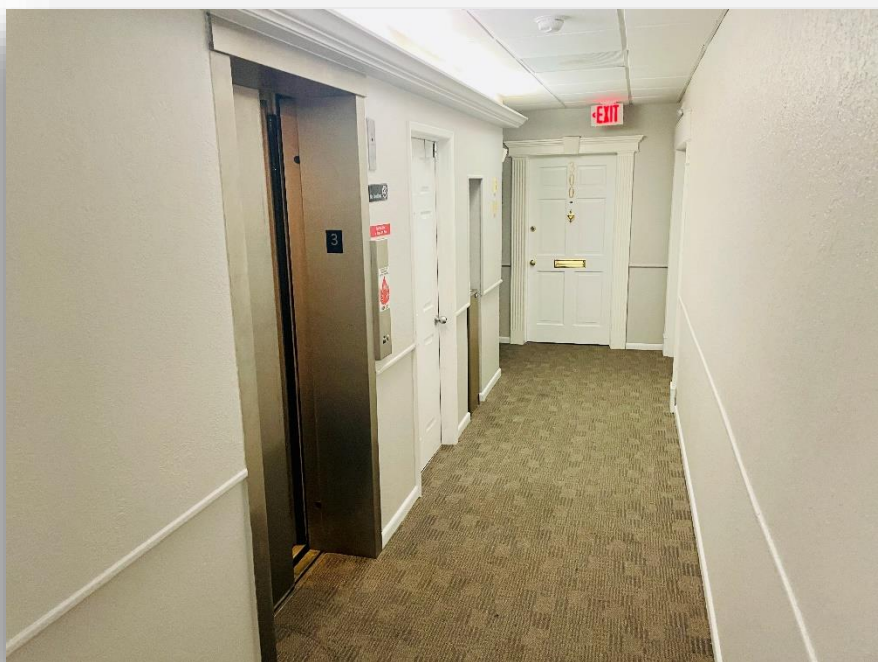
Street View



Zoning Aerial



Interior



Disclaimer: This offering subject to errors, omissions, prior sale or withdrawal without notice.

CAMPBELL & ROSEMURGY
COMMERCIAL REAL ESTATE

John D. McQueston

john@johnmcqueston.com • 561-706-7721 (cell)

www.johnmcqueston.com

1233 E. Hillsboro Blvd
Deerfield Beach, FL 33441

954.427.8686 T.
954.427.0117 F.