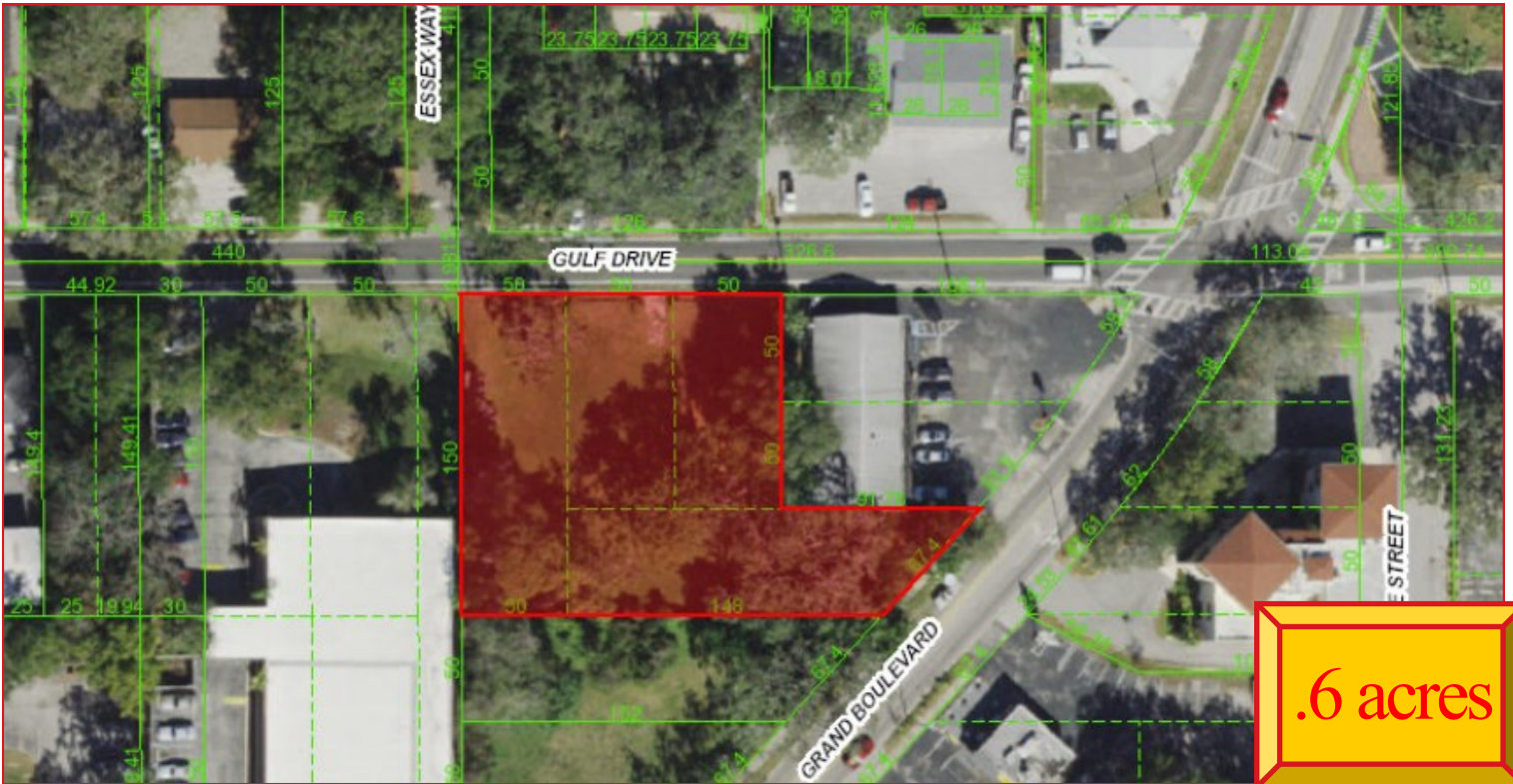


5650 GULF DRIVE, NEW PORT RICHEY, FL 34652



.6 acres

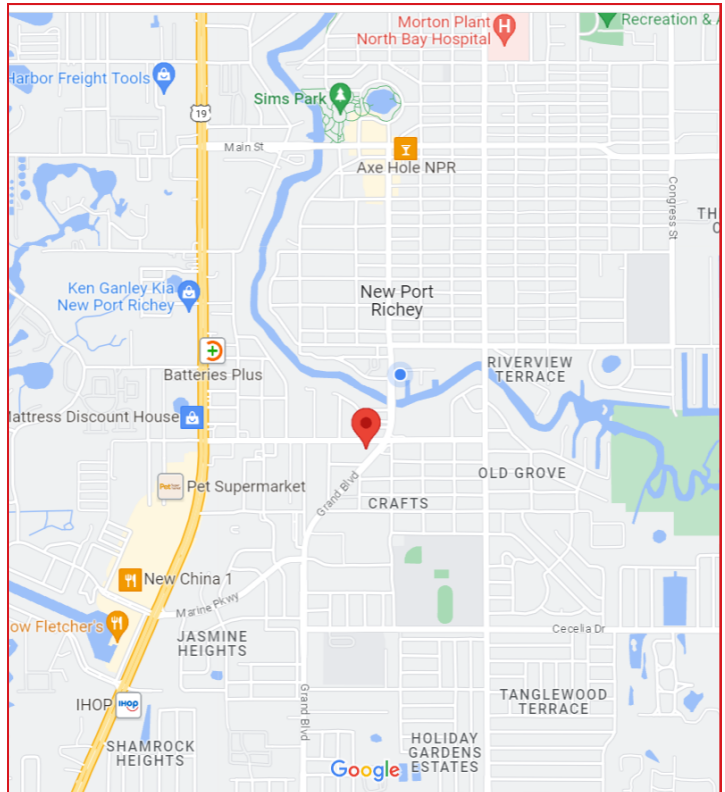
VACANT LAND FOR SALE

Offered at: \$145,000

Location: On Gulf Drive just before Grand Blvd.

Property Highlights:

- Virtual Corner Location
- Easy Access, Sewer and Water Available to site
- Double Road Frontage
- Commercial Zoning, City Of New Port Richey



The information given herewith is obtained from sources we consider reliable. We are not responsible for misstatements of facts, errors, omissions, changes in terms or conditions, or withdrawal from the market without prior notice.

FOR MORE INFORMATION

Jeff Grey
 727-481-4562
 Jeff@figrey.com

Chuck Grey
 727-849-2424
 Chuck@figrey.com

Bob Upton
 727-214-7764
 Robertwupton@figrey.com



5636 Grand Blvd., Suite A
 New Port Richey, FL 34652
 727.849.2424
 www.figrey.com

Established in 1924
Serving Florida for over 99 years!

5650 GULF DRIVE, NEW PORT RICHEY, FL 34652



Demographics

	Radius		
	1-Mile	3-Miles	5-Miles
Population:	12,702	74,458	158,706
Households:	5,855	33,487	68,844
Average HH Income:	\$63,901	\$65,792	\$68,747
Traffic Counts: (FDOT)	7,500 AADT on Gulf Drive 6600 on AADT on Grand Blvd.		

PROPERTY STATISTICS

Site	
Size	.6 ac
Zoning	OFC
Taxes (2022)	\$1,929.41

FOR MORE INFORMATION

Jeff Grey
727-481-4562
Jeff@figrey.com

Chuck Grey
727-849-2424
Chuck@figrey.com

Bob Upton
727-214-7764
Robertwupton@figrey.com



P. 727.849.2424 | F. 727.842.6596

5636 Grand Blvd., Suite A, New Port Richey, FL 34652
www.figrey.com | www.Facebook.com/figreycommercial