

NOW PRE-LEASING

1801 WEST FAIRBANKS AVENUE

WINTER PARK, FL 32789



Matt Weinberger
Vice President

Healthcare Real Estate Advisor

D 321.281.8510

M 239.246.1030

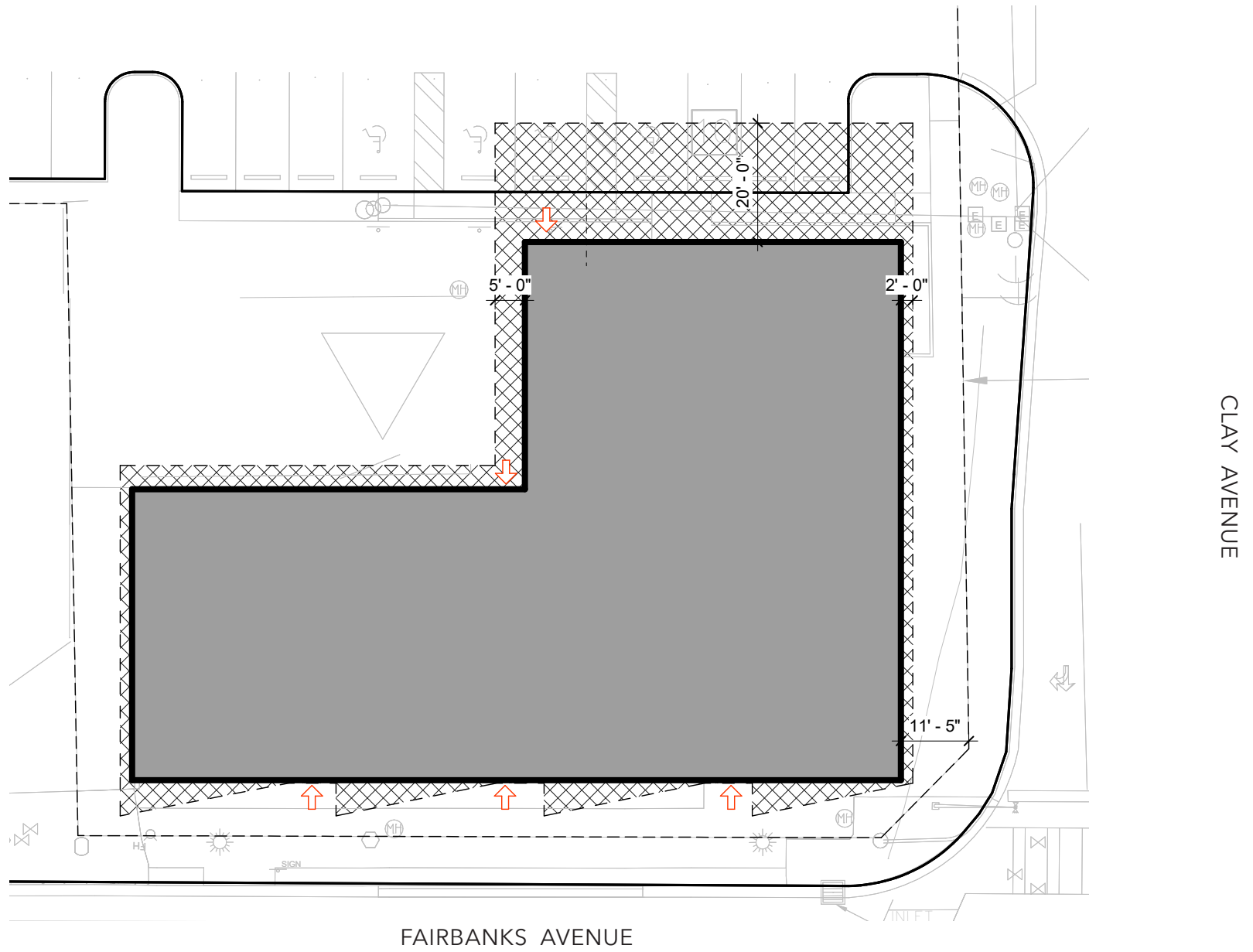
E mweinberger@lee-associates.com

FAIRBANKS MEDICAL ARTS BUILDING
PREMIER CLASS "A" MEDICAL OFFICE DEVELOPMENT
FROM 1,500 - 20,450 ± RSF AVAILABLE

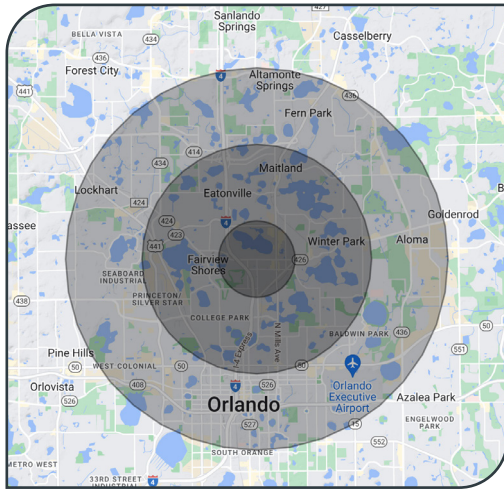


- From 1,500 - 20,450± RSF Available
- Standalone MOB with direct frontage on West Fairbanks Avenue (31,000 AADT)
- Located within a 3 mile radius from:
 - AdventHealth Orlando Main Hospital (1.2 miles)
 - AdventHealth Winter Park Hospital (2.7 miles)
 - Winter Park Village & Park Avenue Retail
 - Rollins College (1.4 miles)
- Parking Ratio: 5.00/1,000 SF
- Zoning: C-3, City of Winter Park





31,000 AADT



Population

1 Mile: 7,572
3 Mile: 78,554
5 Mile: 266,789



Households

1 Mile: 4,465
3 Mile: 38,950
5 Mile: 127,663



Avg Household Income

1 Mile: \$97,786
3 Mile: \$137,994
5 Mile: \$91,739





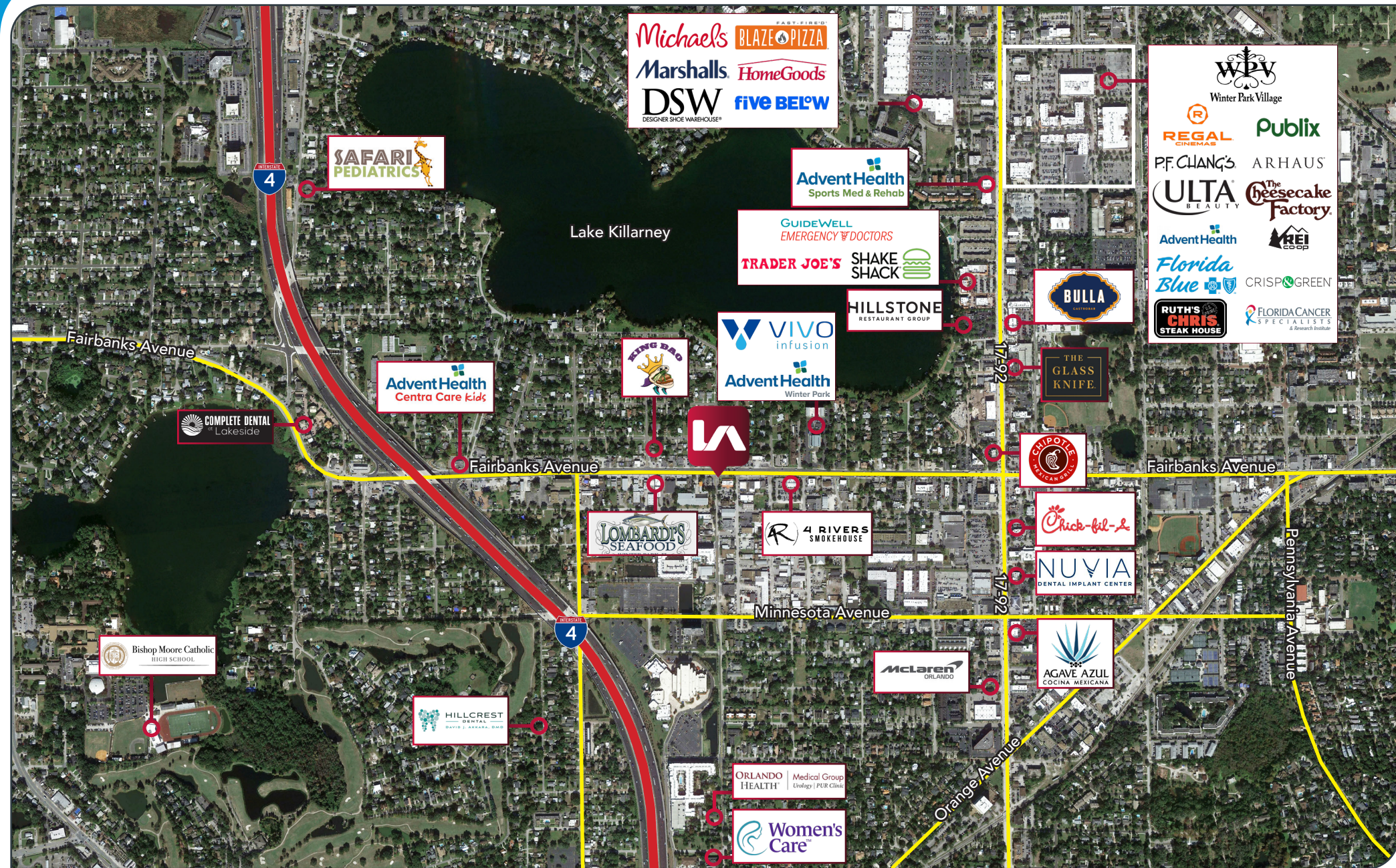
FRONTAGE ON FAIRBANKS AVENUE



FRONTING CLAY STREET



CORNER OF FAIRBANKS AVENUE & CLAY STREET





For more information, please contact one of the following individuals:

CONTACT

Matt Weinberger
Vice President

Healthcare Real Estate Advisor

D 321.281.8510

M 239.246.1030

E mweinberger@lee-associates.com