

Wabun Street X Cheemaun Avenue

Palm Bay, FL 32905

Corner Lot / Centrally Located / City Water & Sewer



OFFERING SUMMARY

Sale Price: \$125,000

Acreage: 0.73 Acres

Zoning: Palm Bay Single Family Residential (RS-3)

BCPA Account #: 2825888

PROPERTY OVERVIEW

Est. 163' Frontage on Wabun Street

Est. 188' Frontage on Cheemaun Avenue

Depth Ranges 161' +/- on Western Boundary to 200' +/- on Southern Boundary

Nearby Utilities: City of Palm Bay Water/Sewer, FPL Electric

RS-3 Zoning Permits Single Family Dwellings

Maximum Height 25' Per City of Palm Bay

Maximum Building Coverage 30% Per City of Palm Bay

Corner of Cheemaun Avenue x Keewin Avenue Sold Separately (Call for Details)

LOCATION OVERVIEW

Located in northeast Palm Bay approximately halfway between Palm Bay Road & Robert J. Conlan Boulevard. Close proximity to the Indian River Lagoon, Florida Tech, Downtown Melbourne, and all of the other Education, Entertainment, Dining and Beaches that the area has to offer.

Zachary Ullian

Broker Associate

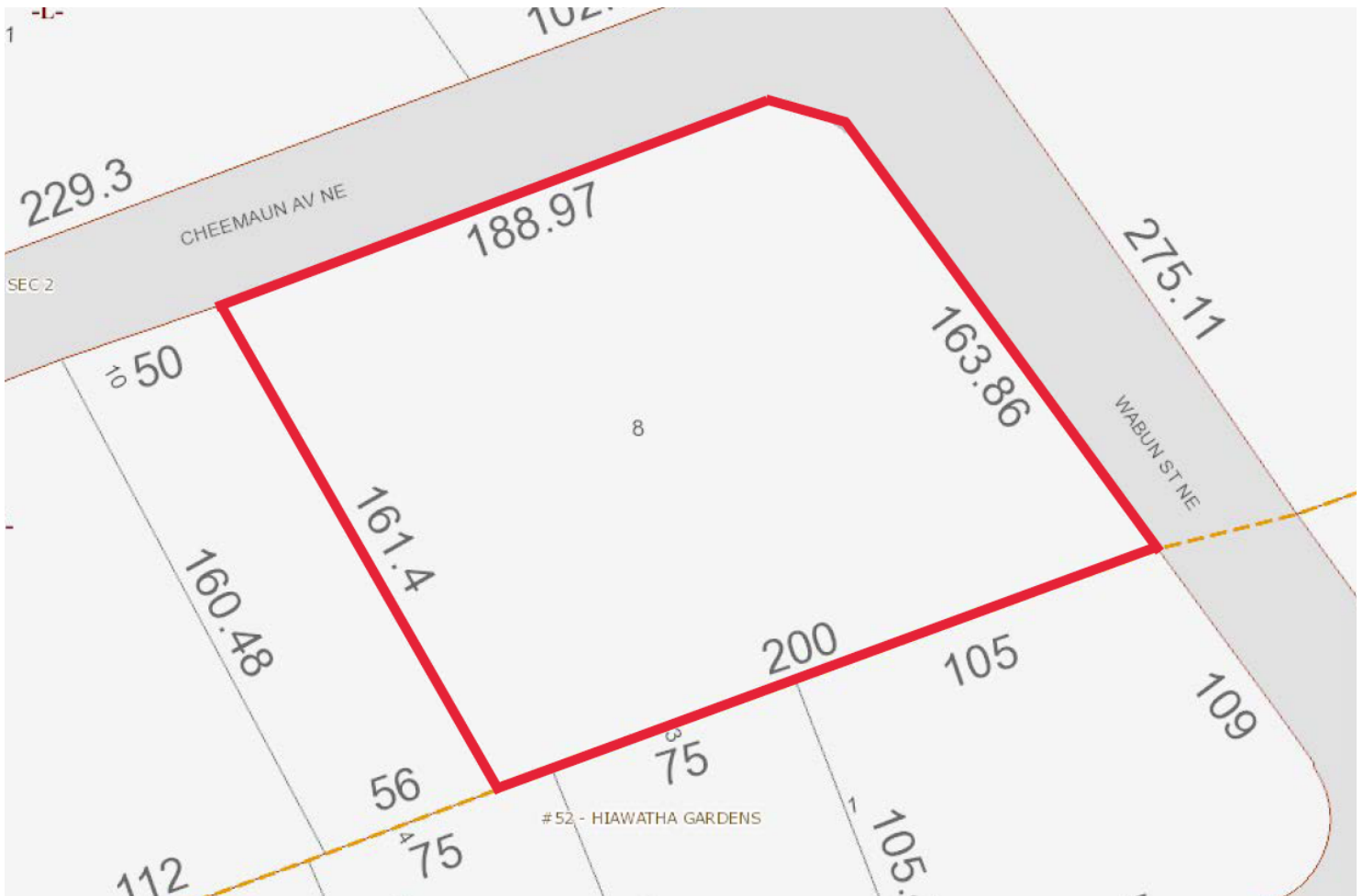
Cell: 321.750.3439

zach@ullianrealty.com

Wabun Street X Cheemaun Avenue

Palm Bay, FL 32905

Plat Map (Dimensions Estimated)



Zachary Ullian

Broker Associate

Cell: 321.750.3439

zach@ullianrealty.com

Wabun Street X Cheemaun Avenue

Palm Bay, FL 32905

City of Palm Bay Utility Map & Street View



Zachary Ullian

Broker Associate

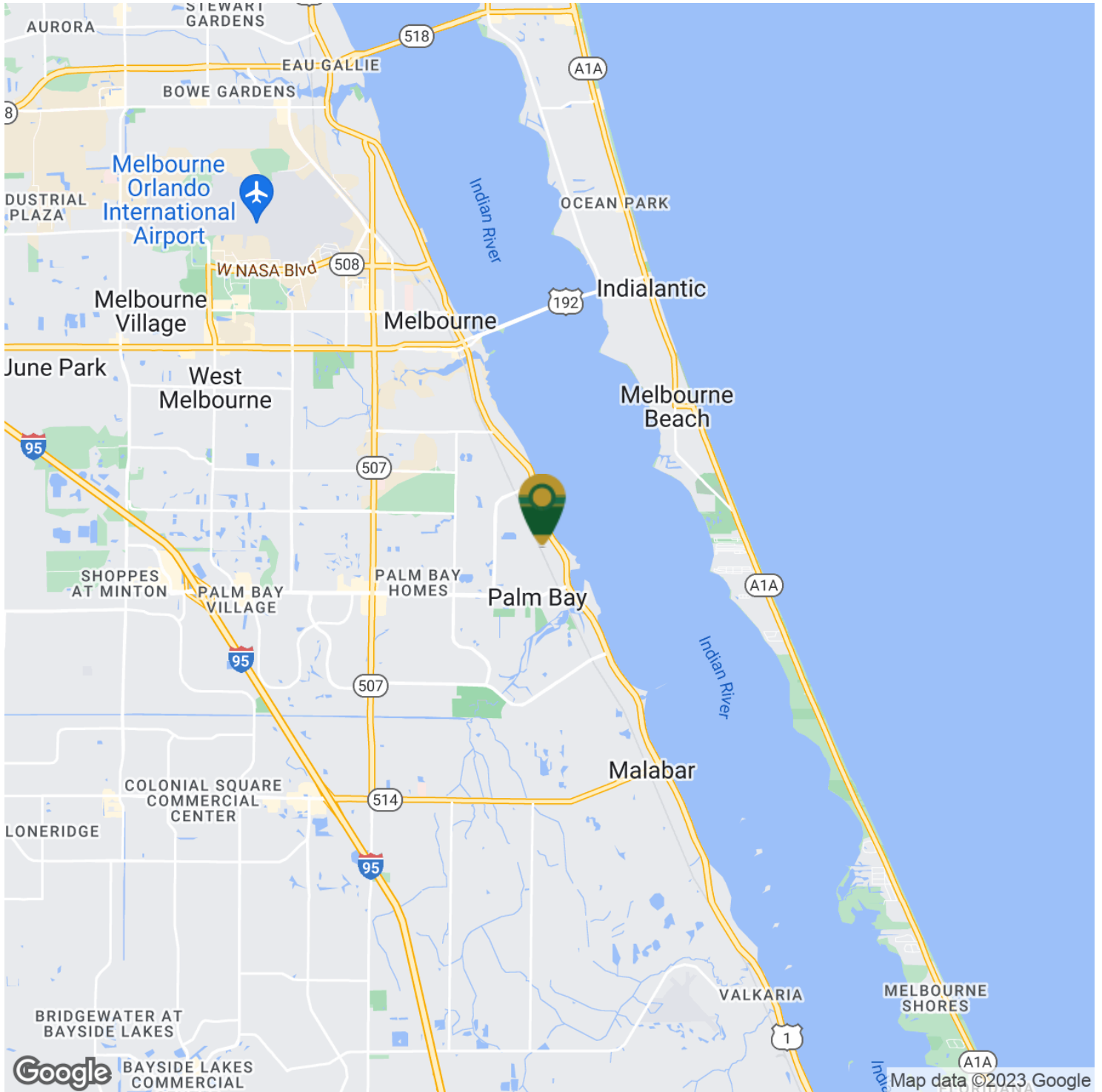
Cell: 321.750.3439

zach@ullianrealty.com

Wabun Street X Cheemaun Avenue

Palm Bay, FL 32905

Location Map



Zachary Ullian

Broker Associate

Cell: 321.750.3439

zach@ullianrealty.com