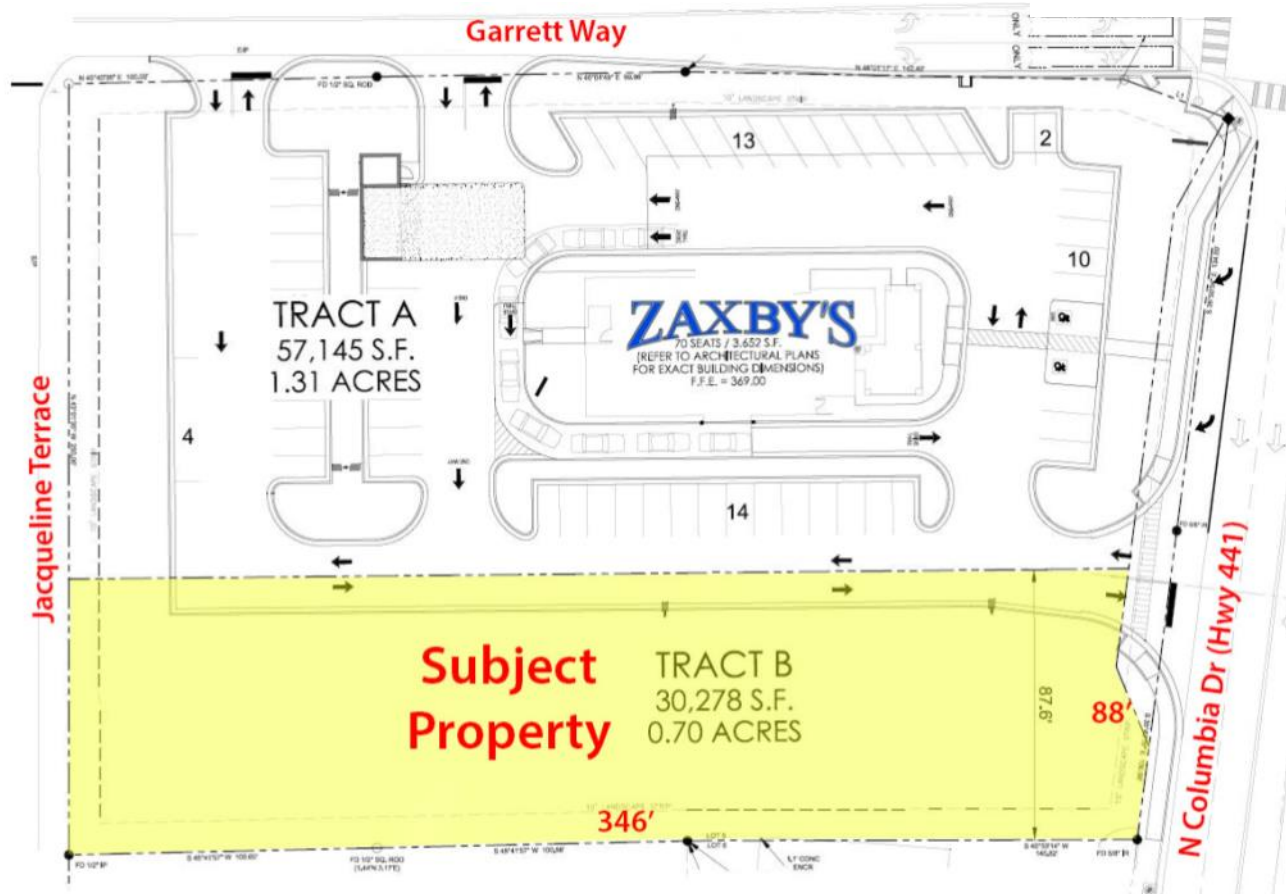


Commercial Lot For Sale

1690 Highway 441 N
Milledgeville, GA 31061



Lot Size: .70 acres
Zoning: Community commercial
Utilities: All Available
Traffic: 20,633 vehicles per day
Depth: 346'
Frontage: 88'

2023 Demographics	1 Mile	3 Mile	5 Mile
Population	2,830	18,094	28,473
Median Age	36.1	30.5	34.2
Avg. HH Income	\$99,245	\$89,358	\$87,815

Notes: This site is located adjacent to Zaxby's. This site has access to Highway 441 (N. Columbia) as well as Garrett Way. It has cross parking with Zaxby's. This site is 2nd parcel south of Garrett on the "Breakfast side" of the highway. Ideal for another restaurant, office, or retail.

Reduced Price: \$425,000 ~~**Sale Price: \$499,000**~~

**FOR MORE
INFORMATION
CONTACT**

Trip Wilhoit, CCIM, ALC
 478-746-9421 (O)
 478-960-4080 (C)
 trip@fickling.com

Patty Burns, CCIM, ALC
 478-746-9421 (O)
 478-951-5100 (C)
 patty@fickling.com

georgiacommercialrealestate.net | commercial.fickling.com

577 Mulberry St, Suite 1100 * P.O. Box 310 * Macon, GA 31202 | Phone (478) 746-9421 | Fax (478) 742-2015
 This information is from resources deemed to be reliable, no warranties or guarantees for accuracy are made by Fickling and Company

Commercial Lot For Sale
1690 Highway 441 N
Milledgeville, GA 31061

AERIAL



**FOR MORE
 INFORMATION
 CONTACT**

Trip Wilhoit, CCIM, ALC
 478-746-9421 (O)
 478-960-4080 (C)
trip@fickling.com

Patty Burns, CCIM, ALC
 478-746-9421 (O)
 478-951-5100 (C)
patty@fickling.com

georgiacommercialrealestate.net | commercial.fickling.com

577 Mulberry St, Suite 1100 * P.O. Box 310 * Macon, GA 31202 | Phone (478) 746-9421 | Fax (478) 742-2015
 This information is from resources deemed to be reliable, no warranties or guarantees for accuracy are made by Fickling and Company