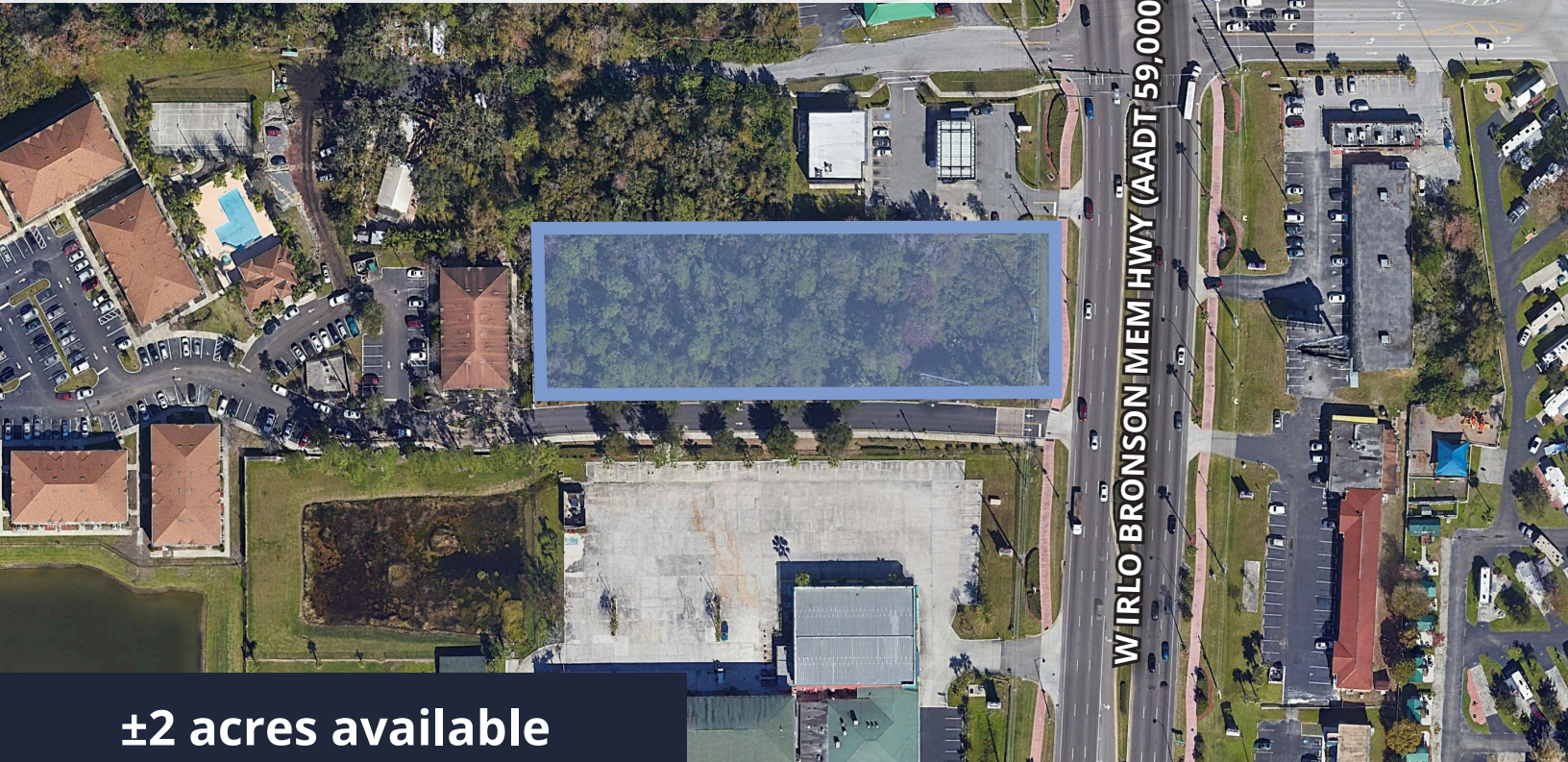


Commercial Land

W Irlo Bronson Memorial Highway | Kissimmee, FL 34746



±2 acres available

Property Stats

Address	W Irlo Bronson Memorial Highway Kissimmee, FL 34746
Folio number	122528000002150000
Land	±2.00 ac
Zoning	Commercial Tourist
Frontage	±145 sf on W Irlo Bronson Mem Hwy

Property Highlights



Prime location minutes from Disney World



Excellent exposure on major road



Near an abundance of restaurants and retail

Property Information

This ±2.00 AC parcel of land provides significant development potential, currently zoned Commercial Tourist. Located under 20 minutes from major tourist attractions such as Disney World and SeaWorld. Located directly on W Irlo Bronson Memorial Highway, the property has quick access to major thoroughfares such as Interstate-4, US 192, and SR 417. Major tourist attractions such as Disney World and SeaWorld are a short drive away providing an ideal location for future development.

Located directly on W Irlo Bronson Memorial Highway, the property has quick access to major thoroughfares such as Interstate-4, US 192, and SR 417. Major tourist attractions such as Disney World and SeaWorld are a short drive away providing an ideal location for future development.

Asking Price: \$1,600,000

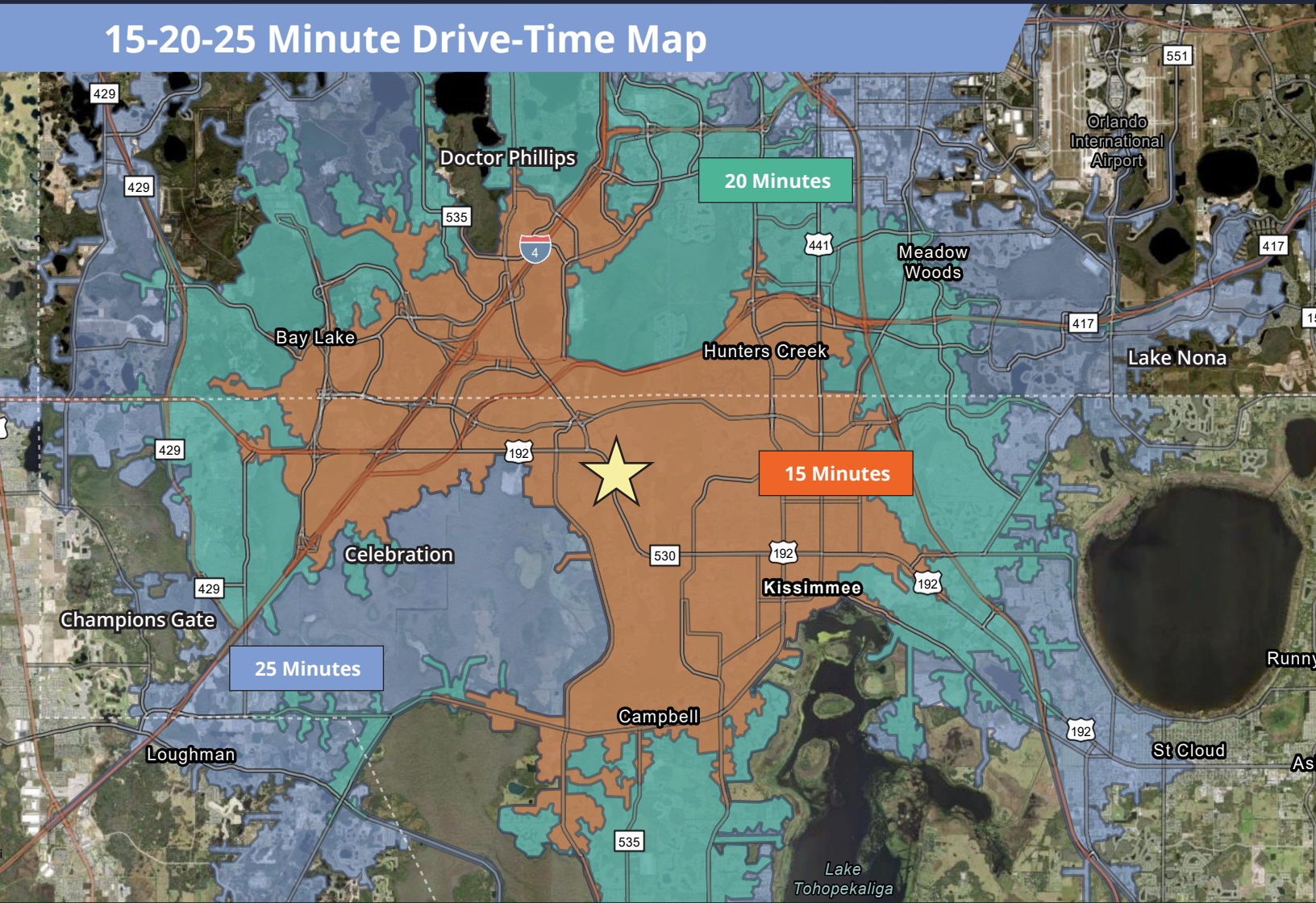
Lease Rate: Negotiable

Gunner Leslie, Vice President
407 440 6642
407 949 2100
gunner.leslie@avisonyoung.com

Nathan Eissler, CCIM, SIOR, Principal
407 440 6658
407 342 7494
nathan.eissler@avisonyoung.com

**AVISON
YOUNG**

15-20-25 Minute Drive-Time Map



Drive Time Demographics (20 Minutes)



For further
information

Gunner Leslie
Vice President
+1 407 440 6642

Nathan Eissler, CCIM, SIOR
Principal
+1 407 440 6658

**AVISON
YOUNG**

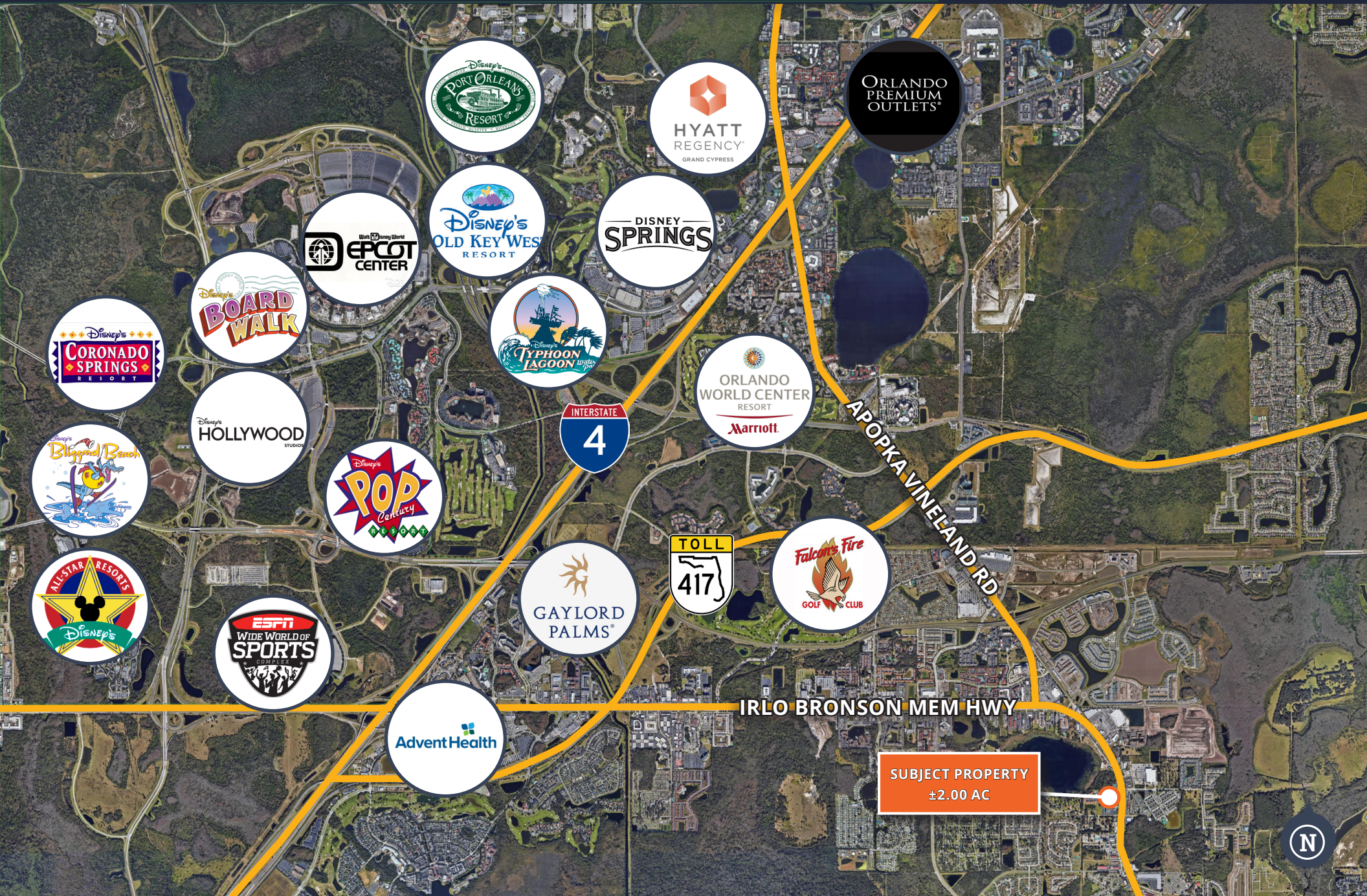
Proximity Map

W Irlo Bronson Mem Hwy
Kissimmee, FL 34744



Surrounding Points of Interest

W Irlo Bronson Mem Hwy
Kissimmee, FL 34744



If you would like more information
on this offering please get in touch.

**AVISON
YOUNG**

Broker Team

Gunner Leslie, Vice President

407 440 6642

407 949 2100

gunner.leslie@avisonyoung.com

Nathan Eissler, CCIM, SIOR, Principal

407 440 6658

407 342 7494

nathan.eissler@avisonyoung.com

Visit us online

avisonyoung.com

© 2023 Avison Young – Florida, LLC. All rights reserved.

E. & O.E.: The information contained herein was obtained from sources which we deem reliable and, while thought to be correct, is not guaranteed by Avison Young.

135 W. Central Boulevard, Suite 700 | Orlando, Florida 32801 | 407 440 6642

**AVISON
YOUNG**
