

Commercial Land Opportunity

200 S. Lake Destiny Drive | Orlando, FL 32810



Property Information

Land AC	±3.70 ac
Land SF	±161,006 sf
Zoning	C-1, Town of Eatonville
Utilities	City Water - Duke Energy

Sale Price: \$2,400,000 (\$648,648/ac)

Property Highlights

This offering is a ±3.70 acre parcel of vacant commercial land with significant development potential. The Property offers incoming owners the flexibility to pursue a traditional retail deal or potential for office/mixed use.

Excellent Accessibility - With close proximity to Interstate-4, this property has quick access to all major Central Florida thoroughfares. Positioned 10 minutes North of Downtown Orlando and 20 minutes South of Sanford.

Booming Metropolitan Area - Central Florida has emerged as one of the most dynamic economic markets in the Southeast. Driven by steady population growth, new developments breaking ground and lower taxes, this region continues to attract new residents with its unmatched quality of life.

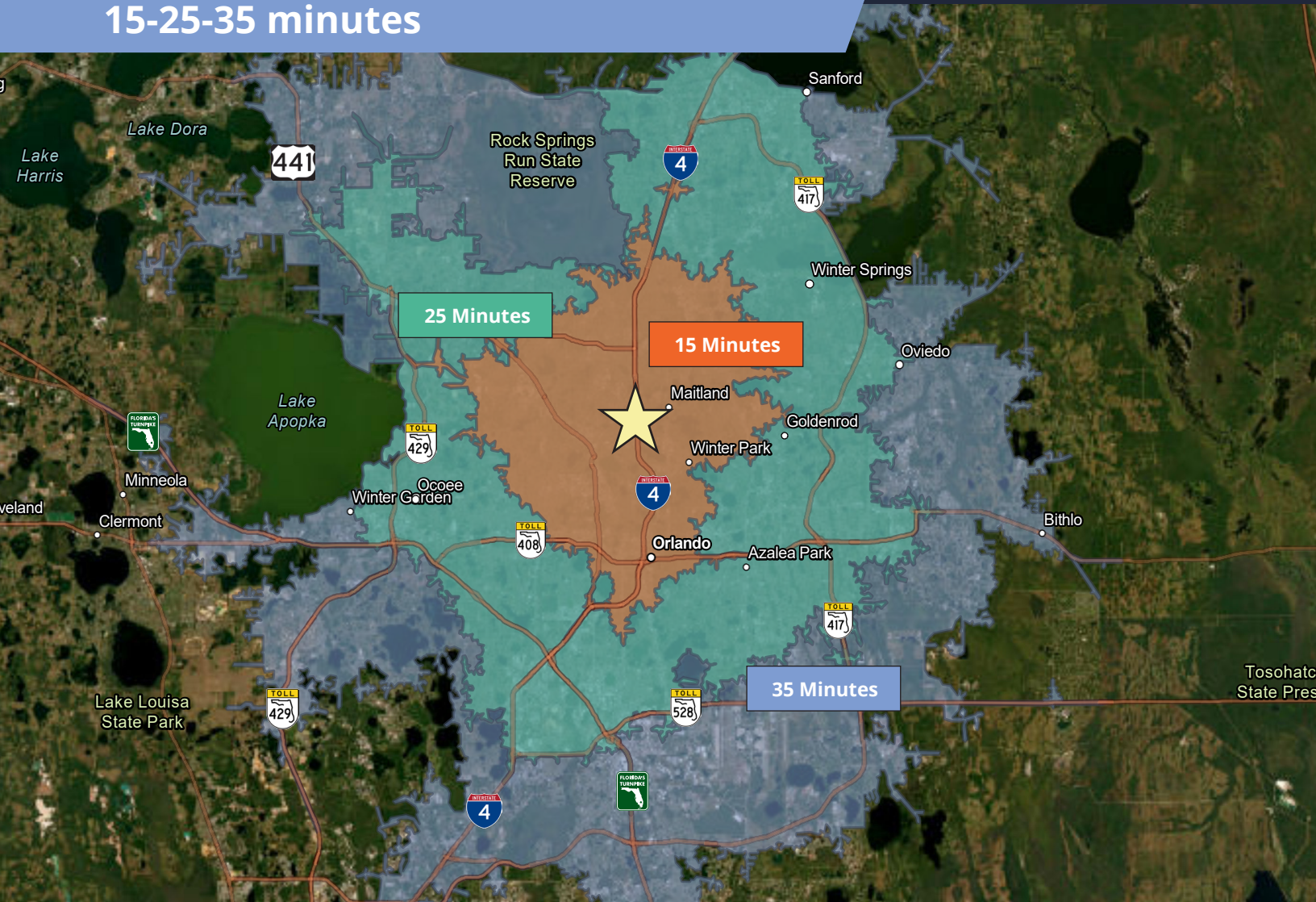
**For further
information**

Gunner Leslie
Vice President
+1 407 949 2100
gunner.leslie@avisonyoung.com

Nathan Eissler, CCIM, SIOR
Principal
+1 407 440 6658
nathan.eissler@avisonyoung.com

**AVISON
YOUNG**

15-25-35 minutes



Drive Time Demographics (15 Minutes)



411,229

Population



172,637

Households



\$96,346

Average HH income



2.34

Average HH size



419,602

Employees

**For further
information**

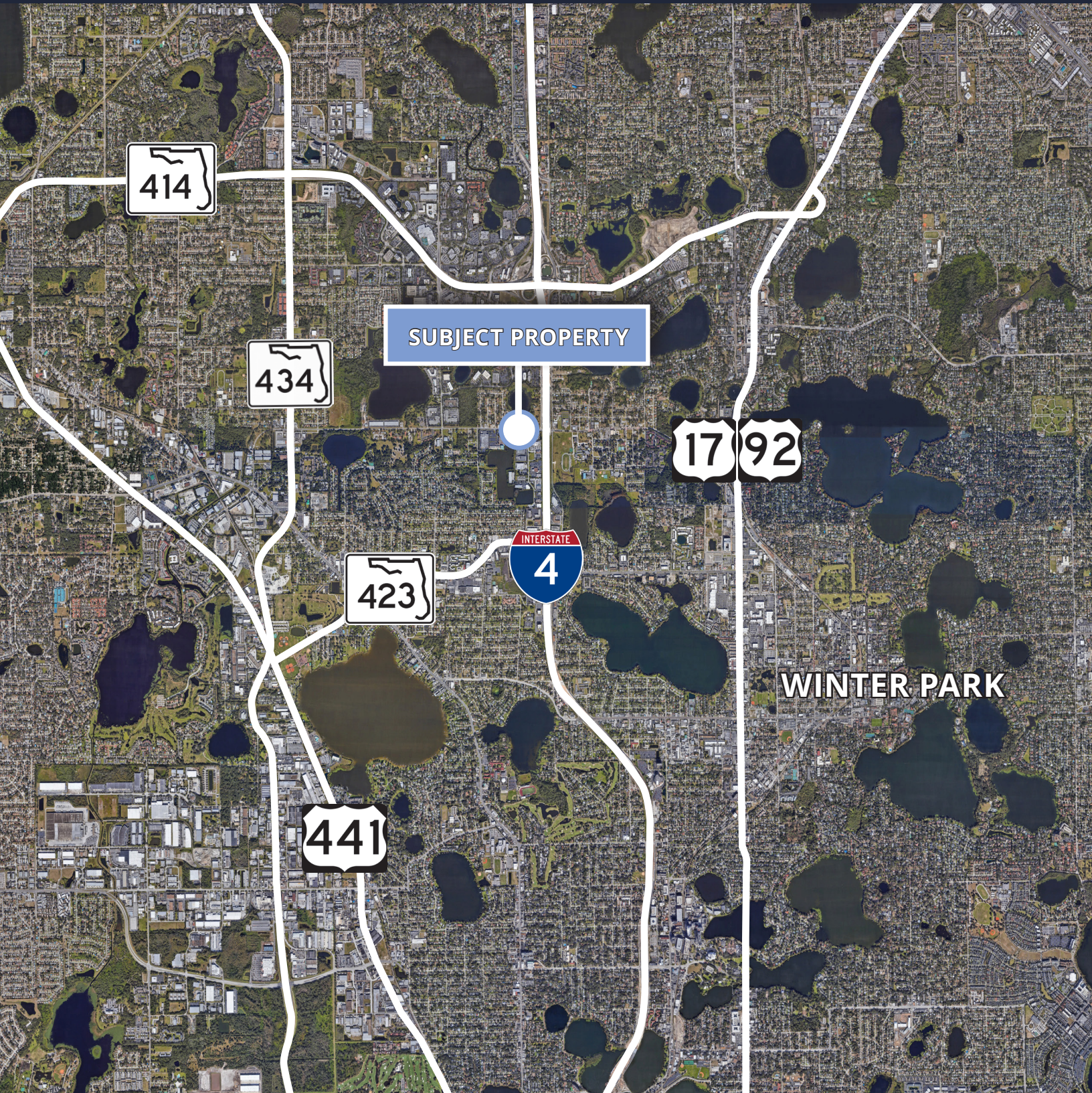
Gunner Leslie
Vice President
+1 407 949 2100
gunner.leslie@avisonyoung.com

Nathan Eissler, CCIM, SIOR
Principal
+1 407 440 6658
nathan.eissler@avisonyoung.com

**AVISON
YOUNG**

Commercial Land Opportunity

200 S. Lake Destiny Dr.
Orlando, FL 32810



**For further
information**

Gunner Leslie
Vice President
+1 407 949 2100
gunner.leslie@avisonyoung.com

Nathan Eissler, CCIM, SIOR
Principal
+1 407 440 6658
nathan.eissler@avisonyoung.com

**AVISON
YOUNG**