

SURVEY FOR
BRITT ANTHONY GILMER
 PROPERTY IN LAND LOT 216,
 6th DISTRICT, 3rd SECTION,
 BARTOW COUNTY, GEORGIA

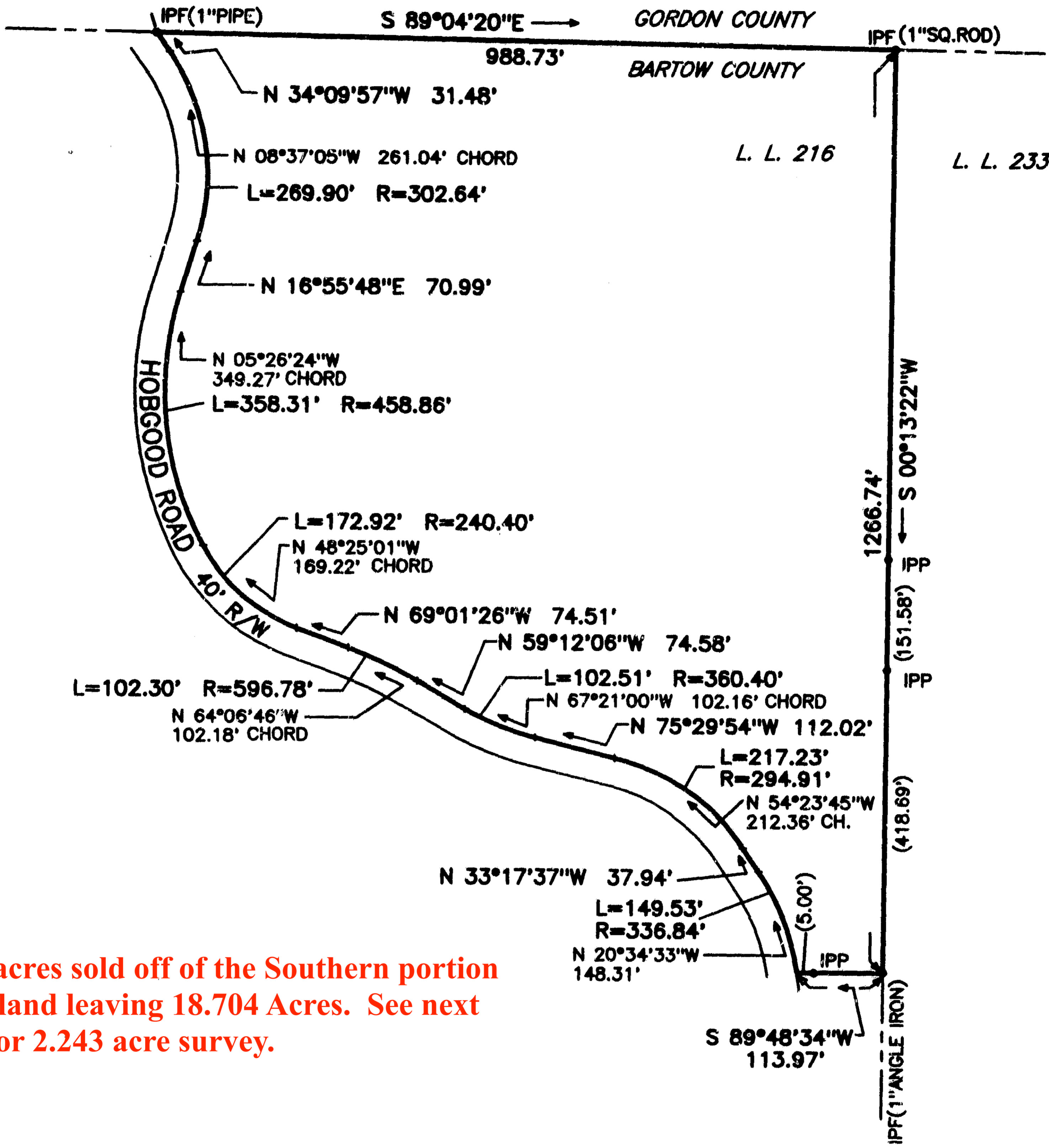
TOTAL AREA = 20.947 ACRES

GEORGIA, BARTOW COUNTY
 CLERK'S OFFICE SUPERIOR COURT

Filed for record this 10 day of
May 2002 at 9:15 o'clock A. M.

Recorded in Plat record No. 54
 Page 129 this 13 day of

May 2002
 GARY BELL, Clerk



2.243 acres sold off of the Southern portion of the land leaving 18.704 Acres. See next page for 2.243 acre survey.

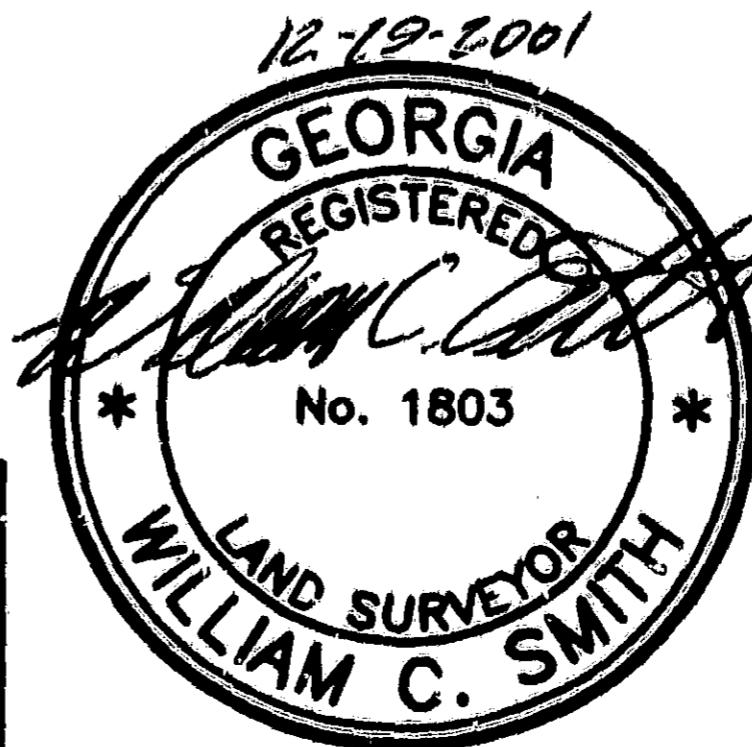
FIELD TRAVERSE:
 CLOSURE; ONE FOOT IN 20,000 FEET
 USING A LIETZ SET 3.
 ANGULAR ERROR; 0°00'09" PER ANGLE
 POINT USING A LIETZ SET 3.
 ADJUSTED; USING THE COMPASS RULE.

3413-1.CRD.PL1
 NOTE: IRON PINS ARE (1/2" RE-BAR)
 EXCEPT AS SHOWN.

PLAT CLOSURE;
 ONE FOOT IN
 505,000 FEET.

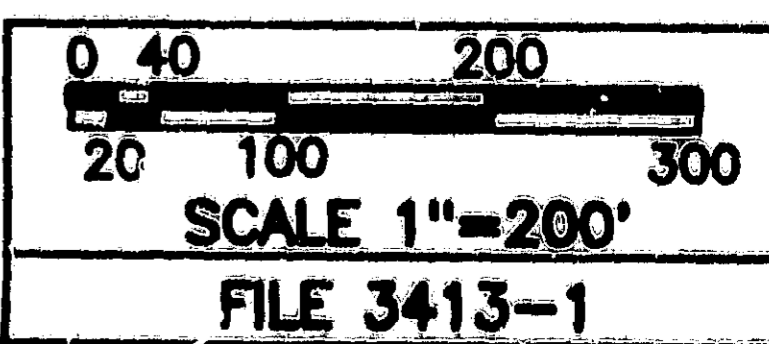
SMITH & SMITH LAND SURVEYORS, P.C.
 2 SOUTH AVENUE, CARTERSVILLE, GA. 30120
 PHONE 770-382-0457

REGISTERED LAND SURVEYOR No. 1803



DECEMBER 19, 2001

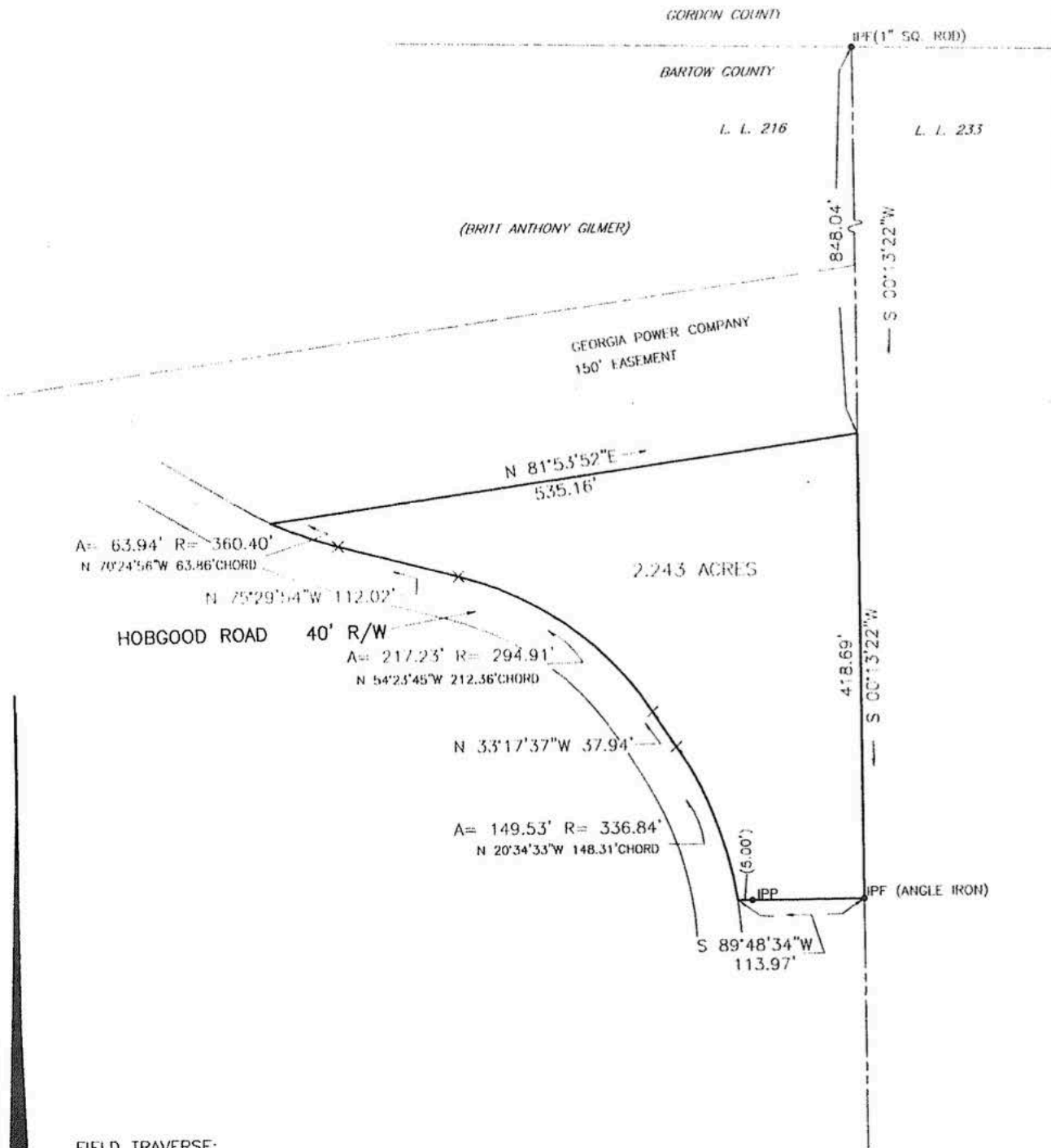
R/W — RIGHT OF WAY	R — RADIUS	LP — LIGHT POLE
IPP — IRON PIN PLACED	- X - X - FENCE	
IPF — IRON PIN FOUND	--- LAND LOT LINE	
CM — CONCRETE MARKER	⊙ — CENTER LINE	
CH. — CHORD	— W — POWER LINE	
L OR A — LENGTH OF CURVE	PP — POWER POLE	



MAG. NORTH

SURVEY FOR
BRYAN T. GILMER
 PROPERTY IN LAND LOT 216
 6th DISTRICT, 3rd SECTION
 BARTOW COUNTY, GEORGIA

GEORGIA, BARTOW COUNTY
 CLERKS OFFICE SUPERIOR COURT
 Filed for record this 10 day of Aug 2005 at 10:15 o'clock A.M.
 Recorded in Plat record No. 61
 Page 42 this Aug 2005 day of
 GARY BELI, Clerk *SMC*



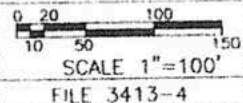
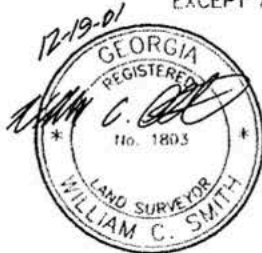
FIELD TRAVERSE:
 CLOSURE; ONE FOOT IN 20,000 FEET
 USING A LIETZ SET 3.
 ANGULAR ERROR; 0'00"09"PER ANGLE
 POINT USING A LIETZ SET 3.
 ADJUSTED; USING THE COMPASS RULE.

SMITH & SMITH LAND SURVEYORS, P.C.
 2 SOUTH AVENUE, CARTERSVILLE, GA. 30120
 PHONE 770-382-0457

REGISTERED LAND SURVEYOR No. 1803

3413.CRD 3413-4.DWG
 NOTE: IRON PINS ARE (1/2"RE-BAR)
 EXCEPT AS SHOWN.

PLAT CLOSURE;
 ONE FOOT IN
 140,000 FEET.
 DECEMBER 19, 2001



R/W	RIGHT OF WAY	R	RADIUS LP - LIGHT POLE
IPP	IRON PIN PLACED	-X-X-	FENCE
IPF	IRON PIN FOUND	---	LAND LOT LINE
CM	CONCRETE MARKER	⊙	CENTER LINE
CH	CHORD	---	POWER LINE
L OR A	LENGTH OF CURVE	PP	POWER POLE

MAG. NORTH

WCS