

Vacant Light Industrial Land

Kirby Circle, Palm Bay, FL 32905

Seller Financing Available / Centrally Located / City Water & Sewer



OFFERING SUMMARY

Sale Price: \$345,000

Acreage: 1.28 Acres

Zoning: City of Palm Bay Light Industrial (LI)

BCPA Account #: 2826116

PROPERTY OVERVIEW

Est. 226' Frontage on Kirby Circle

Depth Ranges 235' - 265' +/-

Nearby Utilities Include City Water/Sewer & FPL Electric

LI Zoning: Warehousing, Light Manufct, Outdoor Storage, Automotive & More!

2022 Property Taxes were \$1,175.47

Seller Will Consider Financing Subject to Contract Terms & Buyer Credit

LOCATION OVERVIEW

Located in the heart of Palm Bay, just off of Robert J. Conlan Boulevard. Close proximity to US1, Palm Bay Road & Interstate 95 which makes this property easily accessible to the surrounding Restaurants, Childcare, Residential & Beaches that the area has to offer. Surrounding neighbors include L3Harris, Raytheon, Leonardo DRS & UPS to name a few. The Melbourne International Airport is approximately 15-minutes away. Make this the future home for your business today!

Zachary Ullian

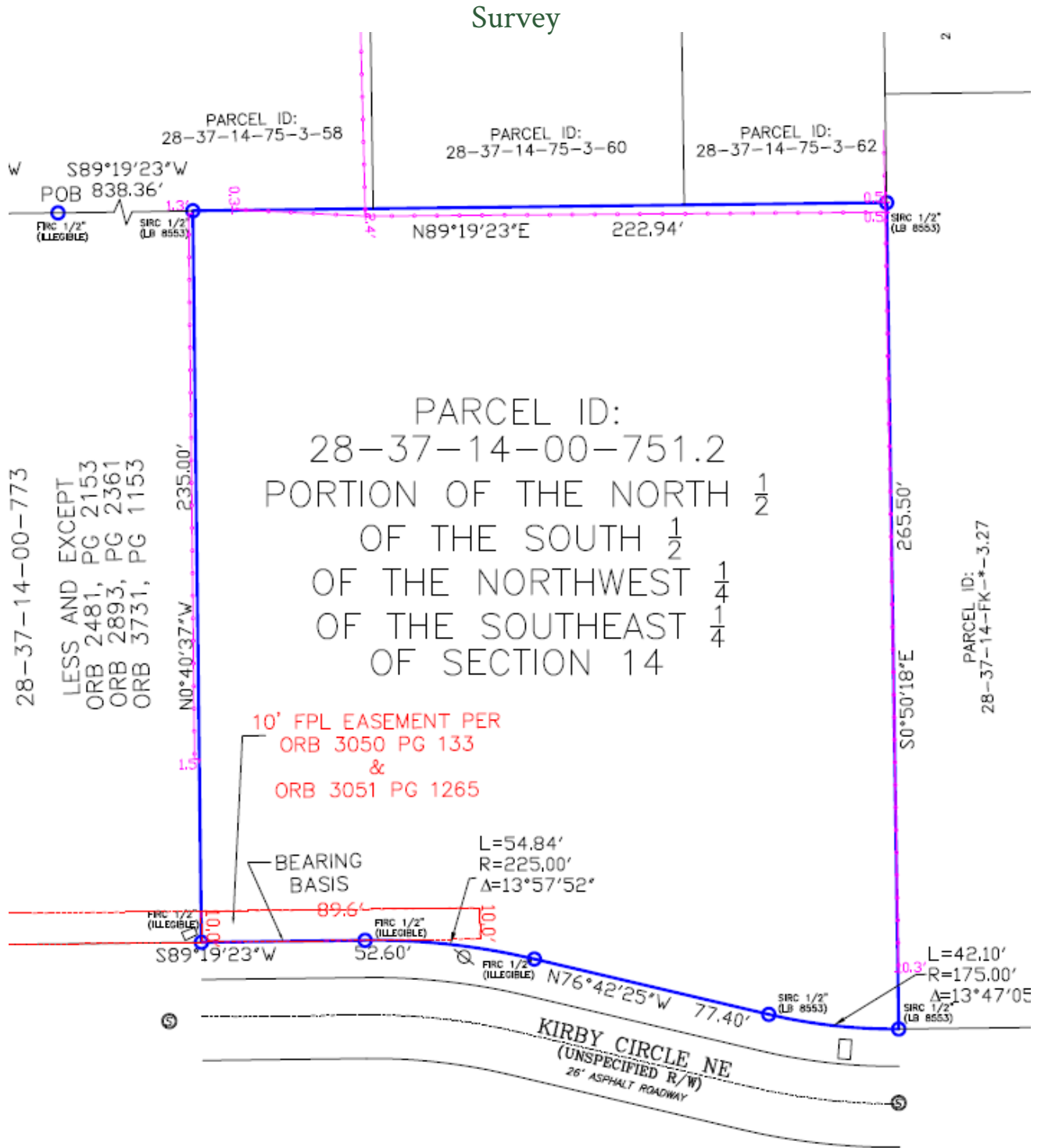
Broker Associate

Cell: 321.750.3439

zach@ullianrealty.com

Vacant Light Industrial Land

Kirby Circle, Palm Bay, FL 32905



Zachary Ullian

Broker Associate

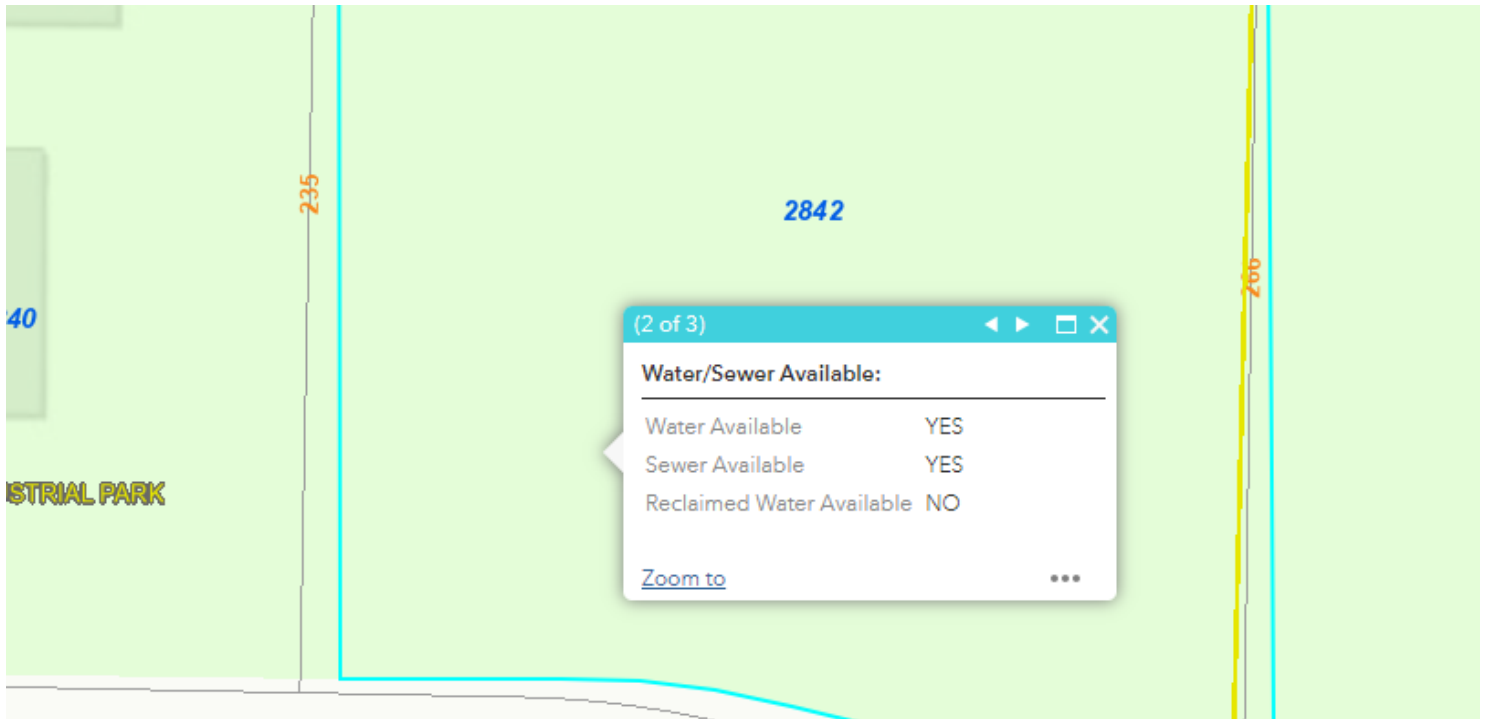
Cell: 321.750.3439

zach@ullianrealty.com

Vacant Light Industrial Land

Kirby Circle, Palm Bay, FL 32905

Ground Level Photo & City of Palm Bay Utility Map



Zachary Ullian

Broker Associate

Cell: 321.750.3439

zach@ullianrealty.com

Vacant Light Industrial Land

Kirby Circle, Palm Bay, FL 32905

Surrounding Businesses



Zachary Ullian

Broker Associate

Cell: 321.750.3439

zach@ullianrealty.com