

**FOR SALE  
OR  
LEASE**

**CLASS A OFFICE/INDUSTRIAL**  
CHRISTOPHER C FORD INDUSTRIAL PARK



**8508 JUSTICE PLACE, GROVELAND, FL**



**PROPERTY HIGHLIGHTS**

- **FOR SALE: 12,700 SF CLASS A Office and Industrial Multi-Tenant Commercial Building**
- **FOR LEASE: 5,000 SF of Class A Office Space, 2 levels, 2,500 SF per level, with elevator**
- **FOR LEASE: 7,700 SF of Industrial Space: 2,500 SF Finished, 5,200 SF Shell Space**
- **Owner Occupied: 2,500 SF Office, 2,500 SF Warehouse**
- **M-1 Zoning                      Land size: 1.93 Acres**
- **Close to: FL Turnpike, US Hwy 27, I-75, and I-4**
- **Lease Rate: Office \$16, NNN, Warehouse: \$5.50 - \$7, NNN**
- **Purchase Price:                      \$1,467,000**

**CONTACT**

**Scott Garrett**  
**407.733.8159 mobile**  
**Scott@ResultsREPartners.com**

Results Real Estate Partners, LLC  
*Licensed Real Estate Brokers*  
108 Commerce Street, Suite 200  
Lake Mary, Florida 32746

407.647.0200 *main*  
407.647.0205 *fax*

[www.ResultsREPartners.com](http://www.ResultsREPartners.com)

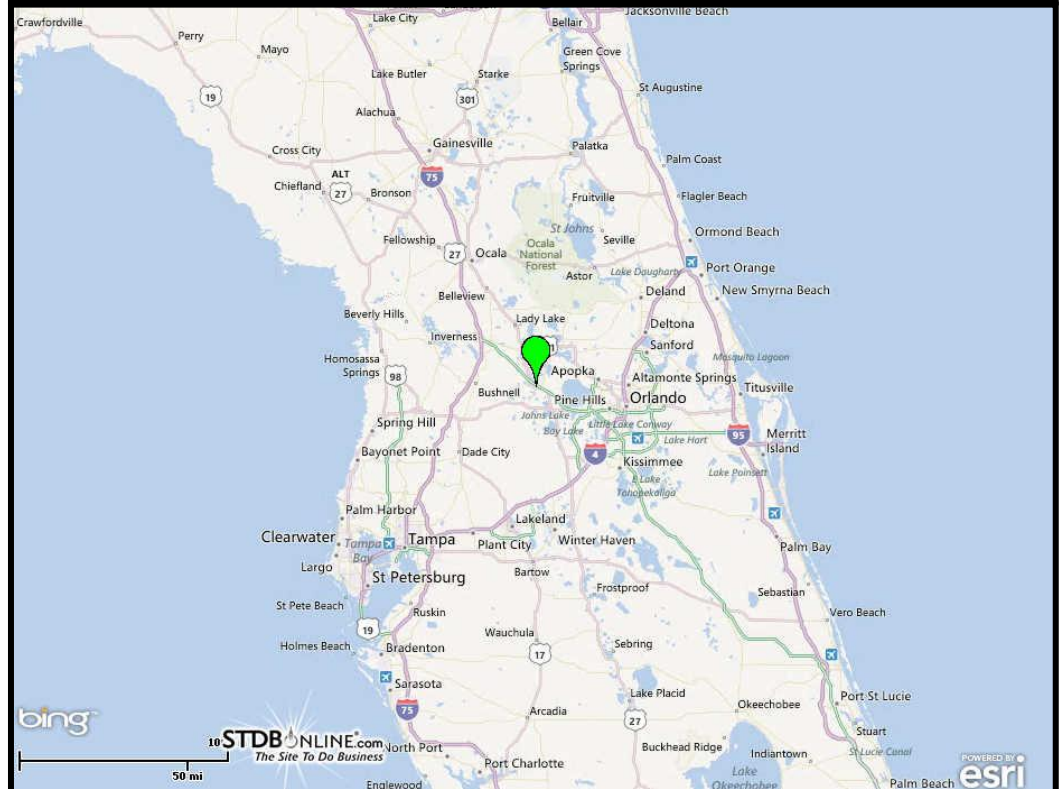
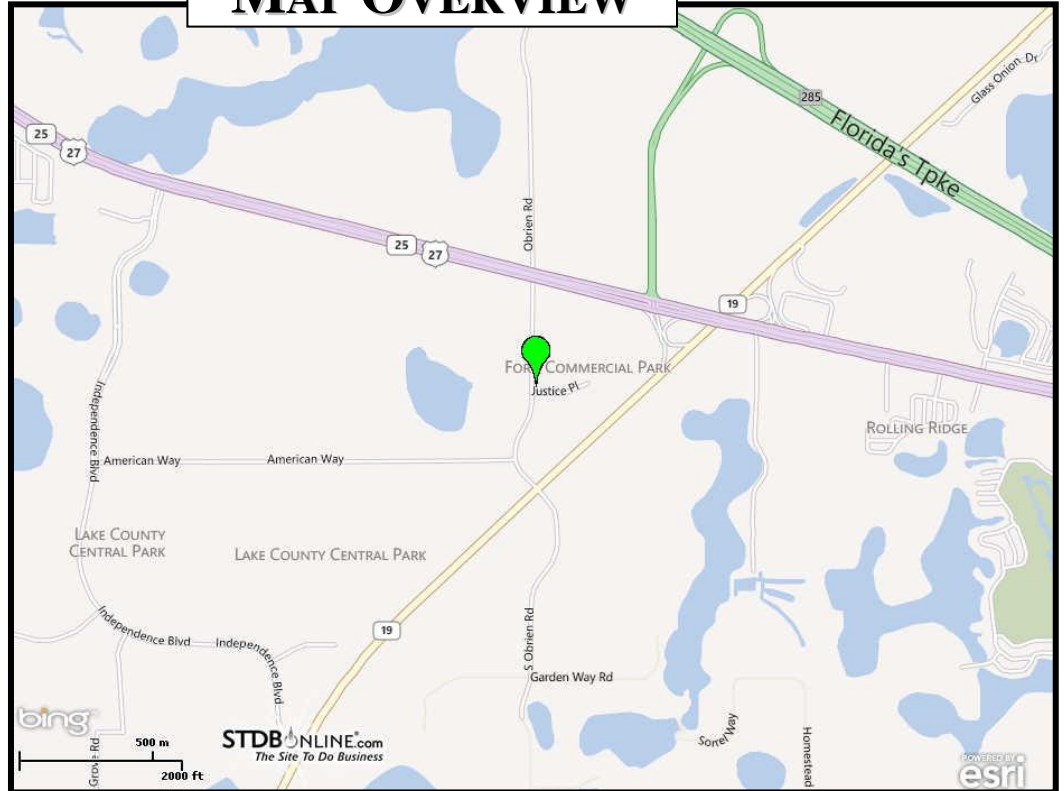
This information is from sources we deem reliable and is subject to prior sale, lease, withdrawal without notice, or change in prices, rates, or conditions. No representation is made as to the accuracy of any information furnished.

**FOR SALE  
OR  
LEASE**

**CLASS A OFFICE/INDUSTRIAL  
CHRISTOPHER C FORD INDUSTRIAL PARK**



**MAP OVERVIEW**



**CONTACT**

**Scott Garrett**  
407.733.8159 *mobile*  
Scott@ResultsREPartners.com

Results Real Estate Partners, LLC  
*Licensed Real Estate Brokers*  
108 Commerce Street, Suite 200  
Lake Mary, Florida 32746

407.647.0200 *main*  
407.647.0205 *fax*

www.ResultsREPartners.com

This information is from sources we deem reliable and is subject to prior sale, lease, withdrawal without notice, or change in prices, rates, or conditions. No representation is made as to the accuracy of any information furnished.

**FOR SALE  
OR  
LEASE**

**CLASS A OFFICE/INDUSTRIAL**  
**CHRISTOPHER C FORD INDUSTRIAL PARK**



**AERIAL OVERVIEW**



**CONTACT**

**Scott Garrett**  
**407.733.8159 mobile**  
**Scott@ResultsREPartners.com**

Results Real Estate Partners, LLC  
*Licensed Real Estate Brokers*  
108 Commerce Street, Suite 200  
Lake Mary, Florida 32746

407.647.0200 *main*  
407.647.0205 *fax*

[www.ResultsREPartners.com](http://www.ResultsREPartners.com)



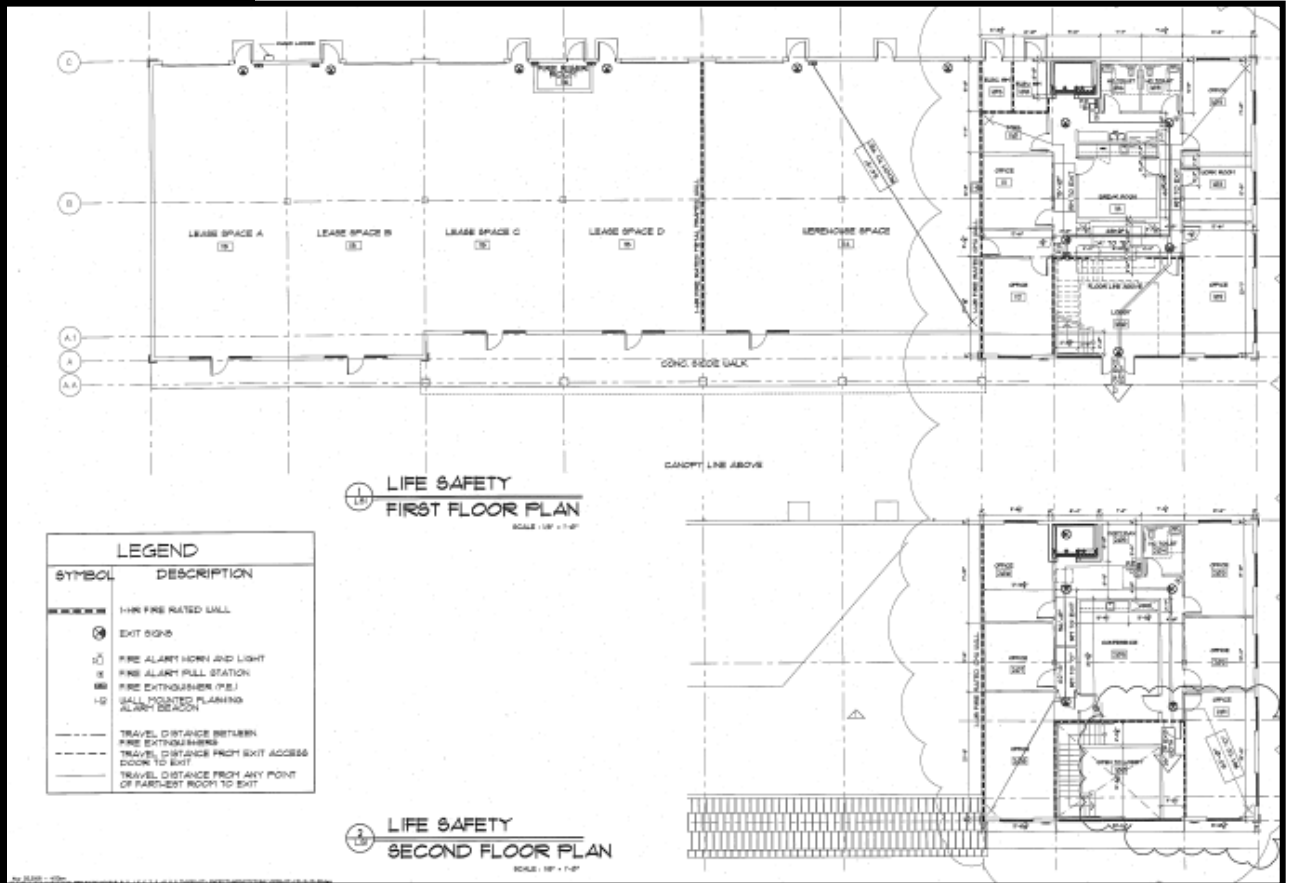
This information is from sources we deem reliable and is subject to prior sale, lease, withdrawal without notice, or change in prices, rates, or conditions. No representation is made as to the accuracy of any information furnished.

**FOR SALE  
OR  
LEASE**

**CLASS A OFFICE/INDUSTRIAL  
CHRISTOPHER C FORD INDUSTRIAL PARK**



**8508 JUSTICE PLACE, GROVELAND, FL**



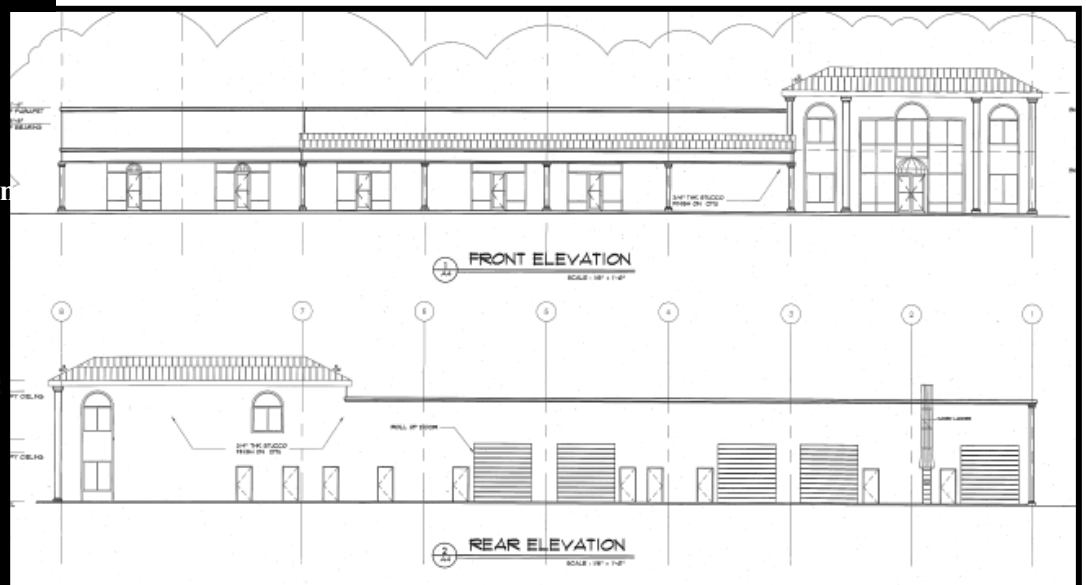
**CONTACT**

**Scott Garrett**  
407.733.8159 mobile  
Scott@ResultsREPartners.com

Results Real Estate Partners, LLC  
Licensed Real Estate Brokers  
108 Commerce Street, Suite 200  
Lake Mary, Florida 32746

407.647.0200 main  
407.647.0205 fax

www.ResultsREPartners.com



This information is from sources we deem reliable and is subject to prior sale, lease, withdrawal without notice, or change in prices, rates, or conditions. No representation is made as to the accuracy of any information furnished.