



Multipurpose Building with land in San Sebastián

Bo. Guatemala PR-111 Km. Hm. 16
San Sebastián, PR

Exclusively listed by JLL

Overview

SIZE ~9,511 SF Building
~3.86 acre Land

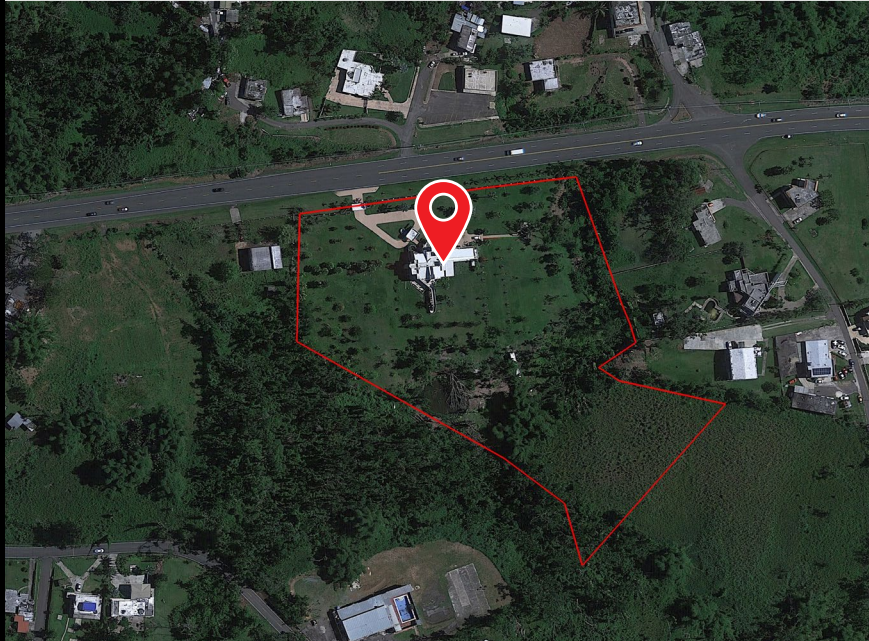
LOCATION [18.352512, -67.015641](#)

PRODUCT TYPE Multipurpose

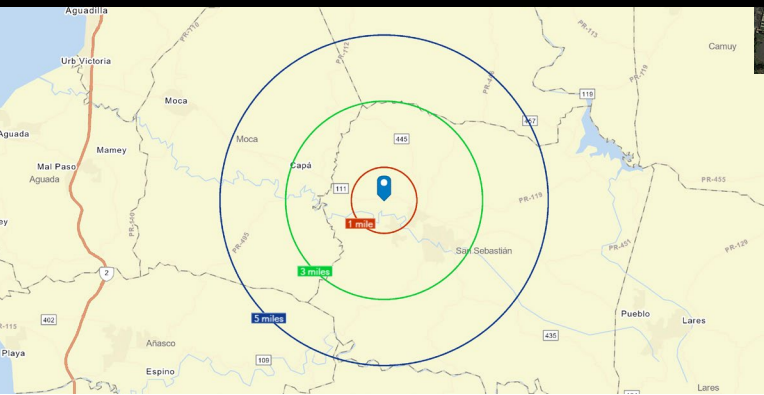
ZONING UR

CADASTER 099-068-505-08
099-000-009-10

This property was originally built for residential use and can still function as a residential property; it has 5 bedrooms each with their private bathroom, two kitchens, and a garage for 4 vehicles. However, the property is located on the high traffic road PR 111 and could be redesigned for commercial use. Reconfiguration possible for example into a medical center or into a short term rental destination. The building has 9,511 SF +-, a large elevator, and 3.86 acre +- developable land.



FOR SALE



Tom Provost
Transaction Advisor

Lic. # C-22607
Puerto Rico
+1 787 221 6660
+1 787 777 5800
tom.provost@jll.com

Andy Carlson
Market Lead | JLL PR

Lic. # C-17494
Puerto Rico
+1 727 403 2503
+1 787 777 5800
andy.carlson@jll.com

JLL Puerto Rico Realty & Co., S. En C. | License Number: E-297 | +1 787 777 5800 | 27 González Giusti Street Suite 101, Guaynabo PR 00968 | www.us.jll.com/puerto-rico

Although information has been obtained from sources deemed reliable, JLL does not make any guarantees, warranties or representations, express or implied, as to the completeness or accuracy as to the information contained herein. Any projections, opinions, assumptions or estimates used are for example only. There may be differences between projected and actual results, and those differences may be material. JLL does not accept any liability for any loss or damage suffered by any party resulting from reliance on this information. If the recipient of this information has signed a confidentiality agreement with JLL regarding this matter, this information is subject to the terms of that agreement. ©2020. Jones Lang LaSalle IP, Inc. All rights reserved.



Commercial Building in San Sebastián

Bo. Guatemala PR-111 Km. Hm. 16
San Sebastián, PR

Location highlights

The property is located on PR-111, in a commercial area with a daily traffic count of 17,834. It is located within 1 mile of the Toyota, Kia and Hyundai dealerships and the Plaza San Sebastian Shopping Center. Major retailers of the shopping center are MeSalve, Bargain City, Always 99, among others. It is also located within the vicinity of the former Sears building, a space that is reopening with a new major retailer.

Demographics

	1-mile	3-mile	5-mile
Population	1,903	22,624	41,037
Households	728	8,109	14,571
Purchasing Power*	\$13,929	\$11,895	\$11,607

*Per capita

Source: Esri, 2020

