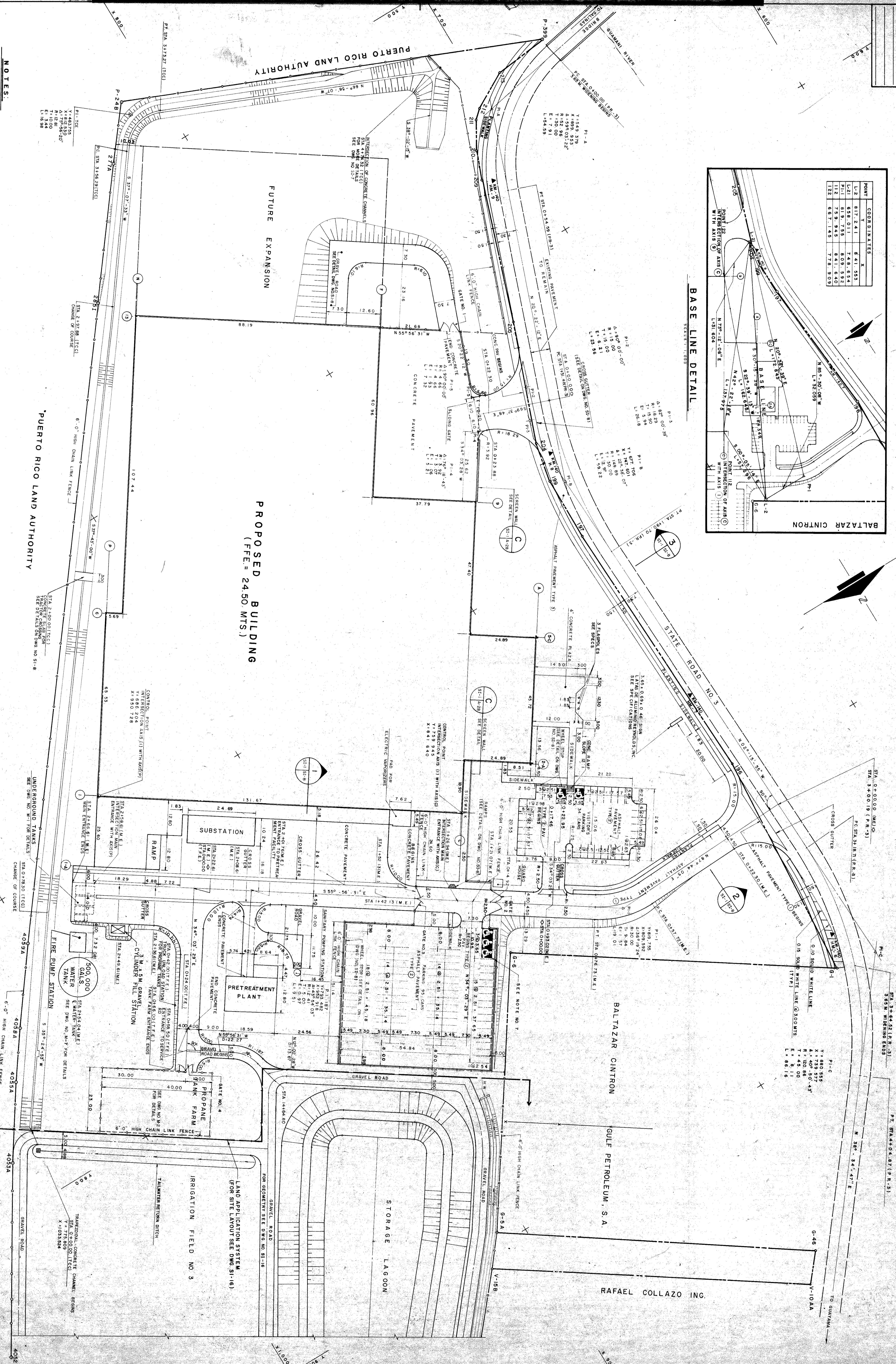
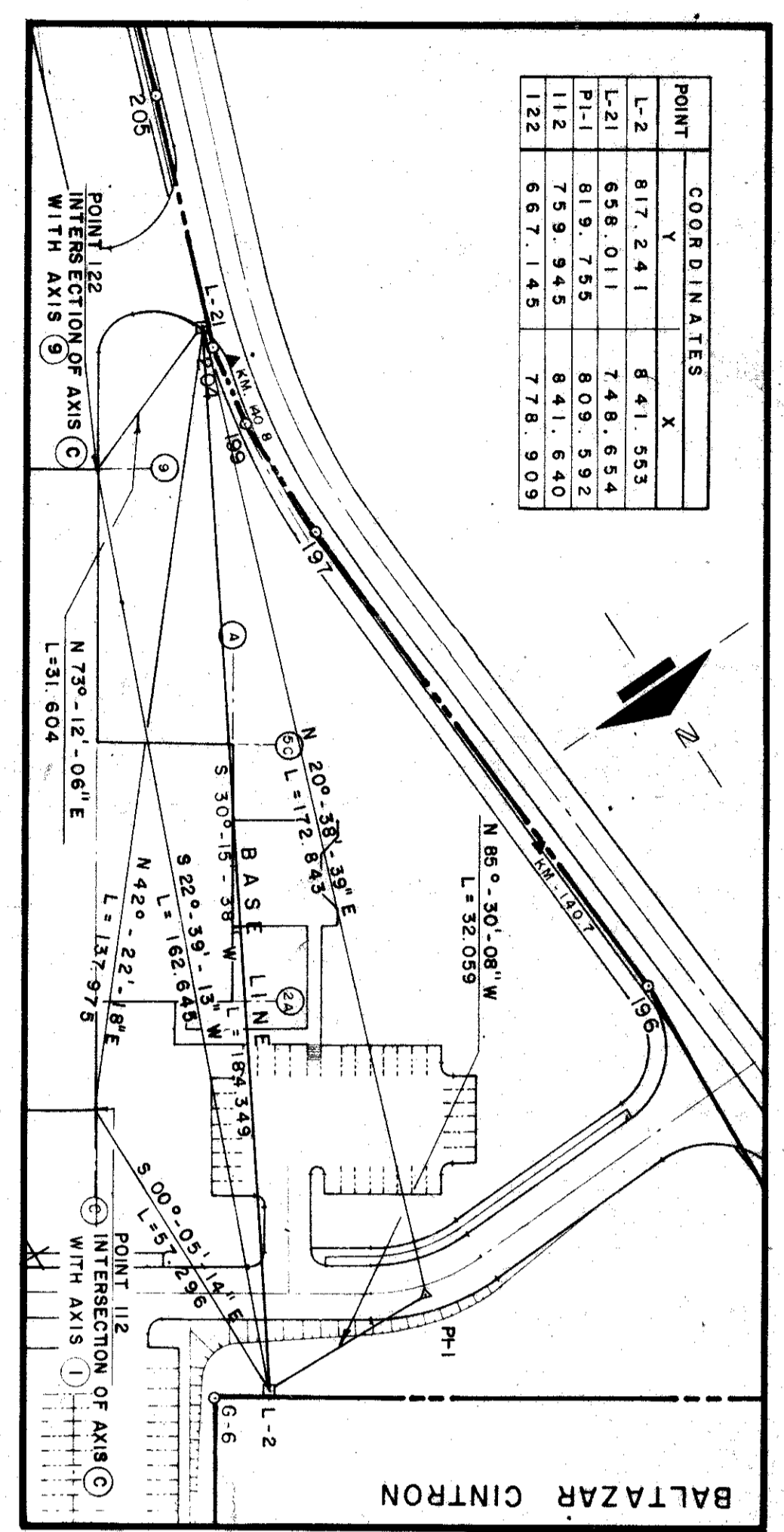


| POINT | COORDINATES | X | Y |
|-------|-------------|---------|---|
| L-1 | 617.241 | 841.553 | |
| L-2 | 638.011 | 748.634 | |
| L-3 | 619.755 | 809.592 | |
| L-4 | 789.945 | 941.860 | |
| L-5 | 871.145 | 778.953 | |



- NOTES:**
1. BUILDING DIMENSIONS SHOWN ARE TO CENTER OF AXIS.
 2. ALL DIMENSIONS AND CENTER MARKERS ON STATE ROAD NO. 3 ARE TO BE MEASURED IN CROSS-SECTION PLANNING VIEW.
 3. ALL DISTANCES ARE EXPRESSED IN METERS.
 4. FOR DETAILS OF CURBS, SIDEWALK AND PAVEMENT SEE DWG. SI-8.
 5. CONCRETE PAVEMENT WITH CONSTRUCTION JOINTS AND CURB PLAN SHOWING PAVEMENT WITH CONSTRUCTION JOINTS AND CURB PLAN SEE DWG. SI-2.
 6. FOR GATES AND CHAIN LINK FENCE SEE DWG. SI-24.
 7. PARKING SPACES PROVIDED FOR SMALL VEHICLES SHALL BE APPROXIMATELY IDENTIFIED WITH A VISIBLE SIGN.

LEBRON SANTOFRENZO & FUENTES

ENGINEERING ARCHITECTURAL AND PLANNING CONSULTANTS

79-576-30

NO. 100, P.O. BOX 141, CAROLINA, VIEQUES, SAN JUAN, PUERTO RICO 00982

AMERICAN AND CANADIAN STREETS, LANHAM, MD. AND PHOENIX, ARIZONA, U.S.A.

TELEPHONE (787) 283-2416

DATE: 10/10/78

PROJECT NO. 79-576-30

DRAWING NO. SI-1

SCALE: 1:500

REYNOLDS METALS CO. SITE PLAN

E 26-00-8024