

0 Prairie Street

Crystal Lake, IL 60014

For Sale

MLS #11893250

LAND



INDUSTRIAL LAND 2.77 ACRES

\$240,115 (\$1.99 PSF)

Industrial Land 2.77 Acres (10 Lots)

One of a few industrial building sites in Crystal Lake. Adjacent to the former Autotrol Corp. building.

City water and sewer on Prairie Street. Taxes are being appealed as this property is assessed (all 10 PIN's) at \$416,000 (\$3.44 psf).

Priced at only \$1.99 psf due to the need to remove the dense trees.

Specifications

Description:	Land - Industrial
Land Size:	2.77 Acres
Topography:	Wooded
Environmental Status:	TBA
Utilities:	to Site
Sewer/Water:	City
Frontage Dimensions:	305'
Zoning:	M
Taxes:	\$13.318 (2022)
PIN #:	14-33-376-011,012,013,014,019,020,021,022,023 14-33-379-012

[CLICK HERE TO VIEW OUR WEBSITE](#)

No warranty or representation is made as to the accuracy of the foregoing information. Terms of sale or lease and availability are subject to change or withdrawal without notice. This document is for information purposes only. No offer of sub-agency is being made.

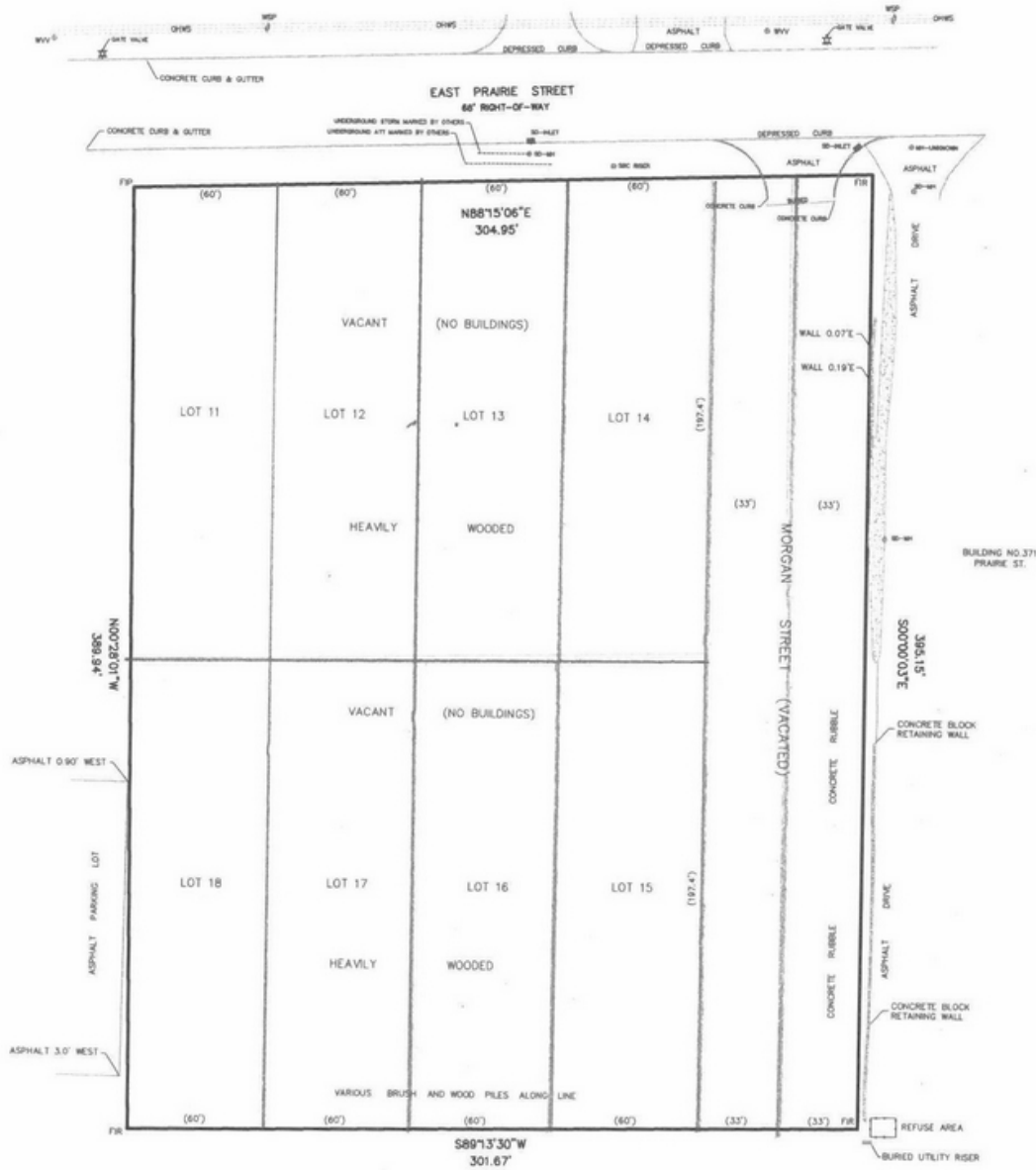


www.PremierCommercialRealty.com | 847.854.2300 | 9225 S. Route 31, Lake in the Hills, IL 60156

Senior Broker
Bruce Kaplan

BruceK@PremierCommercialRealty.com
O: 847.854.2300 xx20 C: 847.507.1759

LAND



CLICK HERE TO VIEW OUR WEBSITE

No warranty or representation is made as to the accuracy of the foregoing information. Terms of sale or lease and availability are subject to change or withdrawal without notice. This document is for information purposes only. No offer of sub-agency is being made.

