

For Sublease

Executive Suites

±125-375 SF Near Downtown
West Palm Beach

One Clearlake

250 South Australian Avenue, Suite 1500
West Palm Beach, FL 33401

Property Features

- Shared office opportunity in the prestigious One Clearlake Centre
- Lease one to three offices, with secretarial stations available
- High-profile Class-A building offering downtown conveniences with minimal traffic congestion
- Amenity rich space including on-site café, tenant lounge, conference center, and gym with showers
- Covered parking and 24/7 on-site security
- Minutes to downtown, Brightline, arterial roads and the airport

Key Features:



1 mile from I-95, near the best of the Palm Beaches



Brand new, fully furnished offices



Shared office space with use of common areas



Fantastic water and city views

For More Information:

Jason L. Sundook, SIOR

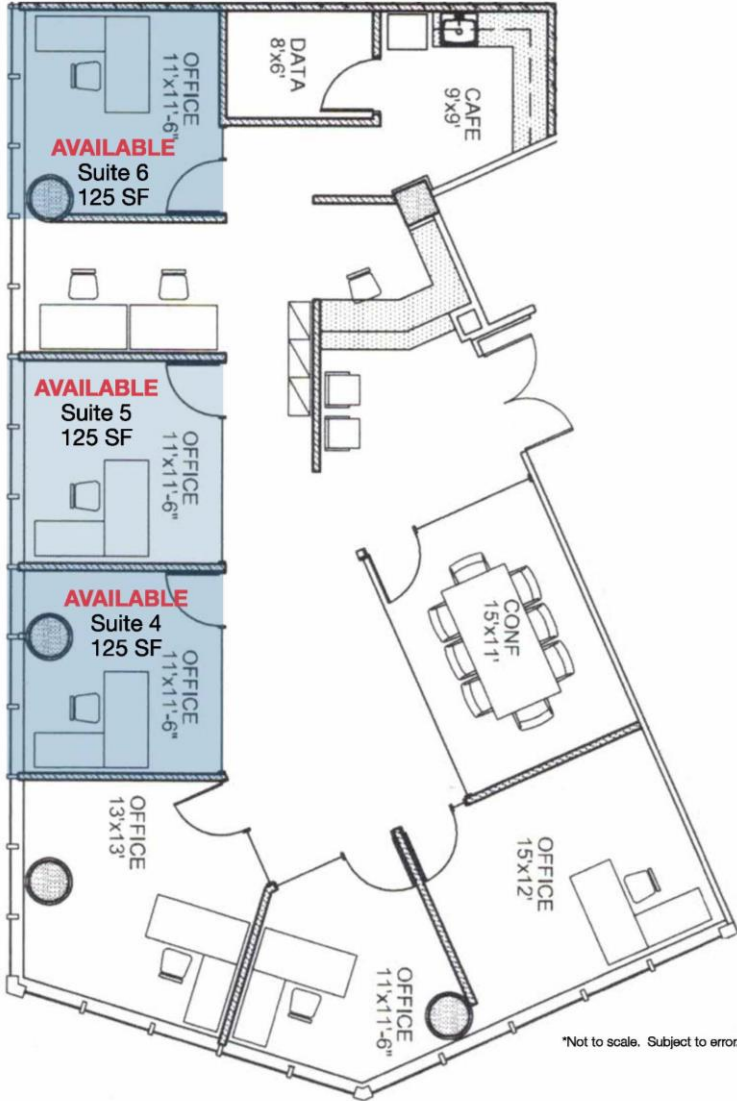
Principal | jsundook@mhcreal.com



FOR SUBLEASE: EXECUTIVE SUITES IN ONE CLEARLAKE

Shared Office Space | Fully Furnished | Common Areas

Suite 1500 | Offices 4-6 ±125-375 SF



Suite Features

- Shared space with a law firm
- Fully furnished offices with fantastic views
- Includes use of conference room and in-suite kitchen area
- Secretarial stations can be made available

For More Information:

Jason L. Sundook, SIOR | jsundook@mhcreal.com

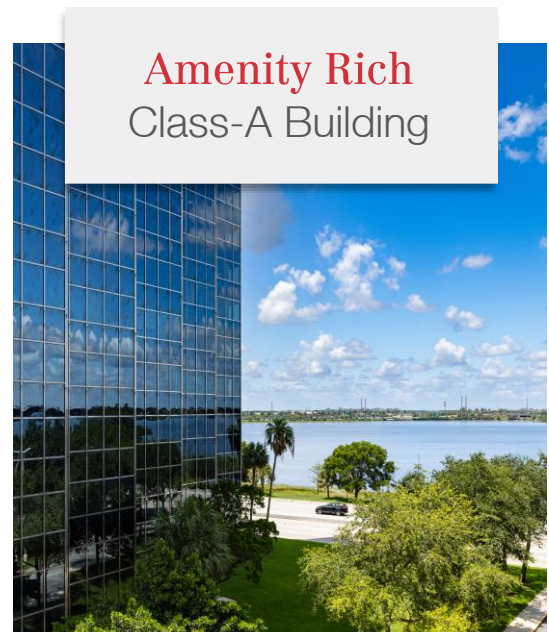


561 471 8000




www.mhcreal.com

FOR SUBLEASE: EXECUTIVE SUITES IN ONE CLEARLAKE Class-A Office Space Near Downtown West Palm Beach



Schedule Your Tour Today!  **561 471 8000**

For More Information:
Jason L. Sundook, SIOR | jsundook@mhcreal.com

 561 471 8000

 www.mhcreal.com