



Fischbach
LAND COMPANY

**RIVERVIEW
RESIDENTIAL
DEVELOPMENT**
6.73± ACRES

Property Overview

Excellent located 6.73± acres just 1 mile from the booming Big Bend and Hwy 301 intersection in Riverview, FL. This property is zoned AS-1 with a future land use of RES-6 and is in the heart of Riverview. Only 1.5 miles from the I-75 on ramp and within 5 minutes of St. Josephs hospital, South Hillsborough VA Clinic, and an extensive list of new retail, dining and amenities.



[FischbachLandCompany.com/RiverviewResidentialDevelopment](https://www.fischbachlandcompany.com/RiverviewResidentialDevelopment)

Property Highlights



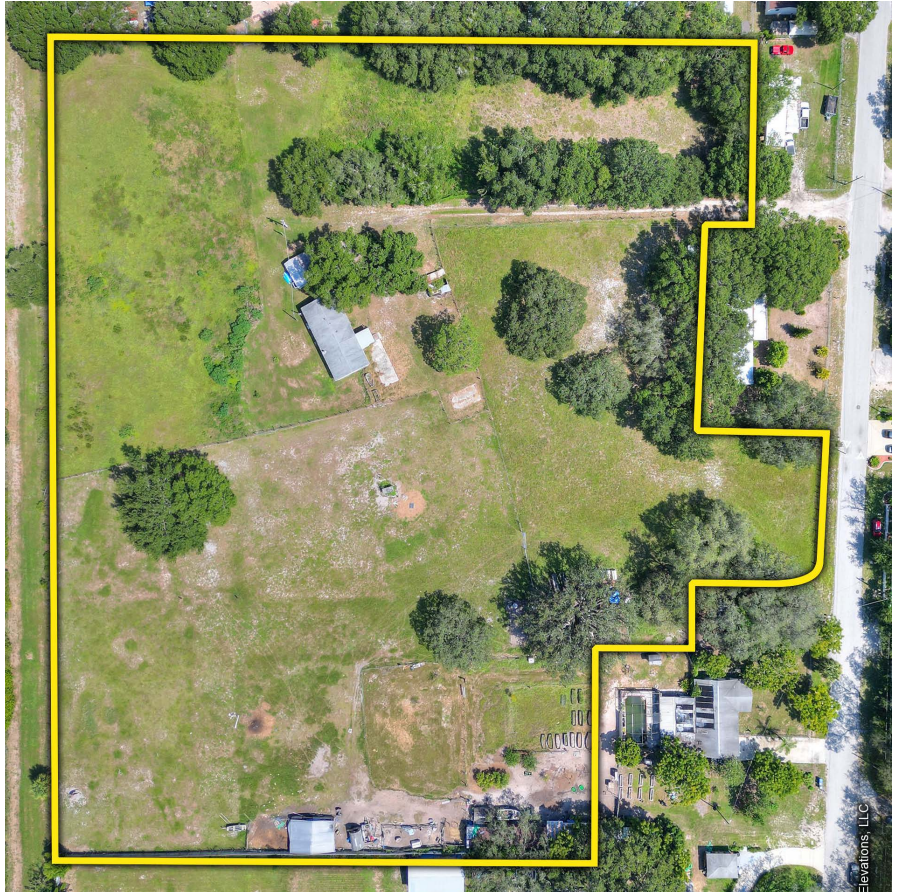
Highly Populated Area



Under a Mile from Big Bend Road & Hwy 301 Intersection









RES-6 Land Use



Property Address	10107 Chapmans Ranch Road, Riverview, FL 33578	Price	\$850,000
Property Type	Development Land	County	Hillsborough
Size	6.73± Acres	Folio/Parcel ID	077532-0125, Part of Folio 077640-0000, 077639-0000, & 077638-0000
Zoning	AS-1	STR	17-31-20
Future Land Use	RES-6	Utilities	10 Inch Watermain 4 Inch Forcemain 230± feet North on Cowley Road

Demographics

3 MILES	5 MILES	10 MILES
89,650 Population	163,511 Population	429,230 Population
 29,235 Households	 56,041 Households	 157,321 Households
 \$91,711 Median Household Income	 \$89,106 Median Household Income	 \$79,785 Median Household Income





Photos



Market Map



Fischbach **LAND COMPANY**

FISCHBACH LAND COMPANY

917 S PARSONS AVENUE, BRANDON, FL 33511

PHONE: 813-540-1000



REED FISCHBACH | Broker
reed@fischbachlandcompany.com



BLAISE LELAULU, CCIM | Agent
blaise@fischbachlandcompany.com