

**FOR  
SALE**

**Over 1/2 Acre Corner Lot**

1100 N. Wekiwa Springs Road  
Apopka, FL 32712



**CONTACT**

**Tim Corder**  
407.492.0857 *mobile*  
Tim@ResultsREPartners.com

**Results Real Estate Partners, LLC**  
*Licensed Commercial Real Estate Brokers*  
108 Commerce Street, Suite 200  
Lake Mary, Florida 32746

407.647.0200 *main*  
407.647.0205 *fax*

www.ResultsREPartners.com

**PROPERTY HIGHLIGHTS**

- Excellent Corner Lot Visibility on Wekiwa Springs Road
- Approximately .6 Acre Site Zoned A-2
- Across Street from Sweetwater Country Club Subdivision
- Active Residential Development Around Property Site
- Few Remaining Lots in this Area of Sweetwater Country Club
- Owner Will Finance to Approved Buyer
- Excellent Area Demographics and Traffic Counts
- Sales Price: \$220,000

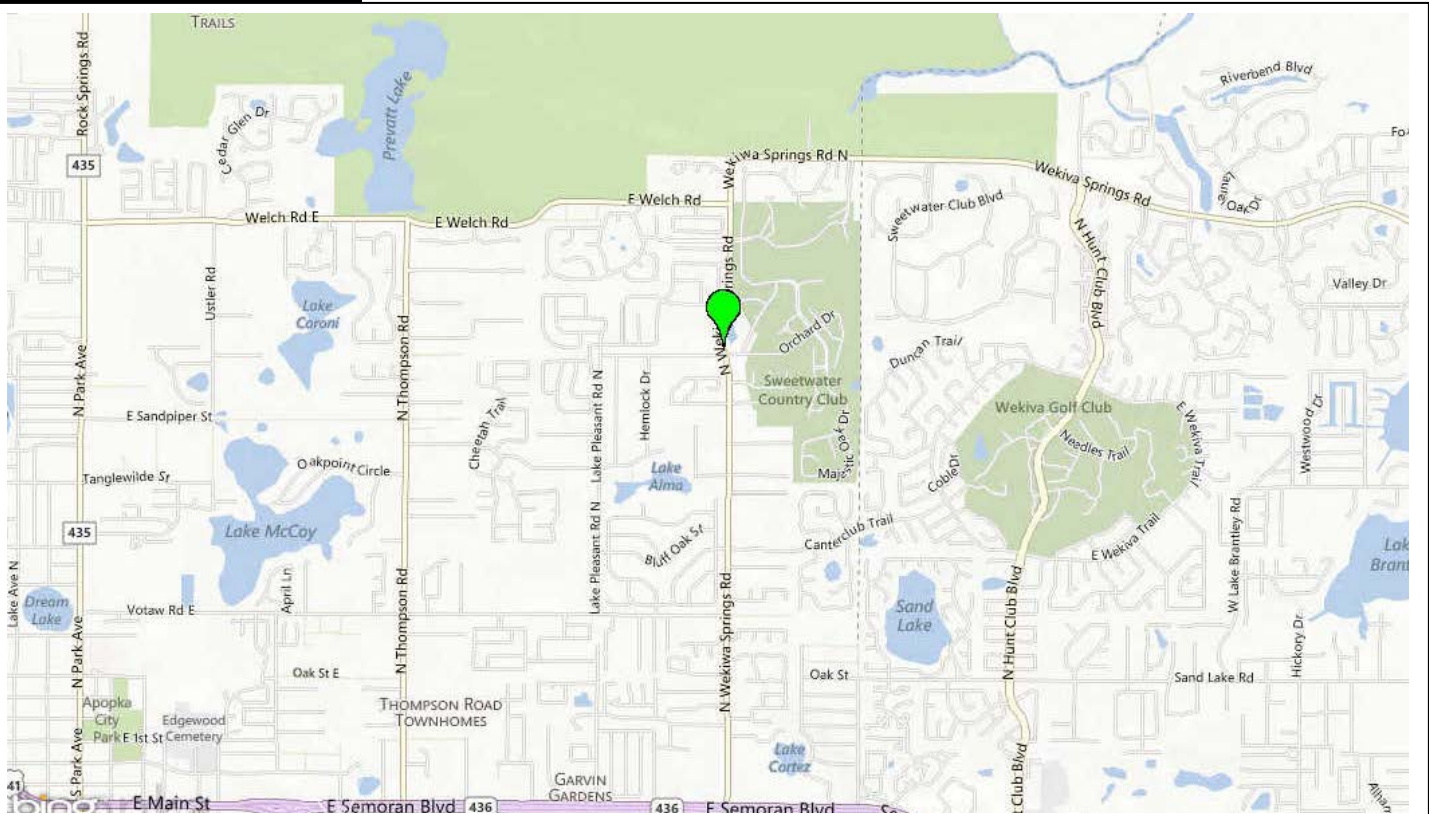
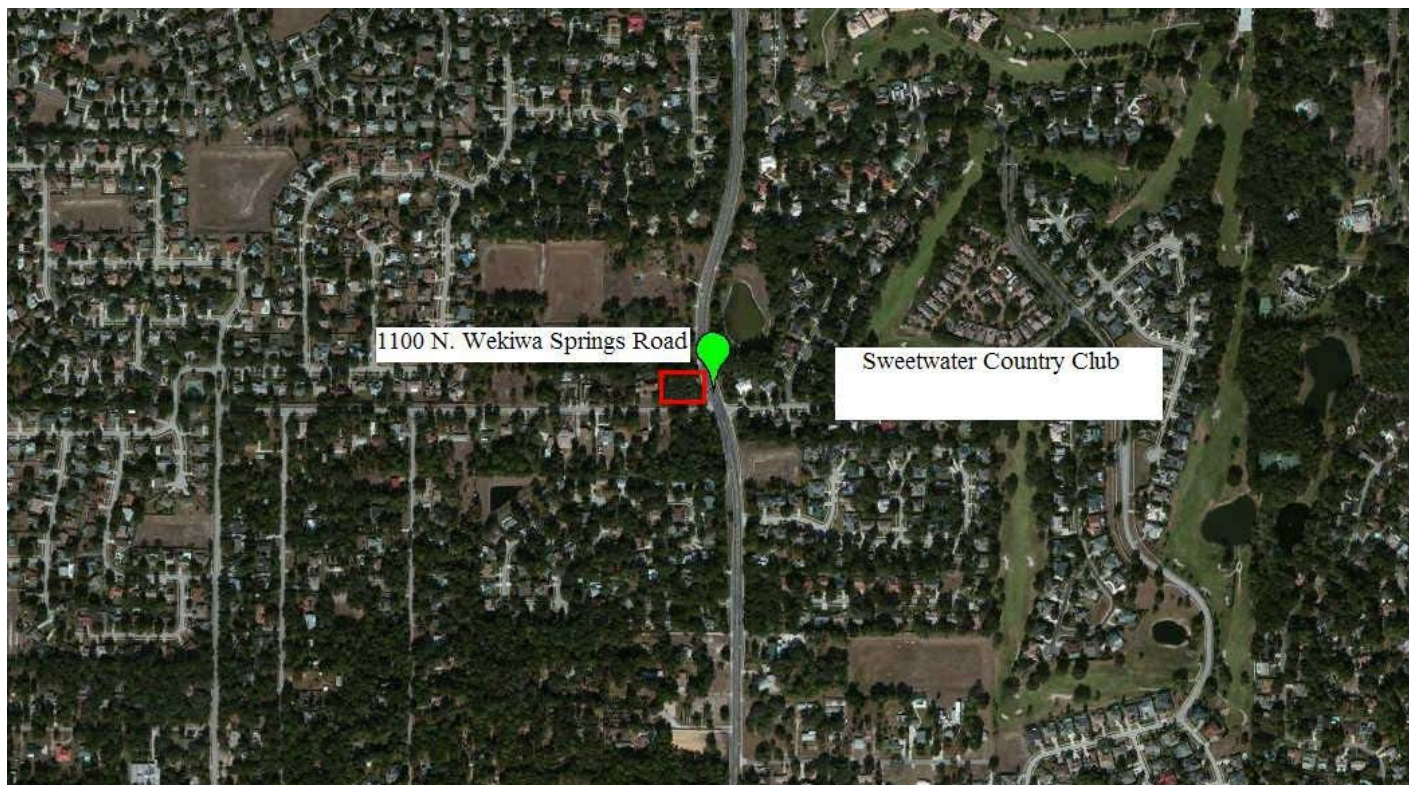
This information is from sources we deem reliable and is subject to prior sale, lease, withdrawal without notice, or change in prices, rates, or conditions. No representation is made as to the accuracy of any information furnished.



**FOR  
SALE**

**Over 1/2 Acre Corner Lot**

1100 N. Wekiwa Springs Road  
Apopka, FL 32712



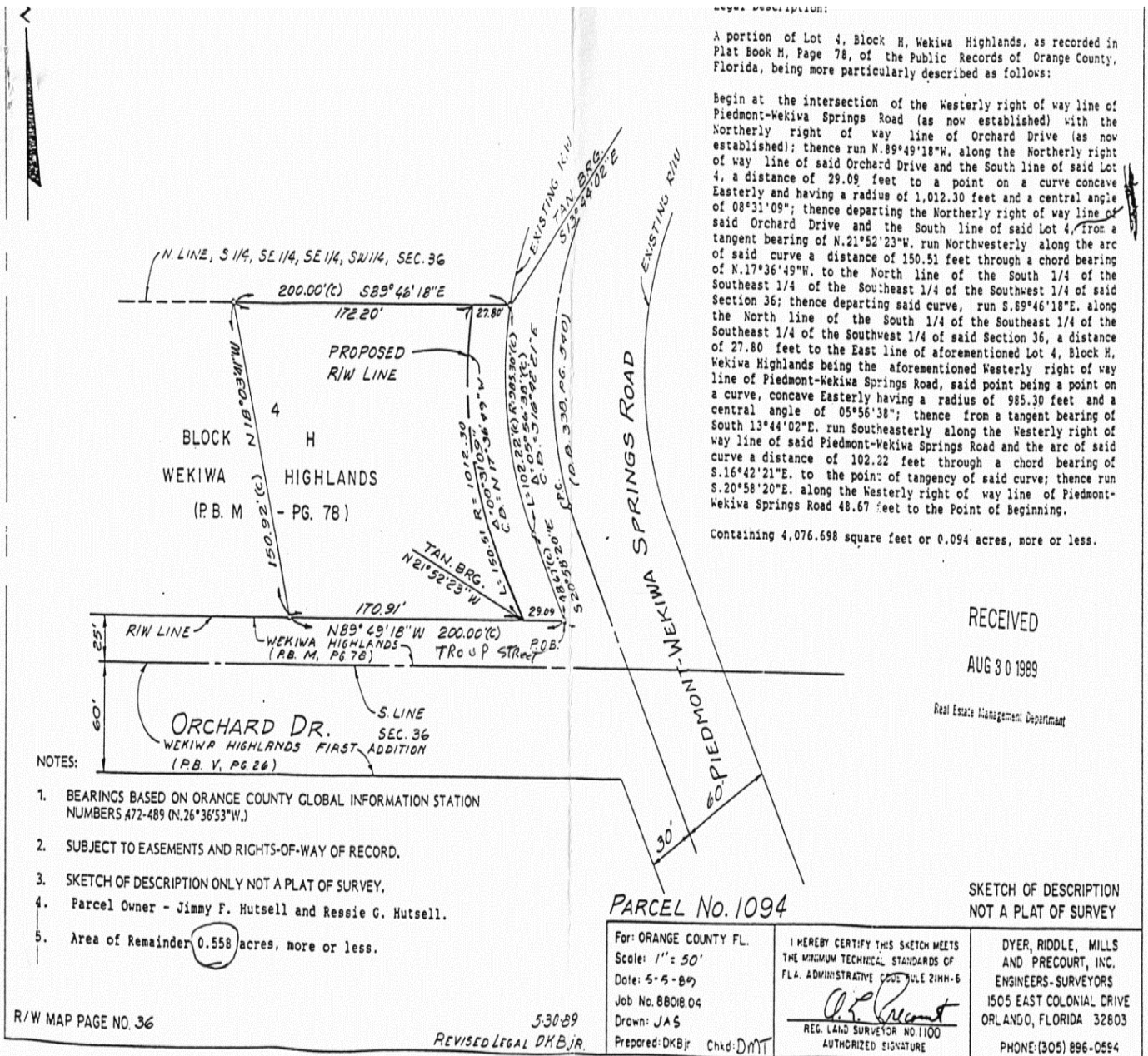
This information is from sources we deem reliable and is subject to prior sale, lease, withdrawal without notice, or change in prices, rates, or conditions. No representation is made as to the accuracy of any information furnished.



# FOR SALE

## Over 1/2 Acre Corner Lot

1100 N. Wekiwa Springs Road  
Apopka, FL 32712



### Results Real Estate Partners, LLC

Licensed Commercial Real Estate Brokers  
108 Commerce Street, Suite 200  
Lake Mary, Florida 32746

407.647.0200 main  
407.647.0205 fax

www.ResultsREPartners.com

## CONTACT

Tim Corder  
407.492.0857 mobile  
Tim@ResultsREPartners.com

This information is from sources we deem reliable and is subject to prior sale, lease, withdrawal without notice, or change in prices, rates, or conditions. No representation is made as to the accuracy of any information furnished.