

±3,500 SF Office Space

860 Jupiter Park Dr, Jupiter FL 33458

NAI Southcoast



Douglas Legler
Principal | Broker Associate
+1 772 405 7778
douglas@naisouthcoast.com
www.naisouthcoast.com

Casey Combs
Sales Associate
+1 772 285 8769
ccombs@naisouthcoast.com
www.naisouthcoast.com

FOR LEASE:

\$22.00/SF Modified Gross

±3,500 SF Office Building

860 Jupiter Park Dr, Jupiter FL 33458

Summary:

Address:	860 Jupiter Park Dr., Jupiter, FL 33458
Rent:	\$22.00/SF Modified Gross
Parking:	Ample
Unit Size:	±3,500 SF
Building Size:	17,900 SF
Zoning:	IL
Parcel ID:	30-42-41-09-01-000-0020
Year Built:	1987



Property Overview:

- Storage space of 500 SF in the rear with a roll up door!
- Located in Jupiter Park of Commerce, just East of I-95 and the Florida Turnpike, South of Indiantown Road, and West of Central Blvd.
- 1.8 Miles from I-95 and 2.7 miles from Florida Turnpike
- Eight separate offices, conference room, breakroom, restrooms, and a waiting room.
- Large population pool with high average household income within the surrounding area



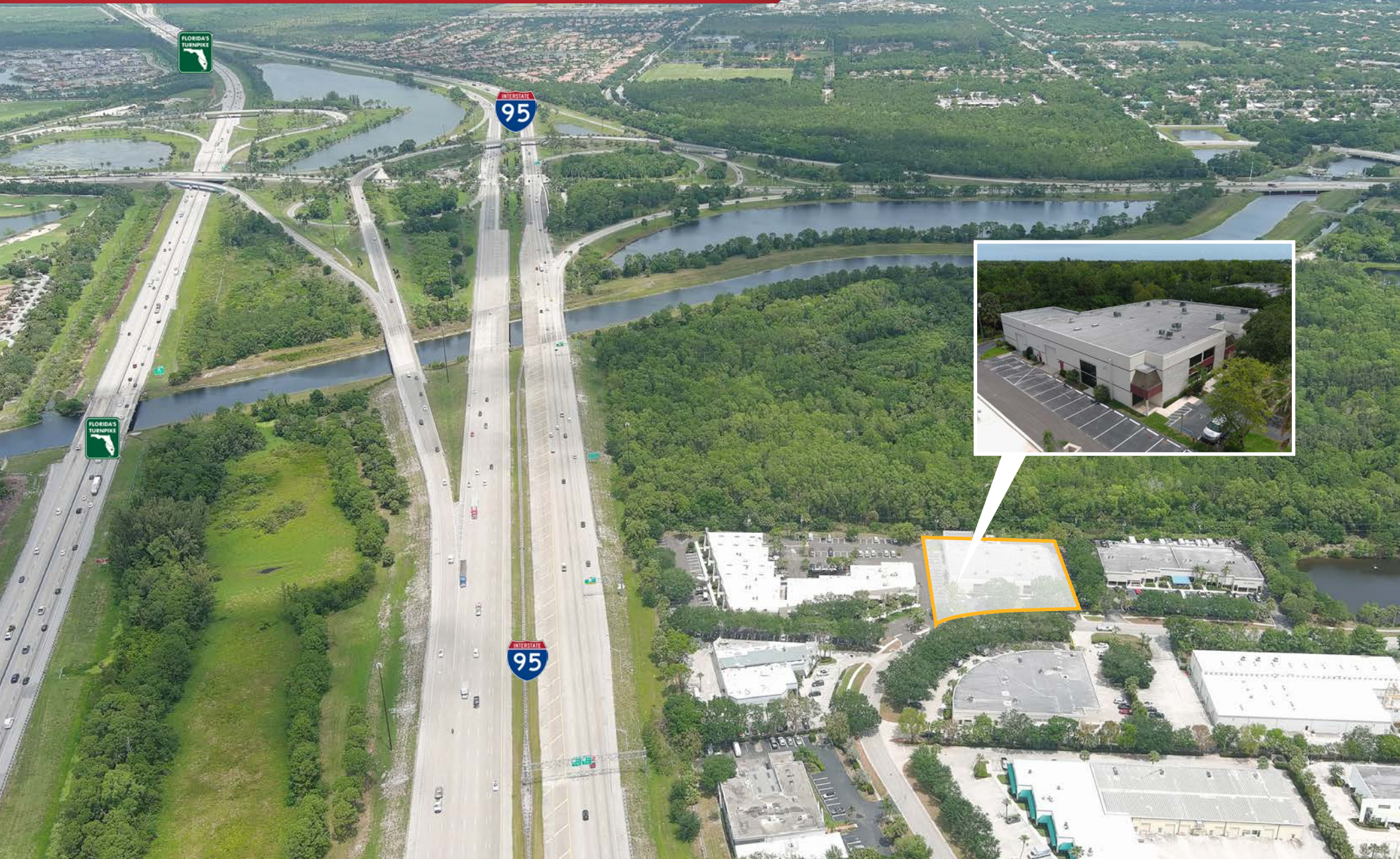
±3,500 SF Office Building

860 Jupiter Park Dr, Jupiter FL 33458



±3,500 SF Office Building

860 Jupiter Park Dr, Jupiter FL 33458



±3,500 SF Office Building

860 Jupiter Park Dr, Jupiter FL 33458



±3,500 SF Office Building

860 Jupiter Park Dr, Jupiter FL 33458



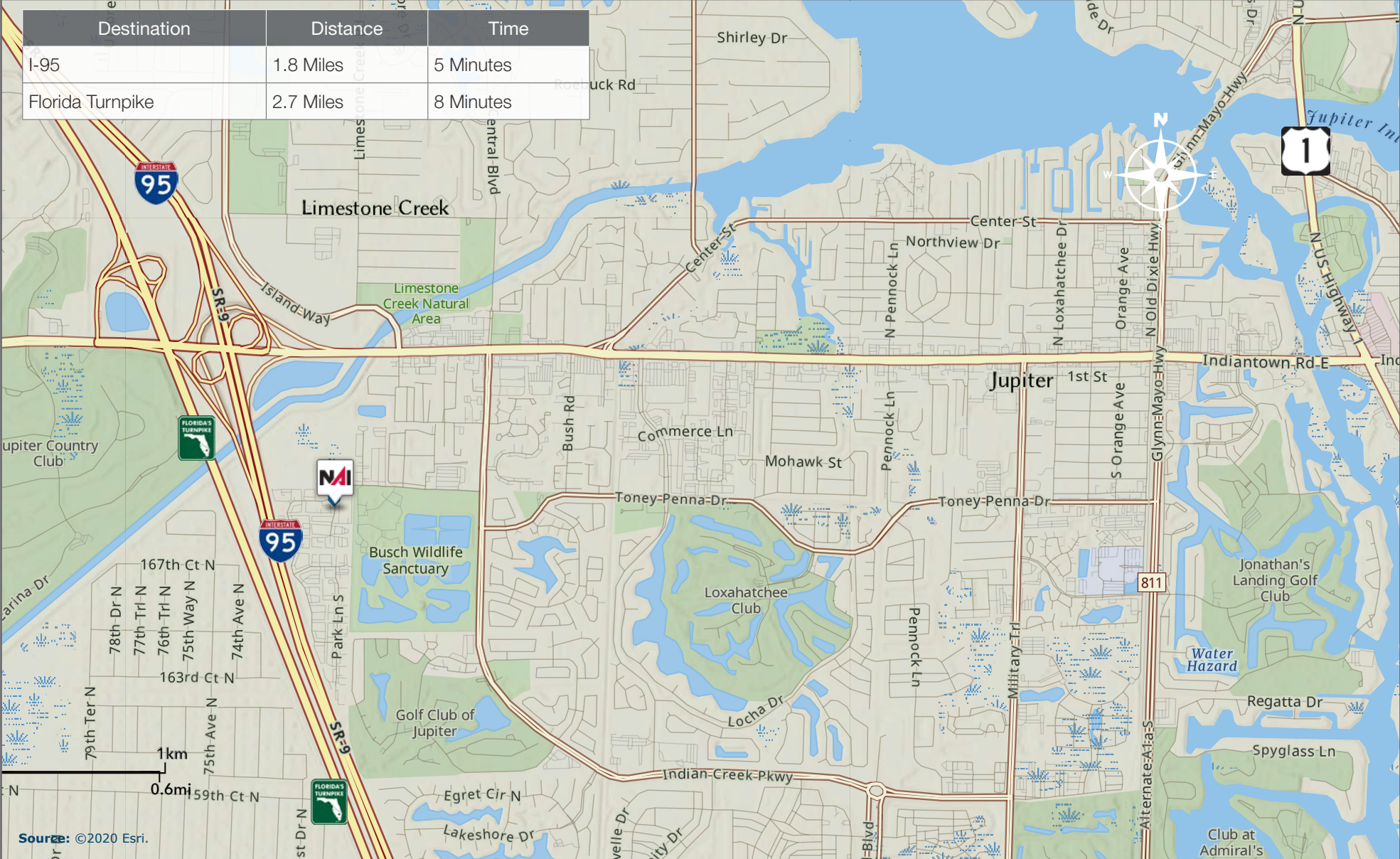
±3,500 SF Office Building

860 Jupiter Park Dr, Jupiter FL 33458



±3,500 SF Office Building

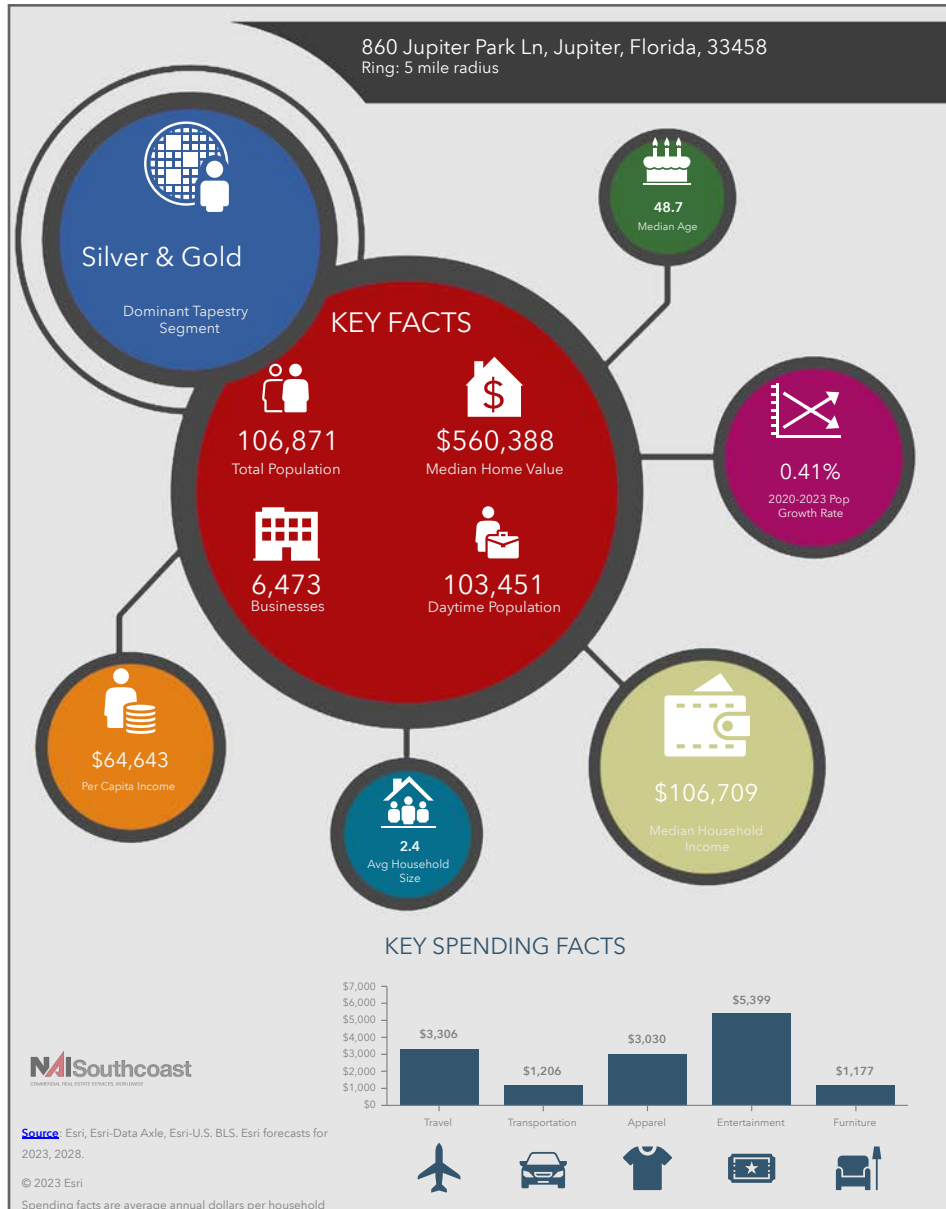
860 Jupiter Park Dr, Jupiter FL 33458



±3,500 SF Office Building

860 Jupiter Park Dr, Jupiter FL 33458

2023 Demographics



Population

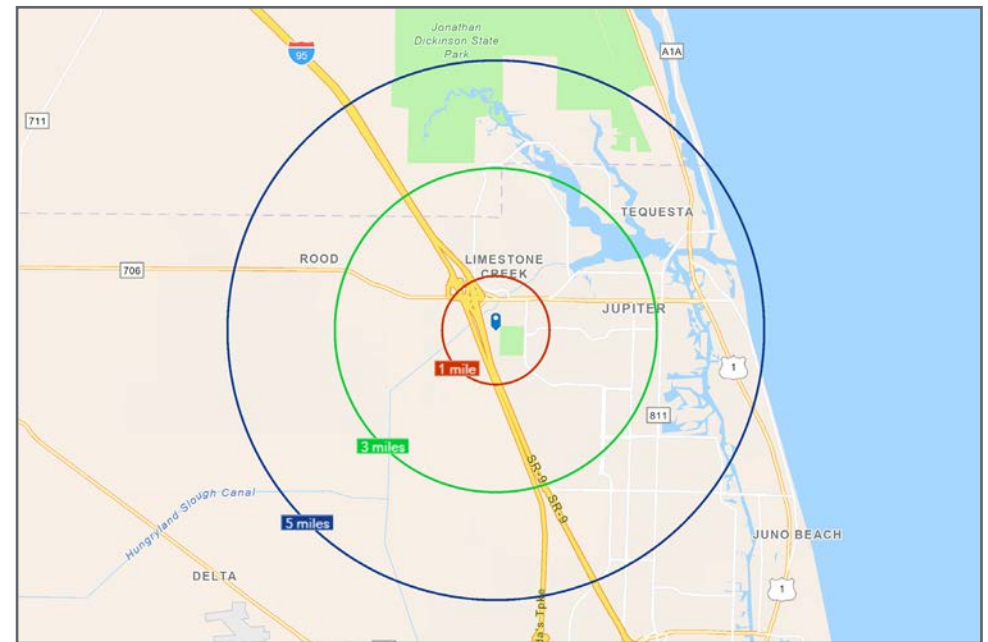
- 1 Mile: 7,139
- 3 Mile: 56,412
- 5 Mile: 106,871

Average Household Income

- 1 Mile: \$88,779
- 3 Mile: \$142,892
- 5 Mile: \$153,622

Median Age

- 1 Mile: 44.5
- 3 Mile: 42.5
- 5 Mile: 48.7



Presented By



Douglas Legler

Principal | Broker Associate
+1 772 405 7778
douglas@naisouthcoast.com
www.naisouthcoast.com



Casey Combs

Sales Associate
+1 772 285 8769
ccombs@naisouthcoast.com
www.naisouthcoast.com

±3,500 SF Office Space
860 Jupiter Park Dr, Jupiter FL 33458



FOR LEASE:

\$22.00/SF Modified Gross



NO WARRANTY OR REPRESENTATION, EXPRESS OR IMPLIED, IS MADE AS TO THE ACCURACY OF THE INFORMATION CONTAINED HEREIN, AND THE SAME IS SUBMITTED SUBJECT TO ERRORS, OMISSIONS, CHANGE OF PRICE, RENTAL OR OTHER CONDITIONS, PRIOR SALE, LEASE OR FINANCING, OR WITHDRAWAL WITHOUT NOTICE, AND OF ANY SPECIAL LISTING CONDITIONS IMPOSED BY OUR PRINCIPALS NO WARRANTIES OR REPRESENTATIONS ARE MADE AS TO THE CONDITION OF THE PROPERTY OR ANY HAZARDS CONTAINED THEREIN ARE ANY TO BE IMPLIED.