

14050 TOWN LOOP BLVD | ORLANDO, FL 32837

FOR LEASE



## BUILDING DATA

**Total Building SF:** 25,814 SF  
**Year Built:** 1997  
**Zoning:** P-D  
**Parking Ratio:** 5/1,000 SF

## LISTING DATA

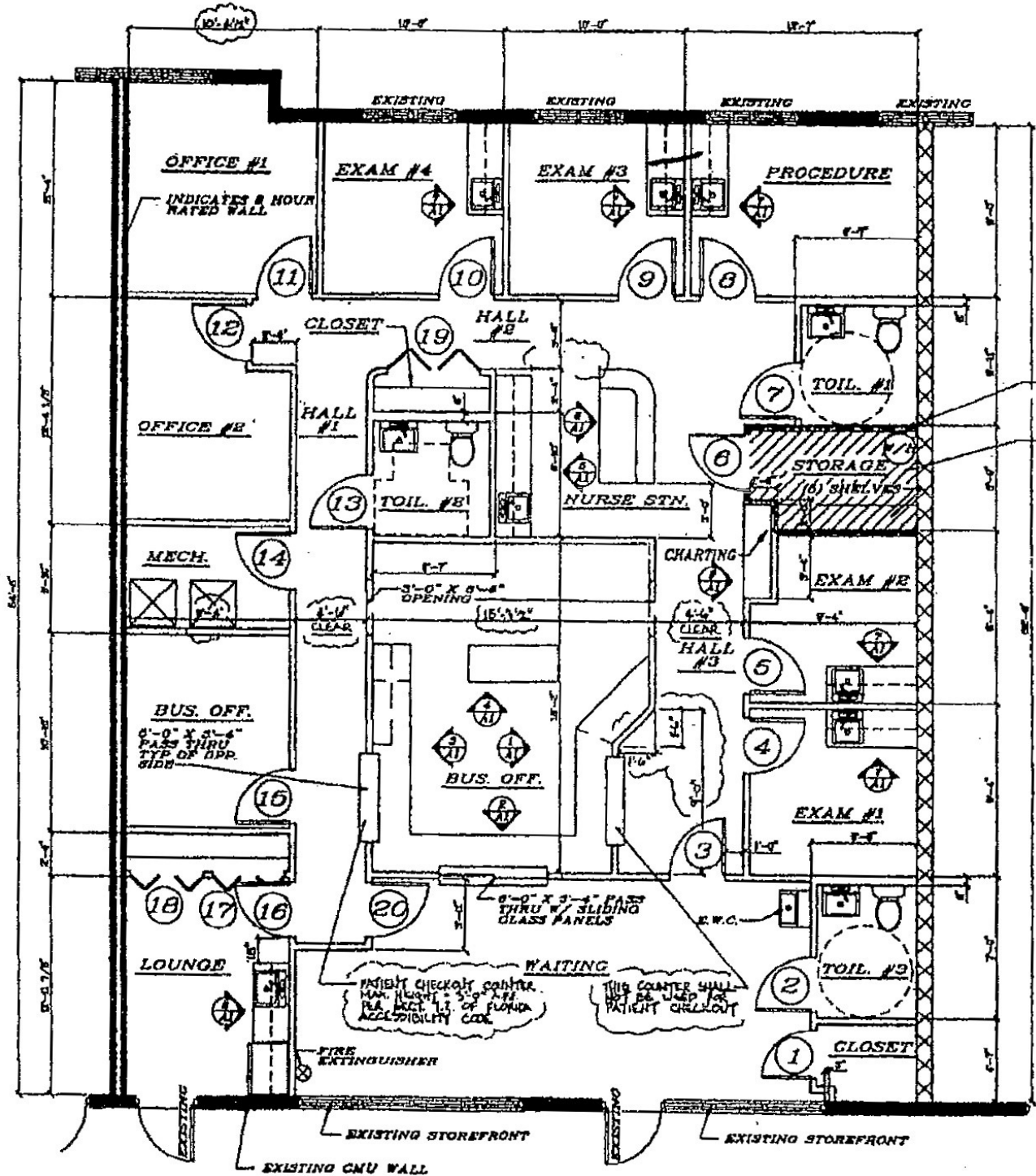
**Available SF:** Suite 202 - 2,451 SF

**Comments:** Turn key medical spaces available. Being located directly on the Orange / Osceola County line, Town Loop Medical Center gives the medical community the ability to effectively service patients from both counties. Additionally, the site is situated within a 5 mile radius of four existing hospital campuses. Existing tenant roster includes Davita, Quest, OB/GYN, Dentist, Family, and Dermatology.

## ECONOMIC DATA

**Lease Rate:** \$28.00 SF/yr (NNN)





Suite 202

SUITE 202 - TOWN LOOP

