

FOR SALE

Multi-Family Land

17122 US Highway 19 N., Largo, FL 33764



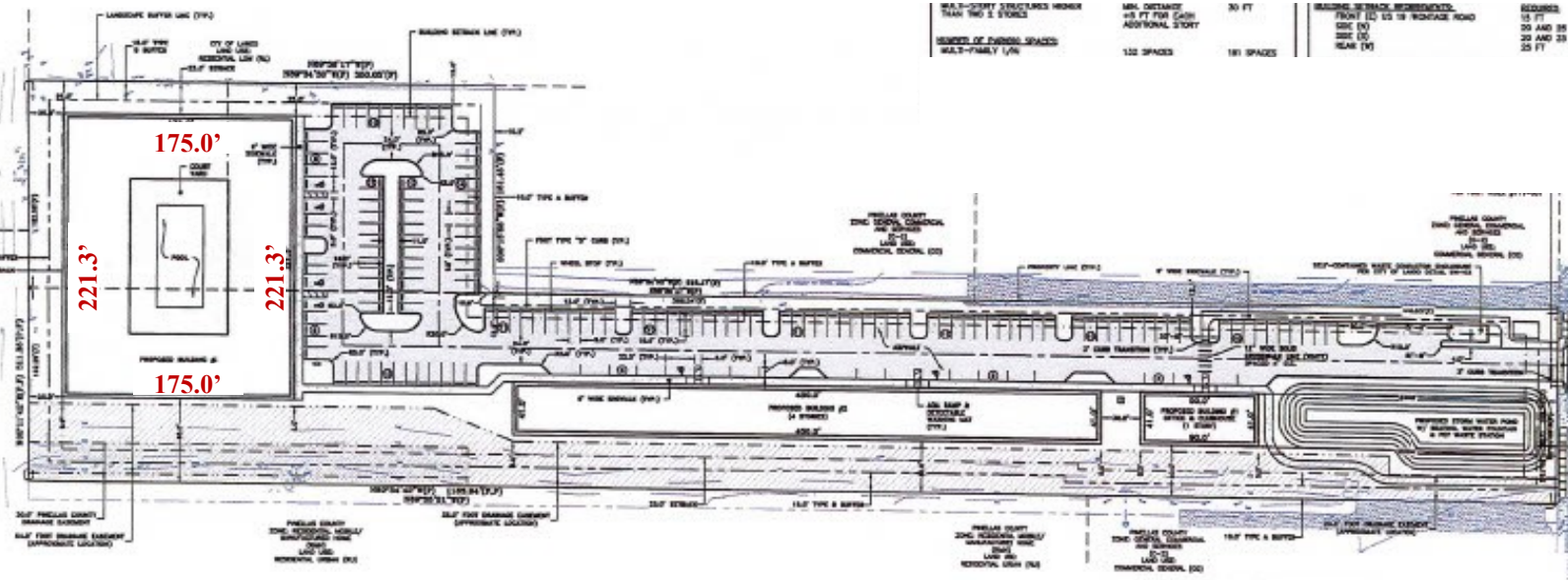
FEATURES

- ❖ 5.304 AC MOL
- ❖ Site Plan for 132 Units in process by Seller
- ❖ Zoning: CN—Commercial Neighborhood - City of Largo
- ❖ Future Land Use: Residential Low Medium (RLM)
- ❖ Utilities: Water, Trash: Pinellas County
Sewer: City of Largo
- ❖ Parcel ID Numbers: 30-29-16-55044-000-0022, -0023 and - 0024
- ❖ Flood Zone: X
- ❖ 2022 Real Estate Taxes: \$15,790 (total/all parcels)
- ❖ **ASKING PRICE: \$3,960,000.00**

LOCATION MAP



SITE PLAN



2022 Demographics	1-mile	3-mile	5-mile
Total Population	9,448	114,355	259,727
Total Households	5,094	50,673	115,785
Average Household Income	\$80,240	\$67,200	\$70,012

Area Drive Times	Miles	Minutes
St. Pete-Clearwater Int'l Airport	3.5	10
Clearwater Beach	9	18
Clearwater Mall	2.9	6

Pinellas County Parcel Map



Any information given herein is obtained from sources considered reliable. However, we are not responsible for misstatement of facts, errors, omissions, prior sale, withdrawal from market, modification of mortgage commitment, terms and considerations, or change in price without notice. The information supplied herein is for informational purposes only and shall not contain a warranty or assurance that said information is correct. Any person intending to rely upon the information supplied herein should verify said information independently.