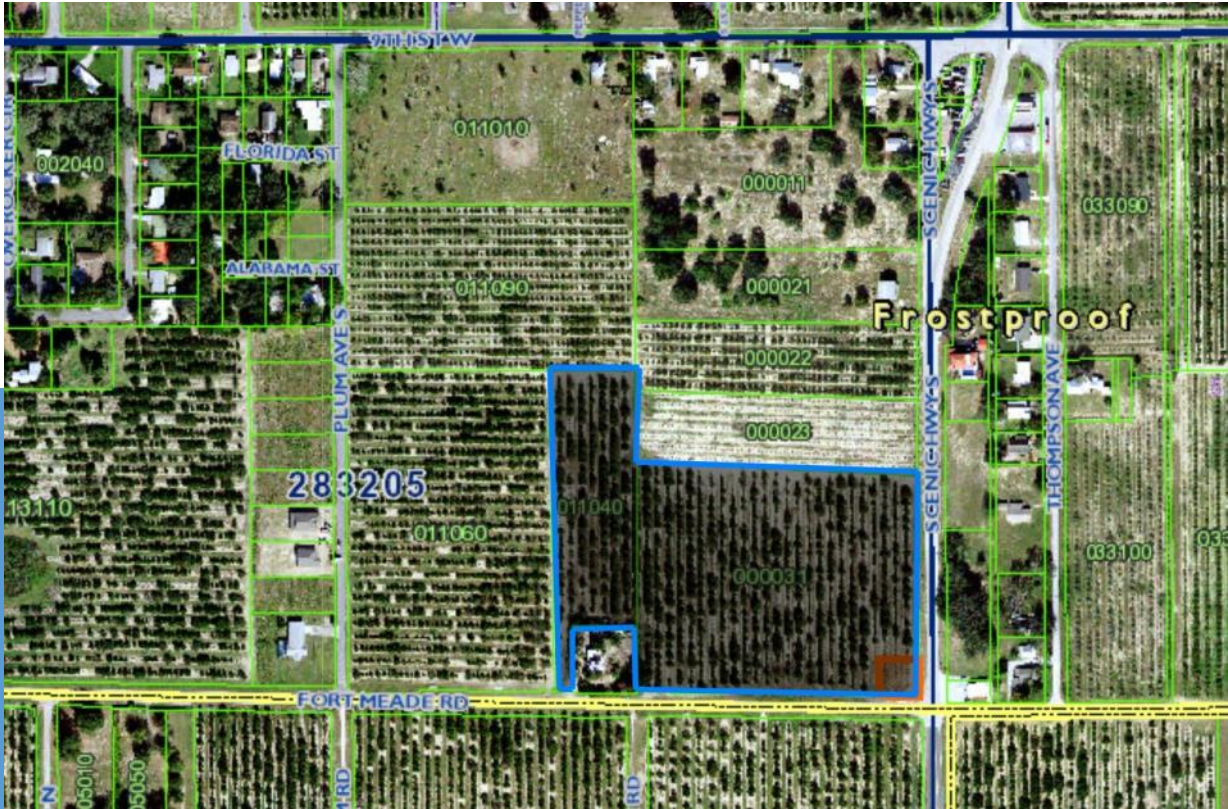


10.55 Acres

1016 STATE ROAD 17 & FORT MEAD ROAD, FROSTPROOF, FL 33843



10.55 Acres In the Path of Progress in Frostproof, FL

3 Parcels to be Sold together. Lots total +/-10.55 Acres.

Lots included are +/-7.54 AC, +/-2.83 AC, and +/-0.18 AC.

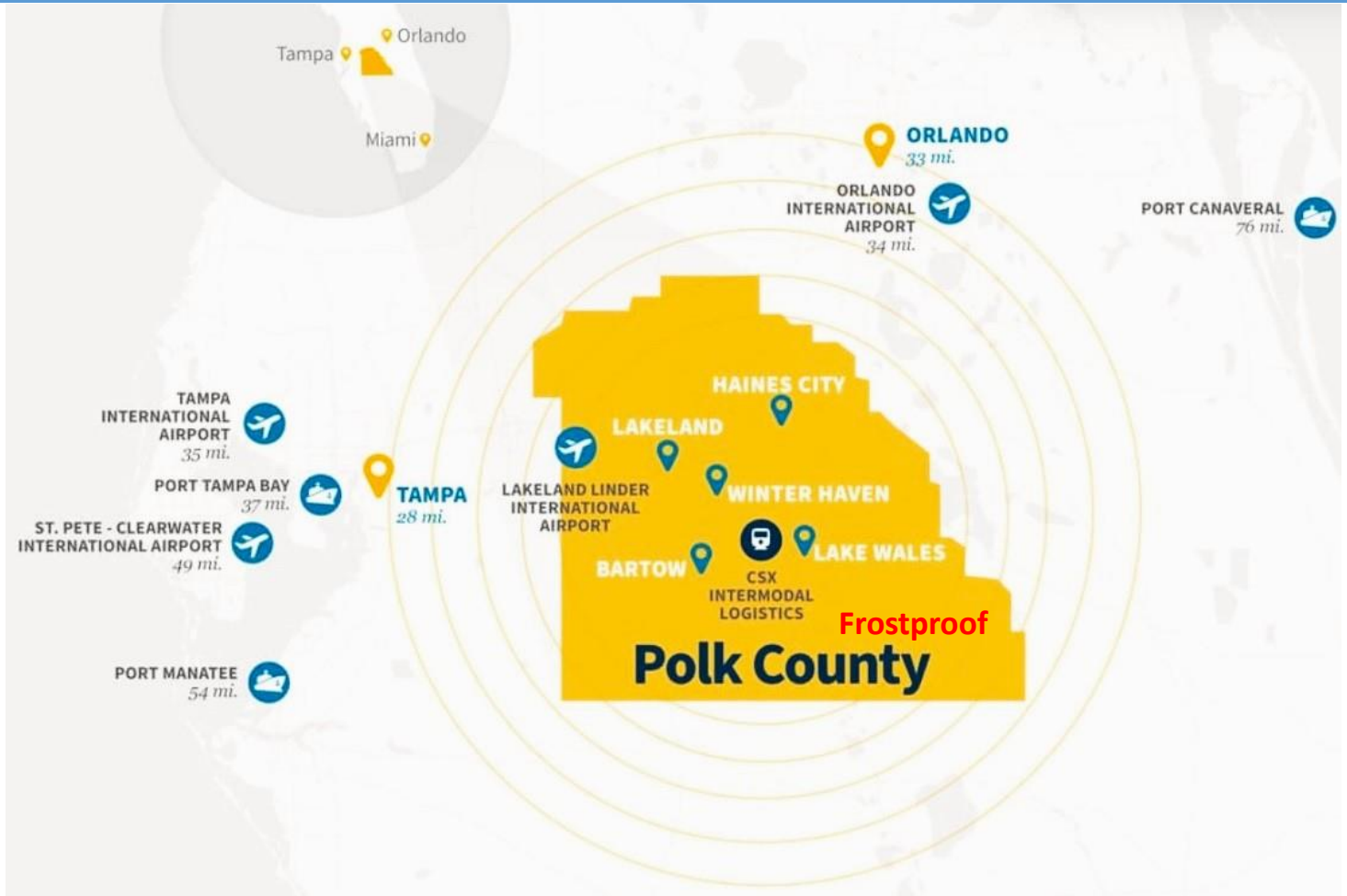
- ◇ **Currently Zoned Agricultural, with Future Land Use for Residential**
- ◇ **Located less than a mile from Ferguson and Lowes Distribution Centers**
- ◇ **Within an hours drive to LEGOLAND, Walt Disney World, the Sebring Raceway, and many other Florida attractions**
- ◇ **In Polk County, Florida's Business Friendly Tax Climate**
- ◇ **Ideal location for a recreational lifestyle community with some of the best fishing lakes, great golf courses, nature trails and state parks.**



Exclusively Listed By
INFINITY COMMERCIAL REAL ESTATE
Ives Dairy Road, Suite #119
Miami, FL 33179
863-777-5067
www.InfinityCommercial.net

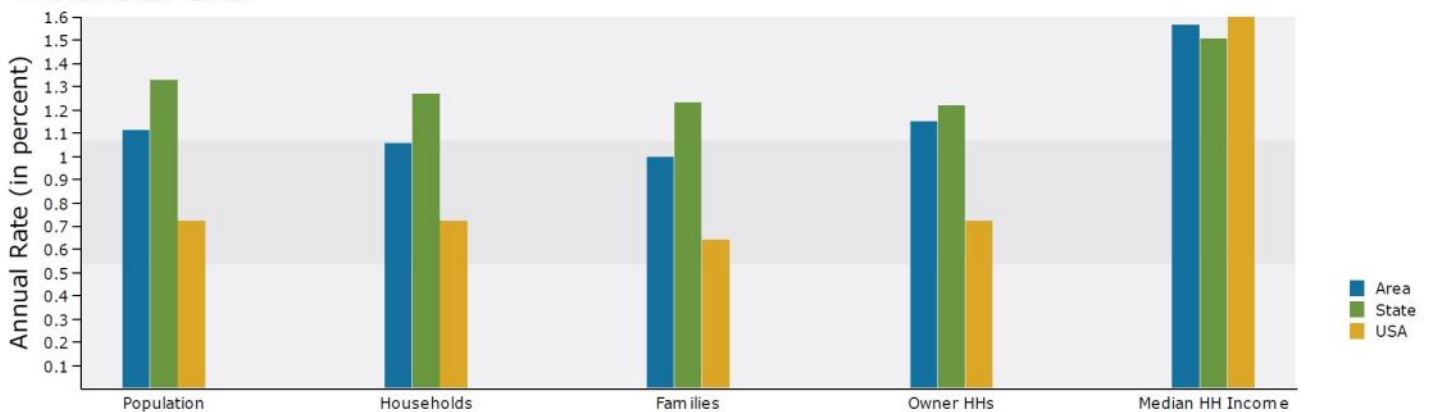
Sherri Beregovoy Cell: 305-803-3781
Sherri@infinitycommercial.net
Andrew Beregovoy Cell: 305-609-6308
Andrew@infinitycommercial.net

City of Frostproof Location



City of Frostproof Demographic Trends

Trends 2020-2025

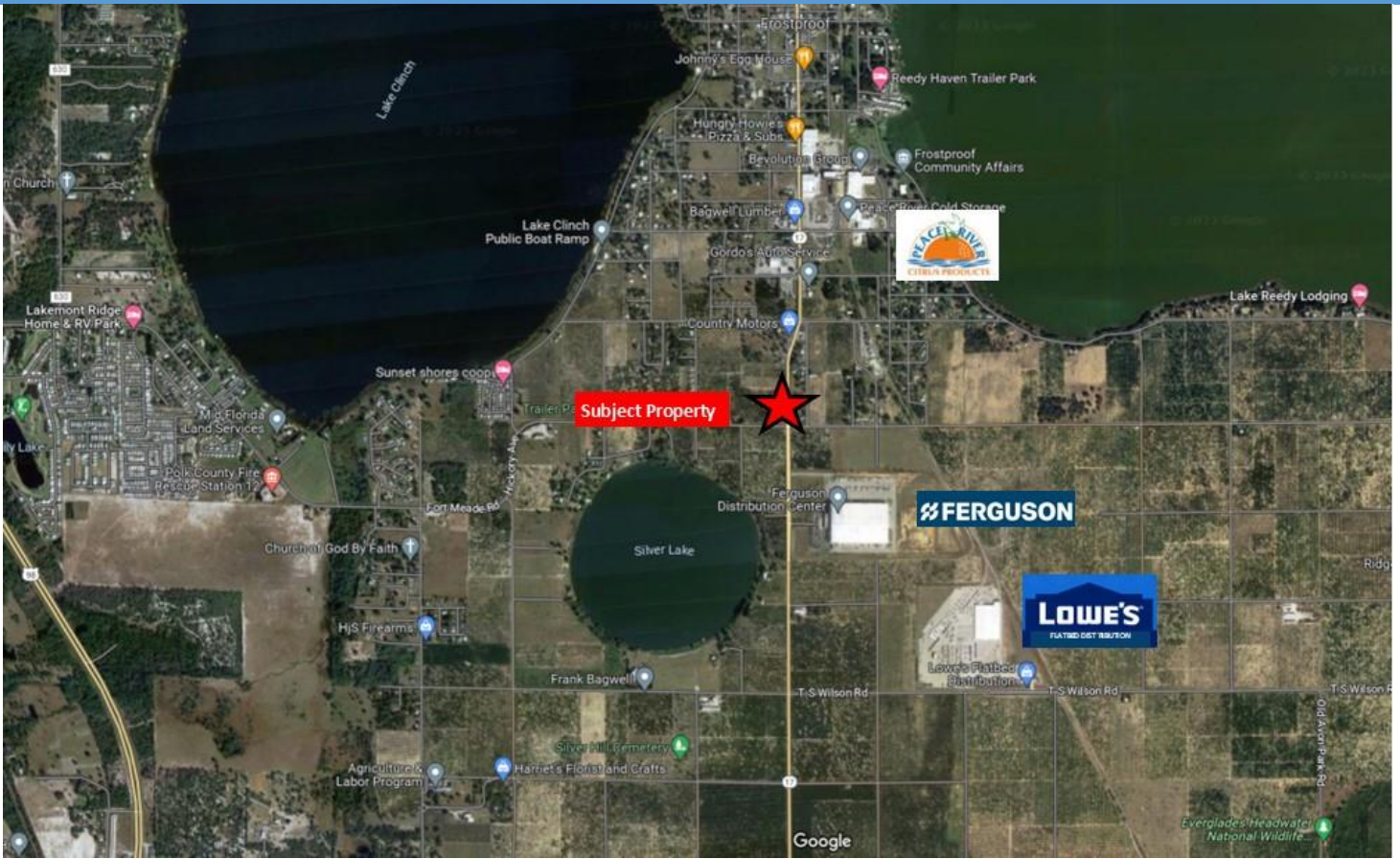


Exclusively Listed By
INFINITY COMMERCIAL REAL ESTATE
 1021 Ives Dairy Road, Suite #119
 Miami, FL 33179
863-777-5067
www.InfinityCommercial.net

Sherri Beregovoy Cell: 305-803-3781
Sherri@infinitycommercial.net

Andrew Beregovoy Cell: 305-609-6308
Andrew@infinitycommercial.net

Major Employers



City of Frostproof



City of Frostproof
The Friendly City



Exclusively Listed By
INFINITY COMMERCIAL REAL ESTATE
1021 Ives Dairy Road, Suite #119
Miami, FL 33179
863-777-5067
www.InfinityCommercial.net

Sherri Beregovoy Cell: 305-803-3781
Sherri@infinitycommercial.net

Andrew Beregovoy Cell: 305-609-6308
Andrew@infinitycommercial.net