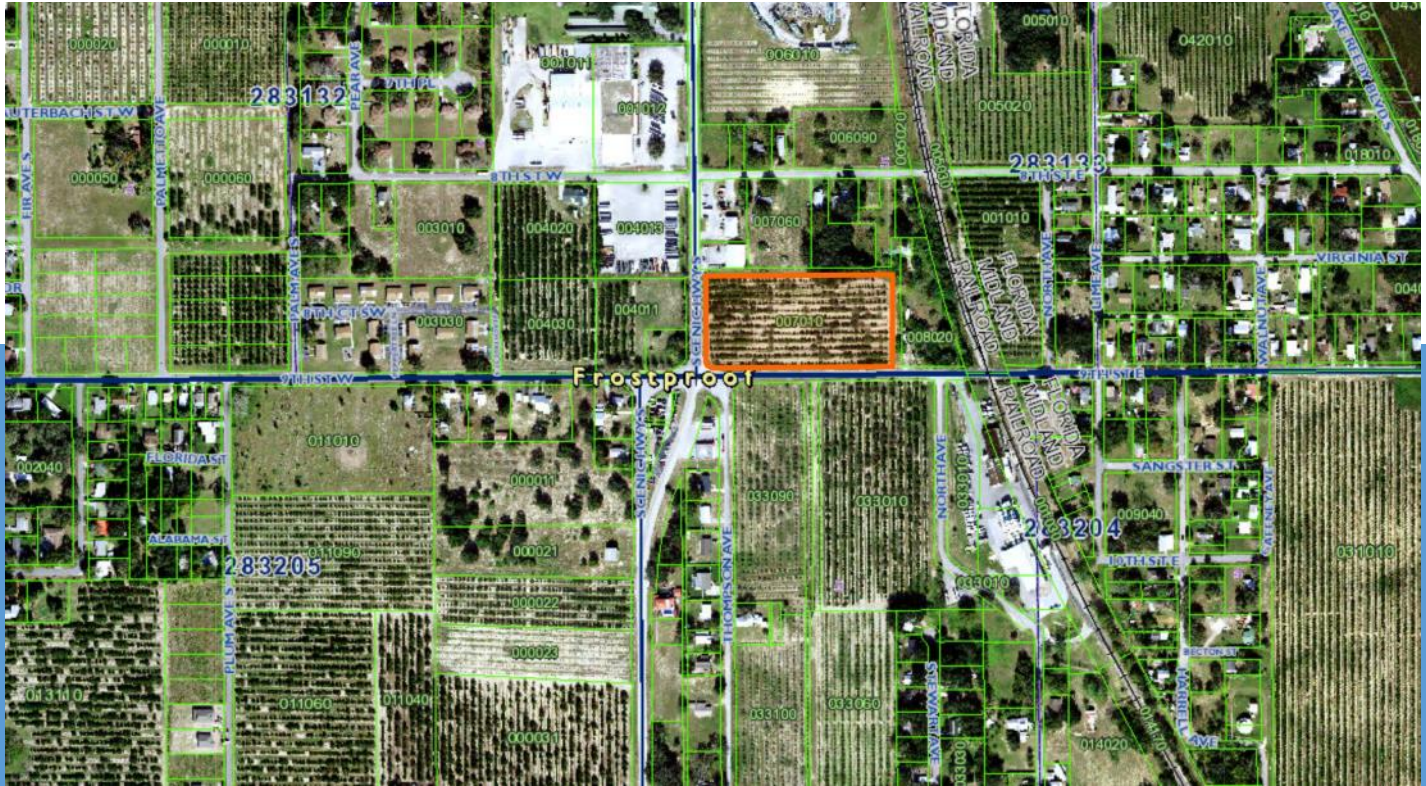


Future Residential Land 4.27 Acres

13-115 E 9TH ST, FROSTPROOF, FL 33843



Opportunity Zone

4.27 Acres In the Path of Progress in Frostproof, FL

- ◇ Currently Zoned Agricultural, with Future Land Use of Residential
- ◇ Located less than a mile from Ferguson & Lowes Distribution Centers
- ◇ Within an hours drive to LEGOLAND, Walt Disney World, the Sebring Raceway, and many other Florida attractions
- ◇ In Polk County, Florida's Business Friendly Tax Climate
- ◇ Ideal location for a recreational lifestyle community with some of the best fishing lakes, great golf courses, nature trails and state parks

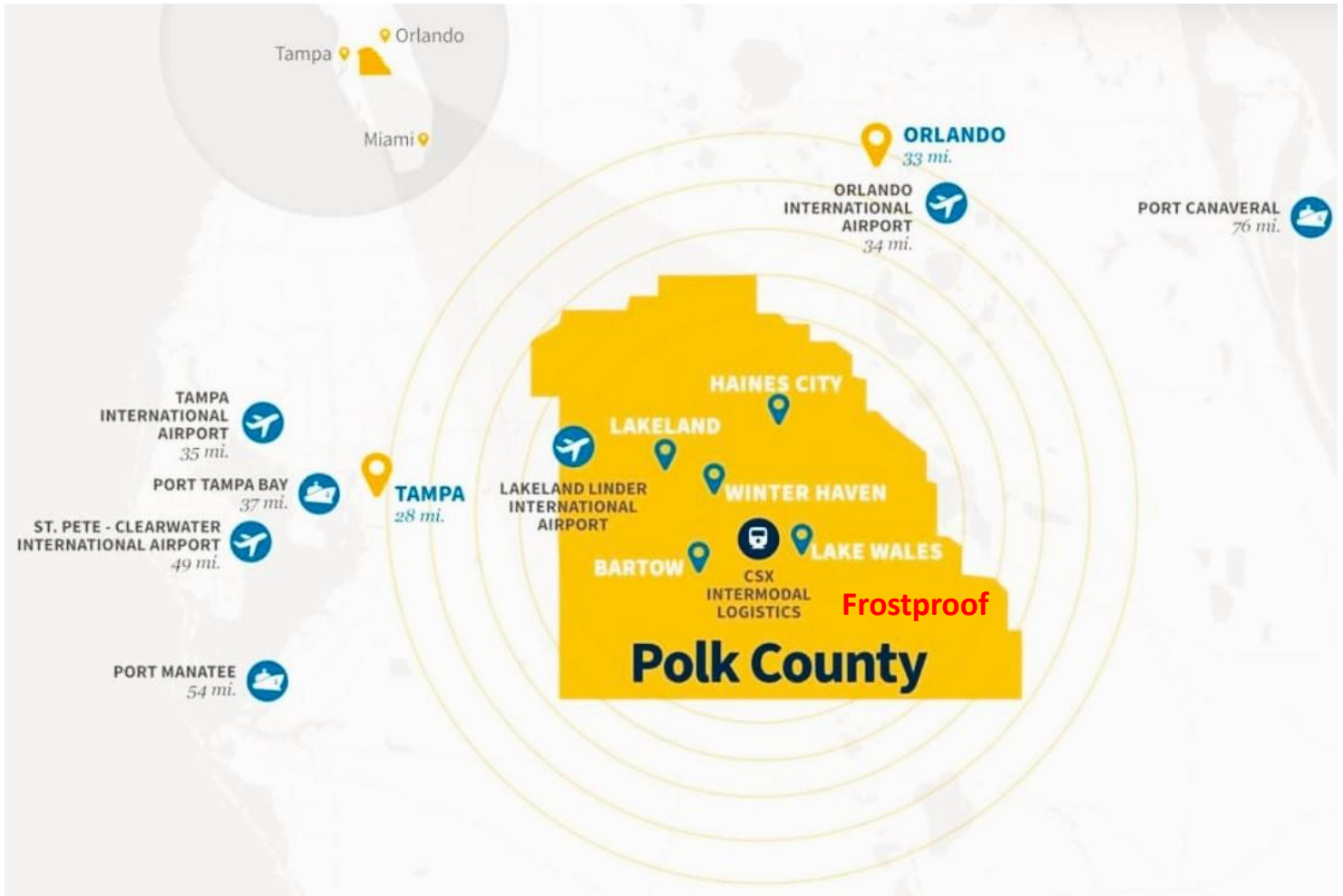


Exclusively Listed By
INFINITY COMMERCIAL REAL ESTATE
Ives Dairy Road, Suite #119
Miami, FL 33179
863-777-5067
www.InfinityCommercial.net

Sherri Beregovoy Cell: 305-803-3781
Sherri@infinitycommercial.net

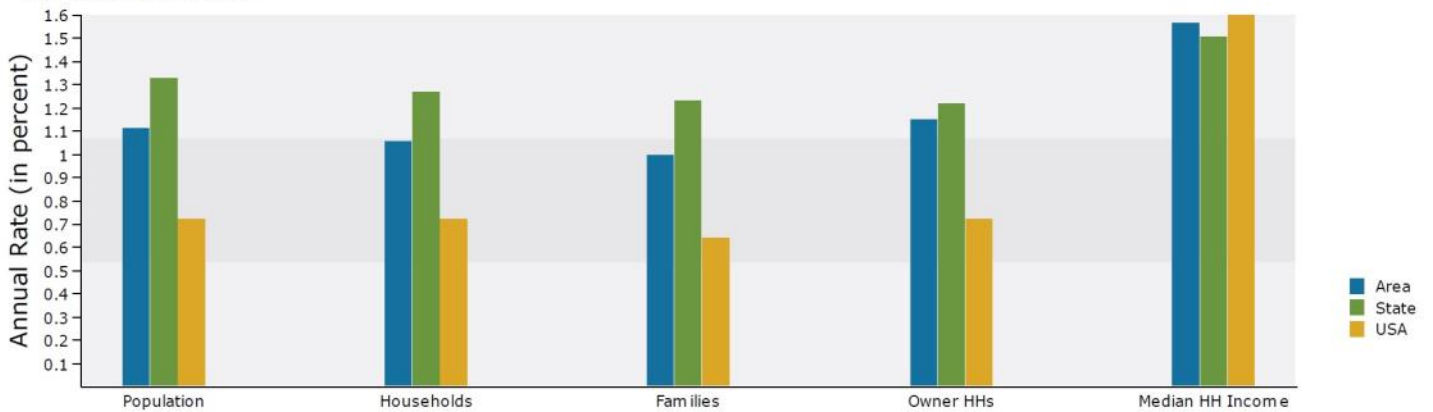
Andrew Beregovoy Cell: 305-609-6308
Andrew@infinitycommercial.net

City of Frostproof Location



City of Frostproof Demographic Trends

Trends 2020-2025

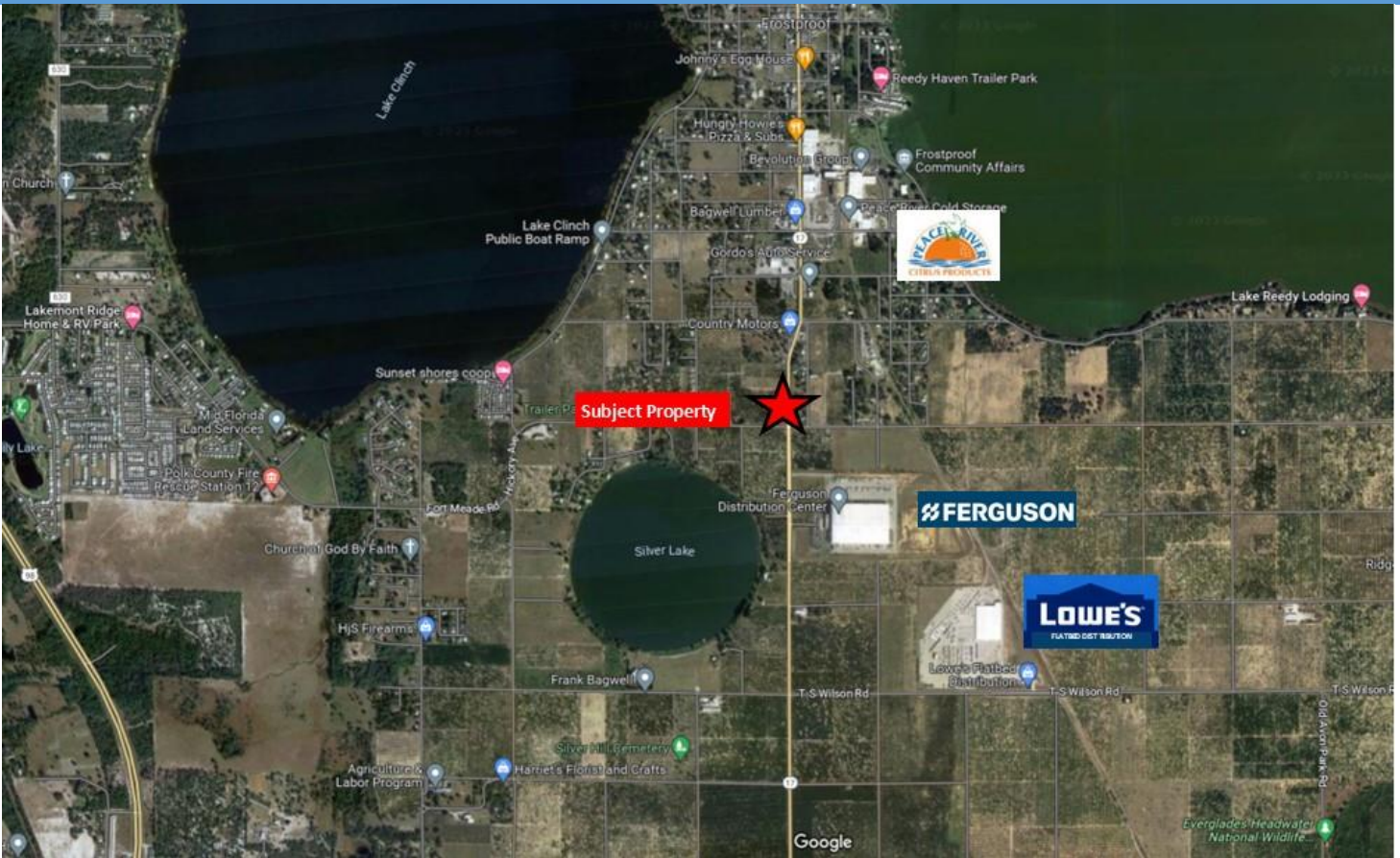


Exclusively Listed By
INFINITY COMMERCIAL REAL ESTATE
 1021 Ives Dairy Road, Suite #119
 Miami, FL 33179
863-777-5067
www.InfinityCommercial.net

Sherri Beregovoy Cell: 305-803-3781
Sherri@infinitycommercial.net

Andrew Beregovoy Cell: 305-609-6308
Andrew@infinitycommercial.net

Major Employers



City of Frostproof



City of Frostproof
The Friendly City



Exclusively Listed By

INFINITY COMMERCIAL REAL ESTATE
1021 Ives Dairy Road, Suite #119
Miami, FL 33179

Sherri Beregovoy

Cell: 305-803-3781

Sherri@infinitycommercial.net

Andrew Beregovoy

Cell: 305-609-6308

Andrew@infinitycommercial.net