



# Demographic and Income Comparison Profile

3255 Lawrenceville Suwanee Rd NW, Suwanee, Georgia,  
Rings: 1, 3, 5 mile radii

Prepared by Esri  
Latitude: 34.03680  
Longitude: -84.05281

	1 mile	3 miles	5 miles
<b>Census 2010 Summary</b>			
Population	2,824	54,884	148,337
Households	860	18,257	49,602
Families	699	14,650	39,144
Average Household Size	3.28	3.00	2.99
Owner Occupied Housing Units	747	14,861	37,817
Renter Occupied Housing Units	113	3,392	11,785
Median Age	37.0	36.2	35.5
<b>Census 2020 Summary</b>			
Population	4,321	66,220	178,932
Households	1,349	22,292	60,255
Average Household Size	3.15	2.96	2.95
<b>2023 Summary</b>			
Population	4,565	70,151	188,908
Households	1,407	23,842	64,288
Families	1,108	18,454	49,055
Average Household Size	3.20	2.93	2.92
Owner Occupied Housing Units	1,057	18,313	46,679
Renter Occupied Housing Units	350	5,529	17,609
Median Age	37.7	37.7	36.9
Median Household Income	\$112,016	\$102,274	\$97,263
Average Household Income	\$135,246	\$133,290	\$129,550
<b>2028 Summary</b>			
Population	4,840	73,417	199,301
Households	1,494	25,150	68,319
Families	1,172	19,409	51,924
Average Household Size	3.20	2.91	2.90
Owner Occupied Housing Units	1,132	18,913	48,321
Renter Occupied Housing Units	362	6,237	19,998
Median Age	37.6	38.2	37.4
Median Household Income	\$121,613	\$113,730	\$109,211
Average Household Income	\$155,481	\$151,448	\$147,598
<b>Trends: 2023-2028 Annual Rate</b>			
Population	1.18%	0.91%	1.08%
Households	1.21%	1.07%	1.22%
Families	1.13%	1.01%	1.14%
Owner Households	1.38%	0.65%	0.69%
Median Household Income	1.66%	2.15%	2.34%

Source: Esri forecasts for 2023 and 2028. U.S. Census Bureau 2010 decennial Census data converted by Esri into 2020 geography.



# Demographic and Income Comparison Profile

3255 Lawrenceville Suwanee Rd NW, Suwanee, Georgia,  
Rings: 1, 3, 5 mile radii

Prepared by Esri  
Latitude: 34.03680  
Longitude: -84.05281

2023 Households by Income	1 mile		3 miles		5 miles	
	Number	Percent	Number	Percent	Number	Percent
<\$15,000	84	6.0%	1,298	5.4%	3,624	5.6%
\$15,000 - \$24,999	7	0.5%	768	3.2%	2,770	4.3%
\$25,000 - \$34,999	123	8.7%	1,161	4.9%	3,993	6.2%
\$35,000 - \$49,999	97	6.9%	2,155	9.0%	5,687	8.8%
\$50,000 - \$74,999	104	7.4%	3,361	14.1%	9,094	14.1%
\$75,000 - \$99,999	110	7.8%	2,794	11.7%	7,643	11.9%
\$100,000 - \$149,999	490	34.8%	5,363	22.5%	13,919	21.7%
\$150,000 - \$199,999	172	12.2%	3,048	12.8%	7,319	11.4%
\$200,000+	221	15.7%	3,895	16.3%	10,239	15.9%
Median Household Income	\$112,016		\$102,274		\$97,263	
Average Household Income	\$135,246		\$133,290		\$129,550	
Per Capita Income	\$46,651		\$45,328		\$44,133	

2028 Households by Income	1 mile		3 miles		5 miles	
	Number	Percent	Number	Percent	Number	Percent
<\$15,000	70	4.7%	1,102	4.4%	3,058	4.5%
\$15,000 - \$24,999	4	0.3%	620	2.5%	2,222	3.3%
\$25,000 - \$34,999	94	6.3%	1,065	4.2%	3,512	5.1%
\$35,000 - \$49,999	71	4.8%	1,849	7.4%	4,899	7.2%
\$50,000 - \$74,999	85	5.7%	2,916	11.6%	8,390	12.3%
\$75,000 - \$99,999	104	7.0%	2,723	10.8%	7,802	11.4%
\$100,000 - \$149,999	555	37.1%	6,114	24.3%	16,100	23.6%
\$150,000 - \$199,999	235	15.7%	4,055	16.1%	9,889	14.5%
\$200,000+	275	18.4%	4,706	18.7%	12,447	18.2%
Median Household Income	\$121,613		\$113,730		\$109,211	
Average Household Income	\$155,481		\$151,448		\$147,598	
Per Capita Income	\$54,037		\$51,930		\$50,637	

**Data Note:** Income is expressed in current dollars.

**Source:** Esri forecasts for 2023 and 2028. U.S. Census Bureau 2010 decennial Census data converted by Esri into 2020 geography.



# Demographic and Income Comparison Profile

3255 Lawrenceville Suwanee Rd NW, Suwanee, Georgia,  
Rings: 1, 3, 5 mile radii

Prepared by Esri  
Latitude: 34.03680  
Longitude: -84.05281

2010 Population by Age	1 mile		3 miles		5 miles	
	Number	Percent	Number	Percent	Number	Percent
Age 0 - 4	203	7.2%	3,473	6.3%	9,772	6.6%
Age 5 - 9	238	8.4%	4,509	8.2%	12,278	8.3%
Age 10 - 14	226	8.0%	4,949	9.0%	13,271	8.9%
Age 15 - 19	191	6.8%	4,506	8.2%	11,874	8.0%
Age 20 - 24	113	4.0%	2,751	5.0%	7,903	5.3%
Age 25 - 34	344	12.2%	6,191	11.3%	17,851	12.0%
Age 35 - 44	509	18.0%	9,838	17.9%	25,841	17.4%
Age 45 - 54	460	16.3%	10,166	18.5%	26,186	17.7%
Age 55 - 64	315	11.2%	5,262	9.6%	14,025	9.5%
Age 65 - 74	140	5.0%	2,147	3.9%	5,915	4.0%
Age 75 - 84	68	2.4%	837	1.5%	2,560	1.7%
Age 85+	17	0.6%	255	0.5%	862	0.6%

2023 Population by Age	1 mile		3 miles		5 miles	
	Number	Percent	Number	Percent	Number	Percent
Age 0 - 4	291	6.4%	3,920	5.6%	11,006	5.8%
Age 5 - 9	336	7.4%	4,527	6.5%	12,317	6.5%
Age 10 - 14	417	9.1%	5,117	7.3%	13,718	7.3%
Age 15 - 19	318	7.0%	4,889	7.0%	13,667	7.2%
Age 20 - 24	224	4.9%	3,851	5.5%	11,423	6.0%
Age 25 - 34	520	11.4%	10,006	14.3%	27,345	14.5%
Age 35 - 44	744	16.3%	10,401	14.8%	27,138	14.4%
Age 45 - 54	685	15.0%	10,606	15.1%	27,432	14.5%
Age 55 - 64	547	12.0%	9,455	13.5%	24,468	13.0%
Age 65 - 74	327	7.2%	5,130	7.3%	13,908	7.4%
Age 75 - 84	119	2.6%	1,793	2.6%	5,130	2.7%
Age 85+	38	0.8%	456	0.7%	1,356	0.7%

2028 Population by Age	1 mile		3 miles		5 miles	
	Number	Percent	Number	Percent	Number	Percent
Age 0 - 4	316	6.5%	4,220	5.7%	12,030	6.0%
Age 5 - 9	342	7.1%	4,539	6.2%	12,595	6.3%
Age 10 - 14	360	7.4%	4,904	6.7%	13,394	6.7%
Age 15 - 19	360	7.4%	4,627	6.3%	12,891	6.5%
Age 20 - 24	210	4.3%	3,331	4.5%	10,633	5.3%
Age 25 - 34	652	13.5%	10,971	14.9%	30,154	15.1%
Age 35 - 44	697	14.4%	11,728	16.0%	30,897	15.5%
Age 45 - 54	726	15.0%	10,076	13.7%	26,189	13.1%
Age 55 - 64	553	11.4%	9,337	12.7%	24,346	12.2%
Age 65 - 74	399	8.2%	6,472	8.8%	16,996	8.5%
Age 75 - 84	177	3.7%	2,584	3.5%	7,352	3.7%
Age 85+	48	1.0%	625	0.9%	1,822	0.9%

Source: Esri forecasts for 2023 and 2028. U.S. Census Bureau 2010 decennial Census data converted by Esri into 2020 geography.



# Demographic and Income Comparison Profile

3255 Lawrenceville Suwanee Rd NW, Suwanee, Georgia,  
Rings: 1, 3, 5 mile radii

Prepared by Esri  
Latitude: 34.03680  
Longitude: -84.05281

2010 Race and Ethnicity	1 mile		3 miles		5 miles	
	Number	Percent	Number	Percent	Number	Percent
White Alone	1,687	59.7%	33,359	60.8%	88,446	59.6%
Black Alone	304	10.8%	7,533	13.7%	21,832	14.7%
American Indian Alone	4	0.1%	132	0.2%	409	0.3%
Asian Alone	696	24.6%	10,556	19.2%	26,946	18.2%
Pacific Islander Alone	7	0.2%	13	0.0%	64	0.0%
Some Other Race Alone	70	2.5%	1,744	3.2%	6,548	4.4%
Two or More Races	56	2.0%	1,546	2.8%	4,092	2.8%
Hispanic Origin (Any Race)	242	8.6%	5,640	10.3%	18,622	12.6%

2020 Race and Ethnicity	1 mile		3 miles		5 miles	
	Number	Percent	Number	Percent	Number	Percent
White Alone	1,683	38.9%	27,854	42.1%	72,244	40.4%
Black Alone	683	15.8%	10,974	16.6%	32,203	18.0%
American Indian Alone	27	0.6%	269	0.4%	930	0.5%
Asian Alone	1,405	32.5%	17,285	26.1%	43,255	24.2%
Pacific Islander Alone	5	0.1%	33	0.0%	95	0.1%
Some Other Race Alone	155	3.6%	3,458	5.2%	12,325	6.9%
Two or More Races	363	8.4%	6,345	9.6%	17,880	10.0%
Hispanic Origin (Any Race)	428	9.9%	8,558	12.9%	28,035	15.7%

2023 Race and Ethnicity	1 mile		3 miles		5 miles	
	Number	Percent	Number	Percent	Number	Percent
White Alone	1,664	36.4%	27,752	39.6%	71,931	38.1%
Black Alone	728	15.9%	11,706	16.7%	34,209	18.1%
American Indian Alone	29	0.6%	299	0.4%	1,028	0.5%
Asian Alone	1,566	34.3%	19,418	27.7%	47,936	25.4%
Pacific Islander Alone	6	0.1%	35	0.0%	100	0.1%
Some Other Race Alone	175	3.8%	3,883	5.5%	13,993	7.4%
Two or More Races	398	8.7%	7,058	10.1%	19,712	10.4%
Hispanic Origin (Any Race)	481	10.5%	9,619	13.7%	31,629	16.7%

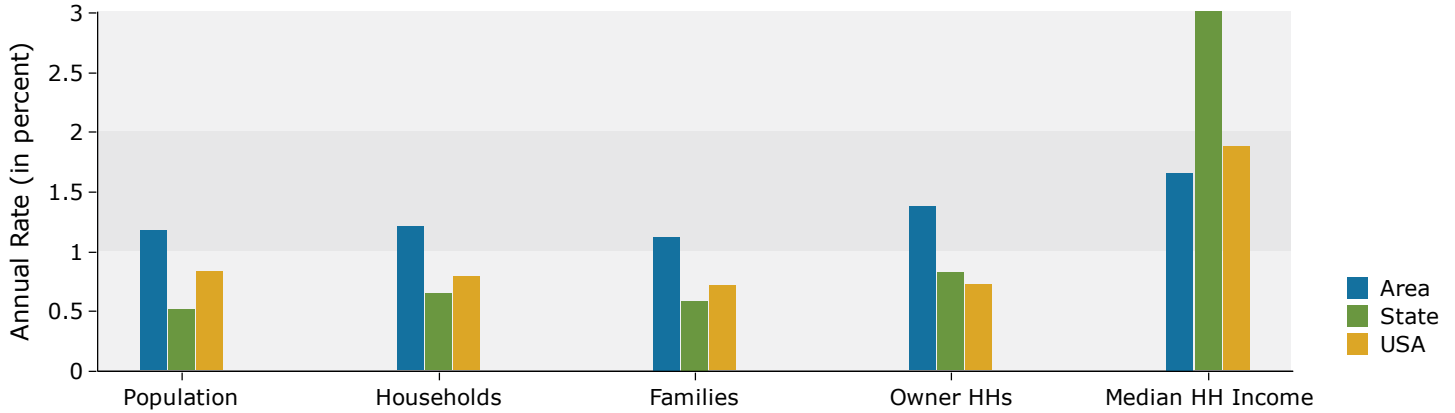
  

2028 Race and Ethnicity	1 mile		3 miles		5 miles	
	Number	Percent	Number	Percent	Number	Percent
White Alone	1,571	32.5%	25,677	35.0%	68,065	34.2%
Black Alone	780	16.1%	12,628	17.2%	36,922	18.5%
American Indian Alone	32	0.7%	341	0.5%	1,190	0.6%
Asian Alone	1,800	37.2%	22,323	30.4%	54,319	27.3%
Pacific Islander Alone	7	0.1%	40	0.1%	107	0.1%
Some Other Race Alone	199	4.1%	4,452	6.1%	16,323	8.2%
Two or More Races	451	9.3%	7,955	10.8%	22,375	11.2%
Hispanic Origin (Any Race)	532	11.0%	10,693	14.6%	35,748	17.9%

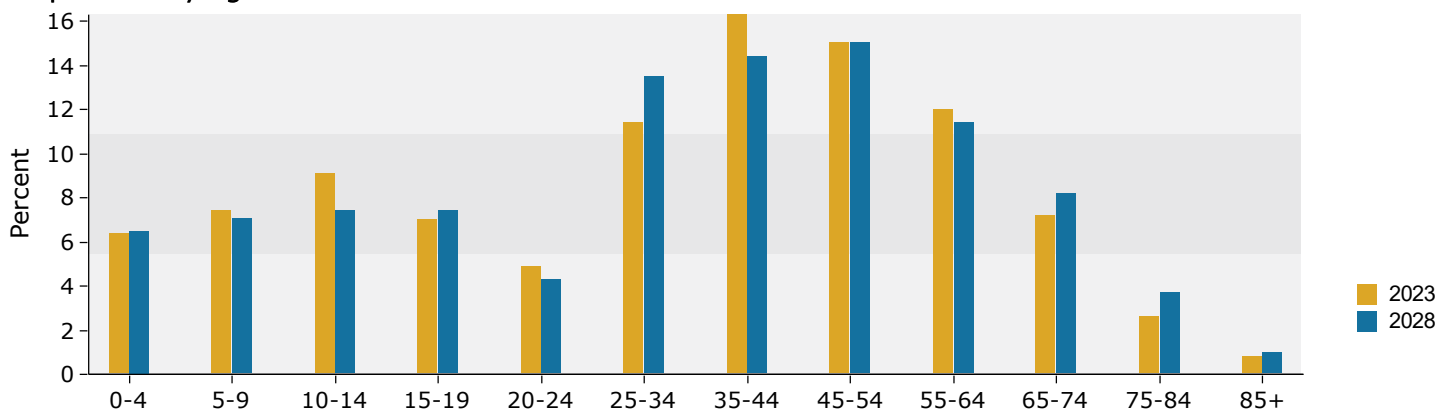
Source: Esri forecasts for 2023 and 2028. U.S. Census Bureau 2010 decennial Census data converted by Esri into 2020 geography.

## 1 mile

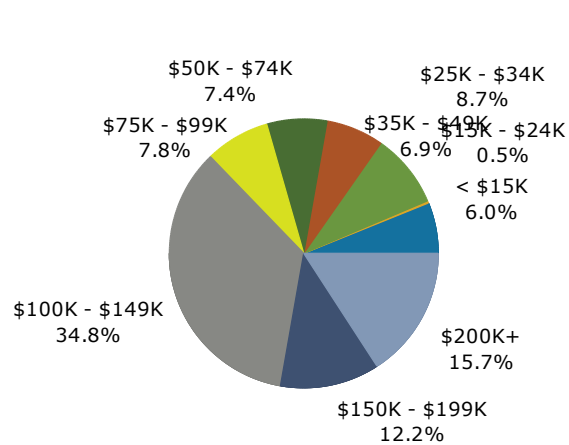
### Trends 2023-2028



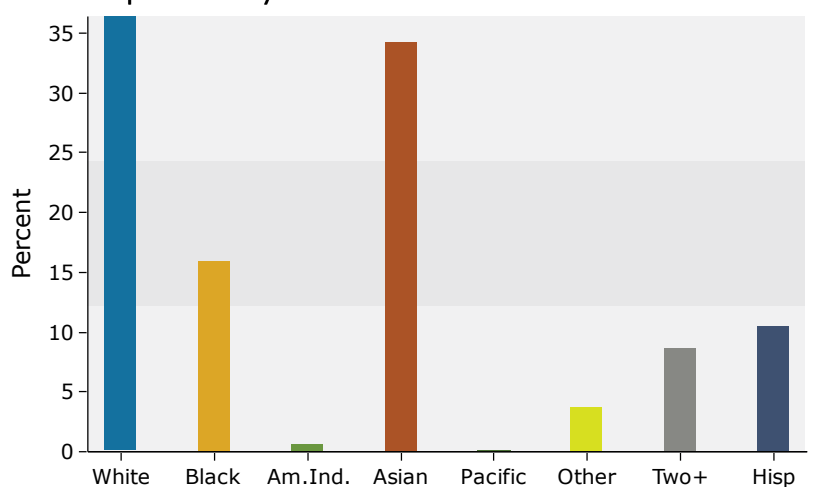
### Population by Age



### 2023 Household Income



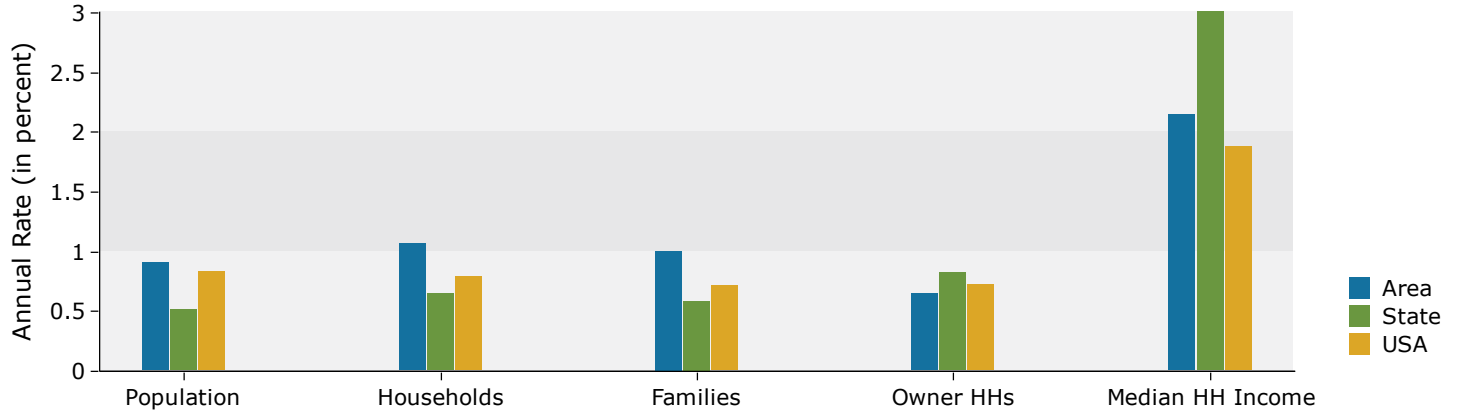
### 2023 Population by Race



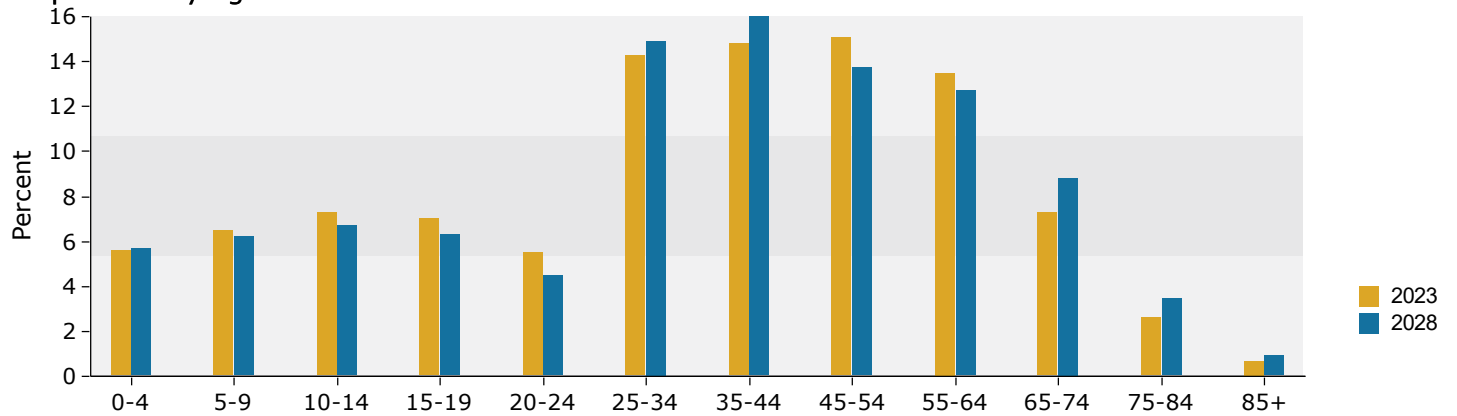
Source: Esri forecasts for 2023 and 2028. U.S. Census Bureau 2010 decennial Census data converted by Esri into 2020 geography.

## 3 miles

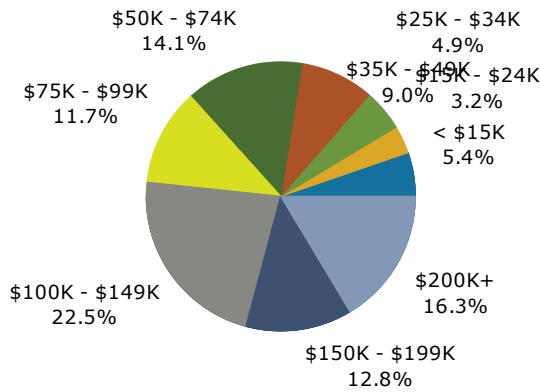
### Trends 2023-2028



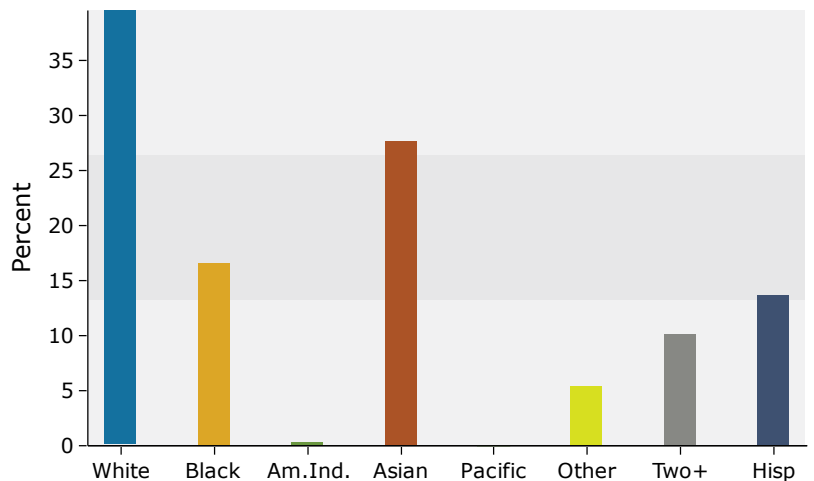
### Population by Age



### 2023 Household Income



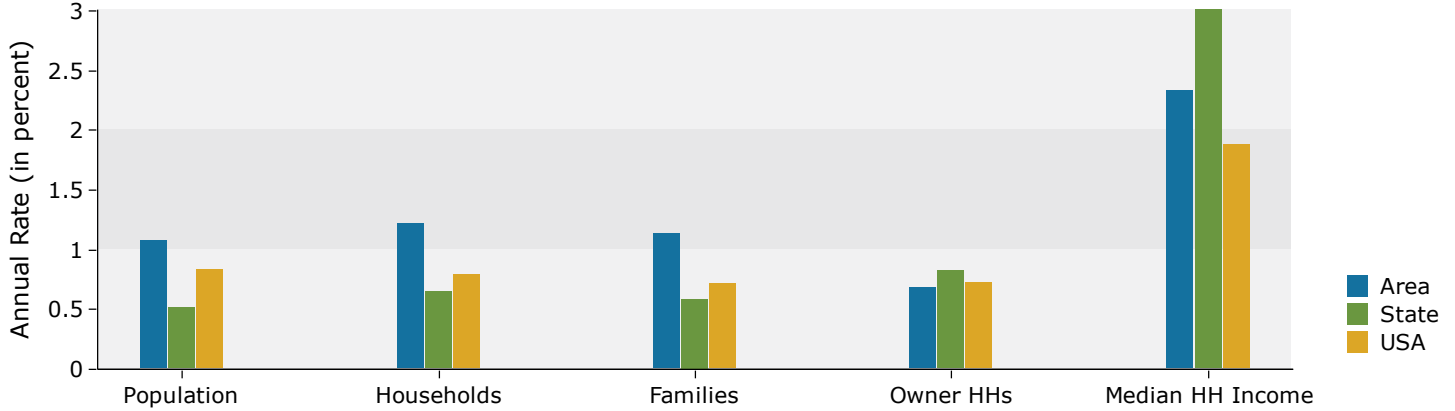
### 2023 Population by Race



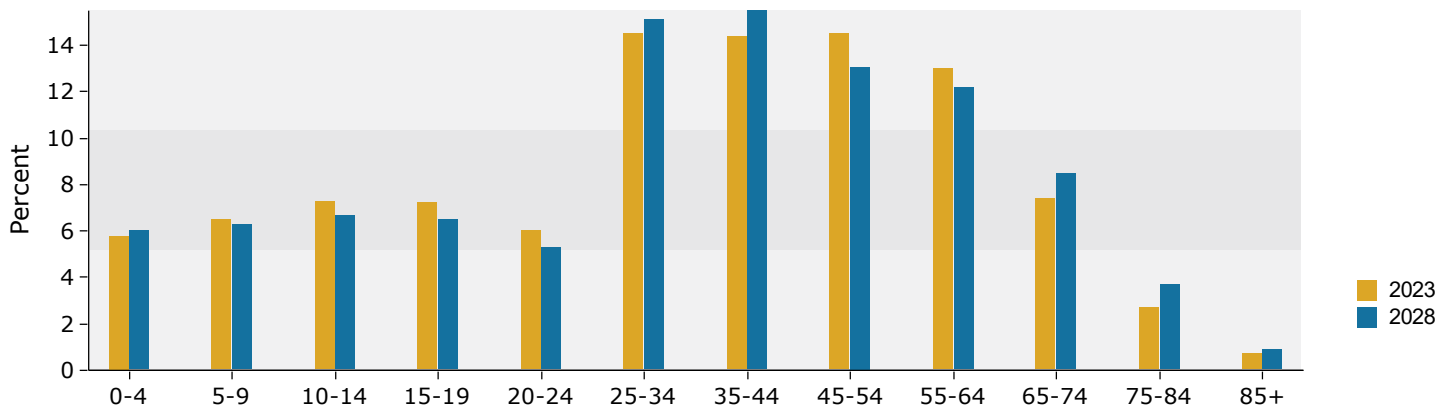
Source: Esri forecasts for 2023 and 2028. U.S. Census Bureau 2010 decennial Census data converted by Esri into 2020 geography.

## 5 miles

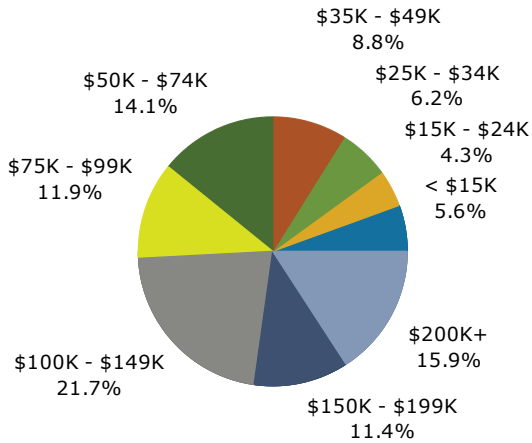
### Trends 2023-2028



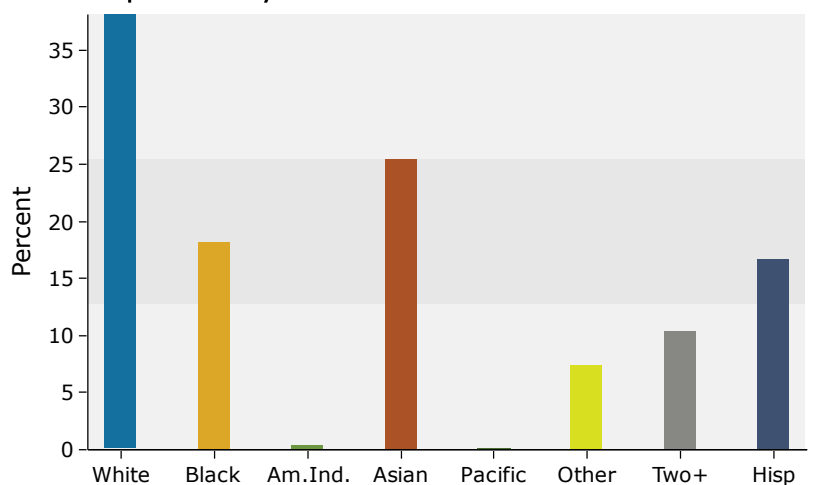
### Population by Age



### 2023 Household Income



### 2023 Population by Race



Source: Esri forecasts for 2023 and 2028. U.S. Census Bureau 2010 decennial Census data converted by Esri into 2020 geography.