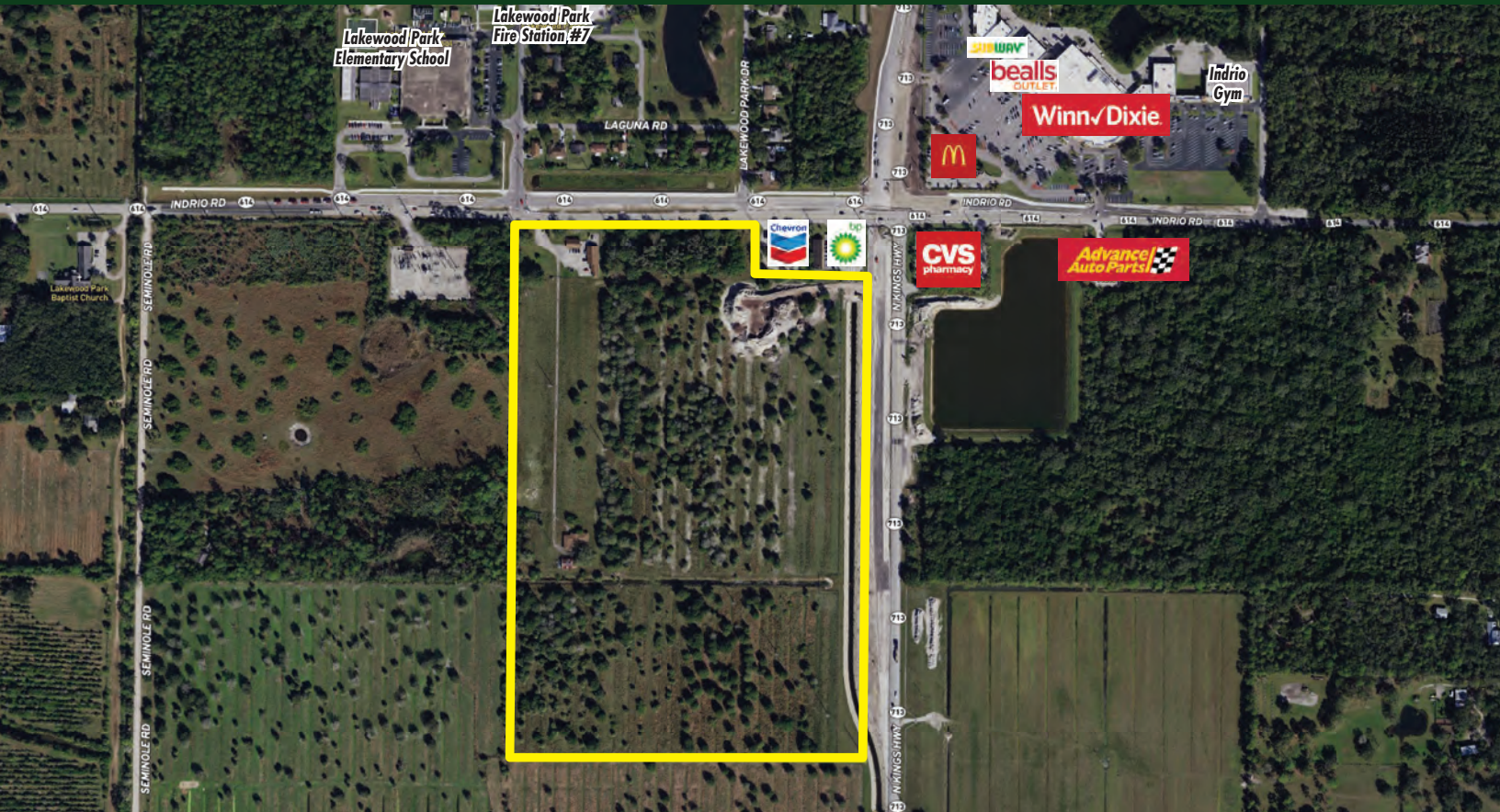


**FOR  
SALE**

# FT. PIERCE ACREAGE NEAR COMMERCIAL

Indrio Rd & Kings Hwy, St. Lucie County, FL 34951



## ABOUT THE PROPERTY

- SIZE** 52± acres
- PRICE** \$5,000,000
- AREA** Indrio Road commercial corridor
- ZONING** AG-1
- FUTURE LAND USE** TVC: Towns, Villages & Countryside
- UTILITIES** Water and sewer available
- ROAD FRONTAGE** 870'± on Indrio Rd  
1,773'± Kings Hwy

## DESCRIPTION

Strategically located commercial node for the entire P&D region of north St. Lucie County. Located south of Vero Beach and Indian River County line at the first major intersection. Just west of shopping center.

**Do not miss this investment opportunity!  
Call today for more information.**

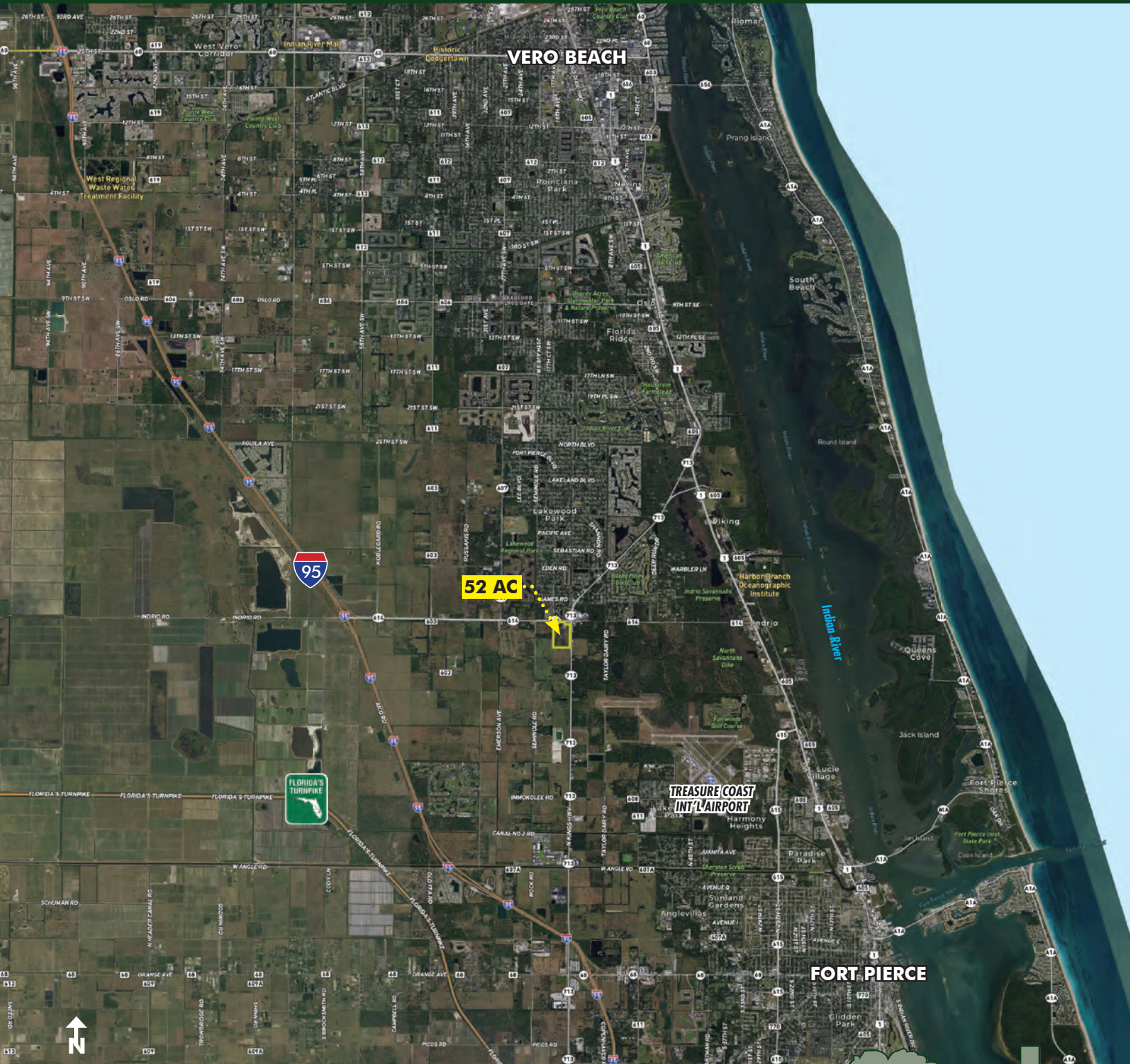
**MAURY L. CARTER & ASSOCIATES, INC.**

Licensed Real Estate Brokers | [www.maurycarter.com](http://www.maurycarter.com) | 407-422-3144



**FOR  
SALE**

# FT. PIERCE ACREAGE NEAR COMMERCIAL Indrio Rd & Kings Hwy, St. Lucie County, FL 34951



**REGIONAL MAP**

**MAURY L. CARTER & ASSOCIATES, INC.**

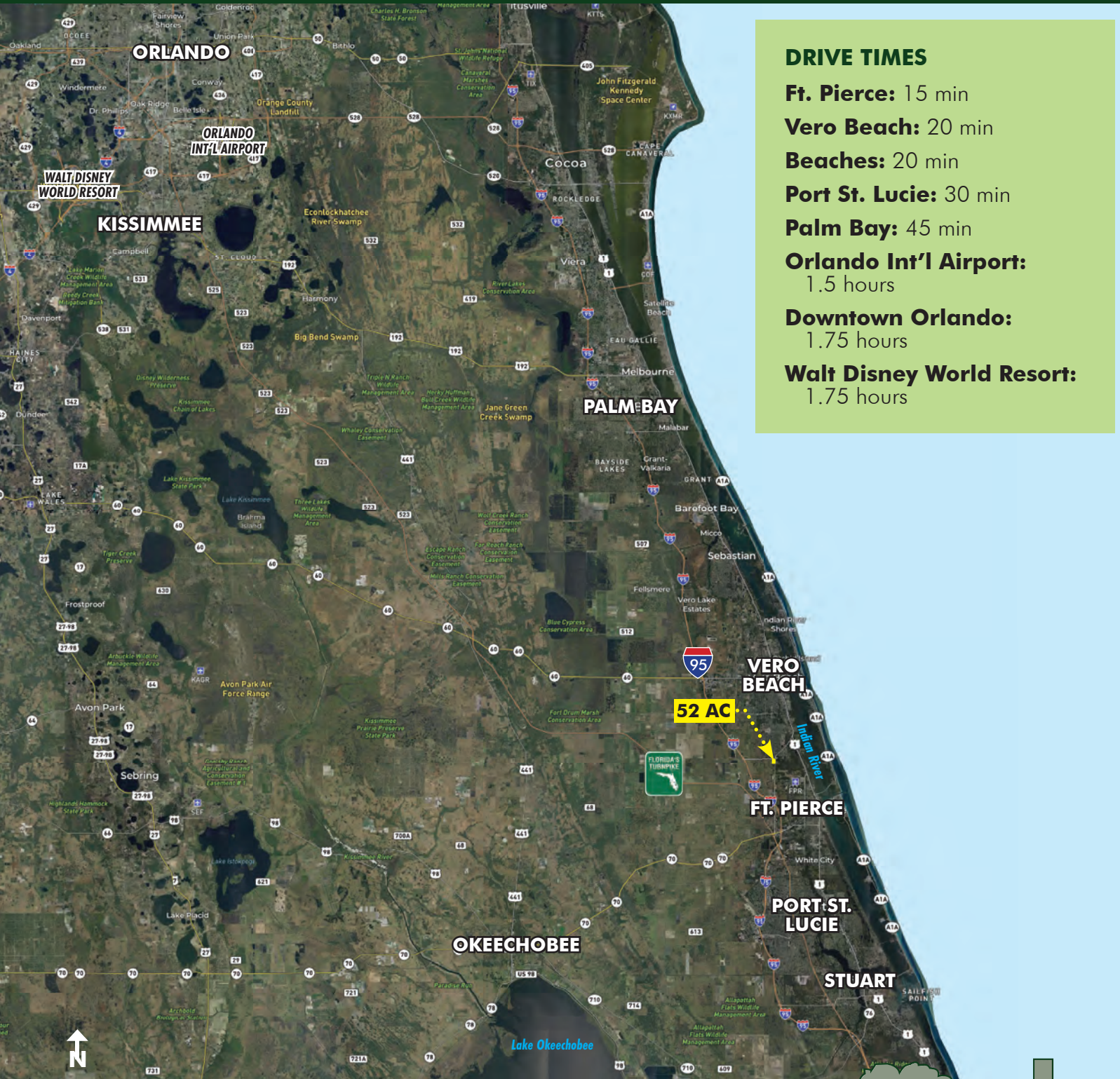
Licensed Real Estate Brokers | [www.maurycarter.com](http://www.maurycarter.com) | 407-422-3144



**FOR  
SALE**

# FT. PIERCE ACREAGE NEAR COMMERCIAL

Indrio Rd & Kings Hwy, St. Lucie County, FL 34951



## DRIVE TIMES

**Ft. Pierce:** 15 min

**Vero Beach:** 20 min

**Beaches:** 20 min

**Port St. Lucie:** 30 min

**Palm Bay:** 45 min

**Orlando Int'l Airport:**  
1.5 hours

**Downtown Orlando:**  
1.75 hours

**Walt Disney World Resort:**  
1.75 hours

## LOCATION MAP

**MAURY L. CARTER & ASSOCIATES, INC.**

Licensed Real Estate Brokers | [www.maurycarter.com](http://www.maurycarter.com) | 407-422-3144

