

# 9.34± ACRES DEVELOPMENT LAND

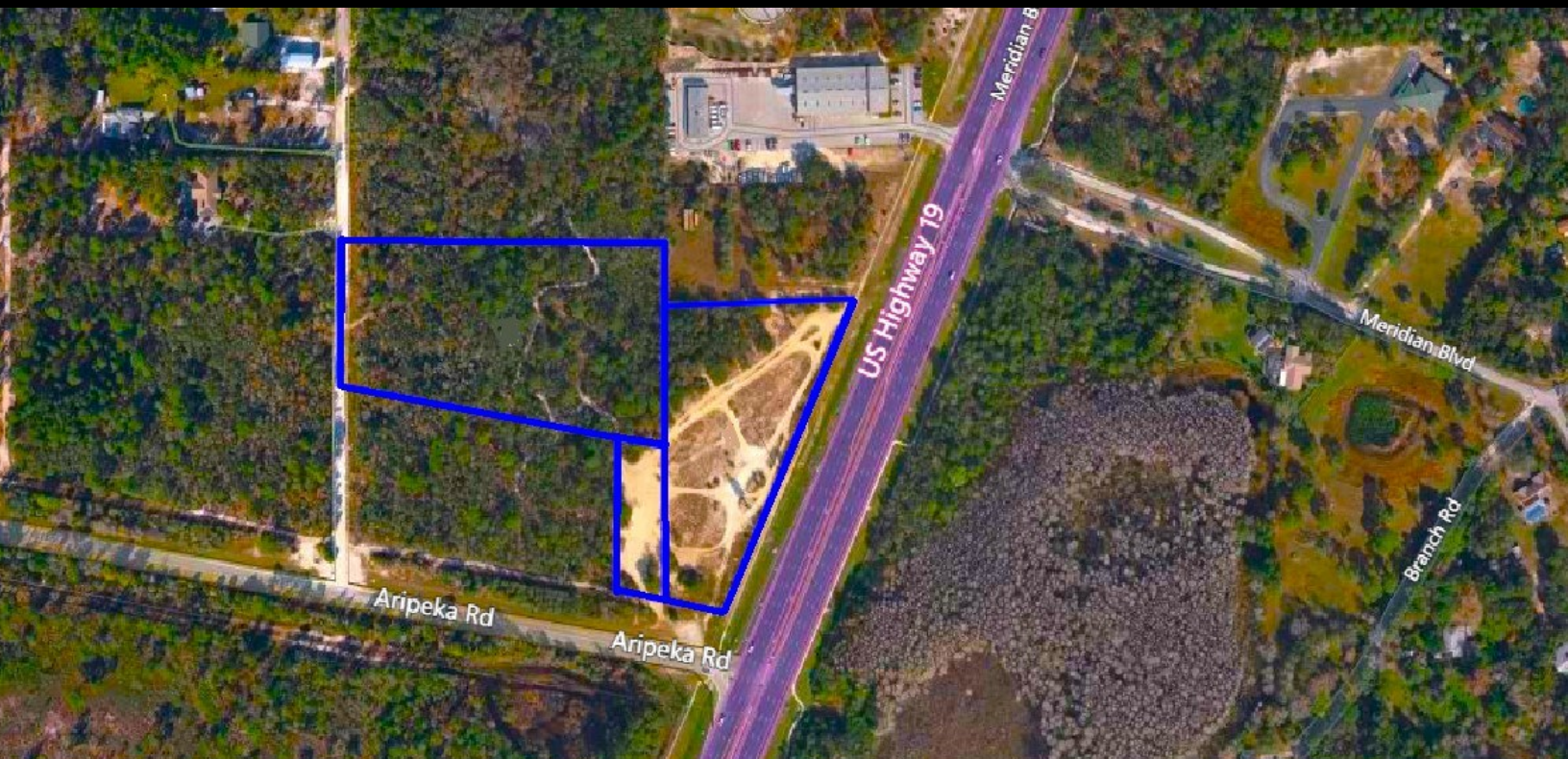
661' Commercial Frontage on US-19

*US Hwy 19 & Aripeka Rd, Hudson, FL 34667*

**BERKSHIRE  
HATHAWAY**  
HOMESERVICES

FLORIDA  
PROPERTIES  
GROUP

COMMERCIAL DIVISION



For More Information Contact:

## FOR SALE

- 9.34± Acres Future Community Development
- Front Parcel C2 with 661 Feet of Frontage
- Back Parcel Residential – 6 Dwellings/Acre
- Excellent Visibility from US 19
- Traffic Count: 46,000 AADT
- 1 Mile South of County Line Road
- Portions of Owen Dr. come with Ownership/Parcel



**ALANA CRUMBLEY**  
Commercial Advisor  
727-858-6681  
alanacrumbley@bhhsflpg.com



**ALEX HAMILTON**  
Commercial Real Estate Advisor  
727-514-2414  
ahamilton@bhhsflpg.com

Awarded #2 Producing Berkshire Hathaway Commercial Real Estate Company 2019

**Teamwork | Integrity | Passion | Excellence**

7916 Evolutions Way, Suite 210, Trinity, FL 34655 | 4950 West Kennedy Boulevard, Suite 300, Tampa, FL 33609

Ph. 813.739.5700 | bhhsflpgcommercial.com