

Highly Improved. Fantastic Amenities. Excellent Location.



**PRIME
FIRST FLOOR
SPACE WITH
SIGNAGE**

MIZNER PLACE

Premier Destination for
Wellington Professionals

OFFICE | MEDICAL | RETAIL



Jason L. Sundook, SIOR
561 471 8000 | www.mhcreal.com

For Lease
±3,648 SF
Class-A Office/Retail Space
in the heart of Wellington



MIZNER PLACE

12300 South Shore Boulevard, Wellington, Florida 33414

Property Features

- LAST SPACE REMAINING in highly improved and well-maintained building
- Building signage, improvement allowance and covered parking available
- Located in the Equestrian Capital of the World, with a mecca of equestrian programs, activities and events
- In the heart of Wellington, adjacent to Palm Beach Polo, and minutes from the Florida Turnpike, US-441, the Mall at Wellington Green, and more

For more information:

Jason L. Sundook, SIOR
Principal | jsundook@mhcreal.com

Key Features:



Office, medical and retail space



Approved for medical use



Multiple signage opportunities



New On-site Restaurant



Equestrian community

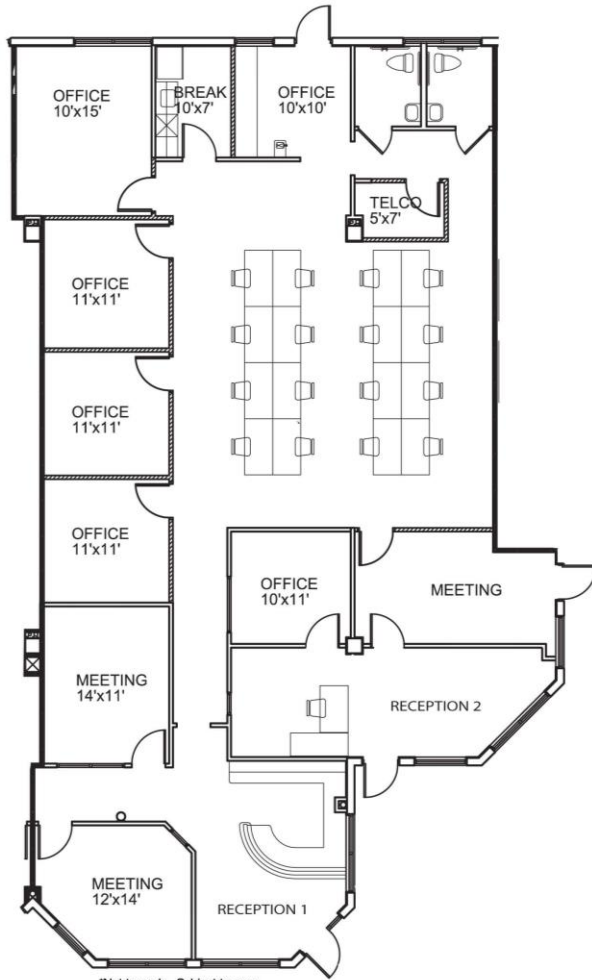
FOR LEASE: MIZNER PLACE, WELLINGTON, FL

Last Space Remaining | Ground Floor with Signage



VIEW 3D TOUR

tinyurl.com/MiznerPI-Suite101



Suite 101 3,648 SF

- Spacious ground floor office
- Building signage available
- Multiple entries and exits
- Two reception areas
- Five offices
- Four large offices/conference rooms
- Open work area
- Kitchen/break area
- Two private restrooms

For More Information:

Jason L. Sundook, SIOR | jsundook@mhcreal.com



561 471 8000



www.mhcreal.com