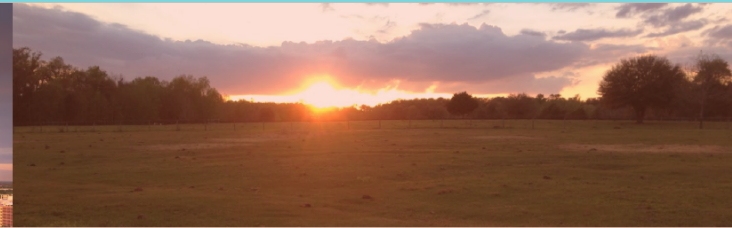
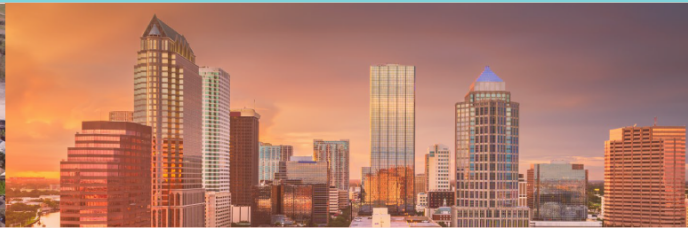


We know this land.



Kings Mill Rear Lots

Eshenbaugh
LAND COMPANY



The Dirt Dog

304 S. WILLOW AVENUE

TAMPA, FL 33606

813.287.8787

www.thedirtdog.com

Aerial



Property Description

PROPERTY DESCRIPTION

Join Arby's, O'Reillys, Dollar General and Discovery Point at Kings Mill Commercial in Valrico, FL. This masterplanned retail development has only a handful of outparcels remaining along SR 60 for commercial uses including medical office. The parcels are pad ready with utilities in place and master retention offsite. Seller will consider subdividing the parcels as well as ground leases, if more desirable.

LOCATION DESCRIPTION

Kings Mill is located in the north east quadrant of SR 60 and Mulrennan Road in Valrico, FL, a suburb of Tampa. The parcels are located on the north side of the road with access from both SR 60 and Mulrennan Road. SR 60 has approximately 35,500 AADT.

PROPERTY SIZE

0.72± - 0.93± Acres

ZONING

PD-Zoning allows for CN uses with 30 foot height restriction. Daycare, automotive part sales, and noxious uses are restricted.

PRICE

Lot B (0.76± AC) - \$450,000

Lot C (0.93± AC) - \$450,000

Lot H (0.72± AC) - \$275,000

BROKER CONTACT INFO

Chris Bowers, CCIM

Senior Broker

813.287.8787 x8

chris@thedirt dog.com

Tyler Woody

Sales Associate

813.287.8787 x11

Tyler@TheDirtDog.com

Land Lots



OF LOTS 3

TOTAL LOT SIZE 0.72 - 1.5 ACRES

TOTAL LOT PRICE N/A

STATUS

LOT #

SIZE

- Available
- Available
- Available

- B
- C
- H

- 0.76 Acres
- 0.93 Acres
- 0.72 Acres

Aerial



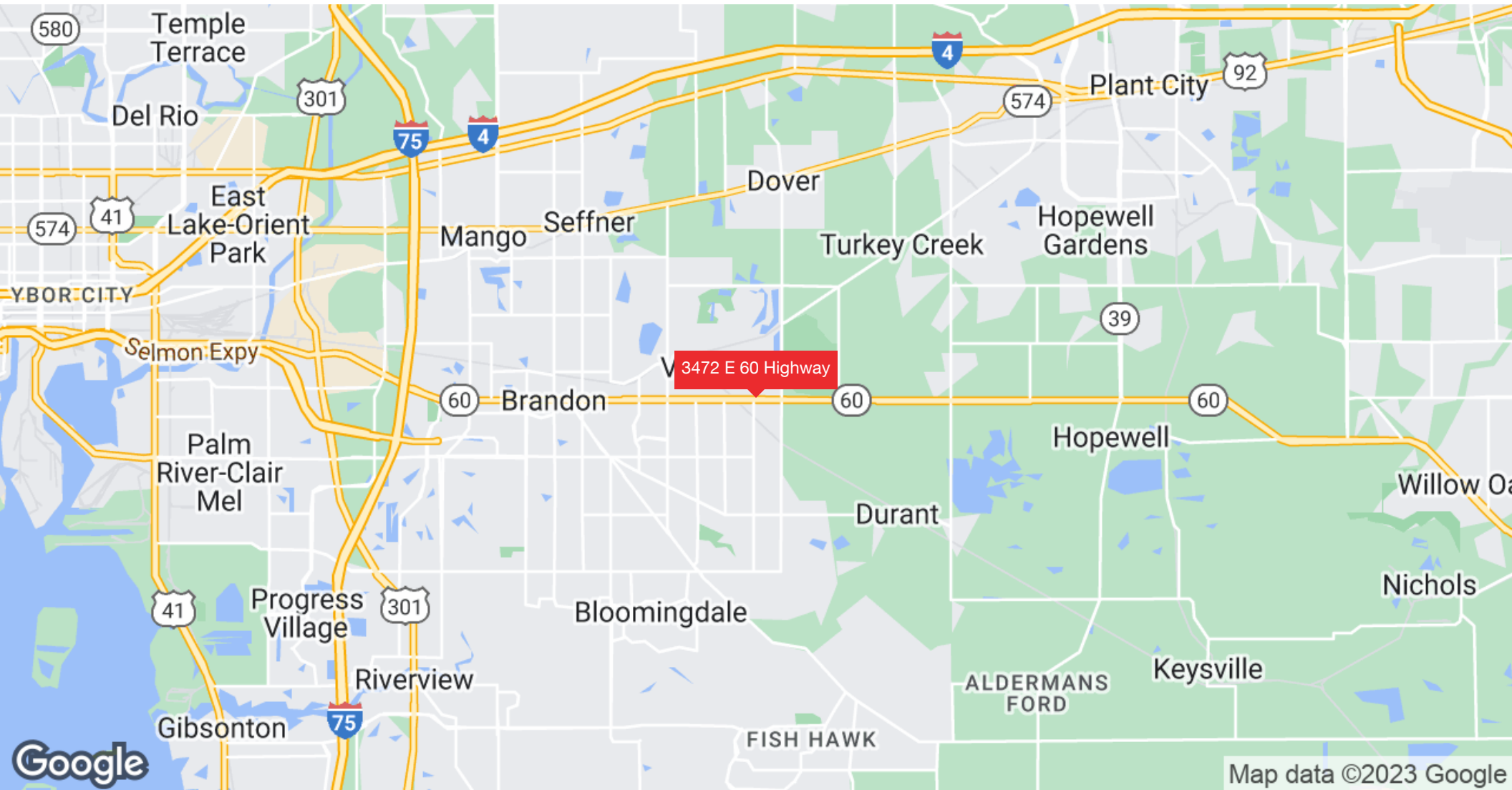
Additional Photos



Additional Photos



Regional Map



Demographics Map & Report

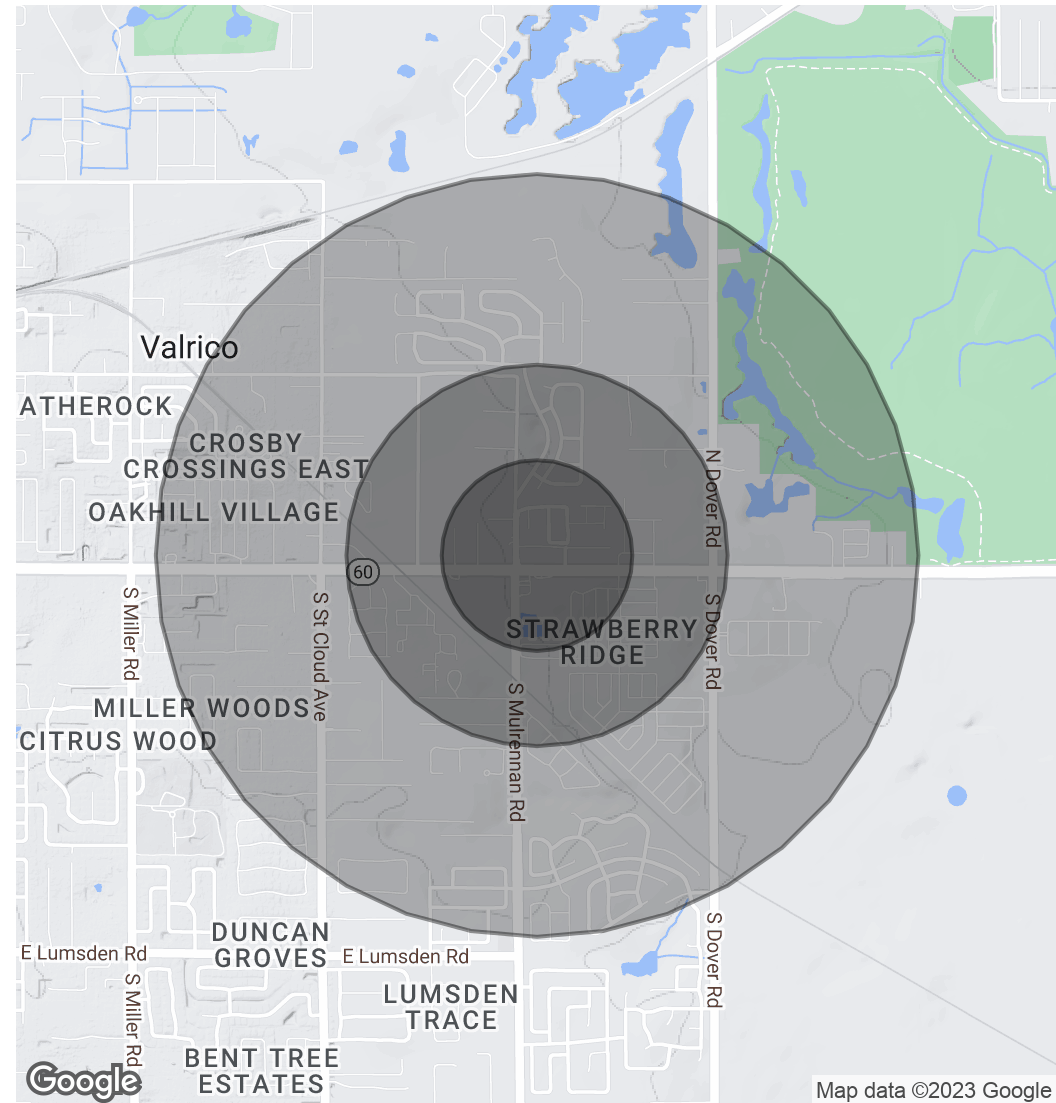
POPULATION

	0.25 MILES	0.5 MILES	1 MILE
Total Population	1,071	4,210	11,257
Average age	43.7	44.6	44.7
Average age (Male)	45.7	45.8	42.7
Average age (Female)	41.6	42.8	43.9

HOUSEHOLDS & INCOME

	0.25 MILES	0.5 MILES	1 MILE
Total households	431	1,712	4,448
# of persons per HH	2.5	2.5	2.5
Average HH income	\$64,773	\$64,031	\$68,110
Average house value	\$150,715	\$146,248	\$160,534

* Demographic data derived from 2020 ACS - US Census



Confidentiality & Disclaimer

All materials and information received or derived from Eshenbaugh Land Company, LLC its directors, officers, agents, advisors, affiliates and/or any third party sources are provided without representation or warranty as to completeness, veracity, or accuracy, condition of the property, compliance or lack of compliance with applicable governmental requirements, developability or suitability, financial performance of the property, projected financial performance of the property for any party's intended use or any and all other matters.

Neither Eshenbaugh Land Company, LLC its directors, officers, agents, advisors, or affiliates makes any representation or warranty, express or implied, as to accuracy or completeness of the any materials or information provided, derived, or received. Materials and information from any source, whether written or verbal, that may be furnished for review are not a substitute for a party's active conduct of its own due diligence to determine these and other matters of significance to such party. Eshenbaugh Land Company, LLC will not investigate or verify any such matters or conduct due diligence for a party unless otherwise agreed in writing.

EACH PARTY SHALL CONDUCT ITS OWN INDEPENDENT INVESTIGATION AND DUE DILIGENCE.

Any party contemplating or under contract or in escrow for a transaction is urged to verify all information and to conduct their own inspections and investigations including through appropriate third party independent professionals selected by such party. All financial data should be verified by the party including by obtaining and reading applicable documents and reports and consulting appropriate independent professionals. Eshenbaugh Land Company, LLC makes no warranties and/or representations

regarding the veracity, completeness, or relevance of any financial data or assumptions. Eshenbaugh Land Company, LLC does not serve as a financial advisor to any party regarding any proposed transaction. All data and assumptions regarding financial performance, including that used for financial modeling purposes, may differ from actual data or performance. Any estimates of market rents and/or projected rents that may be provided to a party do not necessarily mean that rents can be established at or increased to that level. Parties must evaluate any applicable contractual and governmental limitations as well as market conditions, vacancy factors and other issues in order to determine rents from or for the property.

Legal questions should be discussed by the party with an attorney. Tax questions should be discussed by the party with a certified public accountant or tax attorney. Title questions should be discussed by the party with a title officer or attorney. Questions regarding the condition of the property and whether the property complies with applicable governmental requirements should be discussed by the party with appropriate engineers, architects, contractors, other consultants and governmental agencies. All properties and services are marketed by Eshenbaugh Land Company, LLC in compliance with all applicable fair housing and equal opportunity laws.

Eshenbaugh Land Company is a licensed real estate brokerage firm in Florida and William A. Eshenbaugh is the broker of record.