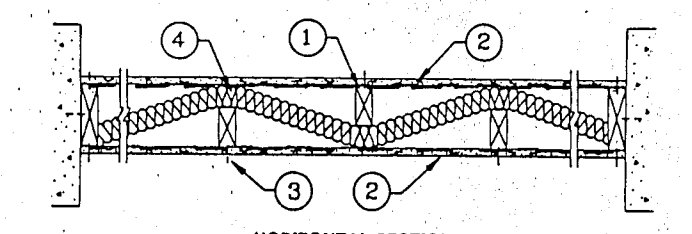


*Handwritten notes:*  
 11-10-97  
 5/3/98  
 MS 151014

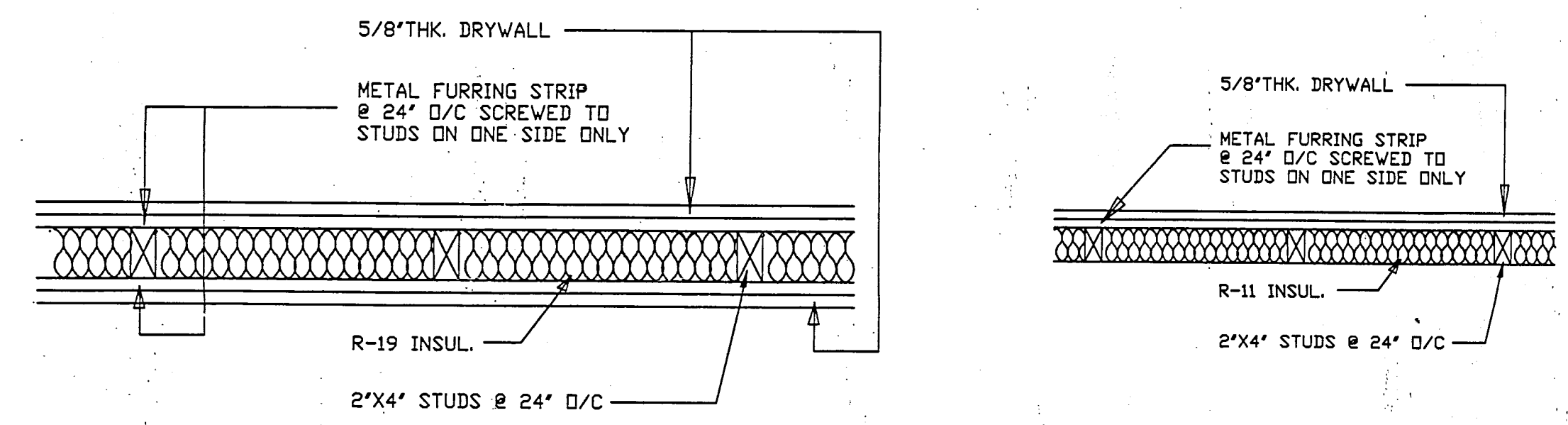
REVISIONS		BY
A	11-10-97	IK
B	5/3/98	MS

528 FIRE RESISTANCE DIRECTORY  
 FIRE RESISTANCE RATINGS (BXUV)—Continued  
 Design No. U340  
 Bearing Wall Rating—1 Hr.  
 Finish Rating—See Item 2



- HORIZONTAL SECTION
- Wood Studs—Nom 2 by 4 in. alternating on opposite sides of nom 2 by 6 in. wood plates. Spaced 24 in. O.C. max on each side of wood plate.
  - Wallboard, Gypsum—5/8 in. thick wallboard, paper or vinyl faced with beveled, square, tapered or rounded edges. Wallboard nailed to studs and bearing plates 7 in. O.C. with 6d common nails. Wallboard to each stud 7 in. O.C. with 6d common nails. 1 1/2 in. long, 0.0919 in. shank diam and 1/4 in. diam head. As an alternate, No. 8 bugle head cross nails, 1 1/2 in. long, may be substituted for the 6d common nails. When used in widths other than 48 in., wallboard to be installed horizontally.
  - Canadian Gypsum Co.—Type C, 1/2 in. thick (Finish rating 28 min.)  
 Colson Corp.—Type FPM (Finish rating 20 min.)  
 United States Gypsum Co.—Type X, 1/2 in. thick (Finish rating 28 min.)
  - Joint and Nailheads—Wallboard joints covered with paper tape and joint compound. Nail heads covered with joint compound. As an alternate, non 7/8 in. thick gypsum veneer plaster may be applied to entire surface of classified veneer baseboard. Joints reinforced.
  - Batts and Blankets—Min Show/Optimal Mineral wool insulation placed in stud cavities, facing and blanketing. See Batts and Blankets (BZ2) category for list of classified companies. See the UL Classification Marking.

UNIT #	A/C SPACE	S.F.
UNIT #1	SCREEN PATIO	264 S.F.
UNIT #2		1,222 S.F.
UNIT #3		1,785 S.F.
UNIT #4		1,250 S.F.
COURT YARD		1,820 S.F.
<b>TOTAL</b>		<b>12,466 S.F.</b>

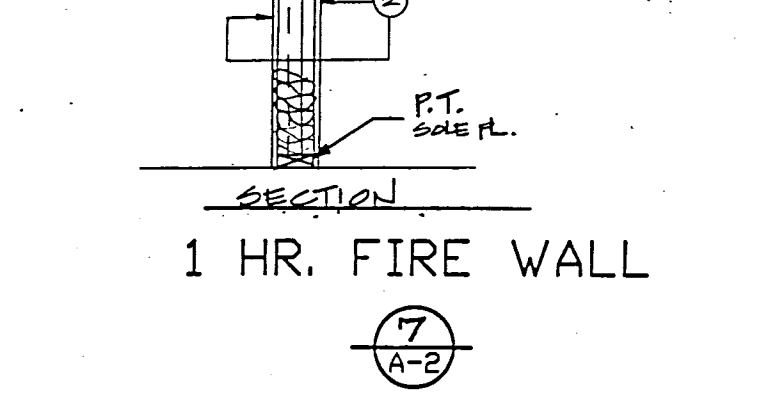
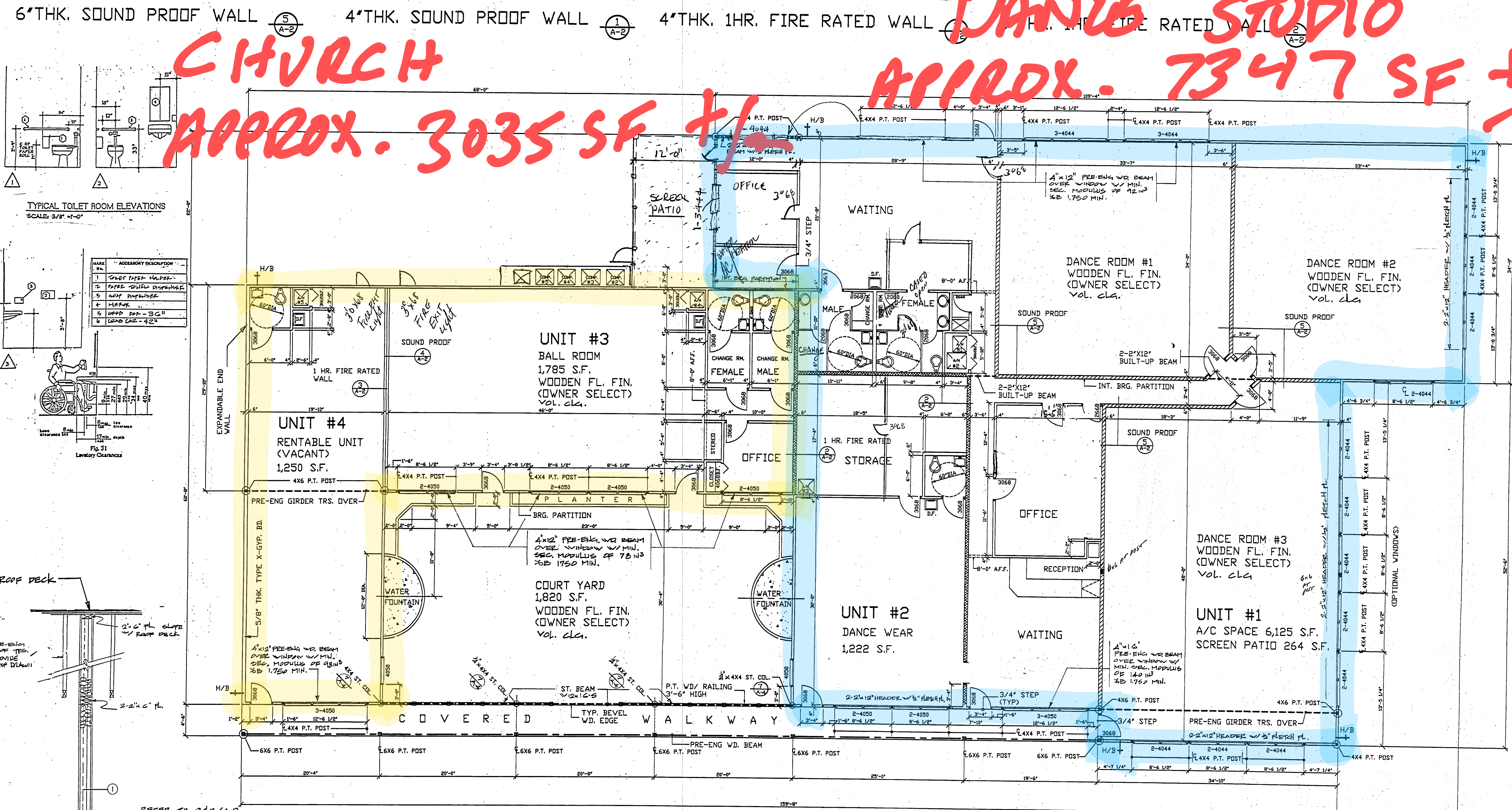


Design No. U314  
 Bearing Wall Rating—1 Hr.  
 Finish Rating—20 Min.  
 Top and Bottom of Wall Effectively Firestopped

- Wood Studs—Nom 2 by 4 in. spaced 24 in. O.C. effectively fire stopped.
- Wallboard, Gypsum—5/8 in. thick, 4 ft wide. Wallboard or sheetrock nailed to studs and bearing plates 7 in. O.C. with 6d common nails 1/4 in. long, 0.0919 in. shank diam and 1/4 in. diam head.
- Canadian Gypsum Co.—Type SCX, 5/8 in. thick, 4 ft wide.  
 United States Gypsum Co.—Type XPS, 5/8 in. thick, 4 ft wide.  
 Joints and Nailheads—Wallboard joints covered with paper tape and joint compound. Nail heads covered with joint compound. As an alternate, non 7/8 in. thick gypsum veneer plaster may be applied to the entire surface of classified veneer baseboard. Joints reinforced.
- Blank Corner Felt—Optional—Use at wall corners. Cut to fit and apply to entire surface of wallboard, not greater than 2 in. from corner of wallboard, must be fastened to adjacent stud through lab using one No. 6d common nail.
- Batts and Blankets—Min Show/Optimal Mineral wool insulation placed in stud cavities, facing and blanketing. See Batts and Blankets (BZ2) category for list of classified companies. See the UL Classification Marking.

DANCE STUDIO APPROX. 7347 SF ±

CHURCH APPROX. 3035 SF ±



- NOTES:
- 4"x4" P.T. WD. POST W/ SIMPSON CB44 POST BASE BOLTED & CC44 POST CAP & HEADER (TYPICAL BETW'N WINDOWS)
  - 6"x6" P.T. WD. POST W/ SIMPSON CB66 POST BASE BOLTED & CC46 POST CAP @ PRE-ENG WD. BEAM
  - 4"x4" P.T. WD. POST W/ SIMPSON CB44 POST BASE BOLTED & CC44 POST CAP @ PRE-ENG GIRDER TRS.
  - REFER TO SH. A-6 FOR DETAILS OF H/C BATH.
  - PROVIDE 3/4" THK. PLYWD. PLATFORM W/ 2"x6" FLOOR JOISTS @ 16" O/C OVER ALL BATH FOR W/H W/H TO BE ON METAL PAN W/ DRAIN TO EXT. T&P RELIEF VALVE SHALL BE FULL SIZE TO EXT. W/ THERMAL EXP. DEVICE.

REVISED  
**FLOOR PLAN**  
 SCALE 1/8" = 1'-0"  
 1 A-2

STEPHEN E. DAVIS ARCHITECTS, INC.  
 2901 E. IRLO BRINSON HWY. - SUITE A  
 KISSIMMEE, FLORIDA 34744  
 (407) 933-7660

RASKIN DANCE STUDIO  
 PARTIN SETTLEMENT RD.,  
 OSCEOLA COUNTY, FL

DATE	06-13-97
SCALE	1/8" = 1'-0"
BY	MS
CHECKED	C478
DATE	

A-2