

371 PRAIRIE ST. UNIT C
CRYSTAL LAKE, IL 60014

FOR SALE

MLS: 11834460

July 17, 2023



INDUSTRIAL CONDO 2,280 SF

\$210,000 \$92.11 psf

DESCRIPTION

Industrial Condo

Unit C: 2,280 SF condo located in this 19,000 SF multi-tenant industrial building.

480 SF office consisting of 1 private office and large reception/ clerical and 1 bath. 1,800 warehouse with 1 12'x14' DID, 20-22' ceilings, 480 SF mezzanine storage above the office and common dock.

Ideal for contractors / trades.

SPECIFICATIONS

Building Size	19,000 SF
Land Size	1.52 AC
Year Built	1999
Office/Showroom	480 SF
HVAC System	GFA / Central Air
Electrical	200 AMP 3-Phase
Sprinkled	Yes
Floor Drains	No
Washrooms	1
Ceiling Height	20-22'
Parking	30+ Common
DID's	(1) 12' x 14'
Truck Dock	1 - Common Exterior
Sewer/Water	City
Zoning	M
RE Taxes	\$5,455.72 (2022)
Association Fee	\$241.61/mo.
PIN Number	14-33-382-003

No warranty or representation is made as to the accuracy of the foregoing information. Terms of sale or lease and availability are subject to change or withdrawal without notice. This document is for information purposes only. No offer of sub-agency is being made.

PREMIER
COMMERCIAL REALTY

- Industrial
- Commercial
- Office
- Land
- Business

[CLICK HERE](#)
to view our website

HEATHER SCHWEITZER

Vice President/Managing Broker

Office: 847-854-2300 Ext 15

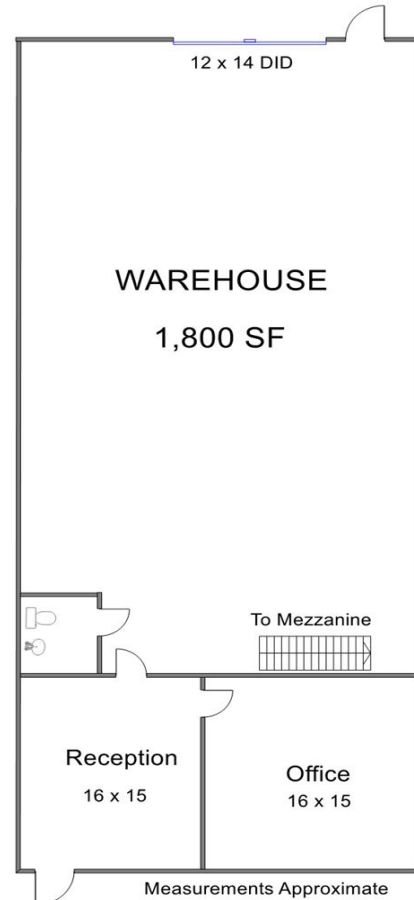
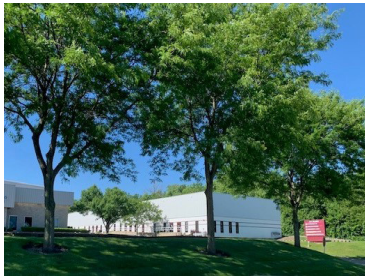
Cell: 815-236-9816

HeatherS@PremierCommercialRealty.com

9225 S. IL Route 31
Lake in the Hills, IL 60156
www.PremierCommercialRealty.com
Office: 847-854-2300 | Fax: 847-854-2380

371 PRAIRIE ST. UNIT C
CRYSTAL LAKE, IL 60014

FOR SALE



UNIT C 2,280 SF

PREMIER
COMMERCIAL REALTY

- Industrial
- Commercial
- Office
- Land
- Business

CLICK HERE
to view our website

9225 S. IL Route 31
Lake in the Hills, IL 60156
www.PremierCommercialRealty.com
Office: 847-854-2300 | Fax: 847-854-2380