

For Lease

Downtown Office Building

1,116 - 3,500 SF | \$27.50 - \$35.00 / SF



105 East Robinson Street

Orlando, Florida 32801

Property Highlights

- 50,000± SF, 5-story office building in Downtown Orlando
- Great location at the corner of East Robinson Street and Magnolia Avenue
- Free visitors parking lot
- Free covered parking for tenants
- 4 blocks from I-4 and minutes to SR 408 (East-West)
- 1/2 block from Orange County Courthouse and walking distance to Lake Eola
- Monument signage available
- First floor space available (3,500± SF) with both lobby and street entrances
- Zoning: AC-3A\T

AVAILABLE SPACES

Space	Lease Rate	Size (SF)
Suite 100	\$35.00 SF/yr	3,500
Suite 301	\$27.50 SF/yr	2,500
Suite 303	\$27.50 SF/yr	3,277
Suite 500	\$27.50 SF/yr	1,116
Suite 503	\$27.50 SF/yr	1,211
Suite 540	\$27.50 SF/yr	2,170



Lease Rate: \$27.50 - \$35.00 / SF NNN

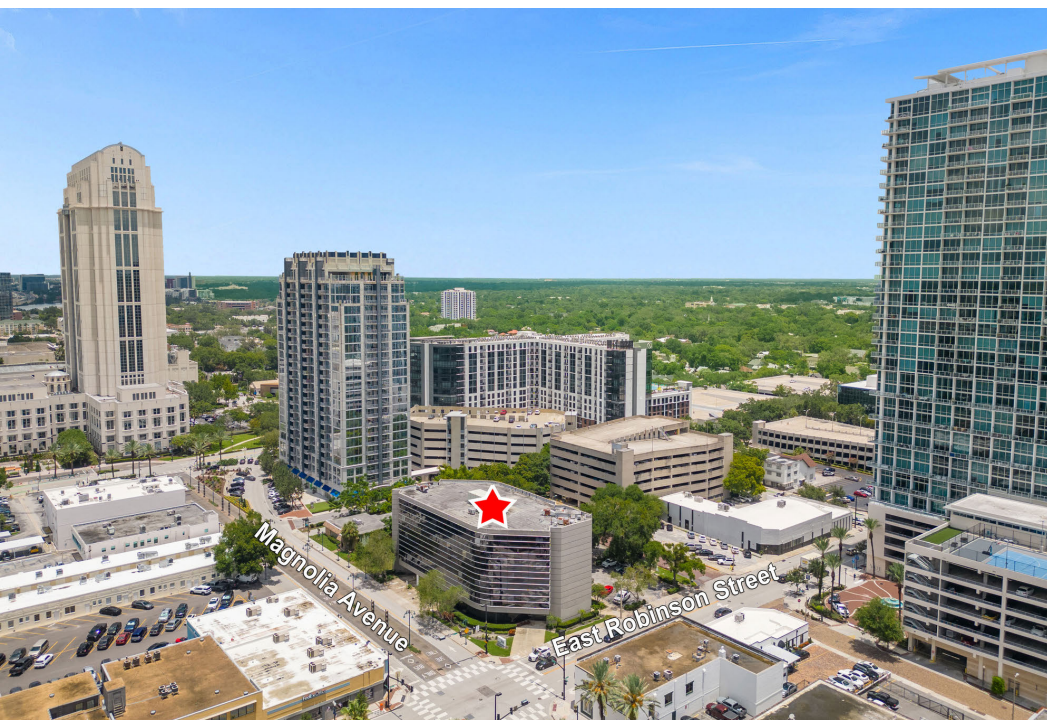
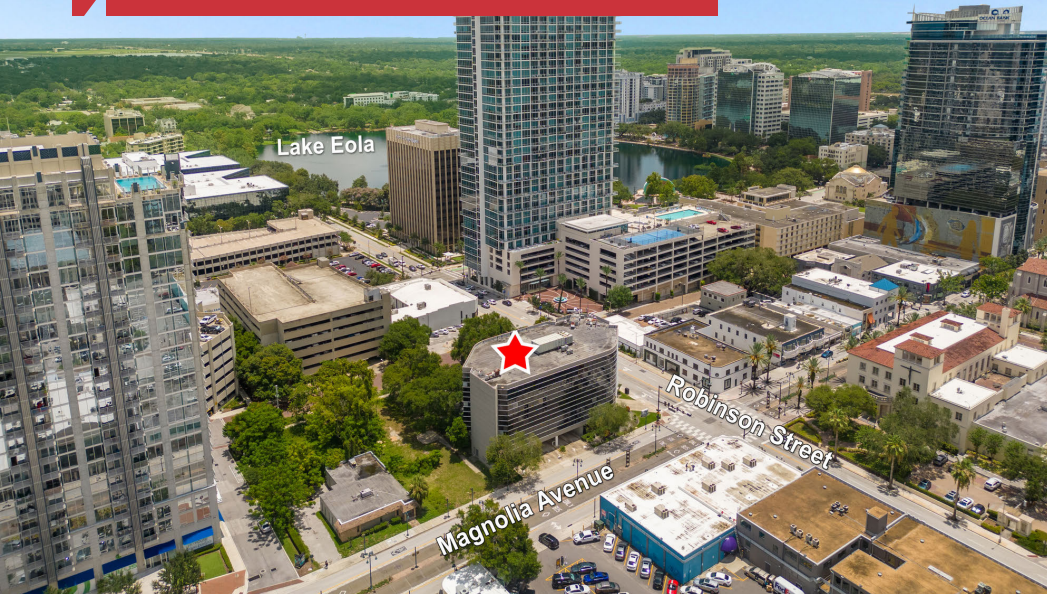
For more information

Jeffrey Bloom, CCIM

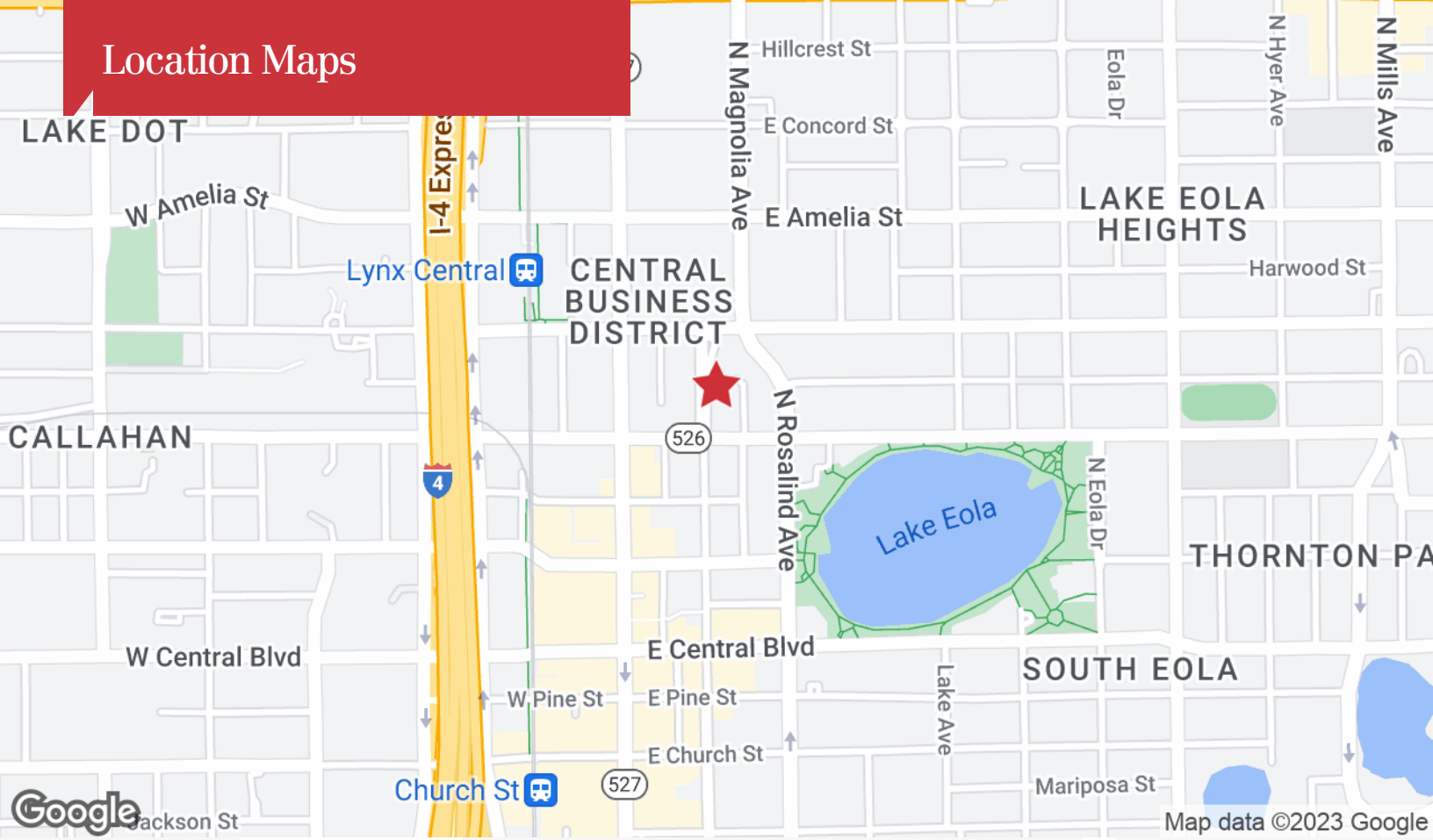
O: 407 949 0709

jbloom@realvest.com

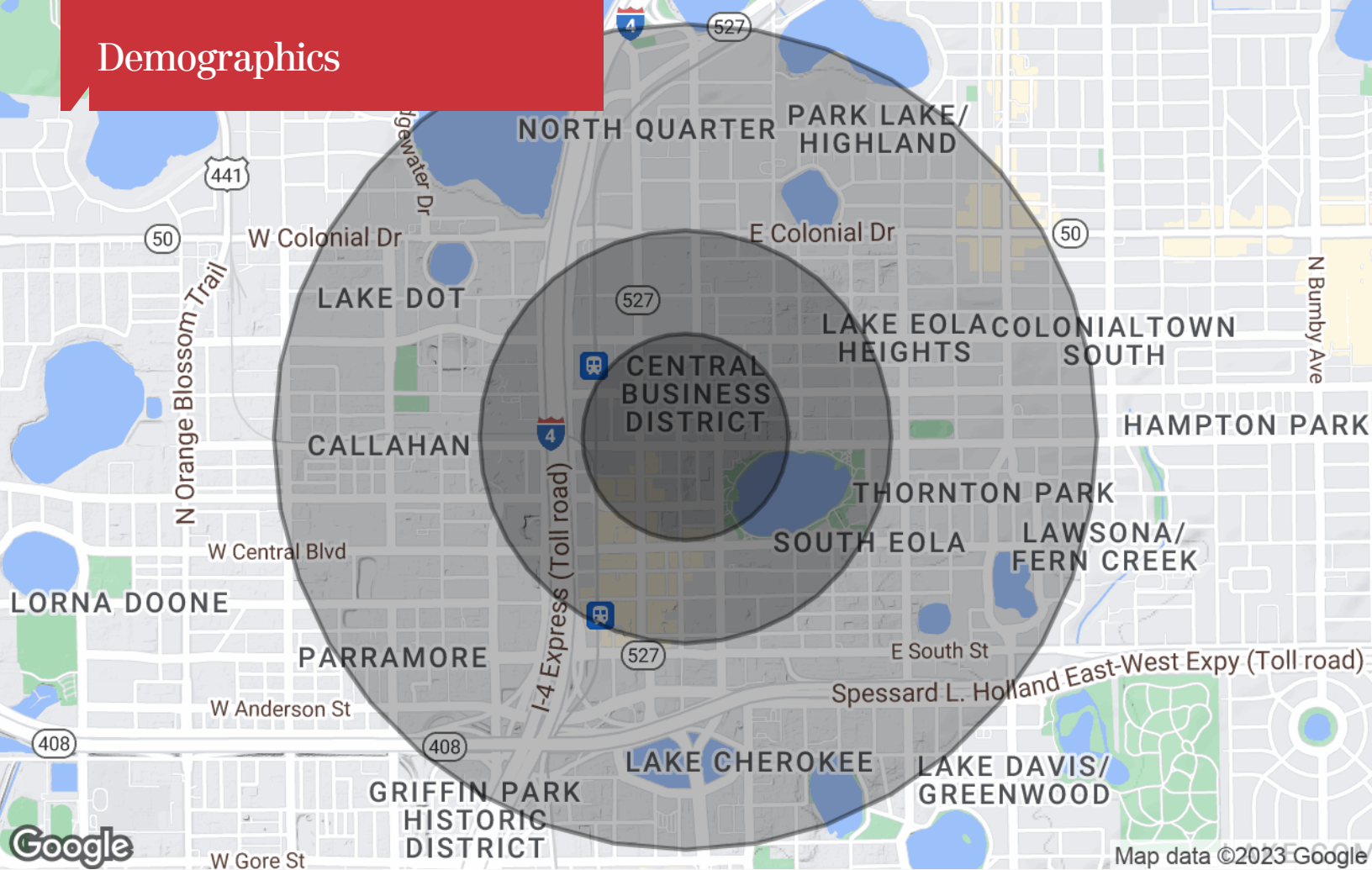
Property Photos



Location Maps



Demographics



Population

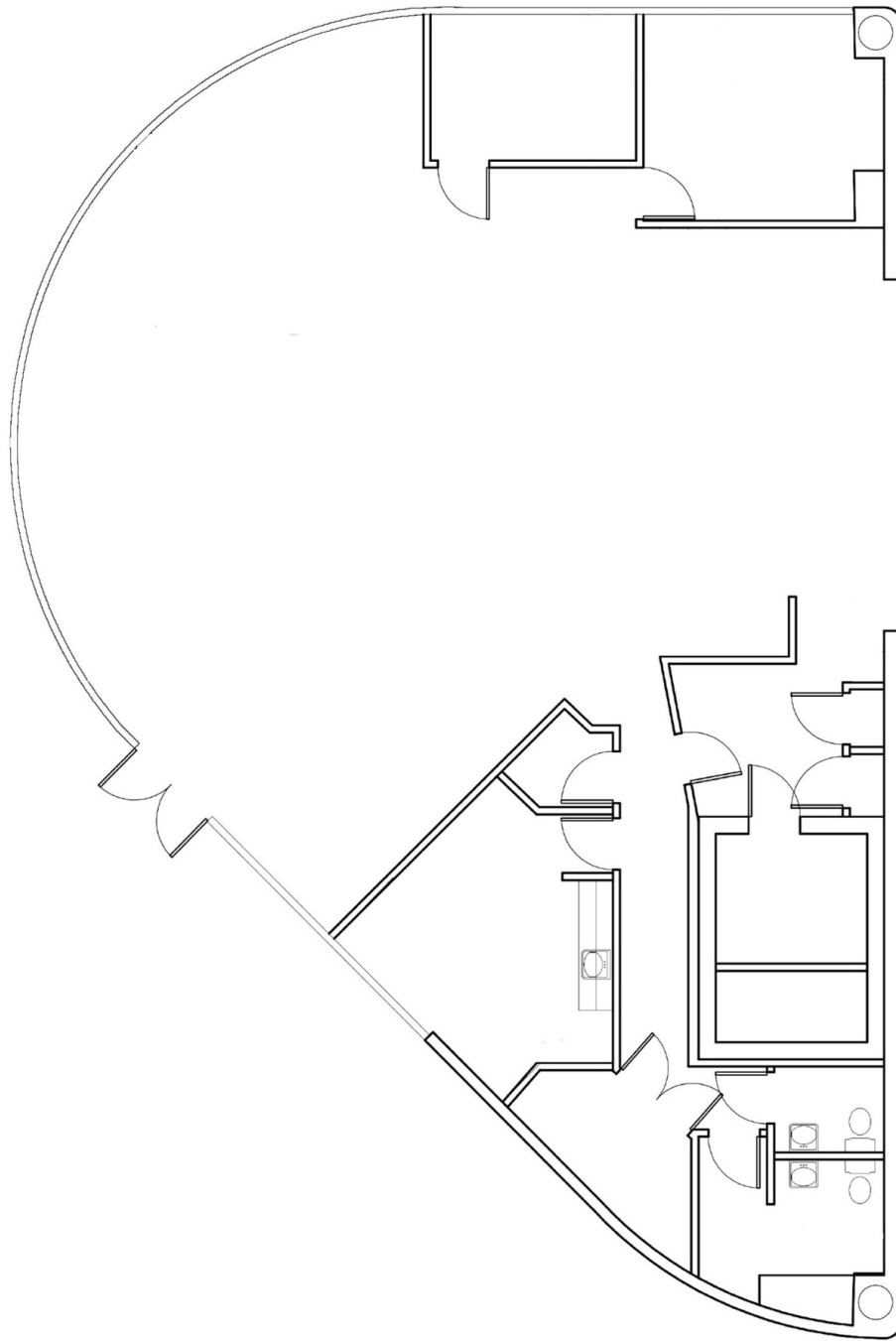
	0.25 Miles	0.5 Miles	1 Mile
TOTAL POPULATION	1,264	4,903	15,915
MEDIAN AGE	34.9	34.8	36.8
MEDIAN AGE (MALE)	33.7	34.9	35.7
MEDIAN AGE (FEMALE)	38.8	36.2	37.9

Households & Income

	0.25 Miles	0.5 Miles	1 Mile
TOTAL HOUSEHOLDS	1,099	4,125	12,062
# OF PERSONS PER HH	1.2	1.2	1.3
AVERAGE HH INCOME	\$97,811	\$86,655	\$79,867
AVERAGE HOUSE VALUE	\$263,059	\$241,437	\$246,866

* Demographic data derived from 2020 ACS - US Census

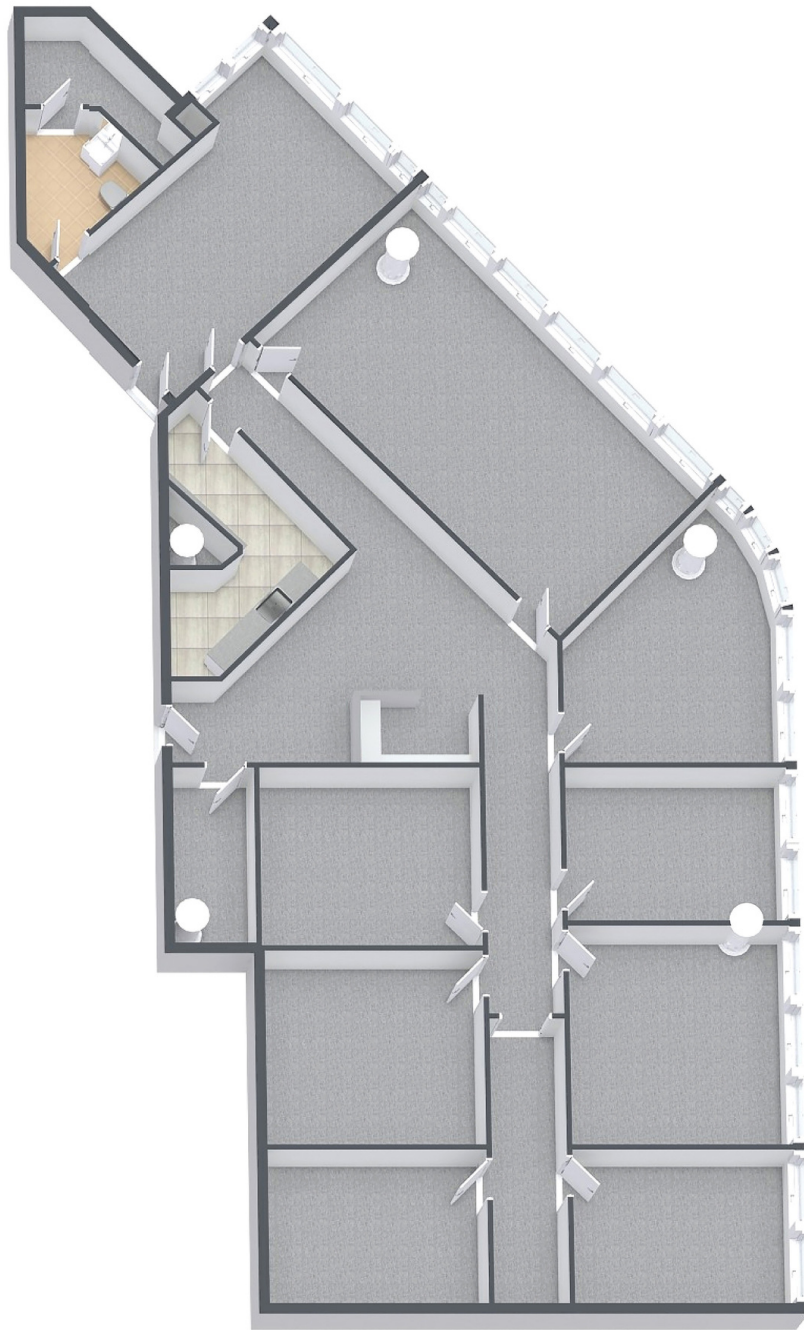
Suite 100 - 3,500± SF



Suite 301 - 2,500± SF



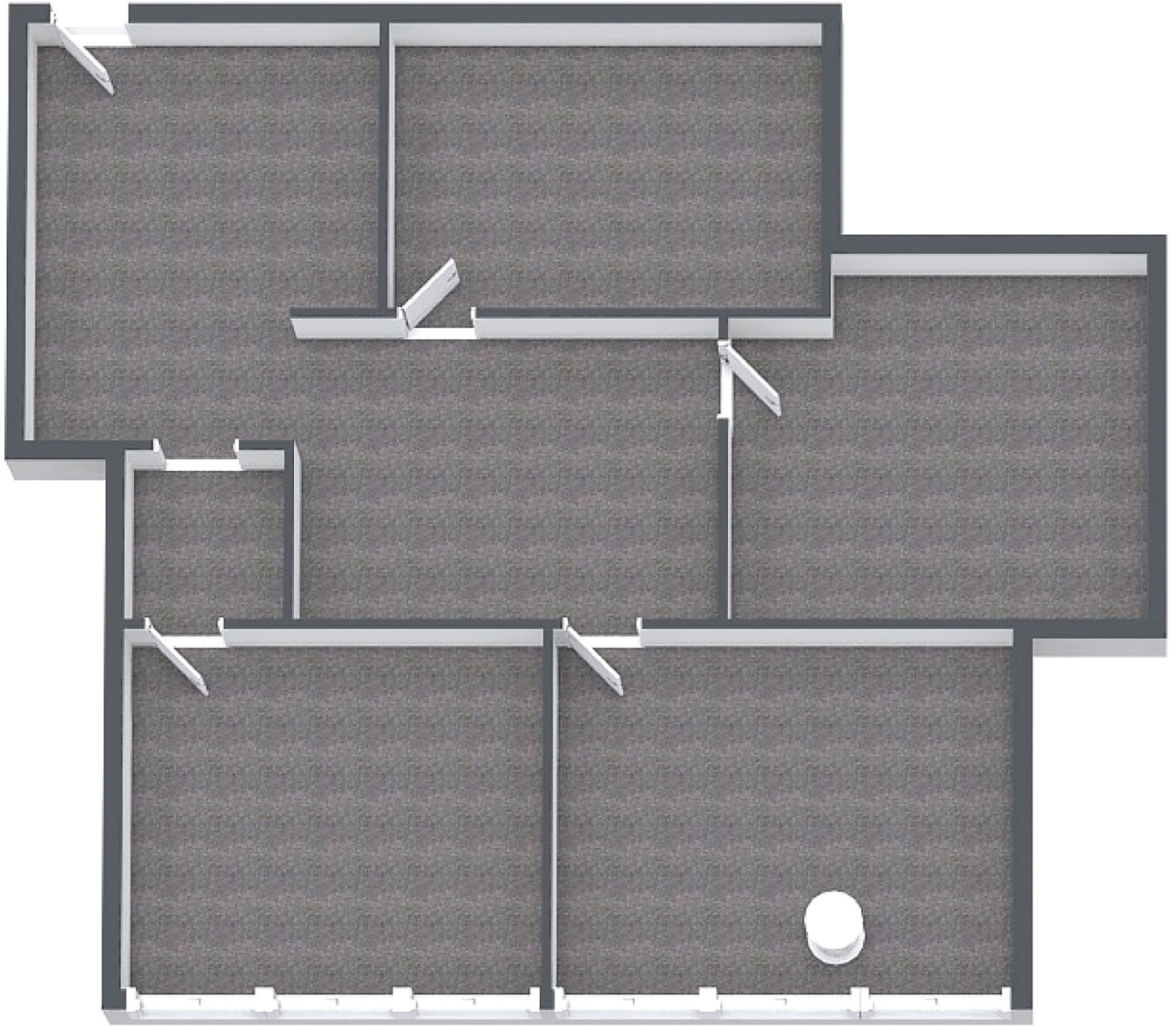
Suite 303 - 3,277± SF



Suite 500 - 1,116 SF



Suite 503 - 1,211± SF



Suite 540 - 2,170± SF

